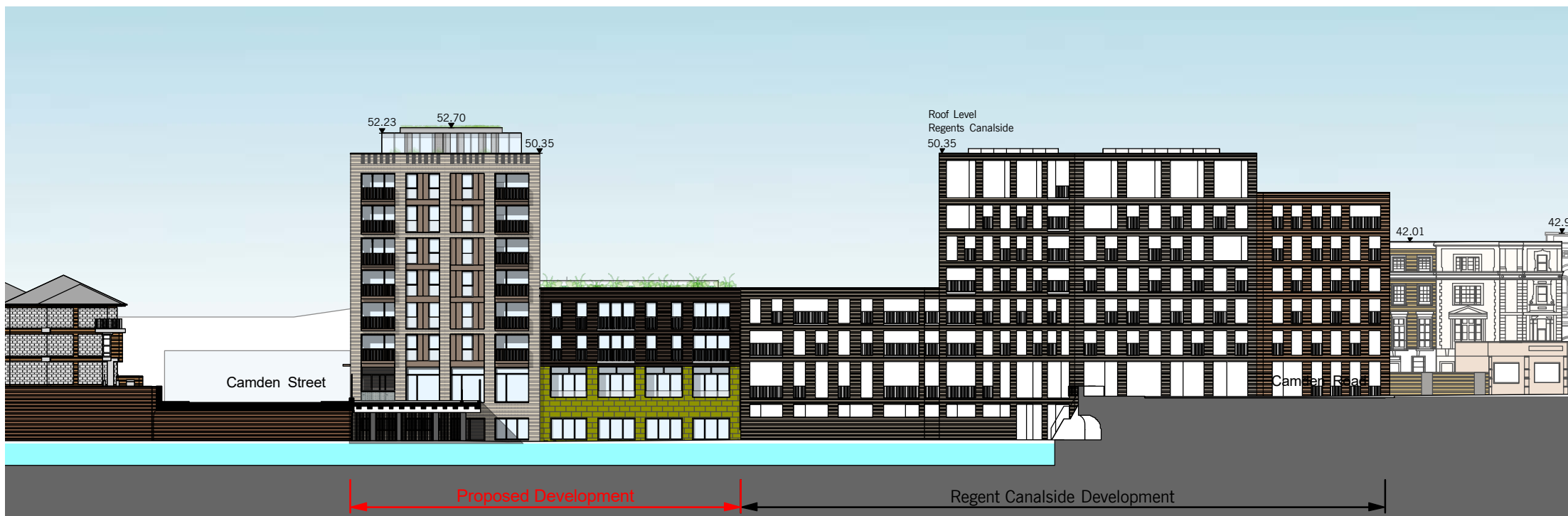
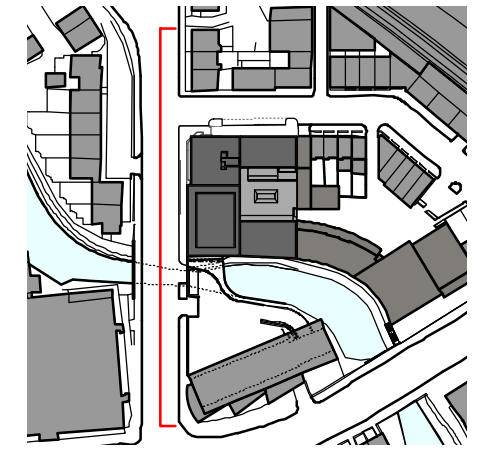
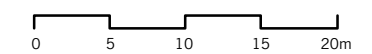
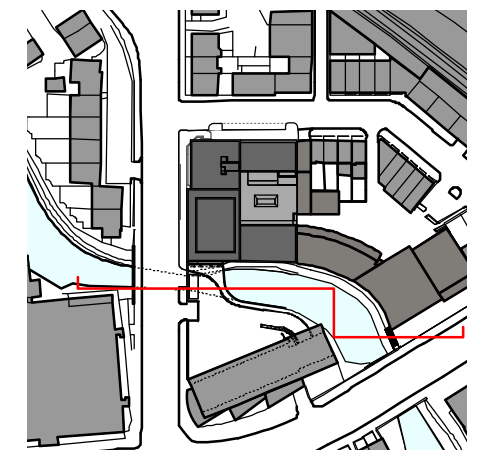




**Proposed West Elevation - Camden Street View**



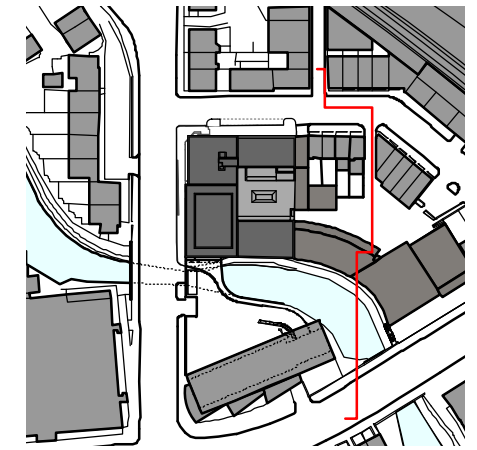
**Proposed South Elevation - Canal View**



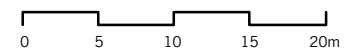
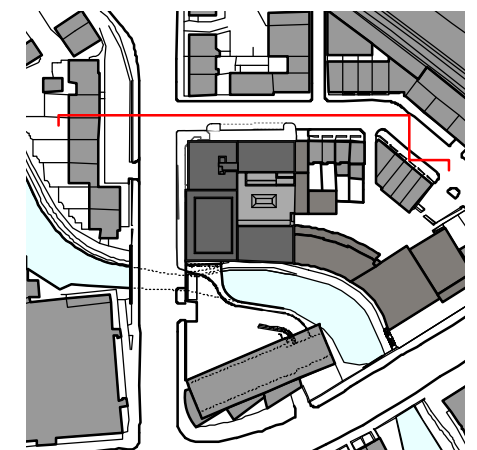
**Rev.E 27/11/2017:**  
 3.GENERAL:  
 -West elevation updated to match A213-Rev.F  
 -South elevation updated to match A214-Rev.E



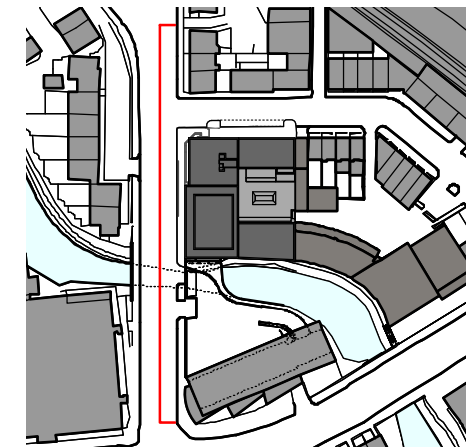
Proposed East Elevation - Cross sectional view



Proposed North Elevation - Bonny Street View



Rev.F 27/11/2017:  
 3.GENERAL:  
 -East elevation updated to match A215-Rev.F  
 -North elevation updated to match A216-Rev.F



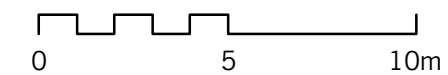
**Materials:**

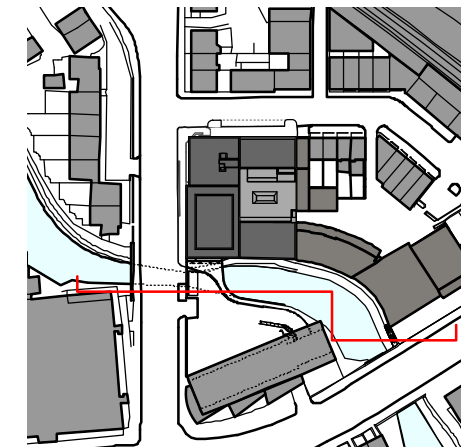
- 1) Brick façade
- 2) Glazed terracotta panels
- 3) Rendered façade with external wall insulation system
- 4) Powder coated composite windows
- 5) Laser Cut metal gates.
- 6) Bronze coloured metal glazed screen
- 7) Translucent glass balustrade
- 8) Metal railing balustrade
- 9) Glazed roof access
- 10) Glass door (residential entrance)
- 11) Glazed double door (office entrance)
- 12) Metal facade cladding
- 13) Sliding metal screens
- 14) Biodiverse Green Roof
- 15) Juliet balcony
- 16) Green Wall

**Rev.F 27/11/2017:**

- 1.RESIDENTIAL:  
R.9) Stair access added to communal roof terrace.
- 2.COMMERCIAL:  
C.3) Commercial access repositioned  
C.4) Recessed corner omitted

**Proposed West Elevation**  
(Camden Street View)





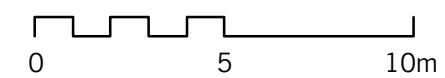
Materials:

- 1) Brick façade
- 2) Glazed terracotta panels
- 3) Rendered façade with external wall insulation system
- 4) Powder coated composite windows
- 5) Laser Cut metal gates.
- 6) Bronze coloured metal glazed screen
- 7) Translucent glass balustrade
- 8) Metal railing balustrade
- 9) Glazed roof access
- 10) Glass door (residential entrance)
- 11) Glazed double door (office entrance)
- 12) Metal facade cladding
- 13) Sliding metal screens
- 14) Biodiverse Green Roof
- 15) Juliet balcony
- 16) Green Wall

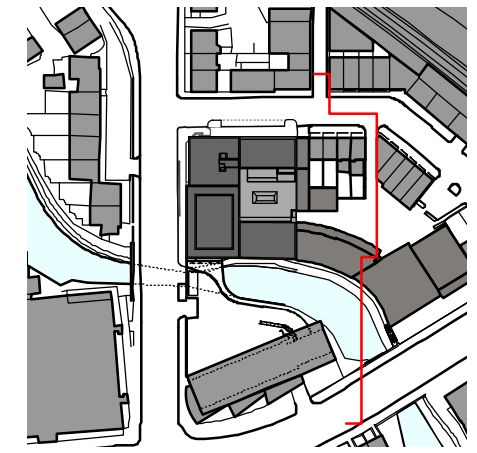
Rev.E 27/11/2017:

- 1.RESIDENTIAL:
- R.4) Window alterations on Block C Canal side, window arrangement and faience columns widened.
  - R.5) Wall overhang along Block C Canal side at 1st floor omitted.
- 3.GENERAL:
- G.1) Full height security fencing between existing columns comprising vertical steel bars at 100mm centres with weld mesh on inside face all powder coated

**Proposed South Elevation**  
(Canal View)



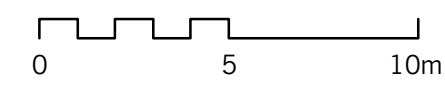


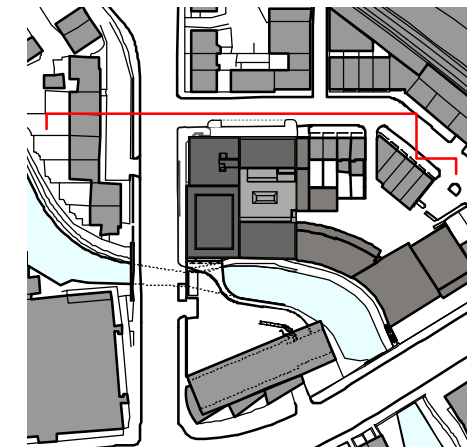


- Materials:
- 1) Brick façade
  - 2) Glazed terracotta panels
  - 3) Rendered façade with external wall insulation system
  - 4) Powder coated composite windows
  - 5) Laser Cut metal gates.
  - 6) Bronze coloured metal glazed screen
  - 7) Translucent glass balustrade
  - 8) Metal railing balustrade
  - 9) Glazed roof access
  - 10) Glass door (residential entrance)
  - 11) Glazed double door (office entrance)
  - 12) Metal facade cladding
  - 13) Sliding metal screens
  - 14) Biodiverse Green Roof
  - 15) Juliet balcony
  - 16) Green Wall

**Rev.F 27/11/2017:**  
 1.RESIDENTIAL:  
 R.10) Privacy screen added (Obscured glass h:1.8m). Brick parapet risen.

**Proposed East Elevation**  
 (Regent Canalside View)





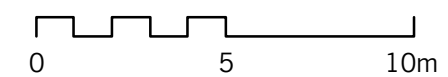
Materials:

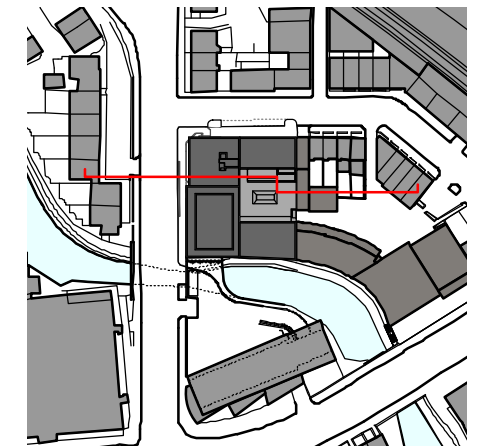
- 1) Brick façade
- 2) Glazed terracotta panels
- 3) Rendered façade with external wall insulation system
- 4) Powder coated composite windows
- 5) Laser Cut metal gates.
- 6) Bronze coloured metal glazed screen
- 7) Translucent glass balustrade
- 8) Metal railing balustrade
- 9) Glazed roof access
- 10) Glass door (residential entrance)
- 11) Glazed double door (office entrance)
- 12) Metal facade cladding
- 13) Sliding metal screens
- 14) Biodiverse Green Roof
- 15) Juliet balcony
- 16) Green Wall

Rev.F 27/11/2017:

- 1.RESIDENTIAL:  
 R.6) Block A lightwell and railings amended.  
 Balcony at Ground level omitted.  
 R.8) Residential access to Block B repositioned  
 R.9) Stair access added to communal roof terrace

**Proposed North Elevation**  
(Bonny Street View)





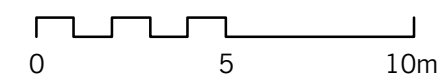
Materials:

- 1) Brick façade
- 2) Glazed terracotta panels
- 3) Rendered façade with external wall insulation system
- 4) Powder coated composite windows
- 5) Laser Cut metal gates.
- 6) Bronze coloured metal glazed screen
- 7) Translucent glass balustrade
- 8) Metal railing balustrade
- 9) Glazed roof access
- 10) Glass door (residential entrance)
- 11) Glazed double door (office entrance)
- 12) Metal facade cladding
- 13) Sliding metal screens
- 14) Biodiverse Green Roof
- 15) Juliet balcony
- 16) Green Wall

Rev.E 27/11/2017:

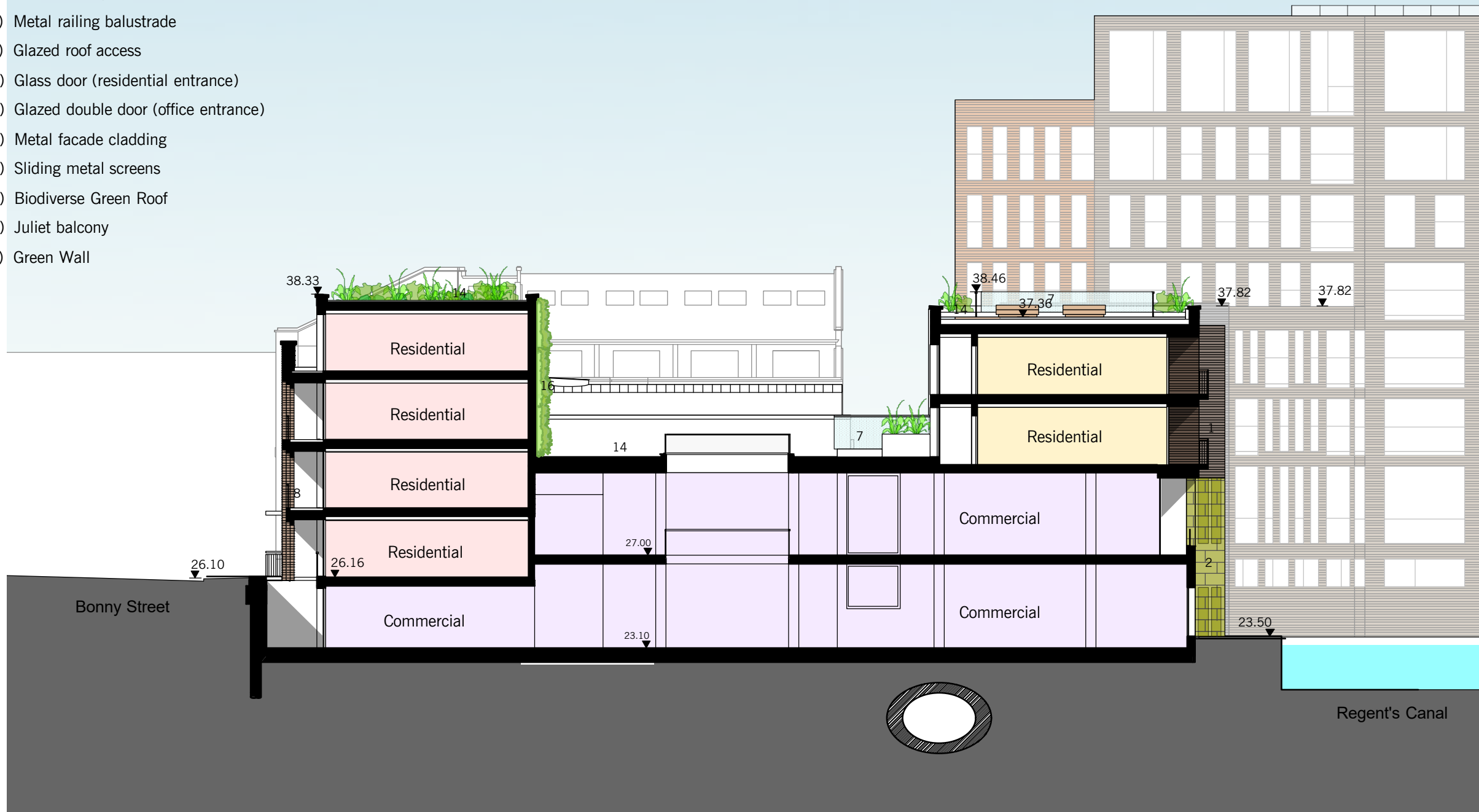
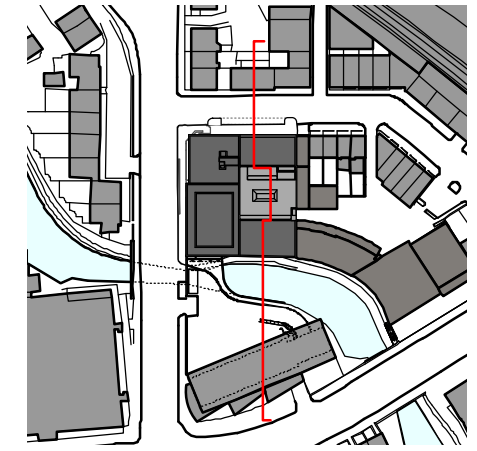
- 1.RESIDENTIAL:
- R.3) Revisions to Courtyard elevations to suit internal layout of apartments
  - R.9) Stair access added to communal roof terrace
  - R.12) Private terrace changed to communal terrace
- 2.COMMERCIAL:
- C.2) Removal of external lightwell in courtyard

Proposed Section AA



Materials:

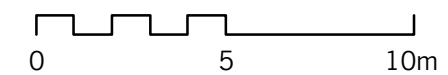
- 1) Brick façade
- 2) Glazed terracotta panels
- 3) Rendered façade with external wall insulation system
- 4) Powder coated composite windows
- 5) Laser Cut metal gates.
- 6) Bronze coloured metal glazed screen
- 7) Translucent glass balustrade
- 8) Metal railing balustrade
- 9) Glazed roof access
- 10) Glass door (residential entrance)
- 11) Glazed double door (office entrance)
- 12) Metal facade cladding
- 13) Sliding metal screens
- 14) Biodiverse Green Roof
- 15) Juliet balcony
- 16) Green Wall



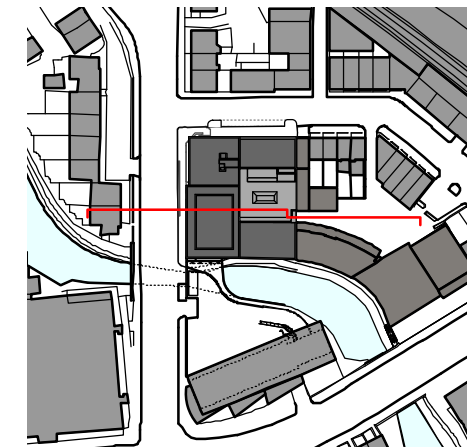
**Rev.D 27/11/2017:**

- 1.RESIDENTIAL:**
- R.1) Add private terraces in courtyard to private apartments.
  - R.2) Arrangement of wheelchair units revised with living area at first floor and bedrooms on ground floor.
  - R.4) Window alterations on Block C Canal side, window arrangement and faience columns widened.
  - R.5) Wall overhang along Block C Canal side at 1st floor omitted.
  - R.6) Block A lightwell and railings amended. Balcony at Ground level omitted.
  - R.10) Permanent obscure glass added. Final spce to be agreed
- 2.COMMERCIAL:**
- C.1) Lantern light design amendment
  - C.2) Removal of external lightwell in courtyard

**Proposed Section BB**







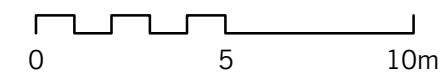
**Materials:**

- 1) Brick façade
- 2) Glazed terracotta panels
- 3) Rendered façade with external wall insulation system
- 4) Powder coated composite windows
- 5) Laser Cut metal gates.
- 6) Bronze coloured metal glazed screen
- 7) Translucent glass balustrade
- 8) Metal railing balustrade
- 9) Glazed roof access
- 10) Glass door (residential entrance)
- 11) Glazed double door (office entrance)
- 12) Metal facade cladding
- 13) Sliding metal screens
- 14) Biodiverse Green Roof
- 15) Juliet balcony
- 16) Green Wall

**Rev.D 27/11/2017:**

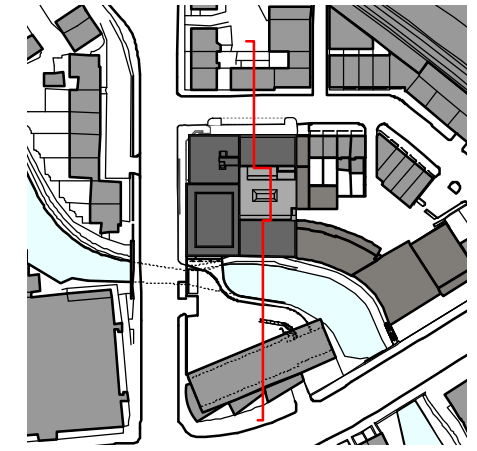
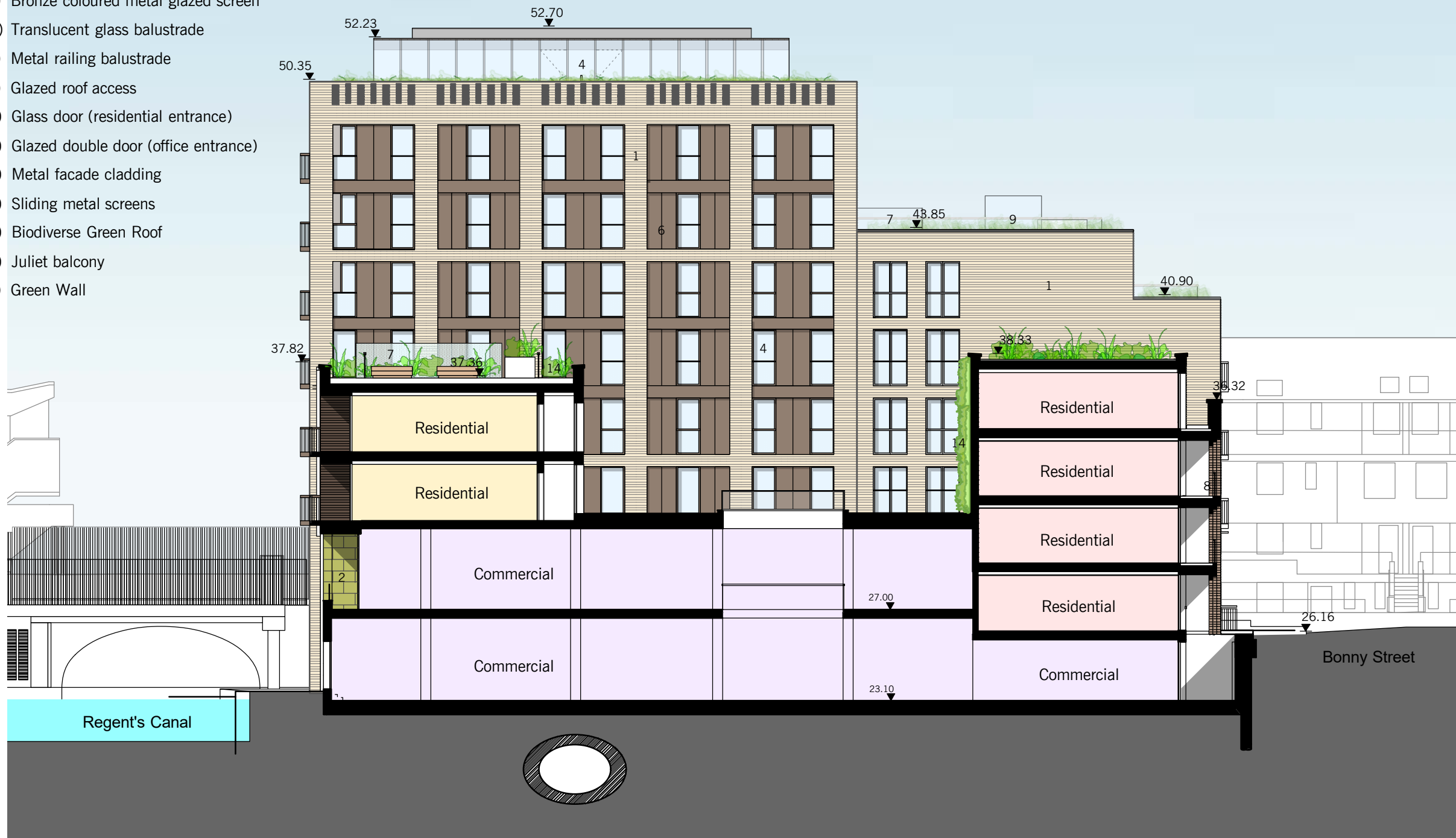
1. RESIDENTIAL:
- R.1) Add private terraces in courtyard to private apartments.
  - R.3) Revisions to Courtyard elevations to suit internal layout of apartments
  - R.10) Permanent obscure glass added. Final spec to be agreed

**Proposed Section CC**



Materials:

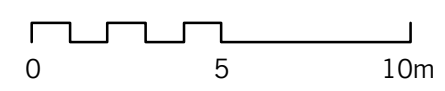
- 1) Brick façade
- 2) Glazed terracotta panels
- 3) Rendered façade with external wall insulation system
- 4) Powder coated composite windows
- 5) Laser Cut metal gates.
- 6) Bronze coloured metal glazed screen
- 7) Translucent glass balustrade
- 8) Metal railing balustrade
- 9) Glazed roof access
- 10) Glass door (residential entrance)
- 11) Glazed double door (office entrance)
- 12) Metal facade cladding
- 13) Sliding metal screens
- 14) Biodiverse Green Roof
- 15) Juliet balcony
- 16) Green Wall

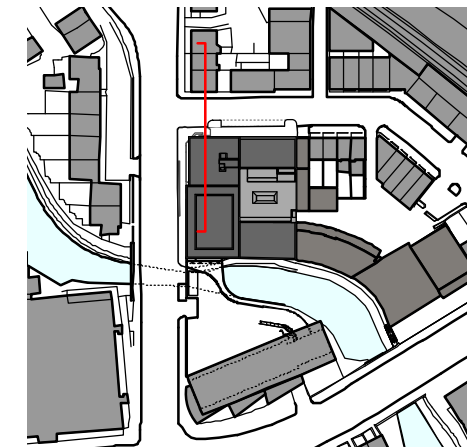
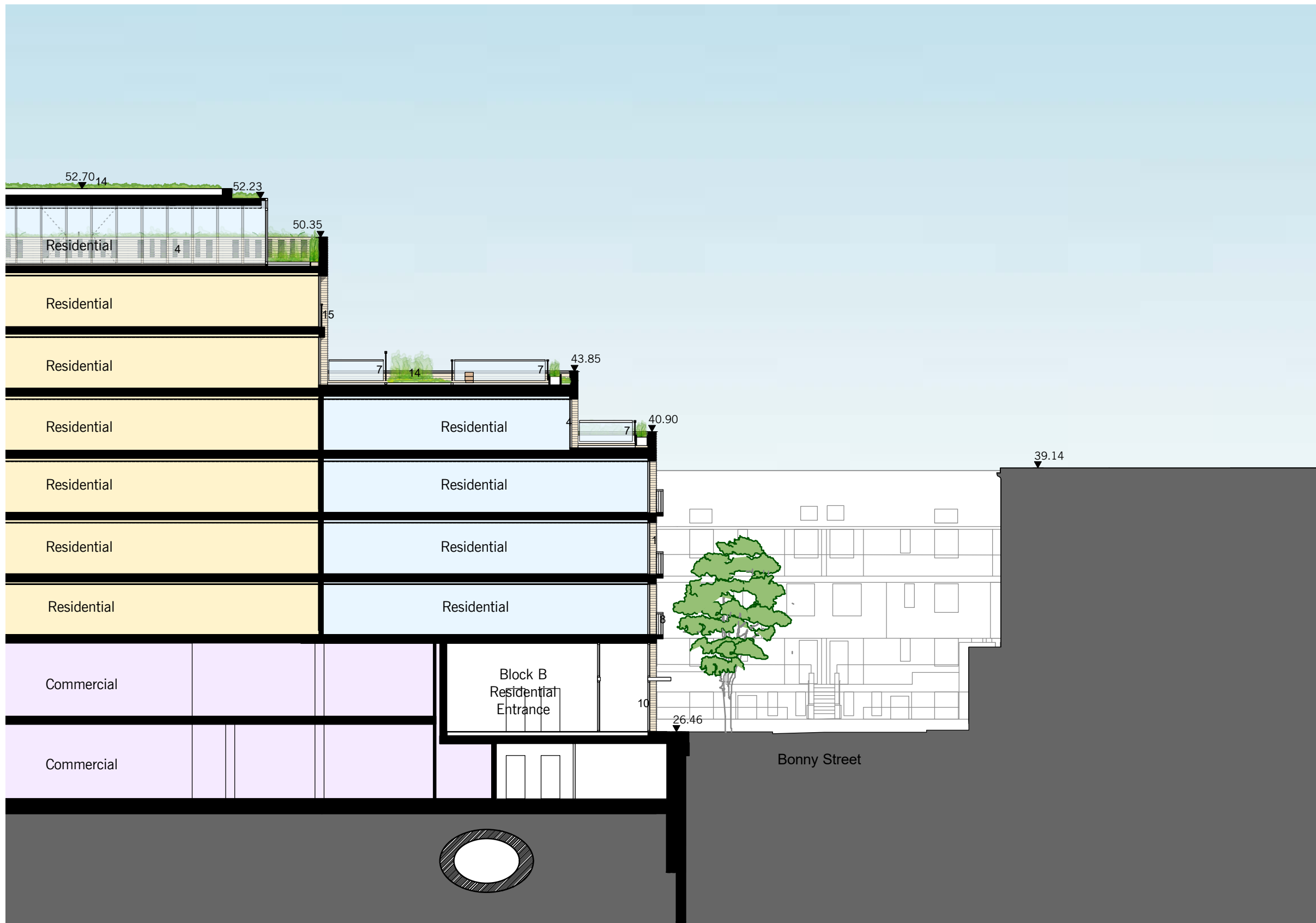


Rev.F 27/11/2017:

- 1.RESIDENTIAL:
- R.1) Add private terraces in courtyard to private apartments.
  - R.2) Arrangement of wheelchair units revised with living area at first floor and bedrooms on ground floor
  - R.4) Window alterations on Block C Canal side, window arrangement and faience columns widened.
  - R.5) Wall overhang along Block C Canal side at 1st floor omitted.
  - R.6) Block A lightwell and railings amended. Balcony at Ground level omitted.
  - R.9) Stair access added to communal roof terrace.
- 2.COMMERCIAL:
- C.1) Lantern light design amendment
  - C.2) Removal of external lightwell in courtyard

Proposed Section DD





**Materials:**

- 1) Brick façade
- 2) Glazed terracotta panels
- 3) Rendered façade with external wall insulation system
- 4) Powder coated composite windows
- 5) Laser Cut metal gates.
- 6) Bronze coloured metal glazed screen
- 7) Translucent glass balustrade
- 8) Metal railing balustrade
- 9) Glazed roof access
- 10) Glass door (residential entrance)
- 11) Glazed double door (office entrance)
- 12) Metal facade cladding
- 13) Sliding metal screens
- 14) Biodiverse Green Roof
- 15) Juliet balcony
- 16) Green Wall

**Rev.A 27/11/2017:**

- 1.RESIDENTIAL:  
 R.8) Residential access to Block B repositioned  
 R.12) Private terrace changed to communal terrace

**Proposed Section EE**

