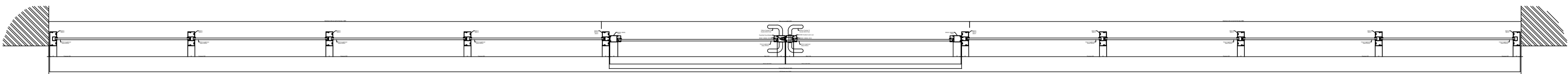
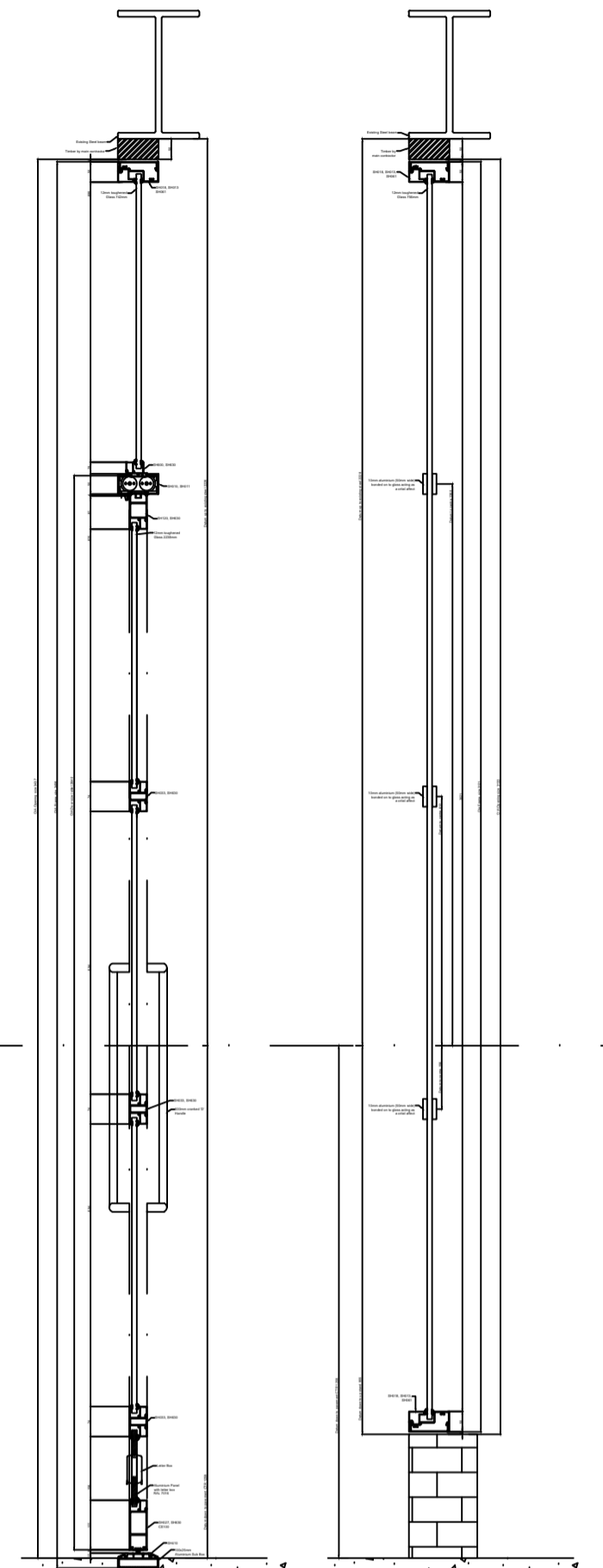
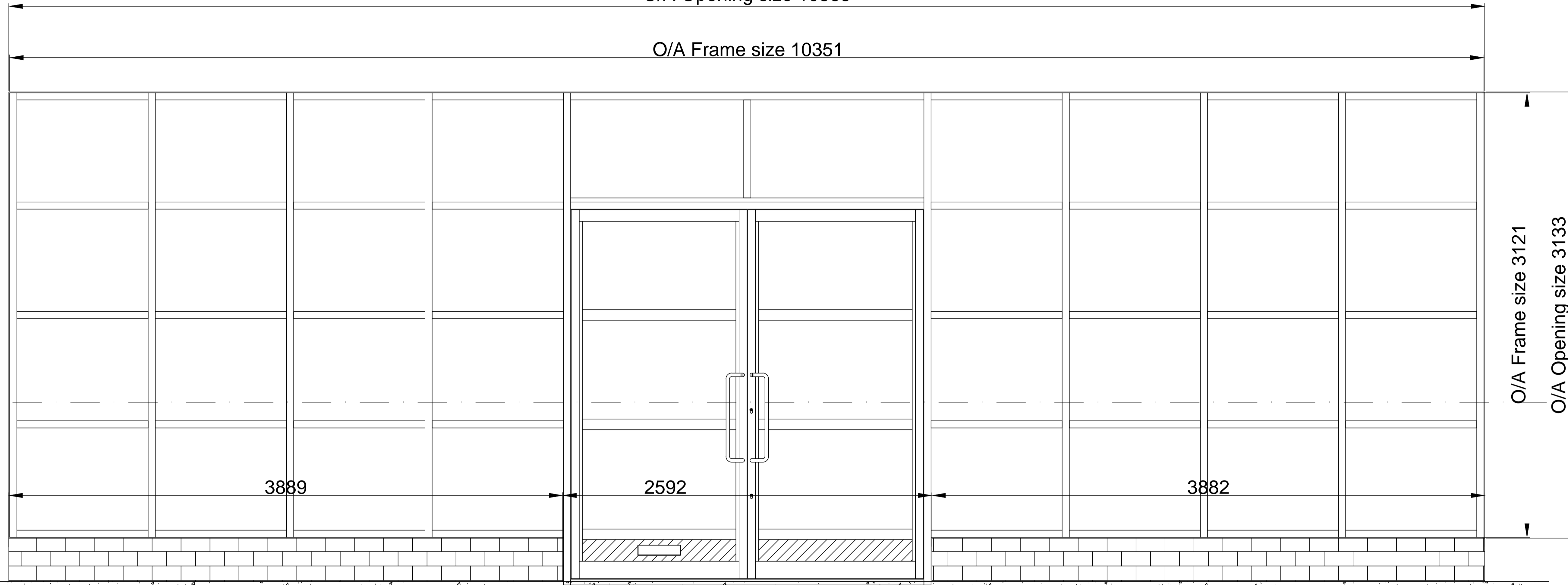


O/A Opening size 10363

O/A Frame size 10351



THIS DRAWING IS THE PROPERTY OF SHOPFRONT SERVICES SOUTHERN LTD, AND MUST NOT BE COPIED OR REPRODUCED EXCEPT WITH THEIR EXPRESS PERMISSION, NOR MAY THE DESIGN OR ANY INFORMATION SHOWN THEREON BE DISCLOSED TO ANY THIRD PARTY. WE WILL NOT BE RESPONSIBLE FOR OTHER CONTRACTUAL DIMENSIONS.

© THIS DRAWING IS COPYRIGHT

JOB No. 6844	CLIENT: STANWAY INTERIORS
SCALE: 1:16	DWG SHEET: A1
DWG NO: 6844_501	REV: B
DRAWN BY: HBG	DATE: 20/09/2017
APPROVED BY: ***	DATE: ***/**/**

PROJECT:	113 REGENTS PARK ROAD
TITLE:	DOUBLE ENTRANCE DOOR FRAME ELEVATION
SITE ADDRESS:	113 REGENTS PARK ROAD LONDON NW1 8UR

NOTES:

Frame:
Smart shopline non-thermally broken aluminium profiles, 100x50mm sections
3mm thick aluminium bonded to glass for crntal affect

Door:
Smart shopline non-thermally broken aluminium profiles sections.
Stiles 56mm
Top Rail 82mm
Bottom Rail 122mm

Ironmongery:
Axim TC-8800 concealed overhead transom closer
Top side load arm TC-8800-T13
Bottom Pivot TC-8800-O2
Flush Bolt FB-G200
600mm cranked 'D' handle
Adams nite MS1890 Dead Hookbolt Latch lock

Finish:
polyester powder coated in RAL 7016 20%
MATT
Glazing:
12mm toughened float



Victoria Industrial Park
Unit 5
Victoria Road
Dartford
Kent
DA1 5AJ
Tel: 01322 292614 Fax: 01322 289952