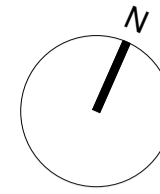




James Wyman Architects
 Studio
 100 Woodstock Rd
 Oxford OX2 7NE
 +44 (0)1865 433 606
 studio@jameswyman.co.uk
 www.jameswyman.co.uk



JOB TITLE
 Belsize Road

DRAWING TITLE
 Proposed Lower Ground and
 Ground Floor Plans

SCALE 1:50

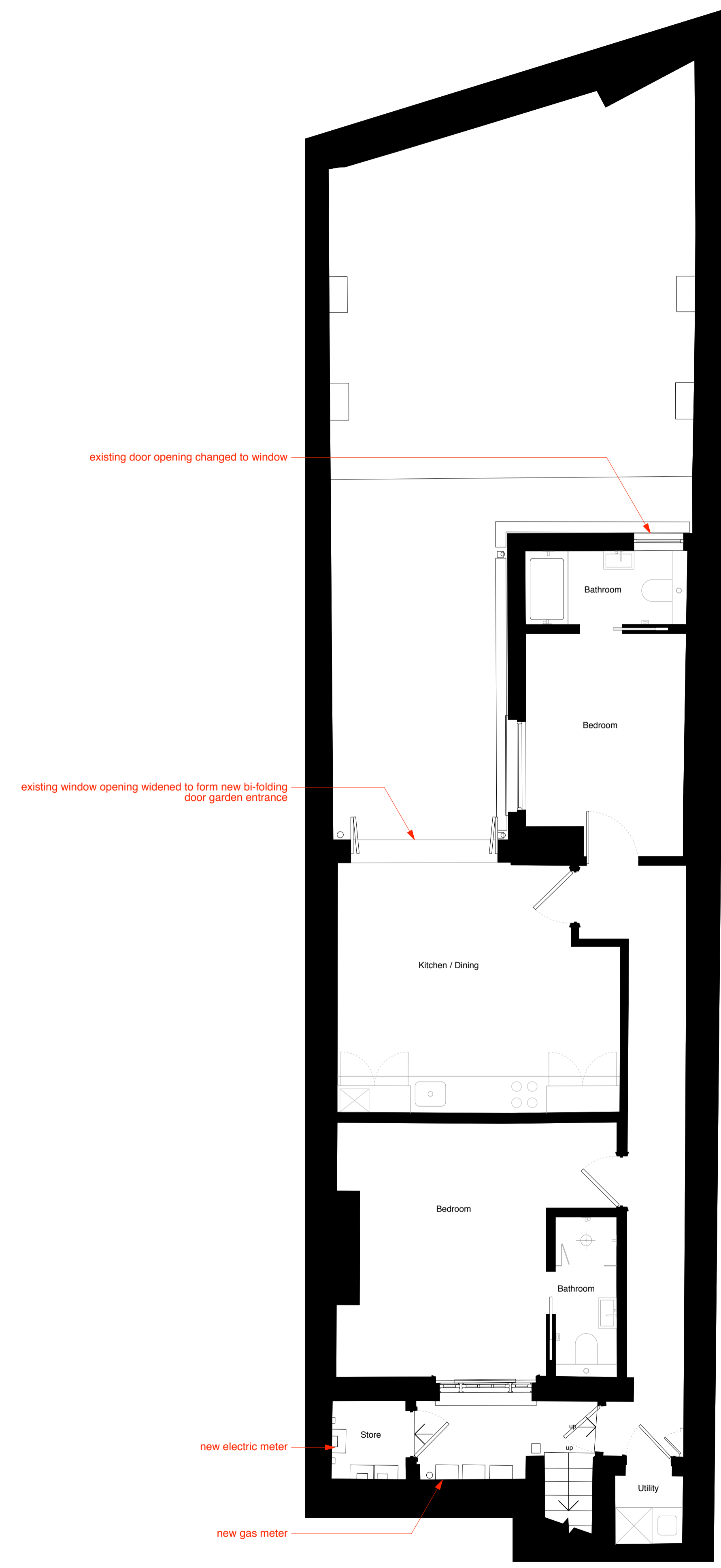
SIZE A1

STATUS Planning

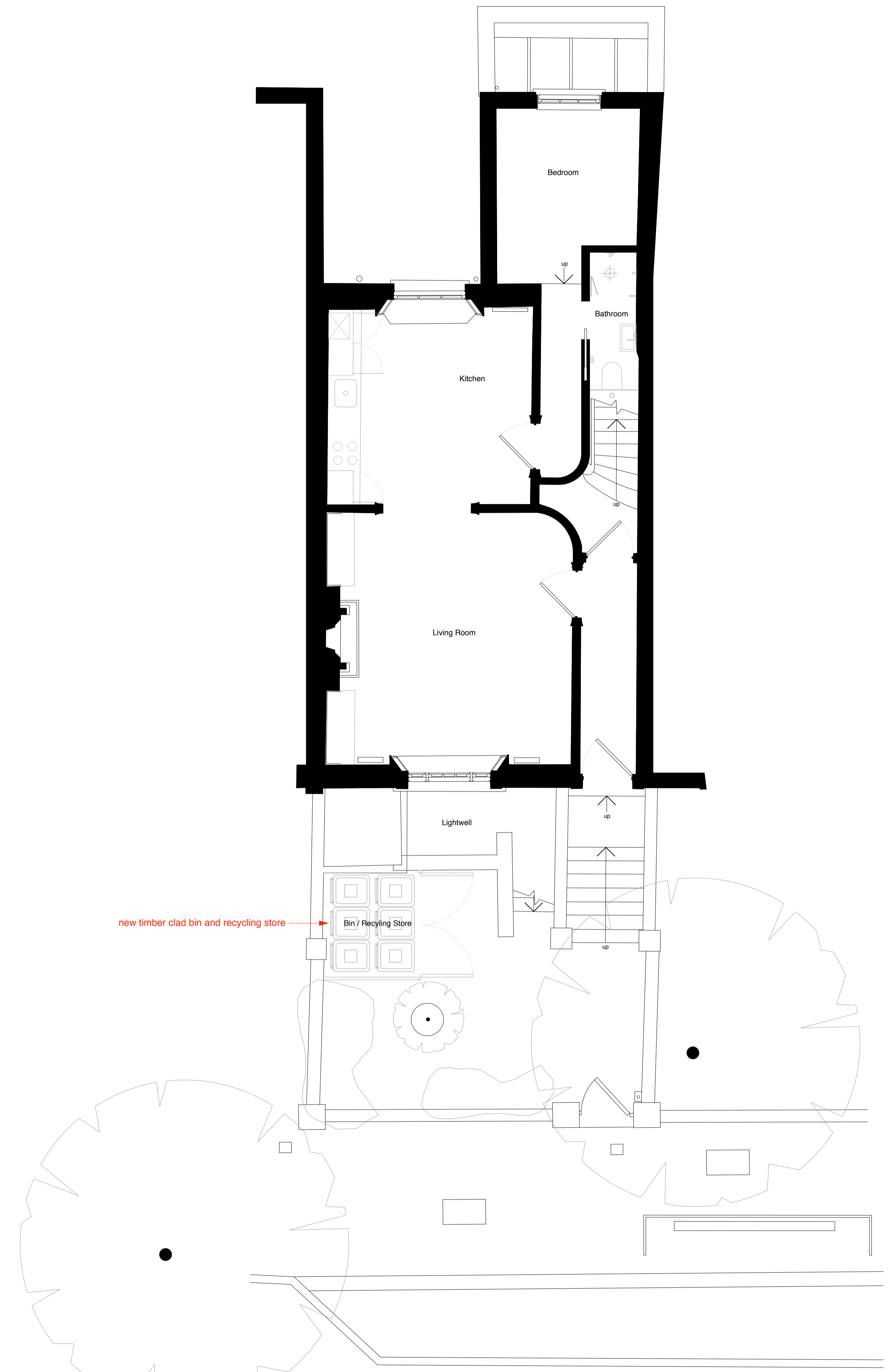
NUMBER JW_03_101_A

REVISION
 A: 21.11.2017: revised for planning

GENERAL NOTES
 1. This drawing is to be read in conjunction with all relevant engineer's and specialist's drawings and specifications. Any discrepancies discovered between drawings are to be reported to the CA immediately.
 2. Health & Safety - All specific drawing notes are to be read in conjunction with the project Health & Safety documentation
 3. Do not scale from this drawing in either paper or digital form. Use written dimensions only. All dimensions are in millimetres. To check the drawing has been printed at the intended scale this bar should be 50mm long at A1 and 25mm long at A3.



Proposed Lower Ground Floor Plan (Apartment 62a)
 1:50 @A1



Proposed Ground Floor Plan (Apartment 62b)
 1:50 @A1