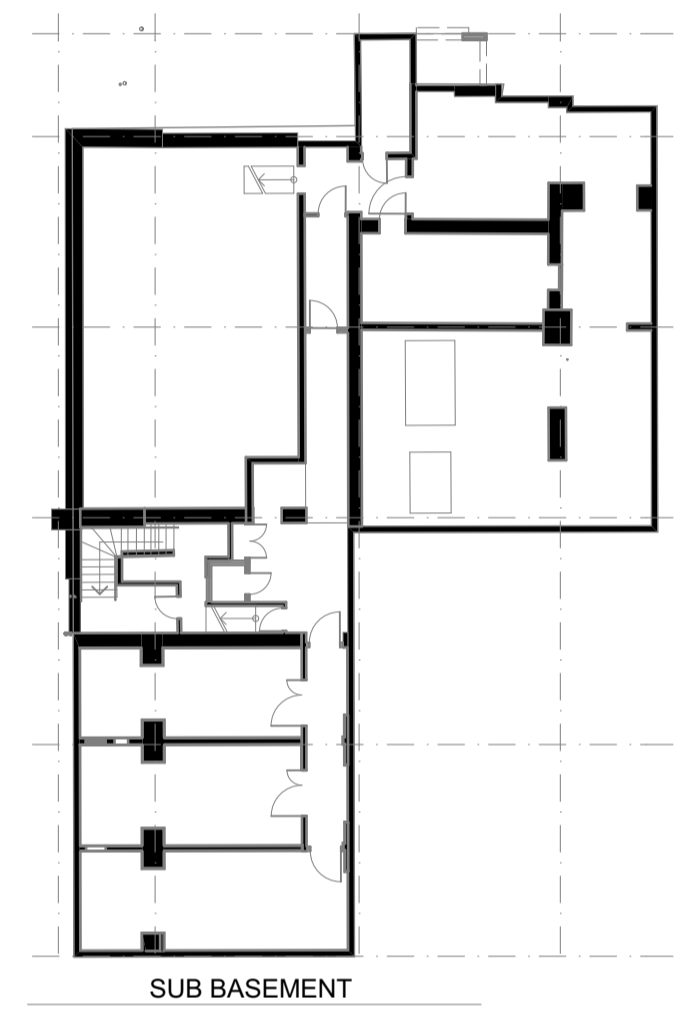




KEY



P02 revised to match GC rev B and stair related comments	LM	BP	20.05.16
P01 First issue	LM	BP	19.05.16
rev	description		drawn checked date

Bond Bryan Architects
 The Church Studio Springvale Road Sheffield S10 1LP
 t +44(0)114 266 2040 w www.bondbryan.com
 e projectemail@bondbryan.co.uk



KLB Referbishment
UCL Gower Place
Kathleen Lonsdale Building

Graham Construction

PHASING PLANS

bba project ref	scale(s)	original paper size
15-159	1:250	A1
name :		
project	originator	volume level type role number
KLB	- BBA	- 00 - ZZ - DR - A - 6400
status :	suitability description :	
S2	SUITABLE FOR INFORMATION	
revision :	revision description :	
P02	PRELIMINARY	

This document is © Bond Bryan Architects Ltd. If in doubt ASK. Drawing measurements shall not be obtained by scaling. Verify all dimensions prior to construction. Immediately report any discrepancies on this document to the Architect. This document shall be read in conjunction with associated models, specifications and related consultant's documents.

KLB - Heritage doors - Phase 2B

All Floors

= Heritage Doors Locations