



Buxus Pyramids with Ornamental Planting



Pleached Carpinus and Pyrus Chanticleer



Wide Country Kerbs



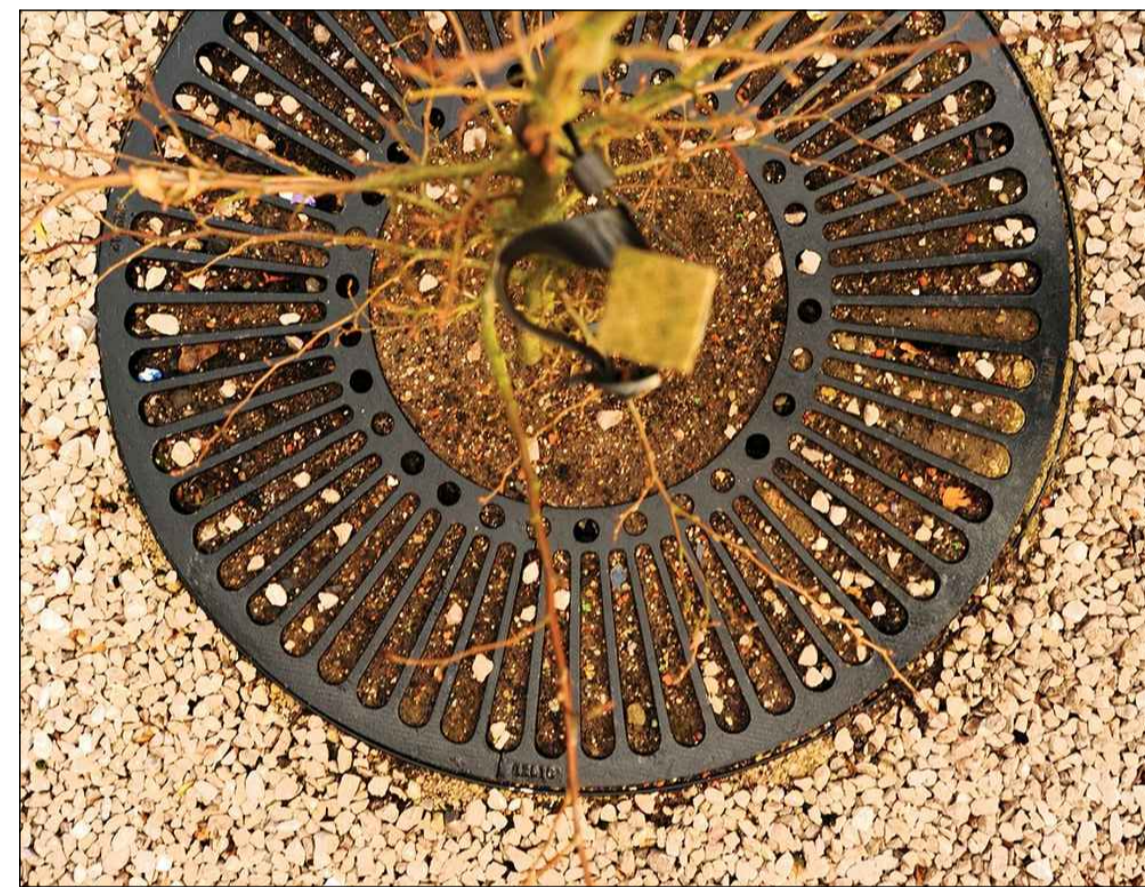
Evergreen Hedging



Wooden Trim Trail Play Equipment



See-saw Rocker Play Equipment



Circular Tree Grilles in Self Binding Gravel



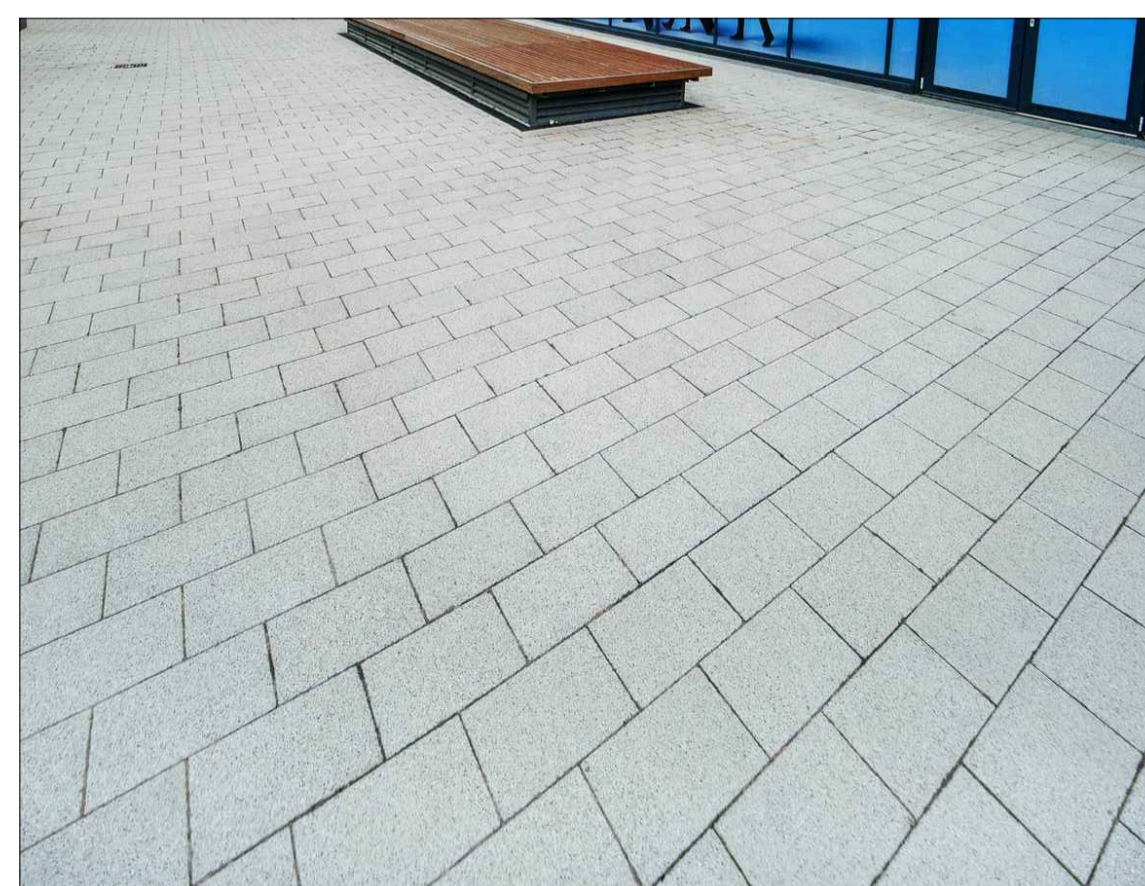
Tegula 'Trio' (Allotment Area)



Hydropave Permeable Car Parking Areas



Fusion Modular Granite Paving (Large Unit)



Fusion Modular Granite Paving (Small Unit)



Steel Frame Seats with Timber Slats

Notes
All dimensions in mm, unless otherwise stated.
All information outside red line boundary shown for contextual purpose only

Notes
All dimensions in mm, unless otherwise stated.

All sub base and concrete specification to engineer's details.

Waterproofing of any element to be specified by others.

All proprietary products shall be installed in accordance with manufacturers written instructions.

Notes
This drawing is to be read in conjunction with - RFM-17-476-DR-L-0001



Scale

13.11.17 EIS minor amendments to details P01 AIP
Date Drawn Description of revision Revision Checked

re-form
landscape architecture

Tower Works, Globe Road,
Leeds LS11 5QG
T: +44 (0)113 245 4695
E: info@re-formlandscape.com
W: re-formlandscape.com

Project
MANSFIELD BOWLING CLUB, CAMDEN
RF17-476

Document title
MATERIAL AND FEATURES IMAGE PALETTE

Client
GENERATOR (MANSFIELD BC) LTD

Drawing scale 1:20
Paper size A1
Drawn by EJS
Checked by AIP
Drawn date 02.11.2017
Checked date 02.11.2017

Drawing number RFM-17-476-DR-L-0020
Status X1
Revision P01

© re-form landscape architecture