



SCALE BAR IN mm

DO NOT SCALE ANY DIMENSIONS OFF THIS DRAWING. ANY DISCREPANCIES BETWEEN THIS DRAWING AND OTHER INFORMATION ARE TO BE REFERRED TO FABRIC (EU) LIMITED WHERE THE DRAWING RELATES TO AN EXISTING BUILDING OR COMPLETED CONSTRUCTION THE CONTRACTOR IS RESPONSIBLE FOR CHECKING THAT THERE IS NO CONFLICT BETWEEN ACTUAL BUILDING DIMENSIONS AND DRAWING DIMENSIONS. IN THE EVENT OF DISCREPANCIES BETWEEN THIS DRAWING AND SUBCONTRACTOR'S APPROVED WORKING DRAWINGS FOR RELEVANT BUILDING COMPONENTS, THE SUBCONTRACTOR'S DRAWING SHALL TAKE PRECEDENCE. ANY CONFLICTS ARISING OUT OF INFORMATION AS NOTED ABOVE MUST BE REPORTED IMMEDIATELY TO FABRIC (EU) LIMITED. THIS DRAWING IS THE COPYRIGHT OF FABRIC (EU) LIMITED. ALL DIMENSIONS ARE IN MILLIMETRES UNLESS OTHERWISE STATED.

CEILING KEY

| | |
|--|-------------------------------------------------------------------------------------------------------------------------------------------------------------------------------------------------------------------------------------|
| | OUT OF SCOPE |
| | HEIGHT = 2150MM (PLEASE NOTE THIS CANNOT BE LOWER THAN 2100MM) PLASTERBOARD SOFFIT AND BULKHEAD TO UNDERSIDE OF CONCRETE BEAM. PLEASE NOTE THE HATCH IS INDICATIVE AT THIS STAGE UNTIL A MEASURED SURVEY DETERMINES THE BEAMS |
| | HEIGHT = 2300MM PLASTERBOARD CEILING |
| | HEIGHT = 2100MM PLASTERBOARD BULKHEAD |
| | LOCKERS AT 2100MM HIGH - CEILING TO SUIT INSTALLATION OF THEM |
| | HEIGHT = TO MATCH EXISTING |
| | CLG-01 - EXISTING CONCRETE SOFFIT RESPRAYED |
| | CLG-02 - EXISTING PLASTERBOARD SOFFIT MADE GOOD WHERE NECESSARY, RE-PAINTED AND ENSURE INTEGRITY OF FIREBOARD IS MAINTAINED. |
| | CLG-03 - NEW PLASTERBOARD CEILING WITH ACCESS PANELS AND BULKHEADS RETURNING TO UNDERSIDE OF EXISTING SOFFIT AT EDGES |

NOTE:

MAKE GOOD ANY CEILING PENETRATIONS TO MATCH EXISTING CEILING TEXTURE/COLOUR
REFER TO M&E CONSULTANT'S DRAWINGS FOR ALL M&E SYMBOLS
ALL LEVELS NOMINAL, REFER TO BUILDING LEVELS ON BASE BUILD ARCHITECT'S DRAWINGS.

BASE BUILD AND PARTITIONS HAVE BEEN TAKEN FROM DRAWINGS PROVIDED BY SPACELAB

FABRIC HAVE NOT UPDATED THE BASE BUILD TO REFLECT SITE CONDITIONS & RECOMMEND A MEASURED SURVEY IS UNDERTAKEN TO ASSESS ANY DISCREPANCIES. FABRIC IS NOT RESPONSIBLE FOR ANY ON SITE DISCREPANCIES.

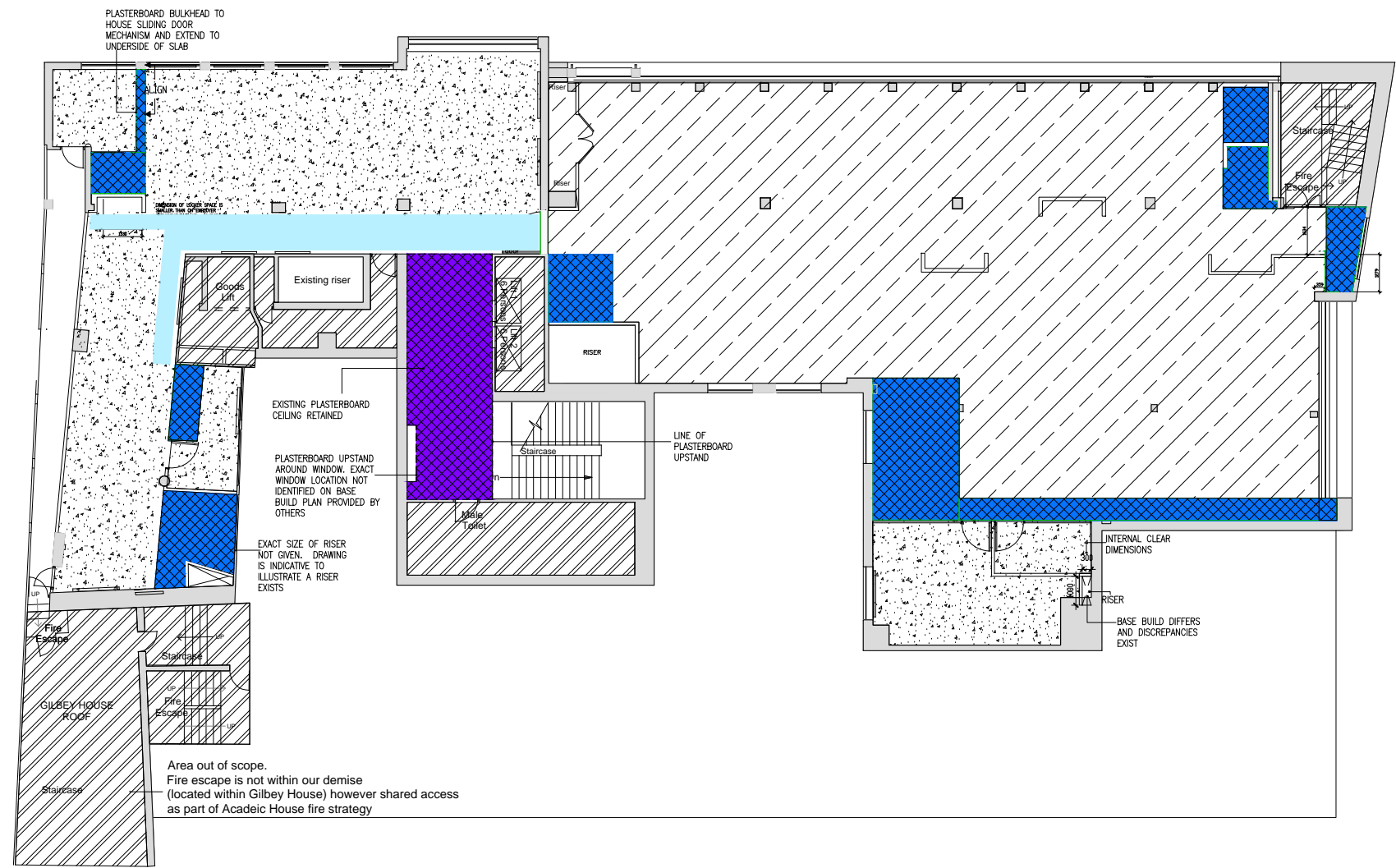
SUB-CONTRACTORS TO ADVISE AND PICK UP ANY DISCREPANCIES AS PART OF THEIR WORKS

SYMBOLS KEY

| | |
|--|-------------------------------------------|
| | SETTING OUT POINTS |
| | CEILING TYPE |
| | CEILING HEIGHT ABOVE FINISHED FLOOR LEVEL |
| | CAVITY BARRIERS ABOVE PARTITIONS |
| | FIRE BARRIER |

| | | | |
|----|----------|---------------------------------------------------------------------------------|-----|
| P5 | 25.04.17 | UPDATED TO INCLUDE RISERS AND MODIFY CEILING TYPES | MRV |
| P4 | 24.04.17 | UPDATED TO SUIT LATEST DRAWINGS AND MARK UP DRAWINGS EMAILED ON 20.04.17 BY ISS | MRV |
| P3 | 05.04.17 | REISSUED TO SHOW REVISED JOINERY | PM |
| P2 | 04.04.17 | MESH REMOVED, NOT PART OF SCOPE | PM |
| P1 | 31.03.17 | FIRST ISSUE | AJ |

| | | |
|----------|------------------|----|
| REV DATE | PURPOSE OF ISSUE | BY |
|----------|------------------|----|



DRAWING FOR DISCUSSION PURPOSES ONLY

FABRIC Interior Design + Architecture

Fabric (eu) Ltd
179 Southbank Bridge Road
London SE1 8SP
T 020 7407 4595
E contact@fabric.eu.com
www.fabric.eu.com