

Drainage Strategy
Foul Drainage
 Private gravity system discharging into Thames Water foul sewer.
Surface Water Drainage
 Gravity system discharging into tanked cellular storage sized to accommodate 1 in 100 year storm with 30% allowance for climate change. Attenuated green field runoff rate discharge into existing pond controlled by Hydrobrake or similar device.

NOTE:
 1. DO NOT SCALE, IF IN DOUBT ASK.
 2. THIS DRAWING IS TO BE READ IN CONJUNCTION WITH ALL RELEVANT STRUCTURAL ENGINEER'S DRAWINGS AND DETAILS. THE SPECIFICATION FOR THE WORKS, THE RELEVANT ARCHITECT'S DRAWINGS AND ANY OTHER SPECIALIST'S DRAWINGS.

Drainage Key

Sewers

—●—●—	Foul water drain (private/non adoptable)
—●—●—	Surface water drain (private/non adoptable)
—●—●—	Foul water sewer (Adoptable)
—●—●—	Surface water sewer (Adoptable)
—●—●—	Highway drain (Adoptable)
—●—●—	Foul rising main
—●—●—	Existing highway drain
—●—●—	Existing foul water drain (private/non adopted)
—●—●—	Existing surface water drain (private/non adopted)
—●—●—	Existing foul water sewer (Adopted)
—●—●—	Existing surface water sewer (Adopted)
—●—●—	Existing combined water sewer (Adopted)
—●—●—	Redundant sewer

Chamber Key

○	FW	Mini access chamber (mac) - 300mmØ *
○	SW	PPIC - 475mmØ *
□		P.C.C. units/brick *
□		Adoptable demarcation manhole within 1m of boundary *
○		Manhole Depth 1.25 to 1.5m *
○		Depth 1.55 to 3.0m *

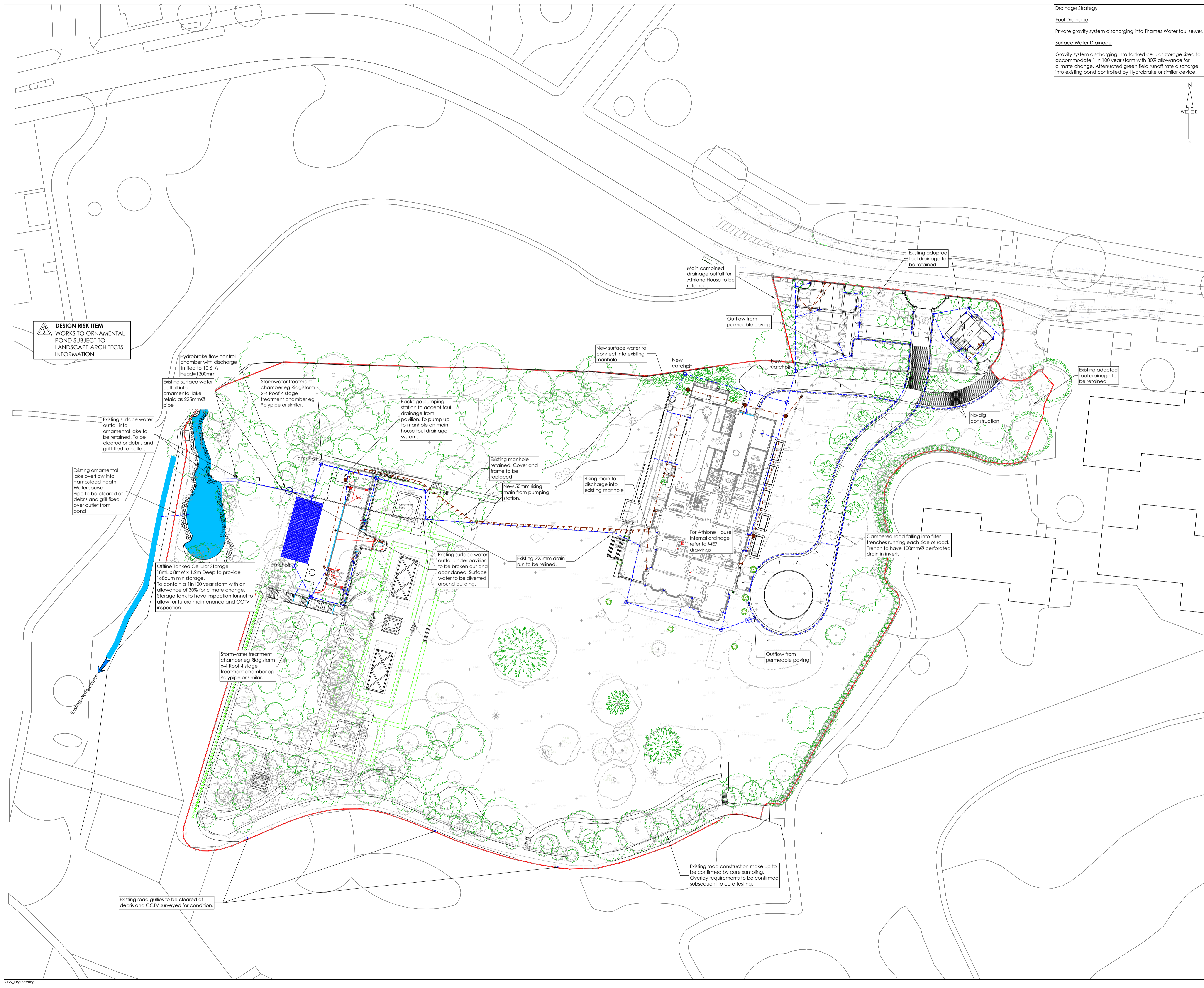
General note
 Refer to standard details & long sections for chamber sizes. Size may need to increase dependant on number of incoming pipes/size of incoming pipes.

—	Surface water rodding eye
F1	Manhole reference number
○	Rain water down pipe (roddable access)
○	Soil vent pipe/soil stack
○	Yard gully (150m - 200mmØ trapped)
○	Road gully (trapped) C250
○	Floor gully (trapped)
—	Linear drainage channel
—	Cellular storage (refer to drawing for sizes)
—	Headwall
—	Retaining wall

FFL
 Finished Floor Level (FFL)

No Dig construction (see drg 1480-DR-56).

DESIGN RISK ITEM
 WORKS TO ORNAMENTAL POND SUBJECT TO LANDSCAPE ARCHITECTS INFORMATION



P10	04/10/17	Amended to address drawing review	SNN	DJ
P09	13/09/17	Drainage strategy updated and water treatment added	SNN	DJ
P08	25/08/17	Drainage updated	SNN	DJ
P07	22/07/17	Drainage updated to address 2nd CCTV. Access road changed to permeable paving	SNN	DJ
P06	19/06/17	Updated to new layout. Drainage amended to suit	SNN	DJ
P01	19/07/16	Initial issue	ATD	DJ
Rev.	Date	Amendments	By	Chkd

engineersHRW
 London 0207 407 9575 Oxford 01865 251 206 www.ehrw.co.uk

Project:
Athlone House
 Hampstead Lane
 London

Drawing title:
Site-wide Drainage Strategy Plan

Scale at A1:	Drawn by:	Date:	Chk'd by:
1:500	ATD	19/07/2016	DJ

Preliminary			
Project Number:	Drawing Type:	Drawing No:	Revision:
1480	DR	50	P10