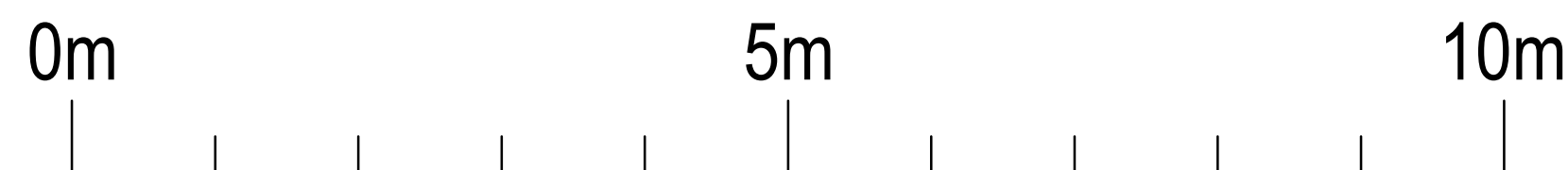
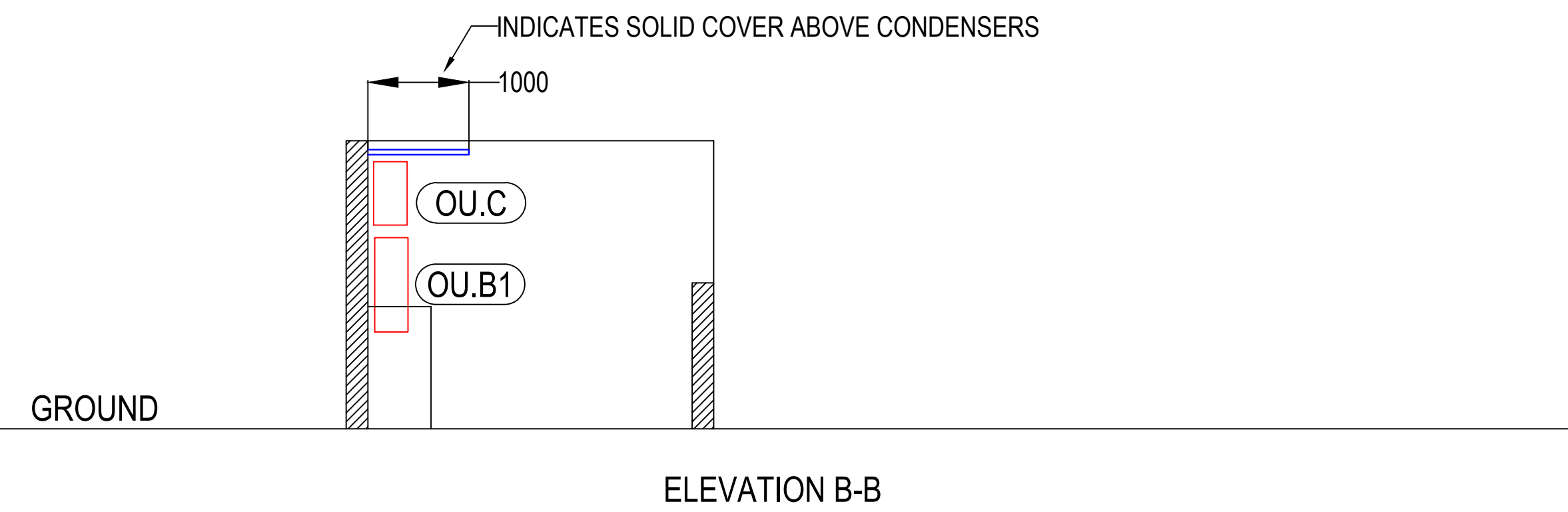
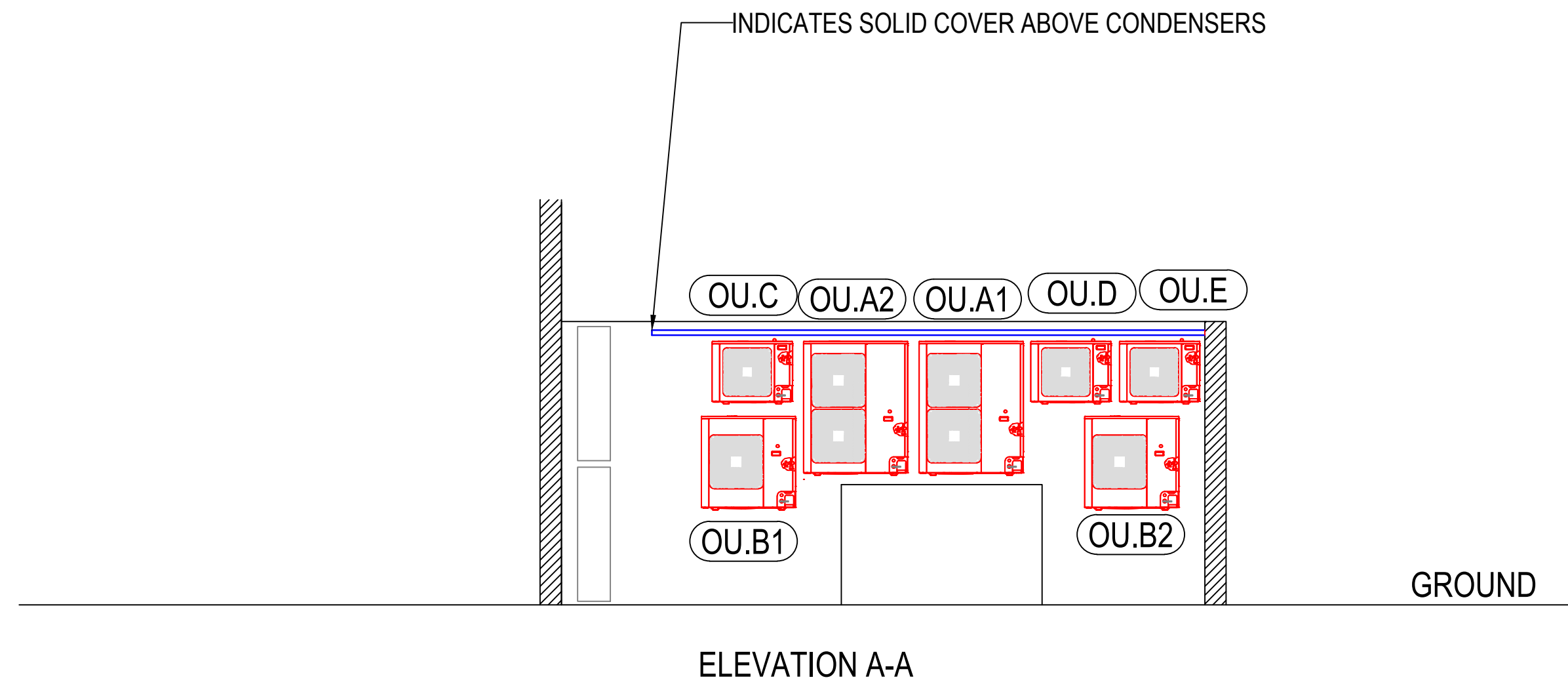


Do Not Scale.
All Figured Dimensions To Be Checked On Site Prior To Construction.
All Copyright Reserved.



VIEW A-A

GENERAL NOTES:

1. ALL SERVICES/ROUTES THROUGHOUT BUILDING TO BE FULLY CO-ORDINATED ON SITE.
2. DRAWING TO BE READ IN CONJUNCTION WITH MECHANICAL INSTALLATION SPECIFICATION AND ALL OTHER RELEVANT DRAWINGS.
3. DUCTWORK MATERIAL & INSTALLATION TO DW1144 CLASS 'A'. EXTERNAL DUCTWORK INSULATION SHALL BE AS ELSEWHERE FINISHED WITH POLYISOBUTYLENE SHEETING
4. FINAL DESIGN SHOP DRAWING AND DETAIL CO-ORDINATION DRAWINGS TO BE SUBMITTED FOR ENGINEER COMMENT PRIOR TO START ON SITE.
5. FIRE DAMPERS TO BE PROVIDED AT ALL PENETRATIONS THROUGH FIRE COMPARTMENTS. SEE ARCHITECT'S DRAWING FOR COMPARTMENTATION DETAILS.
6. DUCTWORK ACCESS DOORS TO BE PROVIDED ADJACENT TO EACH CHANGE OF DIRECTION, DAMPERS AND DUCT MOUNTED EQUIPMENT OR EVERY 10m.
7. PROVIDE VOLUME CONTROL DAMPERS ON ALL DUCTWORK BRANCHES.

PLANT SCHEDULE:
AIR CONDITIONING- MITSUBISHI ELECTRIC

SYSTEM A - TWIN SPLIT SYSTEM SERVING STUDIO 1
OU.A1 AND OU.A2 - OUTDOOR UNITS - PUHZ-ZRP100YKA
SIZE - 1050W x 370D x 1338H
AC.A1 AND AC.A2 - INDOOR UNITS - PLA-ZRP100BA

SYSTEM B - TWIN SPLIT SYSTEM SERVING STUDIO 2
OU.B1 AND OU.B2 - OUTDOOR UNITS - PUHZ-ZRP71YKA
SIZE - 950W x 360D x 943H
AC.B1 AND AC.B2 - INDOOR UNITS - PLA-RP71BA

SYSTEM C - SPLIT SYSTEM SERVING FEMALE CHANGING ROOM
OU.C - OUTDOOR UNIT - PUHZ-ZRP50YKA
SIZE - 809W x 300D x 630H
AC.C1 AND AC.C2 - INDOOR UNIT - PKA-RP25HAL

SYSTEM D - SPLIT SYSTEM SERVING MALE CHANGING ROOM
OU.D - OUTDOOR UNIT - PUHZ-ZRP35YKA
SIZE - 809W x 300D x 630H
AC.D - INDOOR UNIT - PKA-RP35HAL

SYSTEM E - SPLIT SYSTEM SERVING RECEPTION
OU.E - OUTDOOR UNIT - PUHZ-ZRP35YKA
SIZE - 809W x 300D x 630H
AC.E - INDOOR UNIT - PKA-RP35HAL

B	REVISED TO ACOUSTIC REPORT	HN	12/11/2017
A	ISSUED FOR PLANNING	HN	08/11/2017
REV	DETAILS	BY	APP DATE

CLIENT:

FRAME

PROJECT:

FARRINGDON ROAD

DRAWING TITLE:

GROUND FLOOR
PROPOSED ELEVATION

DRAWN BY: H.NISIC APPROVED BY: DATE: NOV 2017

PROJECT No.: L21XX DRAWING No.: M002 SCALE: 1:50 @ A1



LEHDING SERVICES DESIGN LTD
Unit 10, 10 Redlands Crescent, Lame, Co. Antrim, N.Ireland, BT40 1FF. Tel: +44(0) 2828 277 123.
Global House, Ashley Avenue, Epsom, London, KT18 5AD, Tel: +44(0) 1372 253 207.
Web: www.lehding.co.uk Email: info@lehding.co.uk