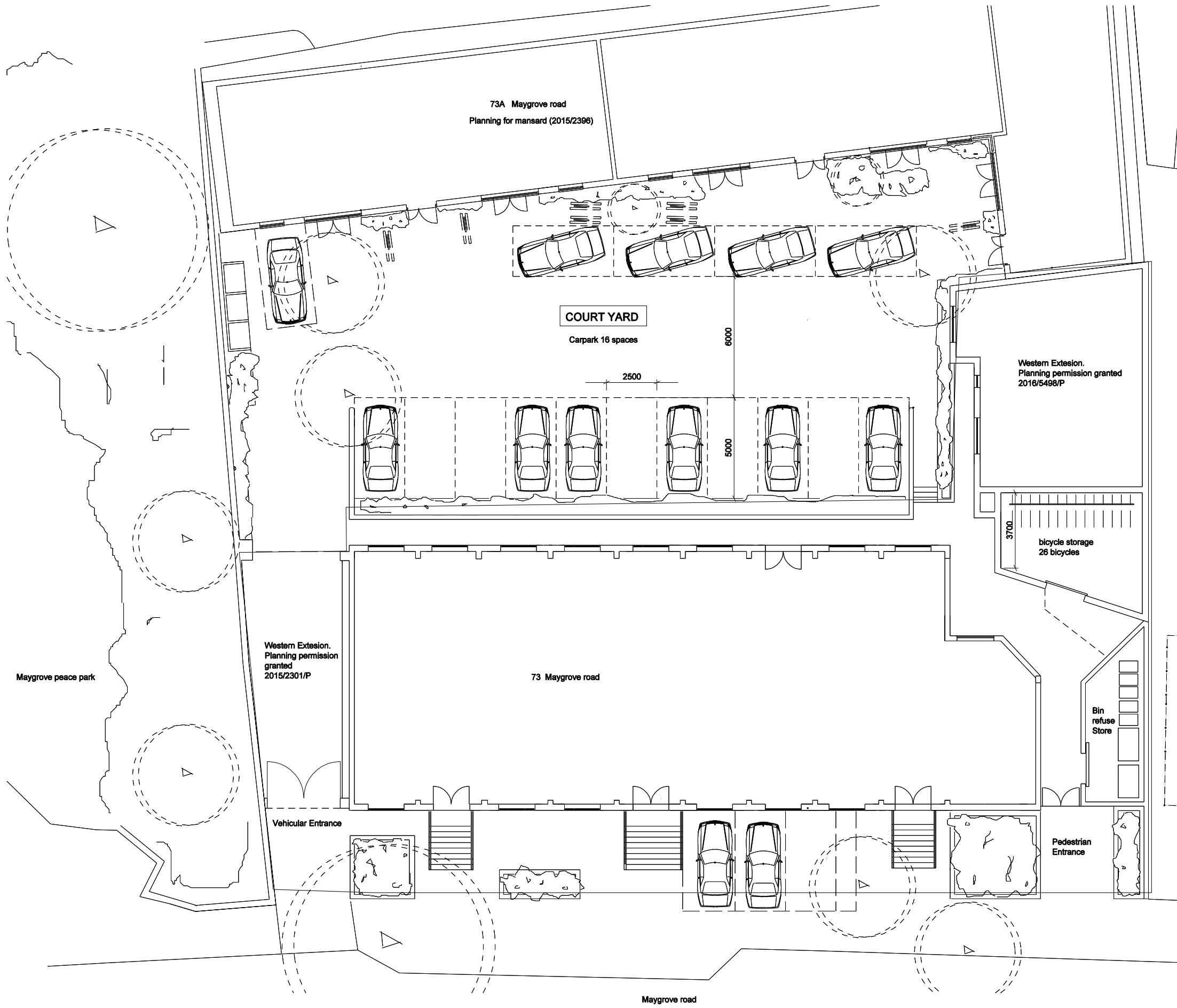


notes
 The ownership of the copyright of this drawing is retained by the architect whose consent must be obtained before any use or reproduction of the drawing or part thereof can be made. This drawing should be read in conjunction with all other relevant documentation



Liddell road Development

A	17/11/17	For Planning
/	31/03/17	For Planning
rev	date	amendment
project	73 Maygrove road	

scale
 1:200 @ A3

drawing
 Existing / Approved
 Site Plan

drawing no
 PL -100 A

Paul+O Architects Ltd

unit 8, 73 maygrove road
 west hampstead
 london nw6 2eg
 t/f +44 020 7604 3818
 paul@paul-o-architects.com

