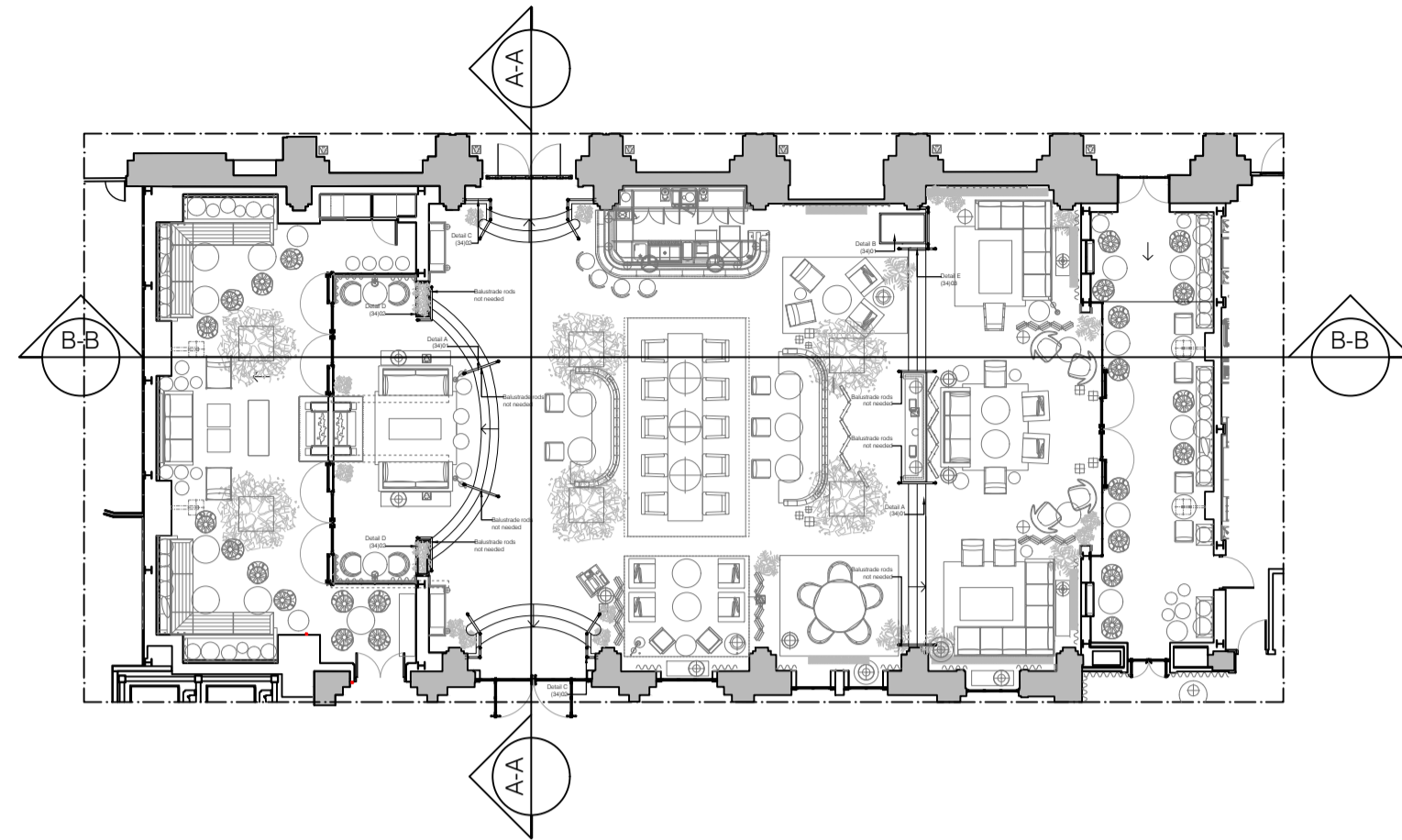
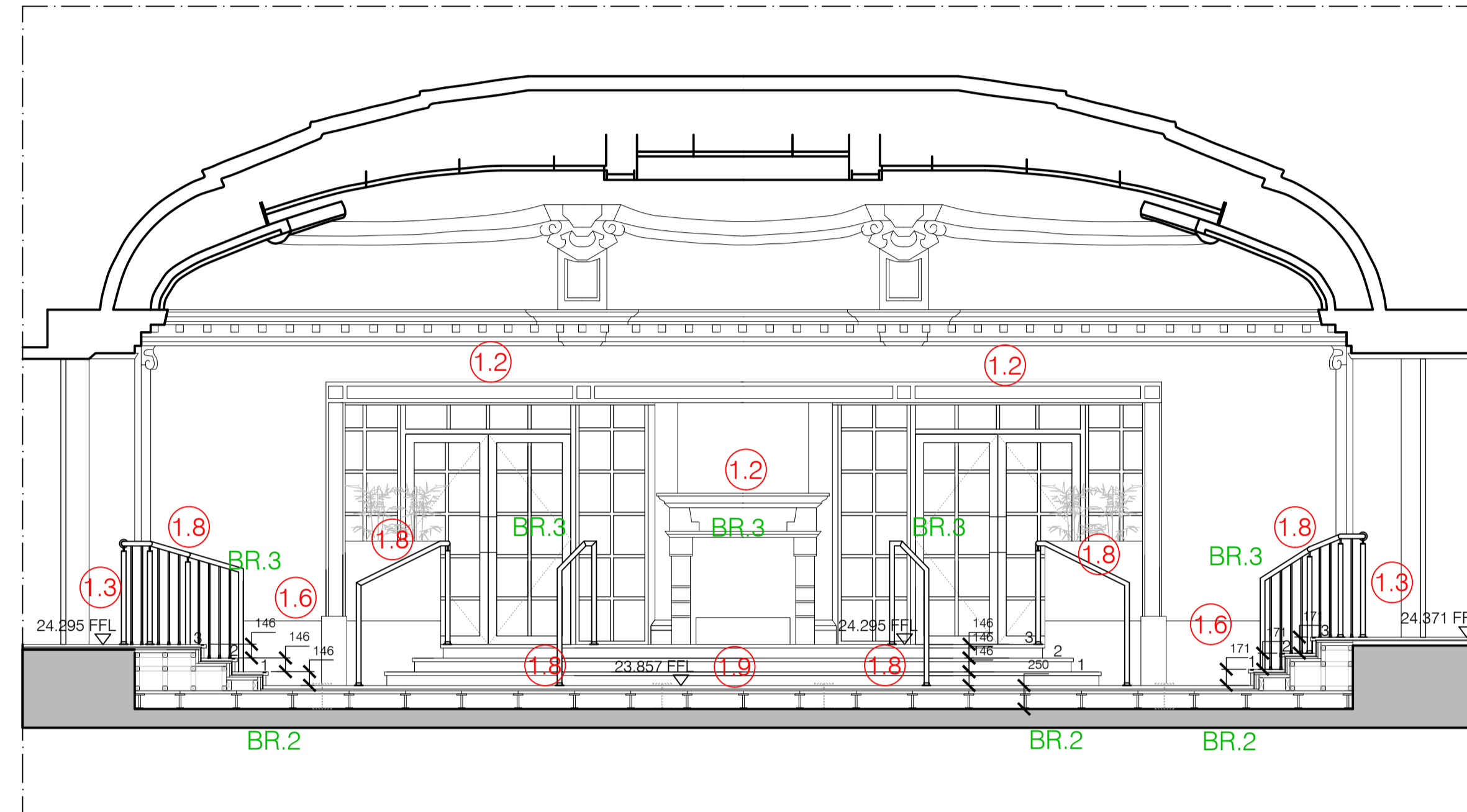


OPTION 3

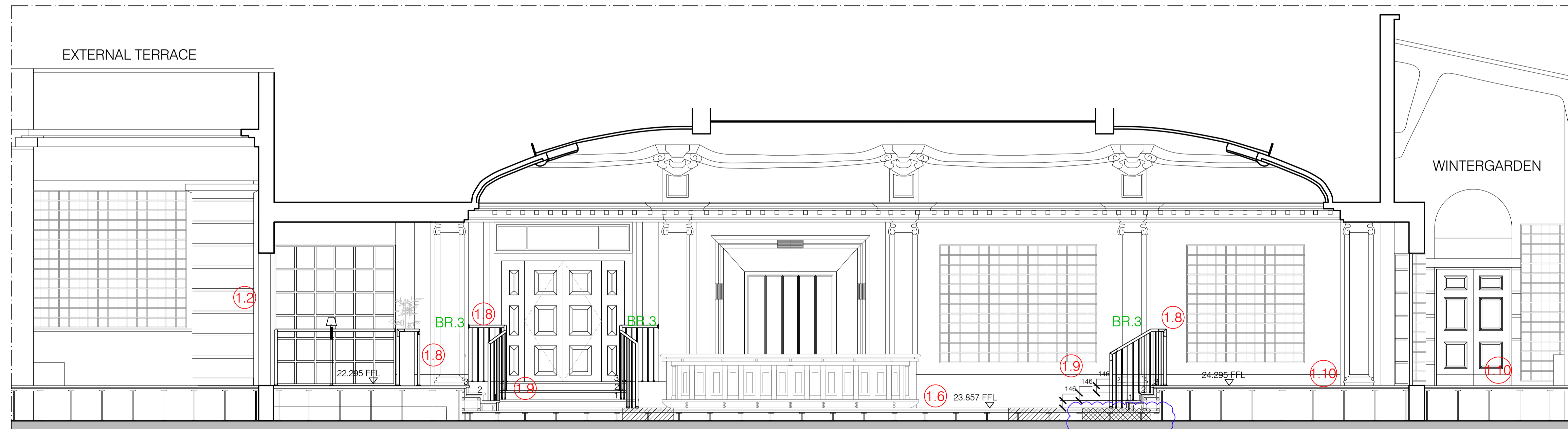
- Central Palm Court floor level lowered to minimum level.
- External terrace retained at higher level with adjacent raised platform to allow existing steels to be retained and no modifications necessary to existing glazed screens and fireplaces.
- Level access from Foyer to Ballroom retained via raised platform adjacent Wintergarden.
- Simple platform lift to facilitate wheelchair access from raised platform to lower level.



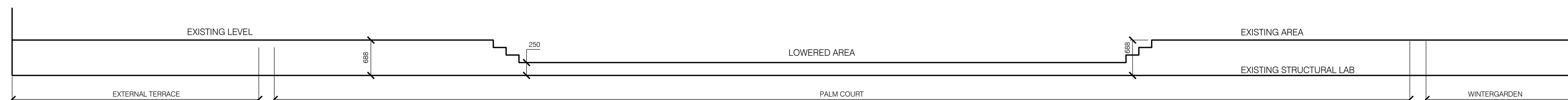
Key Plan  
Scale 1:200@A1 / 1:400@A3



Section A  
Scale 1:50@A1 / 1:100@A3



Section B  
Scale 1:50@A1 / 1:100@A3



Sketch section through Palm Court

Rev	Date	Details	Drawn by	Checked by
A	08/08/2017	Update with Interior designer option	PV	AH
B	07/09/2017	Amended as per Principal comments	PV	AH
C	25/09/2017	Amended as per S&T comments	PV	AH

- Notes:
- Ventilation grills to air plenum retained. Ventilation strategy to be reviewed by MEPH consultant due to reduced depth raised floor.
  - Fireplace and glass screens unchanged
  - Side steps replaced finished to match floor. Doors may need to be relocated (no landing).
  - Planters reduced, level with FFL.
  - PR3 Single Step vertical platform lift by Panova. Gate balustrade with glass panels added to prevent from falling.
  - Wall finishes to be extended down to lowered FFL.
  - Bar lowered and wall finishes to be extended.
  - Handrail at changes in floor level.
  - Finishes to new steps to match floor finish.
  - Level access from entrance Foyer to Ballroom across right hand side.
  - New door in existing opening
  - New opening and door to External Terrace access
  - DDA Push button or sensor required for a power operated door

- Building Regulations Notes:
- BR.1 Divisions of flights should not be more than 2m wide, measured between the inside edges of handrails. BRegs. Part K1, Diagram 1.5.
  - BR.2 Minimum rise for General Access Stair 150mm. BRegs. Part K1, Table 1.1.
  - BR.3 Guarding 1100mm height and 900mm on stairs. Glass panel added to prevent from falling. BRegs. Part K1, Diagram 1.12, & Part K2, Diagram 3.1.
  - BR.4 DDA Push button or sensor for a power operated door required between 750-1000mm level height. BRegs. Part M2, Sections 2.08-2.24.

Note:  
Drawing to be read in conjunction with drawings:  
(21)01 Proposed Palm Court Floor Plan  
(34)01 Proposed Balustrade Details I  
(34)02 Proposed Balustrade Details II  
(43)01 Proposed Floor finishes setting out I  
(43)02 Proposed Floor finishes setting out II

S & T (Ltd)	
client name	Russell Hotel
	London
project	Ground Floor - Palm Court Sections (Option 3)
title	Preliminary
status	08/08/2017 PV
scale	1:50@A1/1:100@A3 AH
checked	
drawing number	(21)02
revision	C 832-03
job number	

**PRELIMINARY**