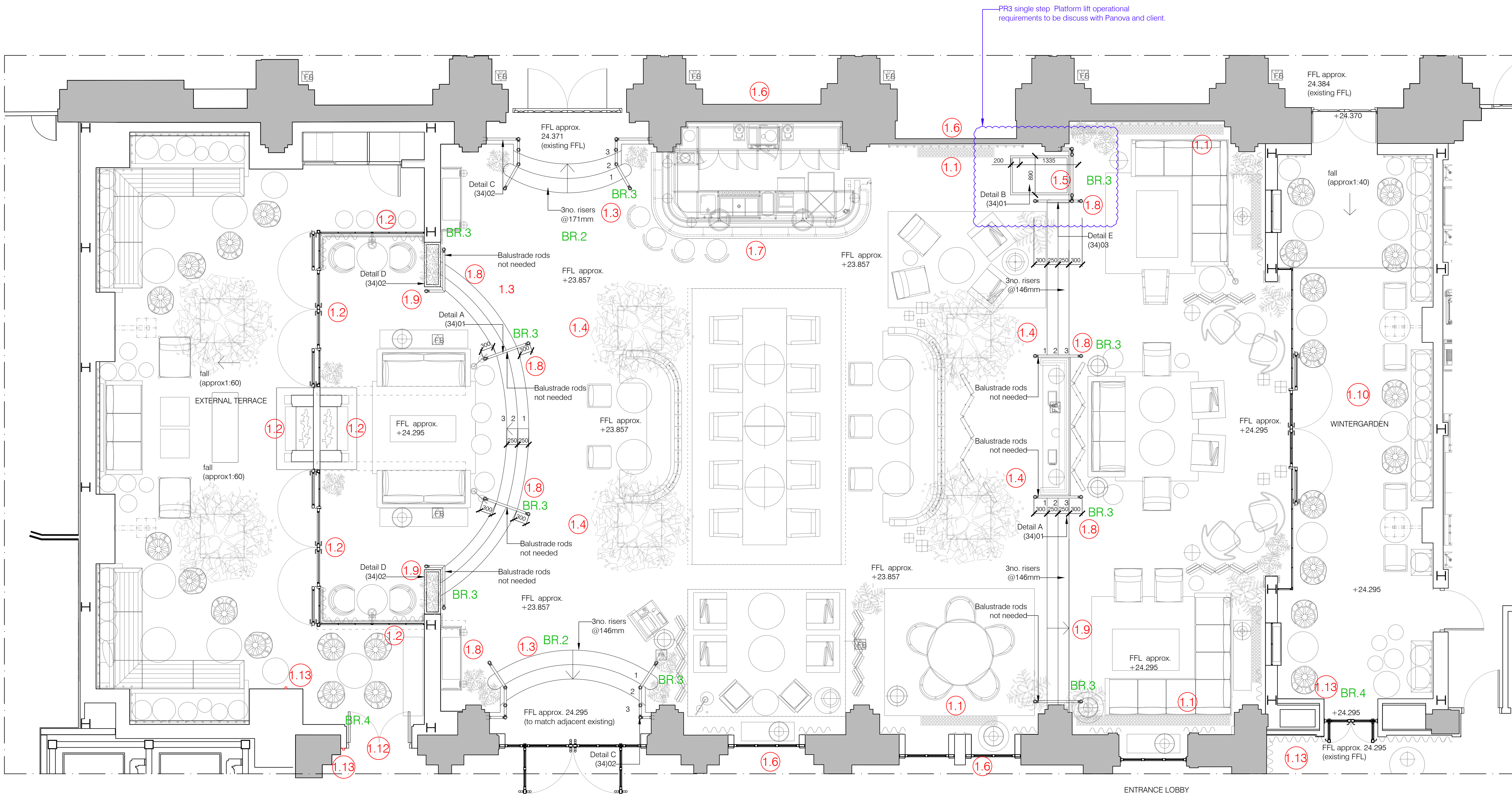


OPTION 3

- Central Palm Court floor level lowered to minimum level.
- External terrace retained at higher level with adjacent raised platform to allow existing steels to be retained and no modifications necessary to existing glazed screens and fireplaces.
- Level access from Foyer to Ballroom retained via raised platform adjacent Wintergarden.
- Simple platform lift to facilitate wheelchair access from raised platform to lower level.

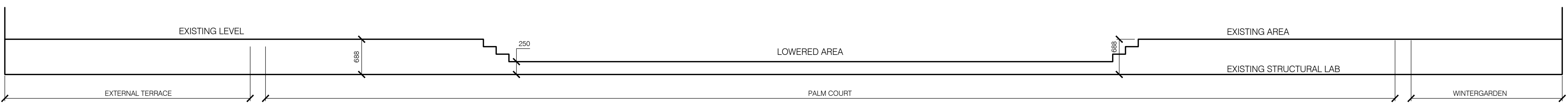


- Notes:
- Ventilation grills to air plenum retained. Ventilation strategy to be reviewed by MEPH consultant due to reduced depth raised floor.
 - Fireplace and glass screens unchanged
 - Side steps replaced finished to match floor. Doors may need to be relocated (no landing).
 - Planters reduced, level with FFL.
 - PR3 Single Step vertical platform lift by Panova. Gate balustrade with glass panels added to prevent from falling.
 - Wall finishes to be extended down to lowered FFL.
 - Bar lowered and wall finishes to be extended.
 - Handrail at changes in floor level.
 - Finishes to new steps to match floor finish.
 - Level access from entrance Foyer to Ballroom across right hand side.
 - New door in existing opening
 - New opening and door to External Terrace access
 - DDA Push button or sensor required for a power operated door

- Building Regulations Notes:
- BR.1** Divisions of flights should not be more than 2m wide, measured between the inside edges of handrails. BRegs. Part K1, Diagram 1.5.
 - BR.2** Minimum rise for General Access Stair 150mm. BRegs. Part K1, Table 1.1.
 - BR.3** Guarding 1100mm height and 900mm on stairs. Glass panel added to prevent from falling. BRegs. Part K1, Diagram 1.12, & Part K2, Diagram 3.1
 - BR.4** DDA Push button or sensor for a power operated door required between 750-1000mm level height. BRegs. Part M2, Sections 2.08-2.24.

Note:
Drawing to be read in conjunction with drawings:
(21)02 Proposed Palm Court Sections
(34)01 Proposed Balustrade Details I
(34)02 Proposed Balustrade Details II
(43)01 Proposed Floor finishes setting out I
(43)02 Proposed Floor finishes setting out II

Palm Court Plan
Scale 1:50@A1 / 1:100@A3



Sketch section through Palm Court

client name	S & T (Ltd)
	Russell Hotel
	London
project	Ground Floor - Palm Court Floor Plan (option 3)
title	Preliminary
date	19/06/2017
drawn	PV
checked	AH
scale	1:50@A1/1:100@A3
drawing number	(21)01
revision	C
job number	832-03