



Concept Visual for Consented Palm Court Interiors

Analysis

3.3 Existing Woburn Suite ('Palm Court') - prior to strip-out

Within the centre of the ground floor public area was the Woburn Suite – originally a form of 'Palm Court' providing a light & open space directly linking all the surrounding amenities.

This space was however dramatically altered over the years and very little of the original form retained. A raised floor was introduced and the glazed roof obscured externally by the introduction of a large servicing plant cage sitting within the courtyard above and internally with a modern acoustic ceiling tile.

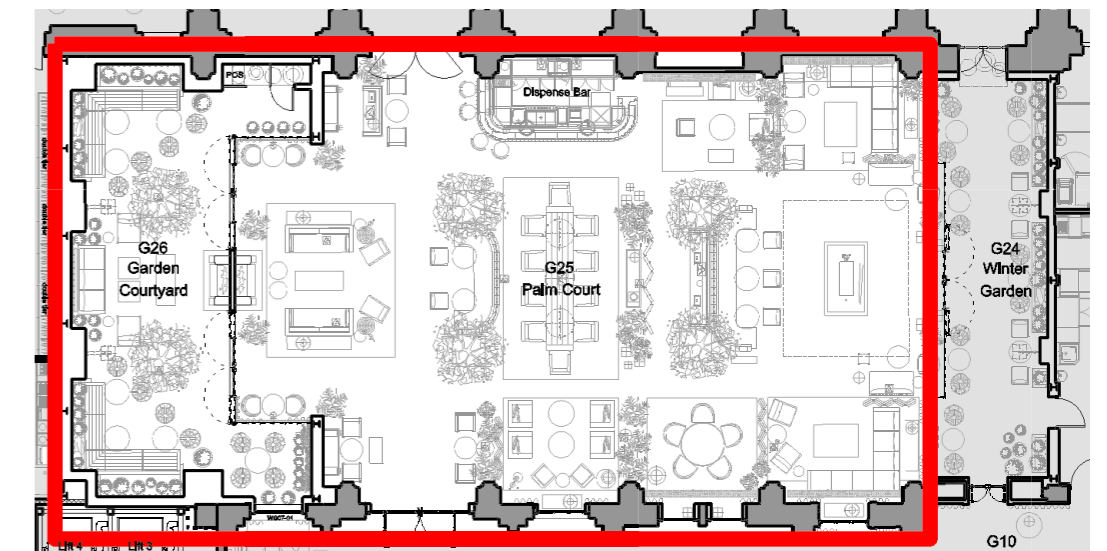
The space no longer connected directly with many of the adjacent public spaces and was under-used by the hotel as a secondary function space. Instead of providing life & vitality into the heart of the building, it was generally an out-dated, unwelcoming, 'dead' space.

3.4 Consented Palm Court

Tara Bernerd & Partners consented scheme for the existing Woburn Suite aims to reinvigorate this central area, restore the concept of a 'Palm Court' and reconnect this space with the surrounding public areas.



Photos of Existing Woburn Suite - prior to strip out



Consented Palm Court Plan Layout - area included within this application outlined in red

4.0 - Hotel Russell

Proposals

4.4 Proposed Palm Court
- amendments included within this application

The original Tara Bernerd & Partners consented interior concept, key finishes and strip out remains unchanged.

Changes are as follows:

- central area lowered to allow original stepped access down from lobby and banqueting hall into a 'sunken' palm court area
- new limestone steps, planters and brass handrails/balustrades to accommodate lower area with retained level access to banqueting hall and garden courtyard
- minimal and discreet platform lift for accessibility to lower area
- reconfigured furniture layout to suit

Current proposed wall finishes are extended to accommodate the lower floor.

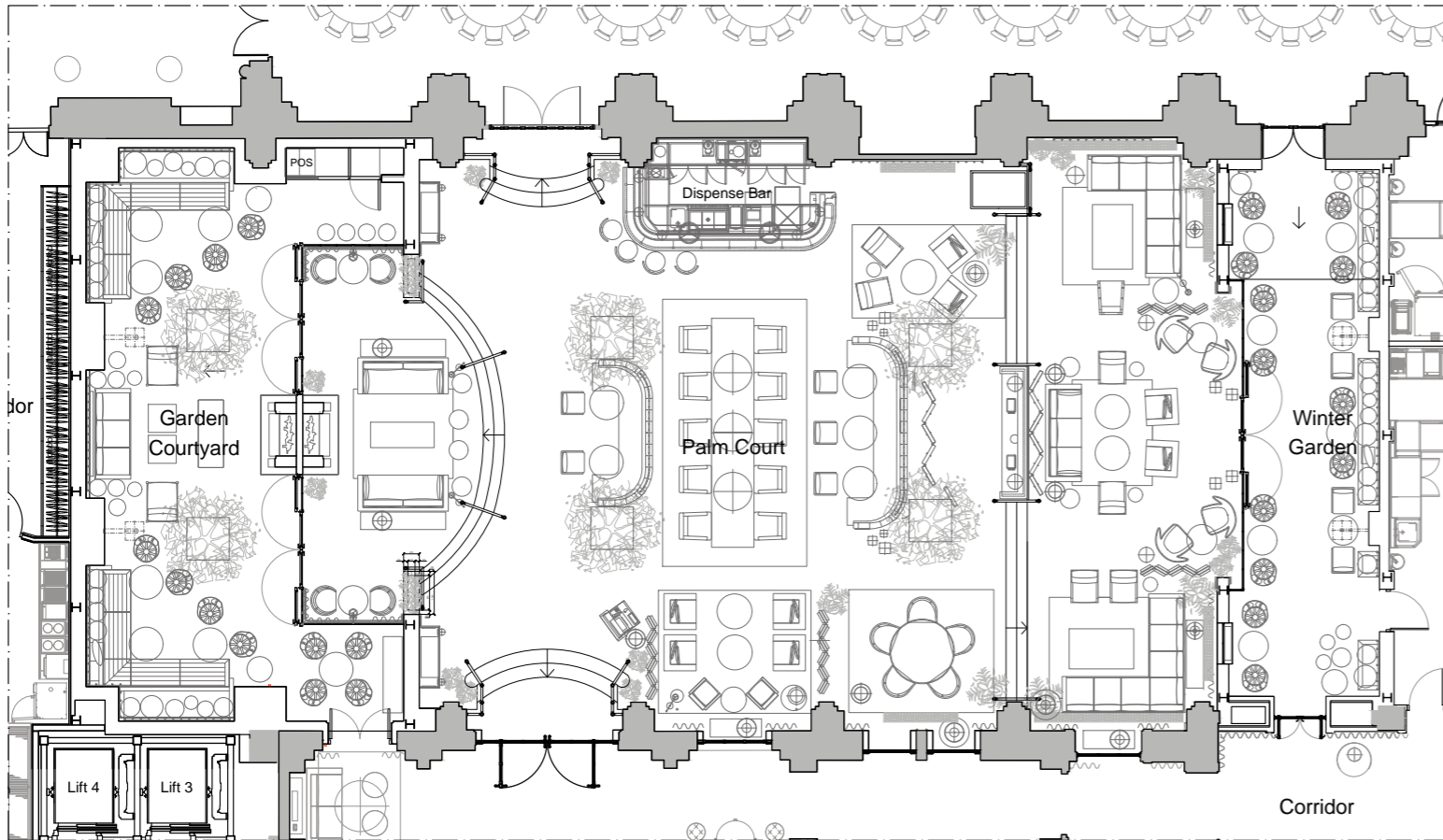
4.5 Proposed Garden Courtyard (& Lobby)
- amendments included within this application

The original Tara Bernerd & Partners consented design concept, key finishes and strip out remains unchanged

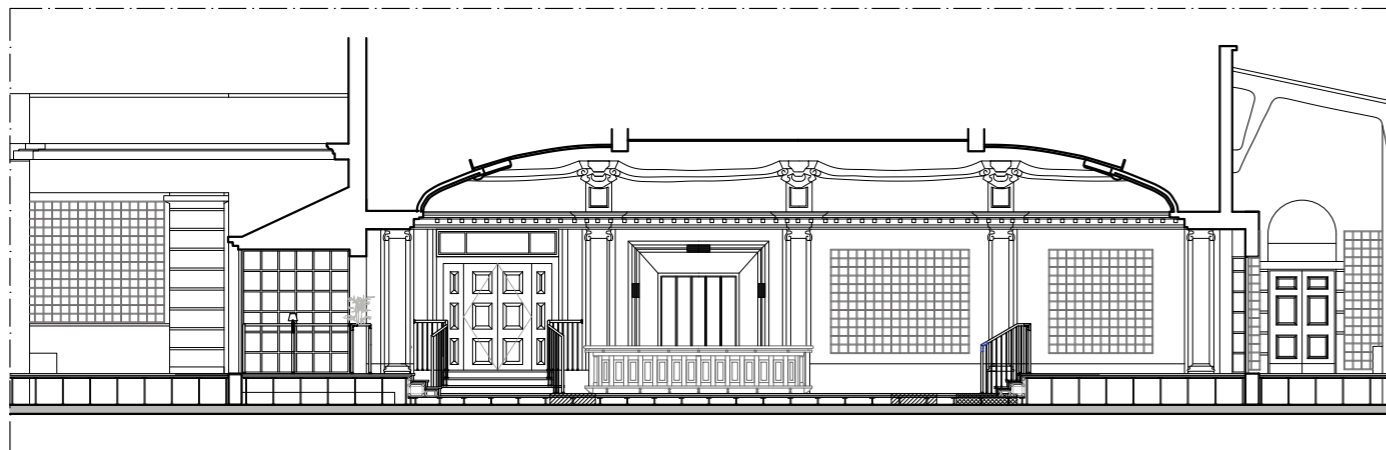
Changes are as follows:

- window from lobby area changed to power operated door to provide level access into Garden Courtyard

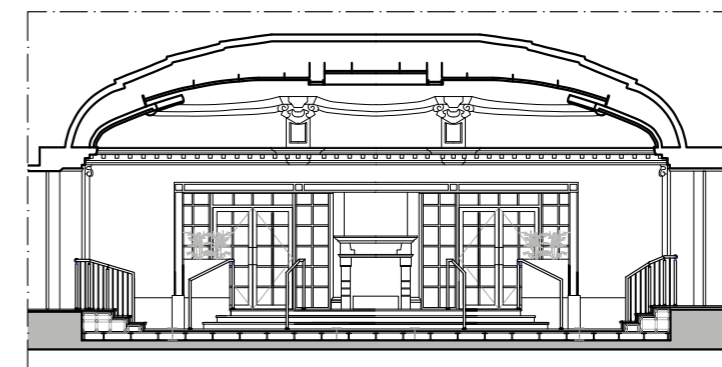
The new doors are in bronze finish in keeping with the existing consented doors and screens to palm court and winter garden.



Proposed Layout (Box Architects)
 Garden Courtyard, Palm Court & Winter Garden



Proposed Elevation Palm Court (Box Architects)
 showing dispense bar and access to banqueting hall



Proposed Elevation Palm Court (Box Architects)
 showing entrance to garden courtyard from Palm Court

5.0 - Hotel Russell

Drawing Schedule

5.0 Drawing Schedule

	Submitted for Application	Drawing Reference
1	<i>Site Plan</i>	10089-T-01-0101-ZXX-02
2	<i>Existing, consented and proposed plans</i>	(03)01_Planning Application Plan
3	<i>Existing, consented and proposed elevations Palm Court</i>	(03)02_Planning Application_Elev
4	<i>Existing, consented and proposed elevation Lobby</i>	(03)03 Planning App Elevs – Lobby
5	<i>Proposed Plan</i>	(21)01_D_Proposed Palm Court Floor Plan
6	<i>Proposed Elevations</i>	(21)02_C_Proposed Palm Court Sections
7	<i>Details:</i>	
	<i>new steps & handrails & lift</i>	(34)01 Proposed Balustrade/Stair (34)02 Proposed Balustrade/Stair (34)03 Proposed Balustrade/Stair 0143-SK-110_MT501 DDA Buttons
	<i>new door between lobby & garden courtyard platform lift</i>	(32)01_B_Proposed new door (MT-501) PR3 Step Lift Tech Sheet
8	<i>Proposed Floor Finishes</i>	(43)01_C_Proposed floor finish_Setting out l.pdf
9	<i>D&A Statement</i>	