

This drawing is for engineering services only and is to be read in conjunction with all relevant architectural, structural, Waterman Building Services drawings and the contract specification.

THIS IS NOT AN INSTALLATION DRAWING

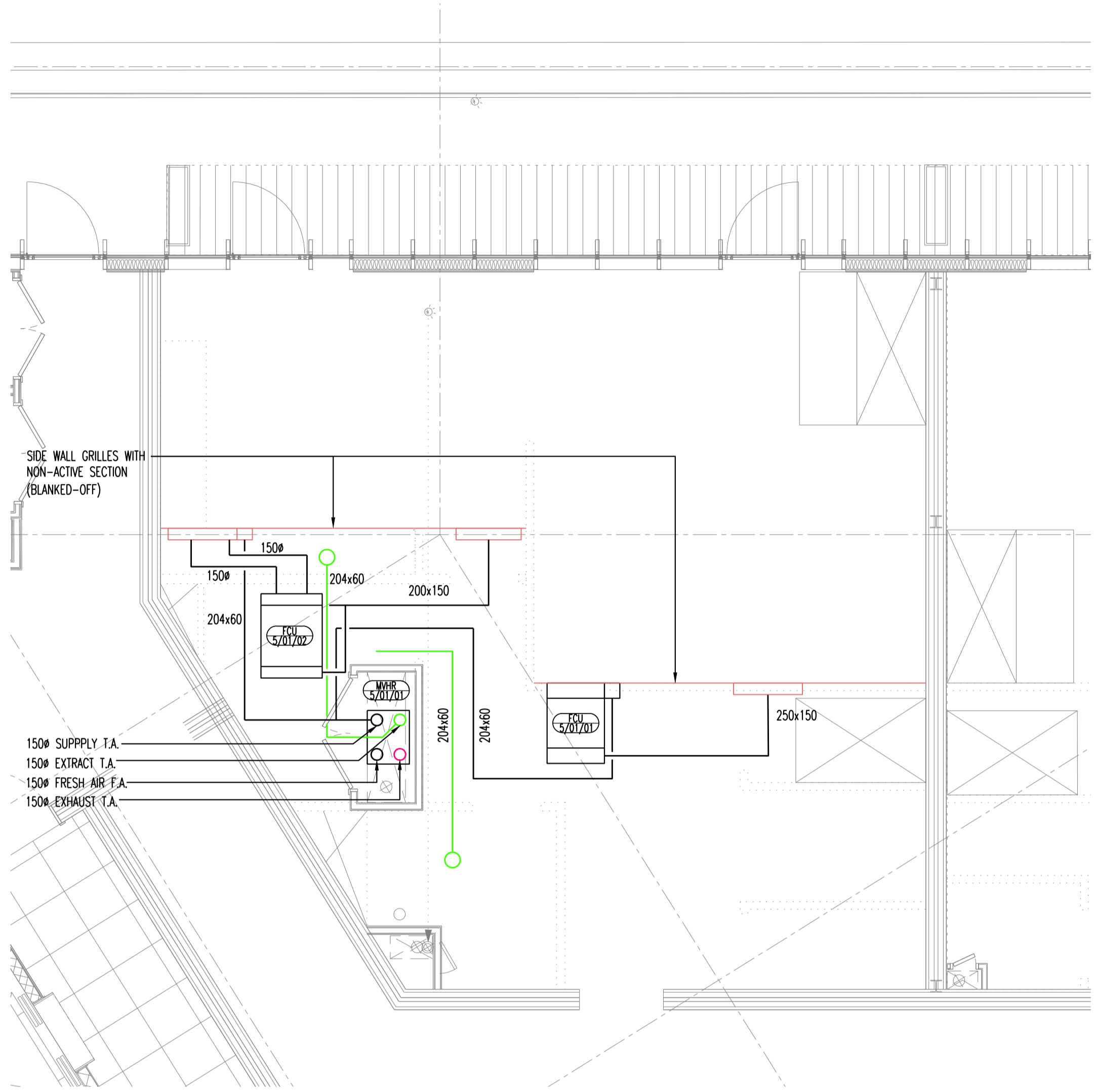
All service routes and equipment locations are indicative, actual location to be determined from site dimensions.

To whom it may concern. The requirements of the Health & Safety at Work etc. Act 1974 & subsequent amendments thereto are brought to the attention of all those who design, install or maintain the plant and equipment shown on these drawings or who are required to enter the areas shown on these drawings.

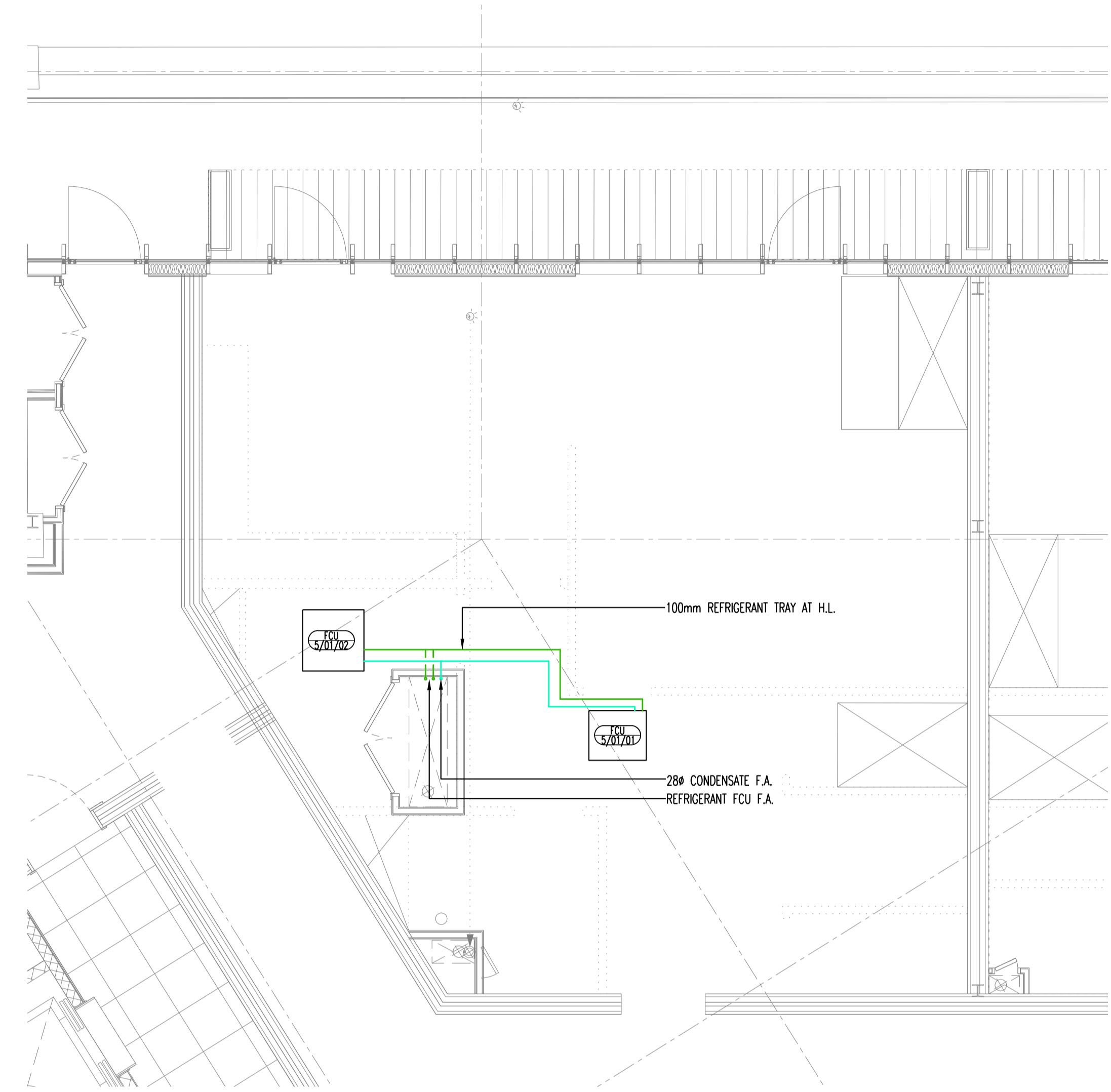
DO NOT SCALE FROM THIS DRAWING

**GENERAL NOTES**

- VCD's TO ALL FCU'S ARE TO BE ACCESSED VIA ACCESSIBLE / DE-MOUNTABLE GRILLAGE
- WHERE FLEXIBLE DUCTWORK IS TO BE USED NO MORE THAN 500mm TO BE USED IN ANY LENGTH.
- ALL DUCTWORK TO BE HARD MOUNTED TO SLAB UNLESS OTHERWISE STATED.
- MWR TO BE MOUNTED IN AN ACOUSTIC ENCLOSURE, PLEASE REVIEW ACOUSTIC ENGINEER'S REPORT FOR DETAILS.
- RETURN AIR PATH IS VIA UNDERCUT DOORS FOR BATHROOMS
- MWR TO INCORPORATE HUMIDITY SENSOR, PIR SENSOR/SWITCH AND BOOST BUTTON TO ACTIVATE "BOOST MODE"
- LOCATION OF BOOST BUTTON TO BE AGREED WITH THE ARCHITECT.
- REFRIGERANT TRAY TO BE MOUNTED HARD TO SLAB. REFRIGERANT TO RUN IN TRAY UNTIL CONNECTION TO FCU.
- ALL DIMENSIONS ON THIS DRAWING ARE TO BE DENOTED IN MILLIMETRES.
- THIS DRAWING SHALL BE READ IN CONJUNCTION WITH ALL OTHER CONTRACT DRAWINGS AND DOCUMENTS
- THIS DRAWING MAY NOT CONTAIN ALL DETAILS OF ALL SYSTEMS, MATERIALS AND ANGLIARY ITEMS ETC. SHOWING ON THIS DRAWING NECESSARY TO DESCRIBE A COMPLETE INSTALLATION. PROVIDE ALL DETAILS OFF ALL SYSTEMS, MATERIALS, AND OTHER ITEMS ETC. NECESSARY TO PROVE, INSTALL, COMMISSION AND SET TO WORK A COMPLETE INSTALLATION THAT MEETS THE SPECIFIED DESIGN CRITERIA AND CAN BE MAINTAINED IN ACCORDANCE WITH THE DEFINED STANDARDS OF GOOD INDUSTRY PRACTICE AND MANUFACTURER'S RECOMMENDATIONS AND INSTRUCTIONS.
- ALL IDENTIFIED CONFLICTS BETWEEN THIS DRAWING AND OTHER DRAWINGS AND SPECIFICATIONS ARE TO BE BROUGHT TO THE ATTENTION OF THE DESIGN TEAM FOR CLARIFICATION AND RESOLUTION.
- ALL IDENTIFIED ANOMALIES THAT EXIST ON THIS DRAWING ARE TO BE BROUGHT TO THE ATTENTION OF THE ENGINEER FOR CLARIFICATION AND RESOLUTION.
- THE CONTENT OF THIS DRAWING IS INTENDED TO COMMUNICATE THE DESIGN INTENT OF THE BUILDING SERVICE SYSTEM(S) SHOWN ON THIS DRAWING.
- THIS DRAWING IS REFERRED TO THE MECHANICAL SERVICE SPECIFICATION FOR INSTRUCTION OF APPLICATION OF ALL CONTRACTOR DESIGN (WHEN REQUIRED) AND INSTALLATION STANDARDS, REGULATIONS, CODES OF PRACTICE, ETC.
- LOCAL - IN COUNTRY STANDARDS, REGULATIONS, CODES OF PRACTICE AND BY-LAWS MAY TAKE PRECEDENCE OVER ANY STATED OR SPECIFIED REQUIREMENTS. THE CONTRACTOR SHALL BRING SUCH CONFLICTS AND ANOMALIES TO THE ATTENTION OF THE ENGINEER FOR CLARIFICATION AND RESOLUTION.
- ALL SERVICE ROUTES, EQUIPMENT AND PLANT LOCATIONS AND MAINTENANCE SPACE SHOWN ON THIS DRAWING ARE INDICATIVE AND FOR INFORMATION ONLY. THE FABRICATION WORKING OF INSTALLATION DRAWINGS SHALL DEFINE ALL REQUIRED SERVICE ROUTES, EQUIPMENT, PLANT LOCATION AND MAINTENANCE SPACE IN ACCORDANCE WITH THE DEFINED STANDARDS, GOOD INDUSTRY PRACTICE AND MANUFACTURER'S RECOMMENDATION AND INSTRUCTION.
- THIS DRAWING IS NOT A CONSTRUCTION DRAWING. FABRICATION, WORKING OR INSTALLATION DRAWING. THE CONTRACTOR IS REFERRED TO THE MECHANICAL SERVICES SPECIFICATION FOR INSTRUCTION ON THE PREPARATION AND CO-ORDINATION OF CONSTRUCTION, FABRICATION, WORKING OR INSTALLATION DRAWINGS.
- ALL PENETRATION THROUGH FLOOR SLABS, COLLUMS, BEAMS, BRANCHING AND LOAD BEARING WALLS ARE TO BE AGREED WITH THE STRUCTURAL ENGINEER PRIOR TO THE FORMATION OF SAID PENETRATION.
- EACH DWELLING WILL BE PROVIDED WITH A CENTRAL (MAIN) CONTROLLER LOCATED WITHIN THE MEP CURSORED. THE CENTRAL CONTROLLER WILL ALLOW TIME CONTROL AND TEMPERATURE ADJUSTMENT OF ALL INTERNAL FAN COIL UNITS.
- LOCALISED SIMPLIFIED WALL MOUNTED ROOM THERMOSTAT/CONTROLLERS WITHIN EACH AREA/ROOM SERVED WITH COMFORT COOLING/ HEATING WILL PROVIDE THE FACILITY OF LOCAL CONTROL INCLUDING ON/OFF, TEMPERATURE & FAN SPEED ADJUSTMENT. THE CONTROLS WILL BE INTERLOCKED WITH THE DWELLING UNDERFLOOR HEATING SYSTEM, TO PREVENT BOTH THE HEATING AND COOLING SYSTEMS BEING OPERATED SIMULTANEOUSLY.
- THE MWR AND EACH FAN COIL UNIT SHALL BE PROVIDED WITH THE CONDENSATE DRAINAGE DISCHARGING TO A LOCAL SFP VIA A SELF-SEALING WASTE TRAP.
- BATHROOM LIGHT SWITCH TRIGGER MWR BOOST MODE.
- WALL MOUNTED BOOST SWITCH WITHIN KITCHEN FOR MWR BOOST FOR KITCHEN.
- NON-ACTIVE SECTION OF LINEAR BAR GRILLES TO BE COMPLETED WITH BLANKING PLATES PAINTED BLACK.
- SUPPLY AND EXTRACT DUCTWORK TO BE INSULATED.
- REFRIGERANT PIPEWORK TO BE INSULATED WITH HIGH SPEC ARMATEX INSULATION.
- LEAK DETECTION SYSTEM TO BE COMPLIANT WITH BS578. THE PROVISION OF LEAK DETECTION DEVICES TO BE IN ACCORDANCE WITH MANUFACTURER'S RECOMMENDATION AND INSTRUCTION.
- KITCHEN EXTRACT RETURN AIR GRILLE TO BE LOCATED WITHIN 1000mm OF THE COOKER.
- ALL CONNECTIONS OFF THE MWR UNITS TO INCORPORATE SWEEPY CURVES.



VENTILATION LAYOUT



PIPEWORK LAYOUT

Rev	Date	Description	By
C01	23.06.15	STAGE 4 ISSUE	D.R

Amendments			
Project	HERBAL HOUSE		
Title	MECHANICAL SERVICES LAYOUT FIFTH FLOOR UNIT 1		
Client	ALLIED LONDON		

Pickfords Wharf Clink Street London SE1 9DG  
t 020 7928 7888 f 020 7928 3033  
mail@waterman-group.co.uk www.watermangroup.com

Drawing Status				
<b>STAGE 4</b>				
Designed by	A.S.	Checked by	A.S.	Project No
Drawn by	J.L.	Date	JUNE '15	BSD11210
Scales @ A1			1:50	Computer File No
work to figured dimensions only				
Publisher	Zone	Category	Number	Revision
WBS	50	05	M250	C01

M:\CAD\BS11210\HerbalHouse ECT1  
File Path: BSD11210\_WBS-05-M250.dwg