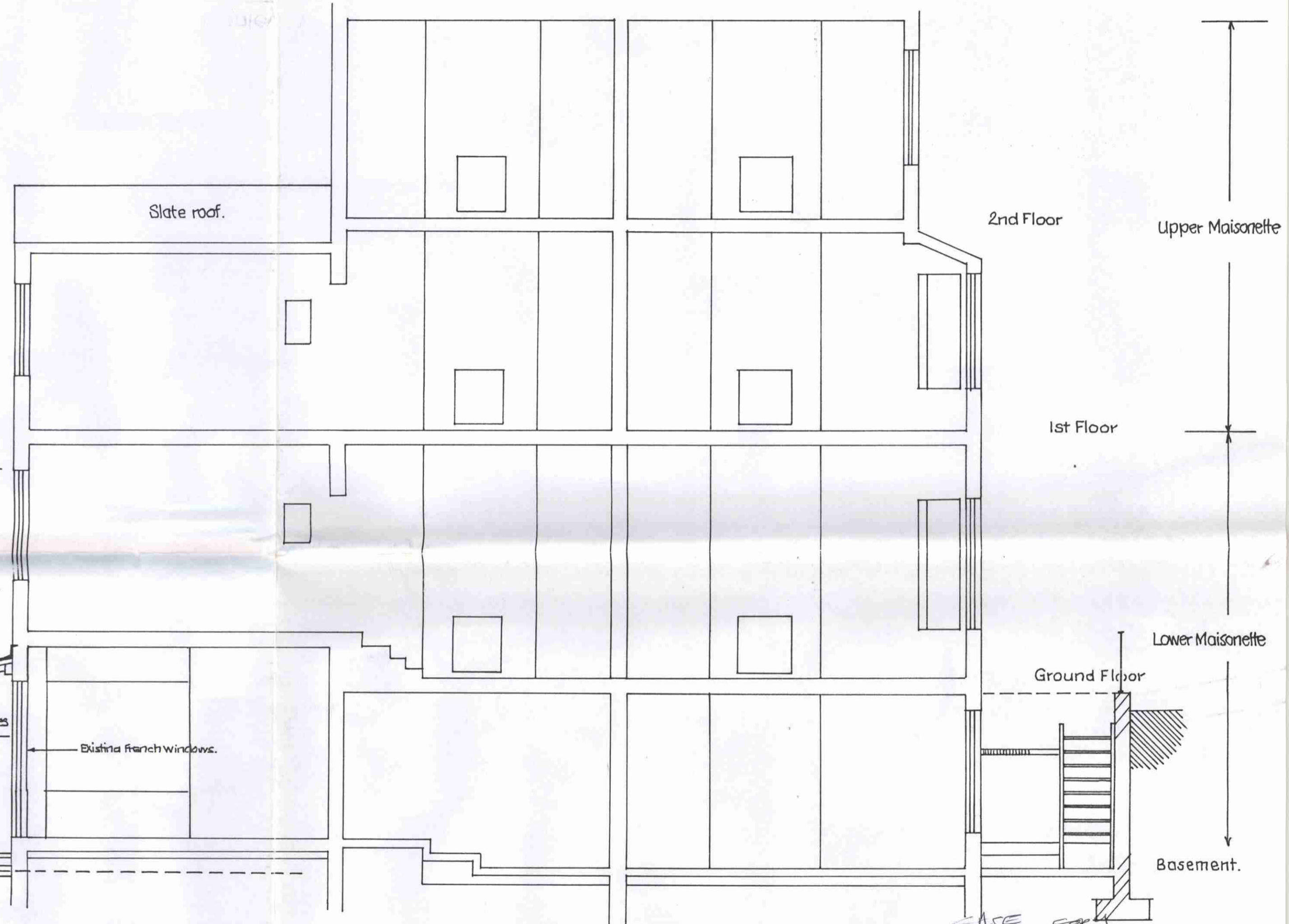
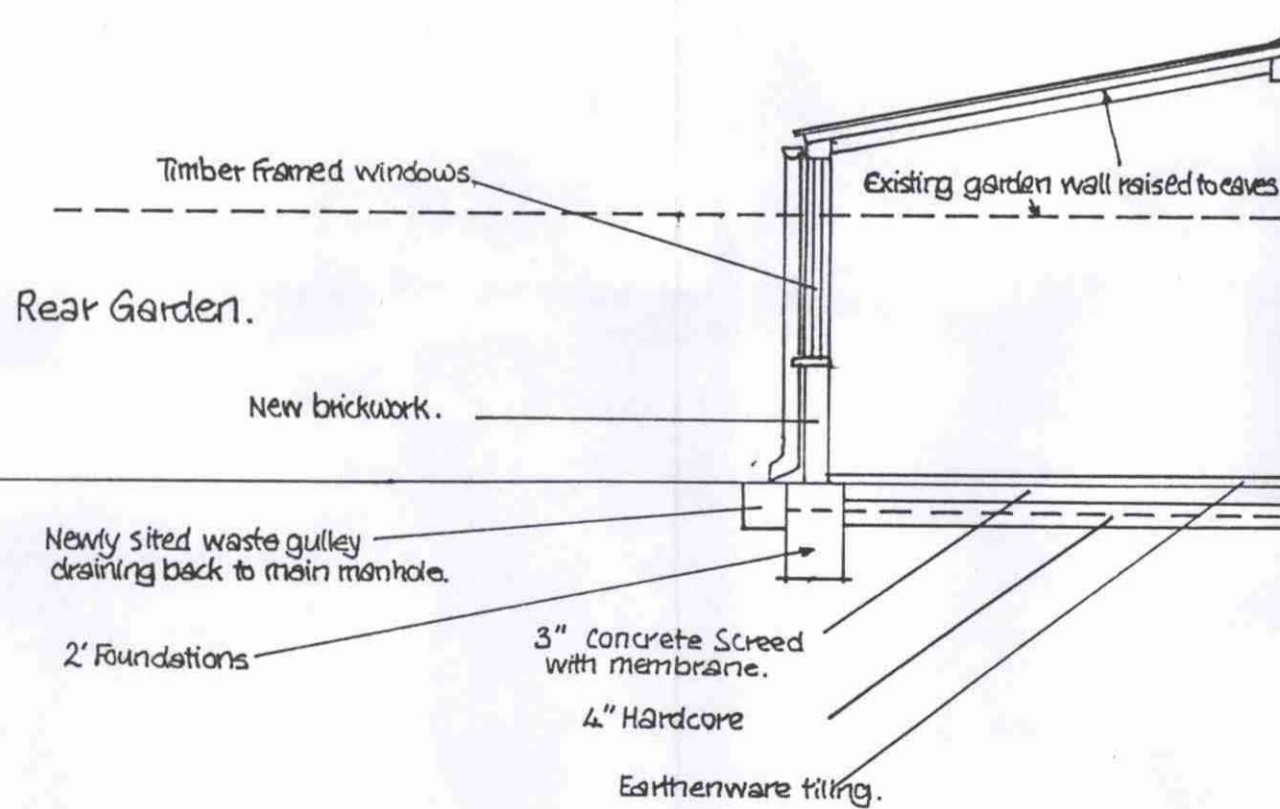


Side elevation showing new structure from No 68 Burghley Road.



Scale $\frac{1}{4}$ " to 1 foot. Reference 70BR1.

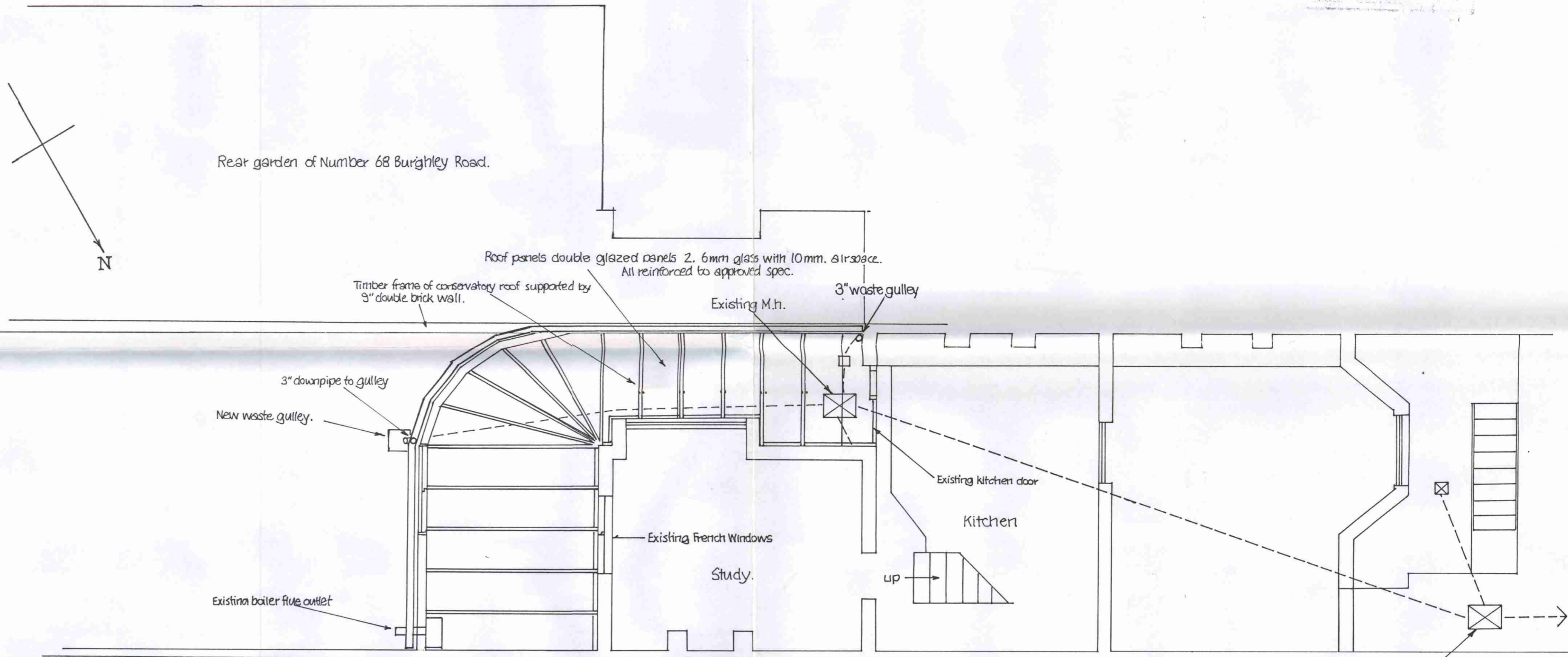
TP9300893

LONDON BOROUGH OF CAMDEN
TOWN AND COUNTRY PLANNING ACTS
24 SEP 1993
PLANS APPROVED
ON BEHALF OF THE COUNCIL

70 Burghley Road. NW5 Side elevation showing proposed conservatory.

20.7.93.

© Mike Chapman
Puntella Gee.



Scale 1/4" to 1 foot Ref. 70 BR 2

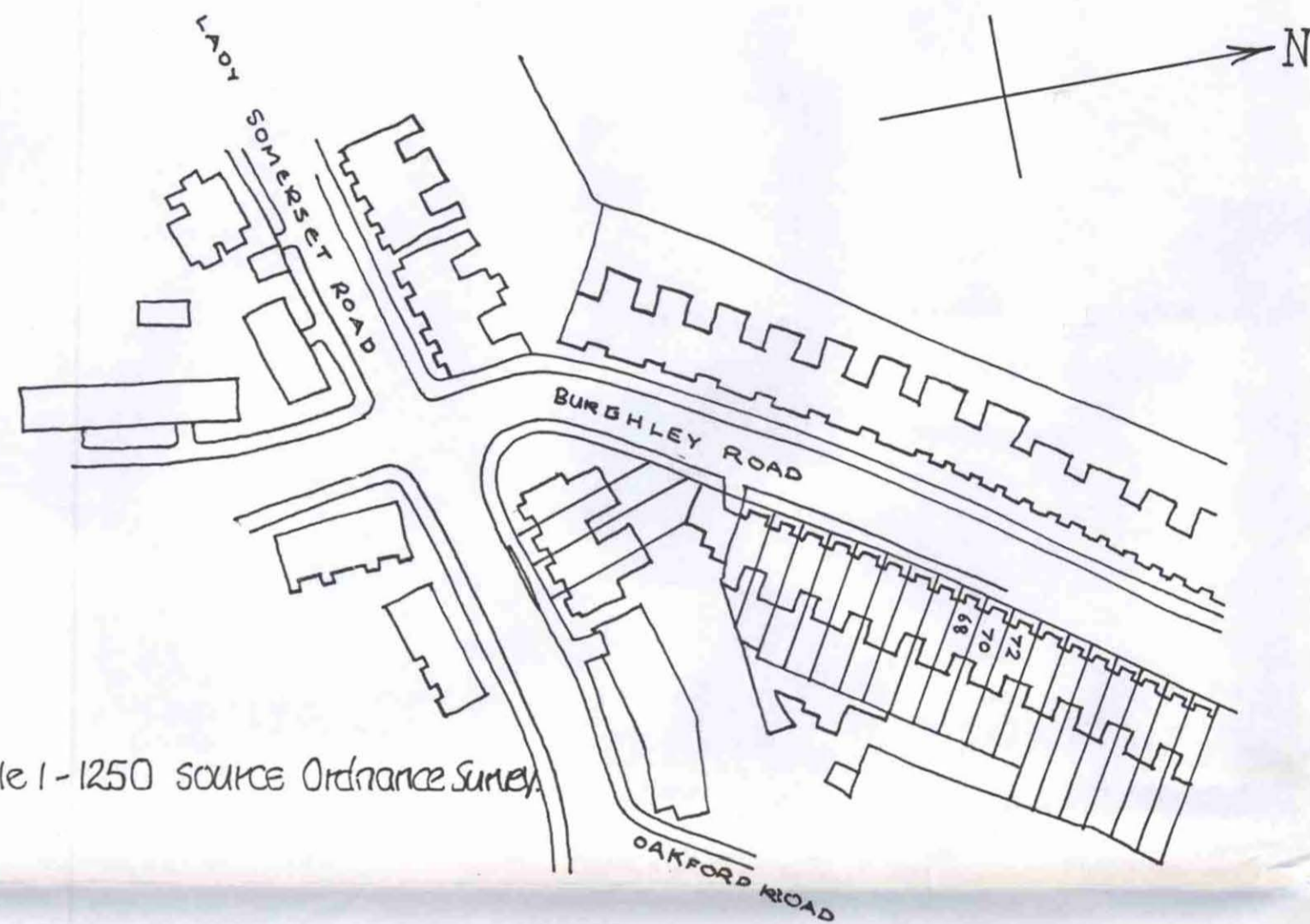
TP9300893

70 Burghley Road. NW5 Plan of basement showing proposed conservatory.

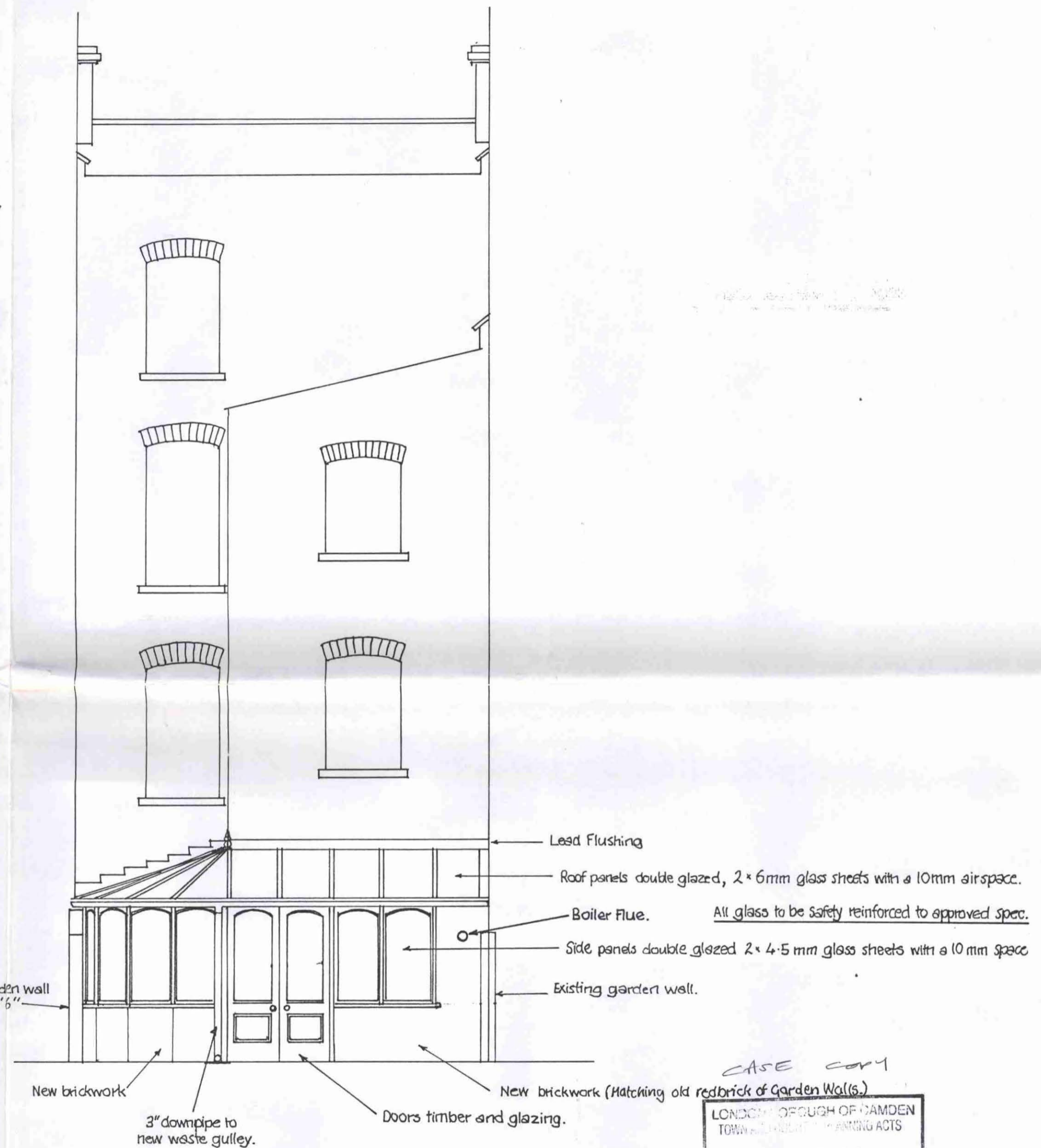
CASE of Existing M.h.
 LONDON BOROUGH OF CAMDEN
 TOWN AND COUNTRY PLANNING ACTS
 24 SEP 1993
 PLANS APPROVED
 ON BEHALF OF THE COUNCIL

20.7.93.

© Mike Chapman
 Prunella Gee



Scale 1-1250 source Ordnance Survey



Scale 1/4" = 1 foot.

Ref. 1770 BR3

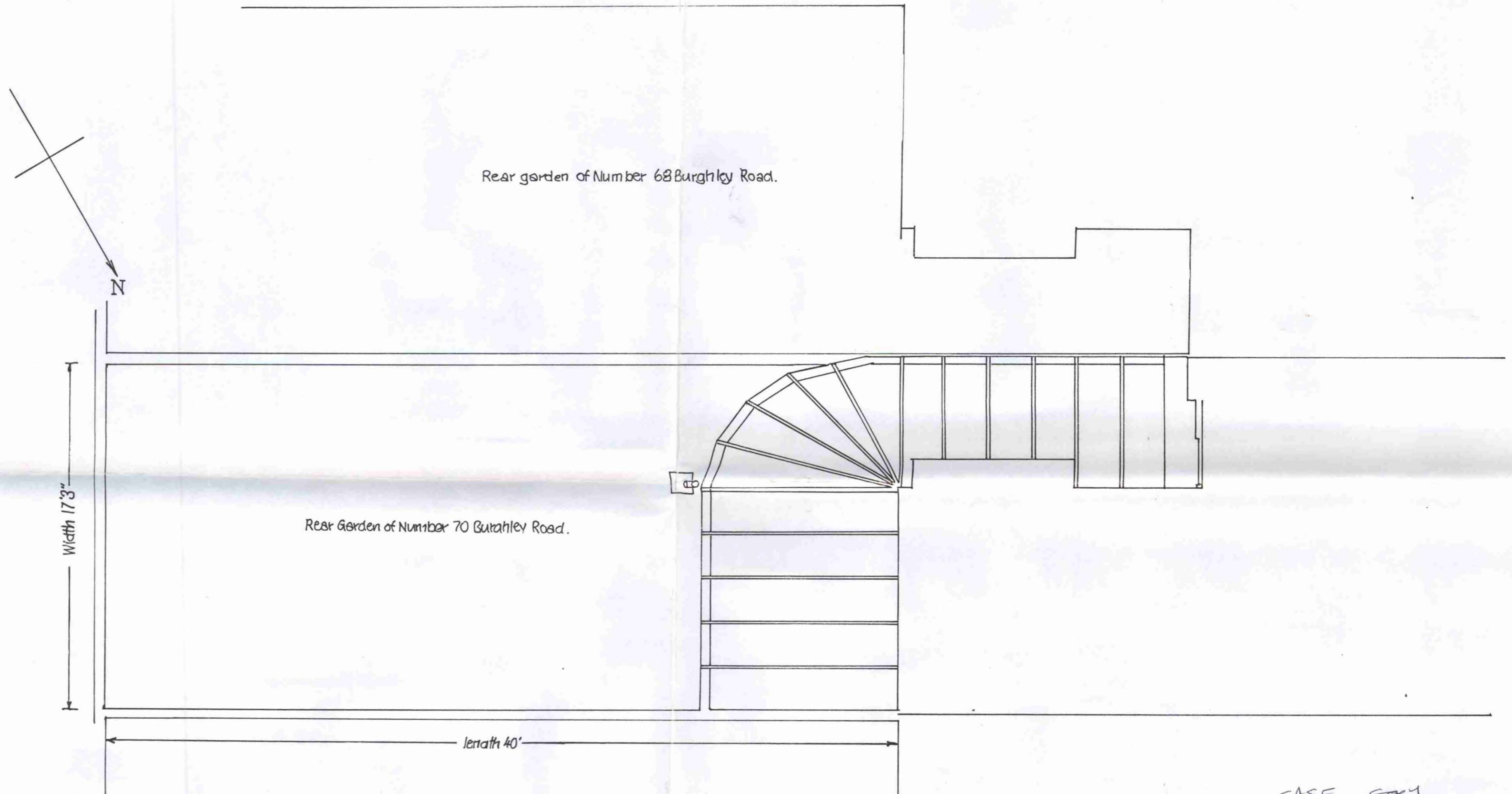
TP9300893

70 Burghley Road. NW5 Rear elevation showing proposed conservatory.

20.7.93.

CASE COPY
 LONDON BOROUGH OF CAMDEN
 TOWN AND COUNCIL PLANNING ACTS
 24 SEP 1993
 PLANS APPROVED
 ON BEHALF OF THE COUNCIL

© Mike Chapman
 Prunella Gee



Rear asrden of Number 70 Burghley Road.

Scale $\frac{1}{2}$ " to 1 foot. Ref. 70BR4.

TP9300893

70 Burghley Road, NW5 Garden plan showing proposed conservatory.

CASE 204
 LONDON TOWN AND COUNCIL ACTS
 24 SEP 1993
 PLANS APPROVED
 ON BEHALF OF THE COUNCIL

20.7.93.

© Mike Chapman
 Prunella Gee