

GENERAL NOTES:  
 All dimensions to be checked on site prior to commencement of any works, and/or preparation of any shop drawings.  
 Sizes of and dimensions to any structural elements are indicative only. See structural engineers drawings for actual sizes / dimensions.  
 Sizes of and dimensions to any service elements are indicative only. See service engineers drawings for actual sizes and dimensions.  
 This drawing to be read in conjunction with all relevant Architect's drawings, specifications and other Consultants' information.

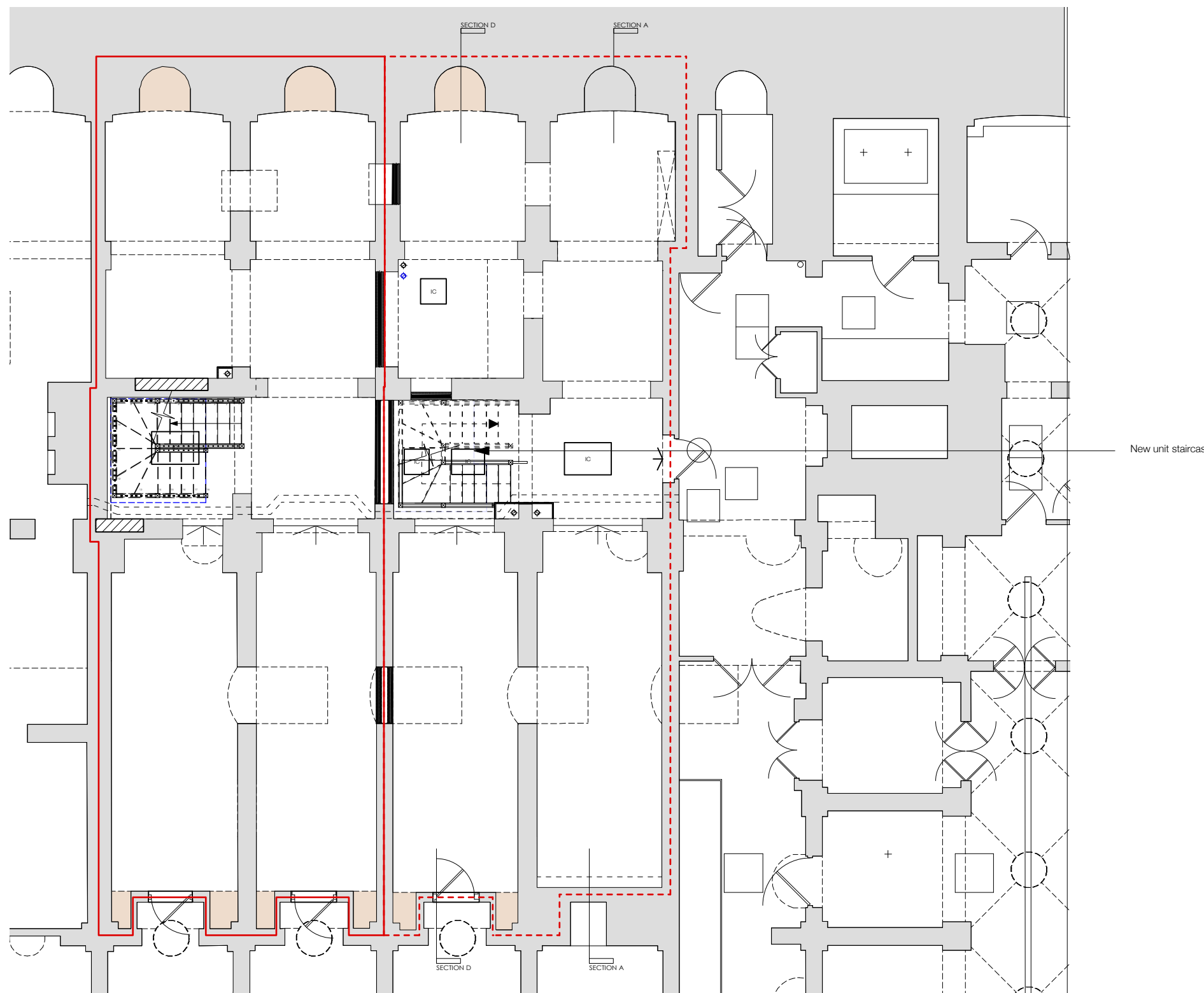
DO NOT SCALE FROM THIS DRAWING.

KEY:

- UNIT 6 DEMISE
- UNIT 6a DEMISE
- EXISTING STRUCTURE
- FABRIC REMOVAL

NOTES:

1. All dimensions for trimming the joists are to be checked on site
2. Shown existing pipework has not been surveyed and is based on visual inspection only thus is indicative only
3. Allow to make good to areas where fabric has been removed
4. STAIRCASES ARE SHOWN INDICATIVELY. FOR PRECISE DIMENSIONS AND SETTING OUT REFER TO SUBCONTRACTORS DRAWINGS



X1	Record drawing	04.09.15	RP
X	PRELIMINARY RECORD DRAWING	28.08.15	RP
revision	description	date	initials
project no.	drawing no.	rev	
<b>1653</b>	<b>(02)003A</b>	<b>X1</b>	
drawing	Proposed Plan	scale	1:100 @ A3 1:50 @ A1
	Basement	date	10.10.14
		drawn	RP
project	Unit 6-6A	checked	
	Covent Garden Market Building	printed	
client	Capital & Counties		

paul davis + partners  
 architects urban designers

178 ebury street london SW1W 0LP t +44(0)20 7730 1178 f +44(0)845 280 5071 info@pauldavisandpartners.com

1:100 @ A3 X1  
 02/003A  
 1653