

# LEGEND

## PAVING

- P1 - Granite setts - 300x150mm - beige - rigid construction. Staggered bond.
- P2 - Granite setts - 100x100mm - silver grey - rigid construction. Staggered bond.
- P3 - Temporary tarmac finish only required if phase of works with Camden works to surrounding streets requires

## KERBS + EDGES

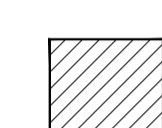
- E1 - Aluminium edge

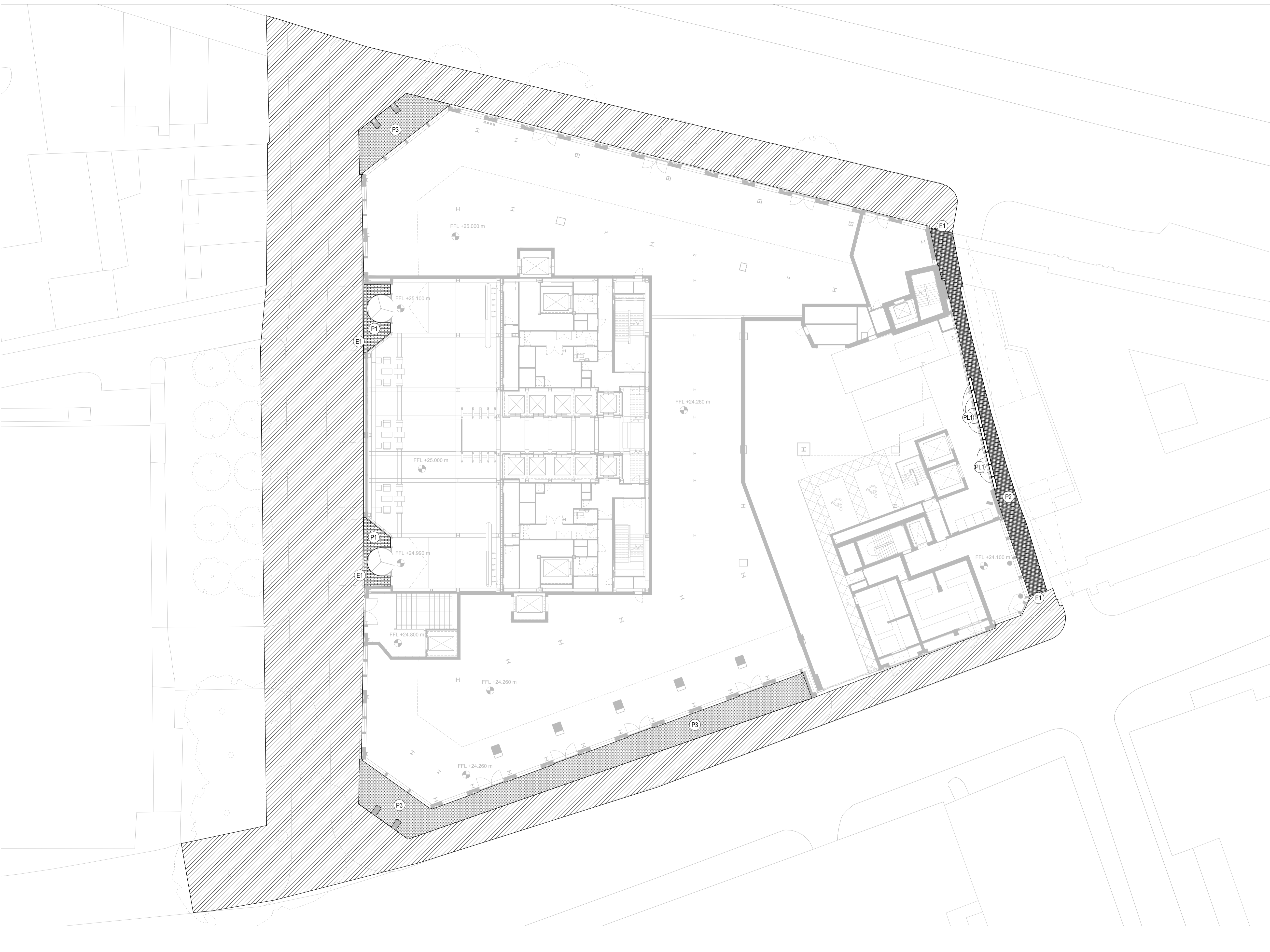
## FURNITURE

- PL1 - Linear steel planter 300mm width by 1m deep. drainage board to base, 450mm thick subsoil, 400mm topsoil.

## Planting

- Climbers - *Trachelospermum jasminoides* Pre-grown min, 1.5m height, 500mm spacing.
- Underplanting - *Chasmanthium latifolium* 5L pot 300mm spacing

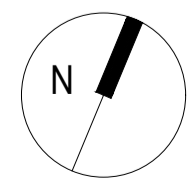
-  Area of public realm to be implemented by Camden. Contractor required to coordinate with Camden on timings and detail



rev	details	by	date
P01	Draft Employer's requirements	NM	14.10.2016
P02	ER Issue	NM	28.10.2016

**Notes**

- 1.0 Do not scale from drawing, use figured dimensions only
- 1.1 All dimensions to be checked onsite
- 1.2 This drawing to be read in conjunction with all other Gillespies drawings and specifications



Ordnance Information shown is reproduced from Ordnance Survey material with the permission of Ordnance Survey on behalf of the Controller of Her Majesty's Stationary Office @ Crown Copyright. Unauthorised reproduction infringes Crown Copyright and may lead to prosecution or civil proceedings. License No. 1000 17362

Project title  
**THE POST BUILDING**

Drawing title  
**Public Realm GA**

Drawing number  
**TBP-GIL-ZZZ-00-GA-L-94-0100**

Drawing Status  
**PRELIMINARY**

Date  
14.10.2016

Scale  
1:200 @ A1

Revision  
**P02**

Drawn  
NM

Checked  
NM

Client  
Brockton / Oxford



1 St John's Square, London EC1M 4BH  
P: 020 7533 2029 F: 020 7533 3990 E: design@gilspies.co.uk