

A HEAD DETAIL

60 min AIM VRB plus cavity barrier (or equal approved) fixed in accordance with manufacturers recommendations

Wall ties within 300mm of angle support

Cavity tray DPC dressed over brickwork support, Small profile weephole, Rytweep or similar approved

Brickwork to be supported via Ancon or similar MDC support system Ref: MDC/265/8.1/P115 on cast in 30/20 channel (TBC by Ancon/SE). Refer to SE drawings for locations. Brackets to be connected to slab through thermal isolator pads as Ancon recommendations.

Thermabate cavity closer 1/2 hr fire resistance, fitted in accordance with manufacturers instructions

PPC steel plate (colour to match windows) welded to u/s of brick support angle/brackets.

Arbosil 1096 silicone sealant from Adthead Ratcliffe or similar approved applied as manufacturers recommendations between plate and frame (including backing strip as necessary)

Compriband 600 impregnated foam tape

Stainless steel angle for window support if required by window supplier

PPC aluminium cill with 5mm upstand at jamb edges. Fixed to frame (fixings to be agreed)

Thermabate cavity closer 1/2 hr fire resistance, fitted in accordance with manufacturers instructions

Wall ties with insulation retaining disks to Structural Engineer details

B CILL DETAIL

EWT 02 - REF TO: 1213_WD_401

Ancon mitred and welded brick support to reveal as Ancon detail (non standard plate).

30mm Roclose cavity closer fitted in accordance with manufacturers recommendations

Arbosil 1096 silicone sealant from Adthead Ratcliffe or similar approved applied as manufacturers recommendations (including backing strip as necessary)

Velfac 200 composite window or similar approved, fixed back to LGS frame to suppliers detail.

C JAMB DETAIL

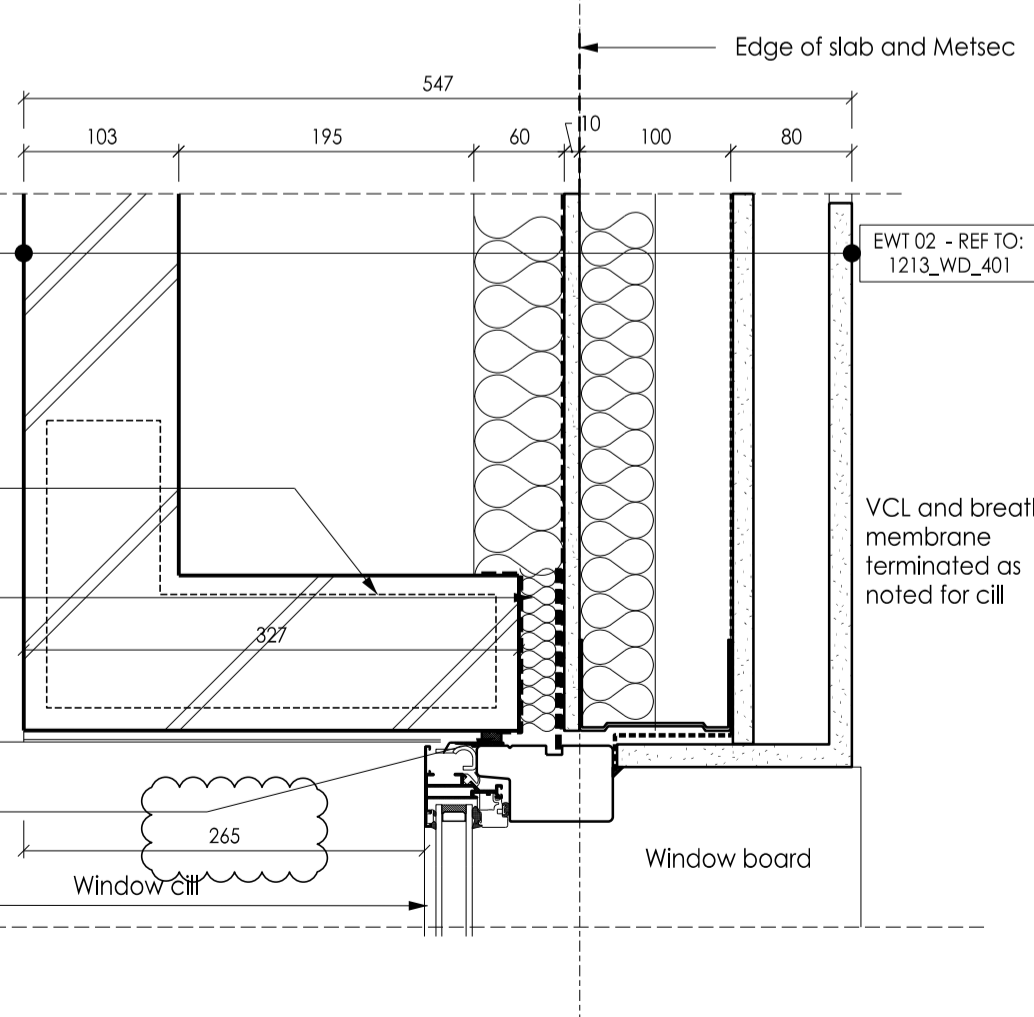
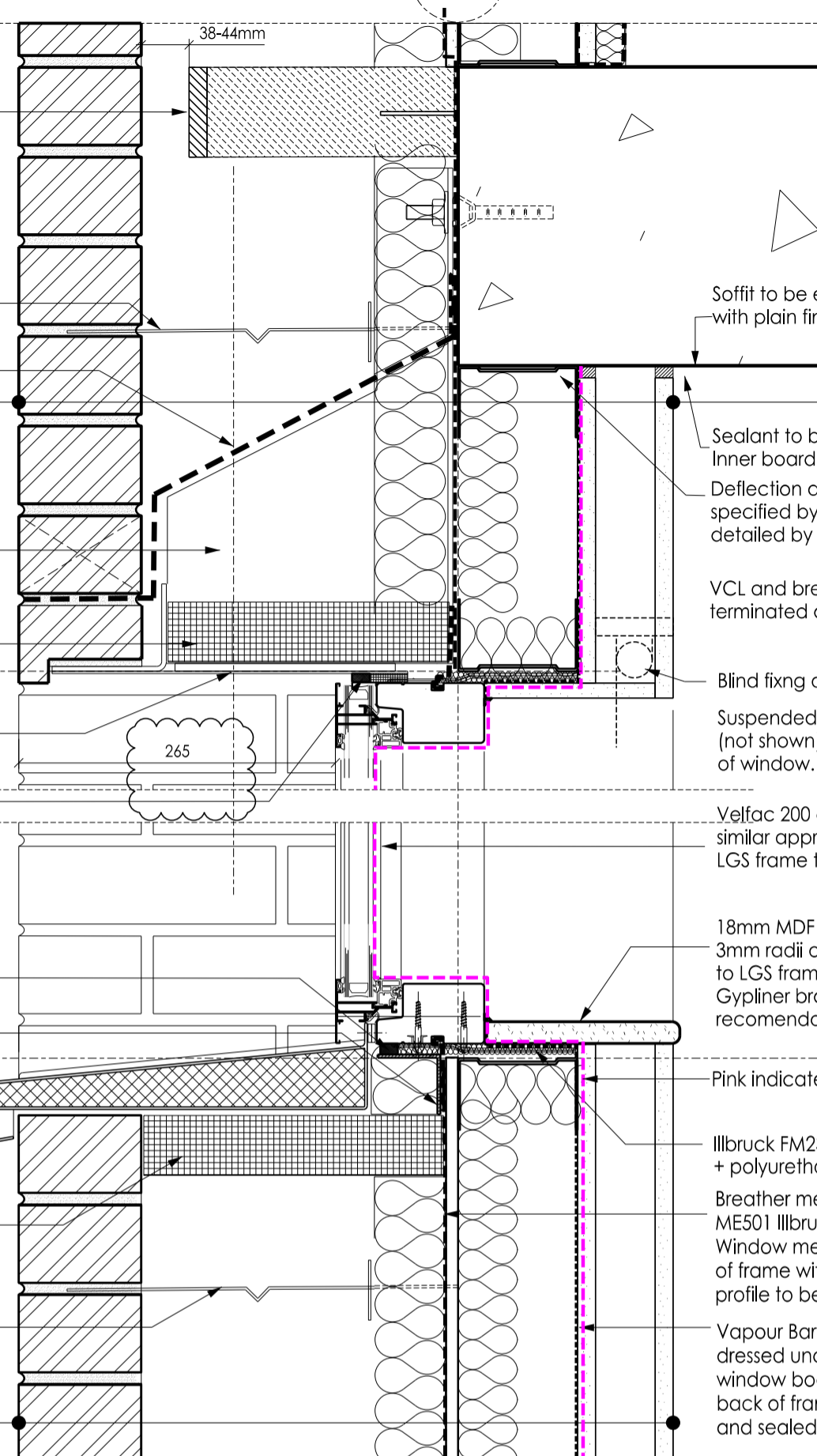
GRID

GENERAL NOTES

DO NOT SCALE FROM THIS DRAWING. FIGURED DIMENSIONS ARE TAKEN TO STRUCTURE UNLESS INDICATED OTHERWISE. ALL DIMENSIONS TO BE CHECKED ON SITE PRIOR TO COMMENCEMENT OF WORK. DRAWING TO BE READ IN CONJUNCTION WITH ALL OTHER ARCHITECTS DRAWINGS, CONSULTANTS AND SPECIALISTS DRAWINGS, CONSTRUCTION NOTES, SPECIFICATIONS AND EMPLOYER'S REQUIREMENTS WHERE APPLICABLE. ANY DISCREPANCY MUST BE BROUGHT TO THE ATTENTION OF PCKO. IF IN DOUBT, ASK. ANY MODIFICATION TO THIS DRAWING MUST BE CARRIED OUT BY PCKO. THIS DRAWING REMAINS UNDER THE COPYRIGHT OF PCKO ARCHITECTS LIMITED. PLEASE OBTAIN PERMISSION BEFORE COPYING. WHERE METHOD OF CONSTRUCTION INCORPORATES TIMBER/LIGHT GAUGE STEEL FRAME ALL ELEMENTS OF FRAME INCLUDING STUD LOCATIONS, NOGGINS, SHEATHING, UNTELS, TRUSSESS AND WIND BRACING TO BE TO FRAME MANUFACTURER'S DESIGN, DETAIL AND SPECIFICATION. ALL STRUCTURAL ELEMENTS ARE SHOWN INDICATIVELY. FOR ALL ELEMENTS OF STRUCTURE REFER TO STRUCTURAL ENGINEER'S AND SPECIALIST SUB-CONTRACTOR/FABRICATOR'S DESIGN, DETAIL AND SPECIFICATION. ALL MECHANICAL AND ELECTRICAL ELEMENTS ARE SHOWN INDICATIVELY. FOR ALL M&E INSTALLATIONS REFER TO BUILDING SERVICES ENGINEER'S AND SPECIALIST SUB-CONTRACTOR'S DESIGN, DETAIL AND SPECIFICATION.

Print drawing in colour

These details are for the following windows: W013, W014, W110, W111, W112, W114, W206, W207, W208 & W209.



Soffit to be exposed concrete with plain finish as SE spec. E20/620

EWT 02 - REF TO: 1213_WD_401

Sealant to board perimeter Inner board intumescent

Deflection at head to be specified by SE and detailed by supplier

VCL and breather membrane terminated as noted for cill

Blind fixing detail to be agreed

Suspended ceiling (not shown) stops short of window. (See sections)

Velfac 200 composite window or similar approved, fixed back to LGS frame to suppliers detail.

18mm MDF window board with 3mm radii on front edge. Fixed to LGS frame and supported on Gypliner brackets as suppliers recommendations.

Pink indicates air tightness line

Illbruck FM230 window foam + polyurethane

Breather membrane adhered to ME501 Illbruck window membrane. Window membrane fixed to back of frame with Illbruck gasket (gasket profile to be agreed).

Vapour Barrier dressed under window board to back of frame and sealed

DATE	REV.	DESCRIPTION	BY	CHECKED
27.06.17	G	Window position revised in accordance with manufacturers recommendation	RS	PH
20.02.17	F	Air tightness line indicated, Window head raised by 10mm, concrete soffit note revised, 'or similar' added to Ancon note, Reveal plate indicated at jamb, all as KCL comments 10.02.17, Cavity DPC dressed back to breather membrane, termination of VCL revised.	RS	RS
03.02.17	E	Steel plate shown at window head in lieu of Kevington brick unit, MDF window board in lieu of Formica, All as latest ER's, Cavity closers revised, Fire rating of cavity barrier confirmed	RS	PH
15.06.16	D	Brickwork head support and jamb reveal support revised to Ancon recommendations. Tender status issue	RS	PH
03.05.16	C	Strip of CP board removed behind brickwork support hangers, movement joint under bwk angle support omitted, all as agreed meeting 29.04.16	RS	PH
28.04.16	B	Formica faced window board spec amended.	RS	PH
22.04.16	A	Ancon head support system reference added, Formica faced cill indicated, All cill modified, Blind fixing noted, Sealing of breather membrane and VCL noted.	RS	PH



5 - 8 HARDWICK STREET
LONDON EC1R 4RG
TEL: 020 - 7372 - 8918
www.pcko.co.uk

ARCHITECTS INTERIOR DESIGNERS
MASTER PLANNERS URBAN DESIGNERS

CLIENT	Kier Group		
PROJECT	Greenwood Centre		
DRAWING TITLE	Wide Cavity Window Detail		
STATUS	CONSTRUCTION		
SCALE	1:5 @A3	DRAWN BY	RS
DATE	2016.03	CHECKED BY	PH
DRAWING NO.	1213_WD_432	REVISION	G