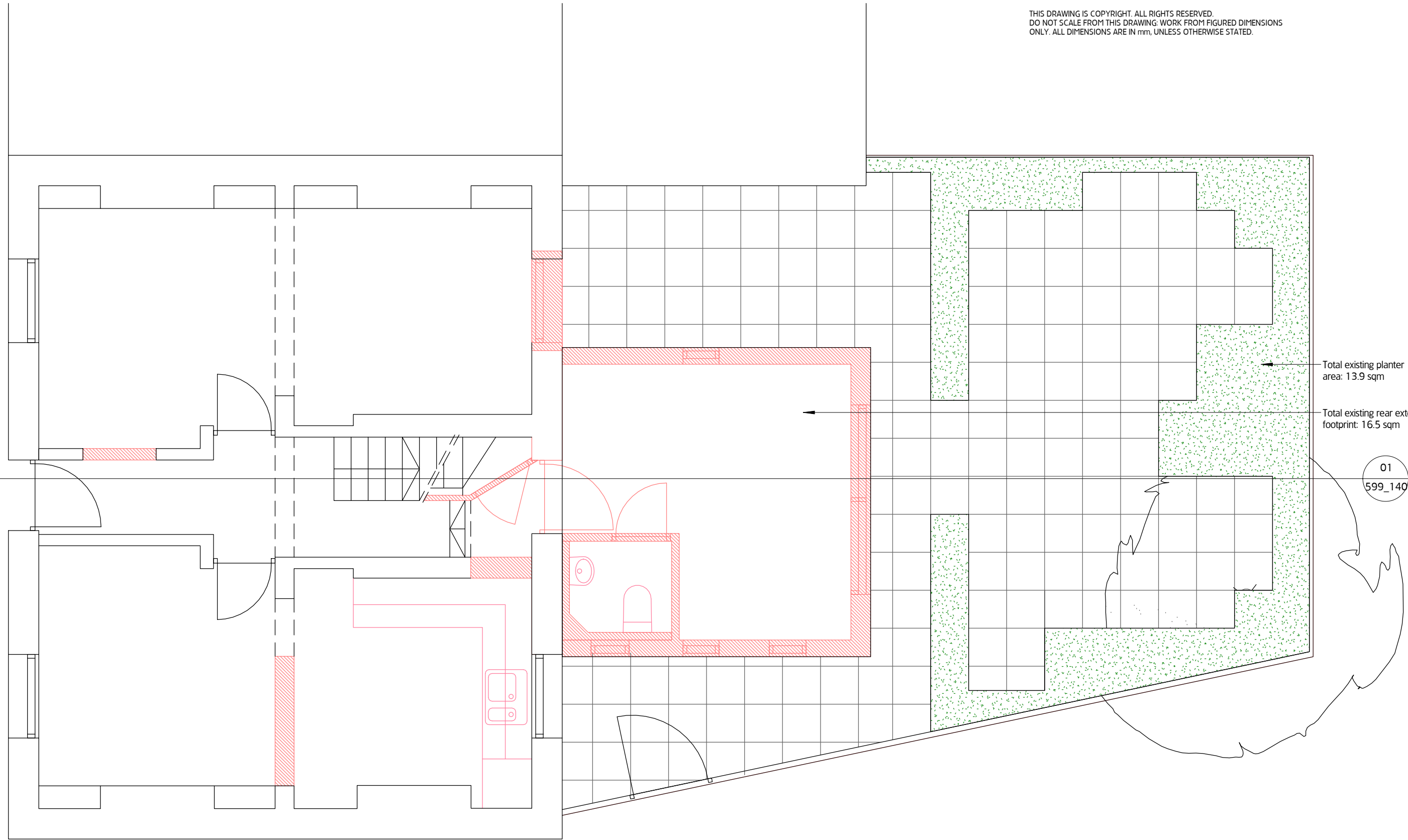
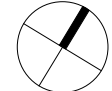


THIS DRAWING IS COPYRIGHT. ALL RIGHTS RESERVED.
DO NOT SCALE FROM THIS DRAWING. WORK FROM FIGURED DIMENSIONS ONLY. ALL DIMENSIONS ARE IN mm, UNLESS OTHERWISE STATED.



01 Existing Ground Floor Plan
1 : 50



 Structures to be demolished

REV	DATE	DESCRIPTION	DRW	CHK
02	03.11.17	Planning	AH	TJM
01	11.07.17	Planning	AH	TJM

MOXON
LONDON
Great Western Studios, 65 Alfred Road, London W2 5EU
t 0207 034 0088 | f 0207 034 0099

SCOTLAND
Ardoch, Crathie, Aberdeenshire AB35 5UN
t 01339 742047 | f 0207 034 0099
mail@moxonarchitects.com | www.moxonarchitects.com

Project	9 St-Martins Almshouses		
Drawing Title	Existing Ground Floor Plan		
Status	Planning		
Drawn by	AH	Checked by	BMA
Date	01.11.16		
Project No.	599	Scale	1 : 50
Size	A3 (420x297mm)		
Drawing No.	599_121		Rev. 02