


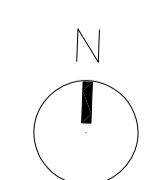
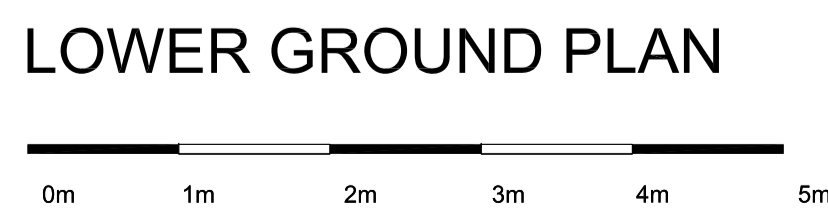
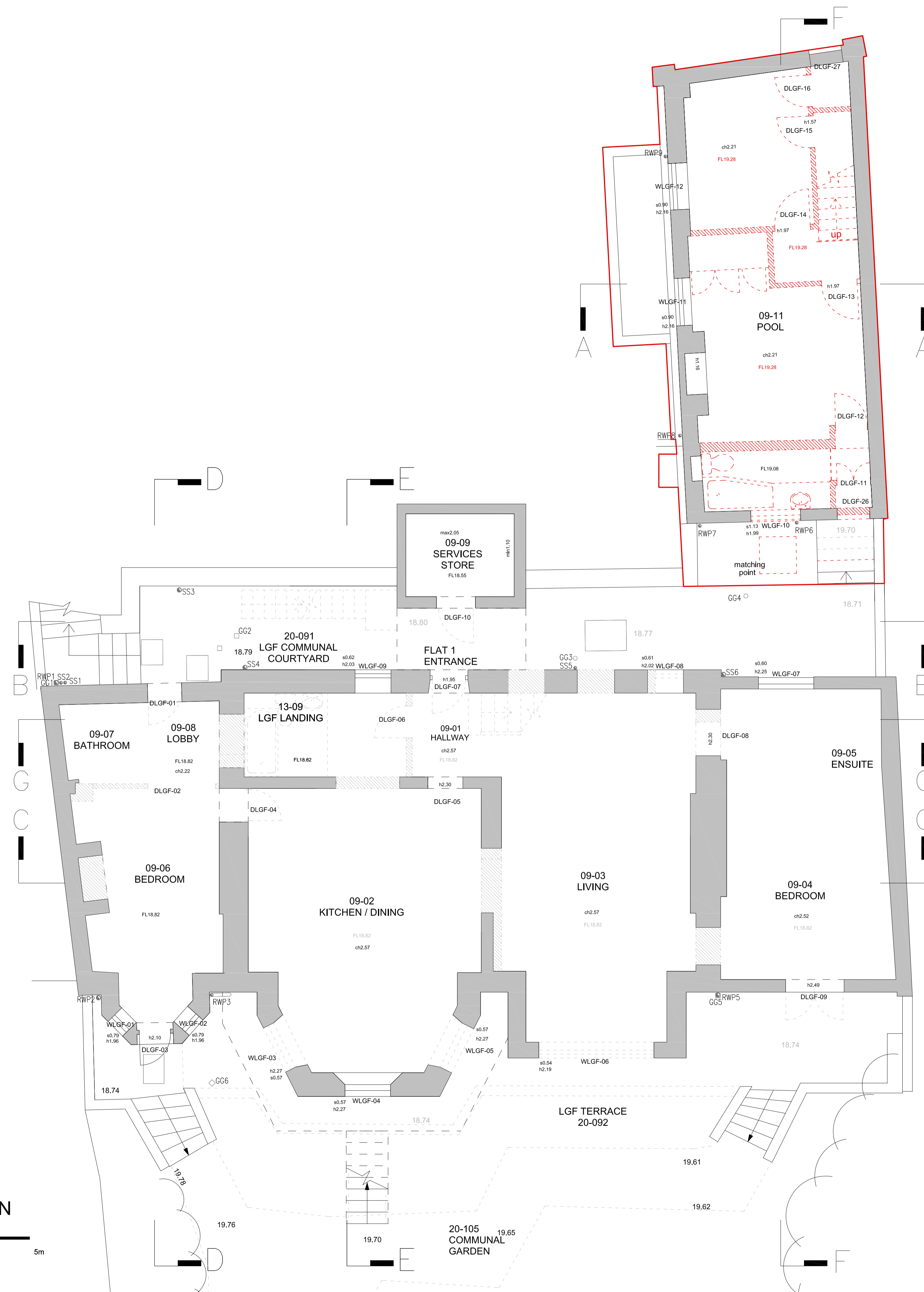


DO NOT SCALE FROM THIS DRAWING
 DRAWING TO BE READ IN CONJUNCTION WITH ALL OTHER ARCHITECTS AND ENGINEERS CONTRACT DRAWING & SPECIFICATIONS. ANY DISCREPANCIES MUST BE BROUGHT TO THE ATTENTION OF THE ARCHITECT IMMEDIATELY.
 THE CONTRACTOR MUST VERIFY ALL DIMENSIONS BY SITE MEASUREMENT BEFORE ORDERING MATERIALS OR MANUFACTURING COMPONENTS.
 SUBSTITUTE MATERIALS & PRODUCTS TO THOSE NAMED WILL BE ACCEPTABLE IF PROVEN TO BE OF EQUAL OR HIGHER PERFORMANCE AND NOT IN CONFLICT WITH OTHER ELEMENTS.

NOTES
KEY:
 Area included in this application
 Consented Demolition associated with Application ref: 2016/0640/P & 2016/148/L
 Proposed demolition
 Note:
 For windows and doors please refer to schedules.



REV	DATE	DESCRIPTION

FOR PLANNING

JOB TITLE		
Keats Grove Hampstead		
DRAWING TITLE		
Lower Ground Floor Plan Proposed Demolition		
JOB No	DWG No	REV
546	D01	-
DRAWN BY	SCALE (AT A1)	DATE
RFB	1:50 (1:100@A3)	Oct17

RICHARD GRIFFITHS ARCHITECTS
 5 Maldstone Mews, 72-76 Borough High Street, London SE1 1GN
 T +44(0)20 7357 8788 | F +44(0)20 7403 7887
 E admin@rgarchitects.com | www.rgarchitects.com