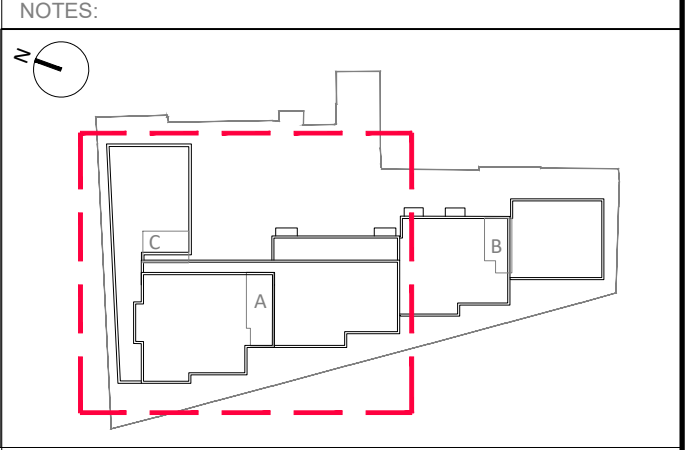


CONTRACT DOCUMENT

This drawing and any related notes are protected by copyright. To the extent that this is a design document it is, in addition, protected by design right. All rights in them are reserved. They are provided for your information only. No part of them or any design to which they relate may be reproduced in any form or by any means without the prior written permission of Fairview New Homes Limited, except as expressly permitted by law. The drawing of any construction and in relation to them may result in both a civil claim and criminal prosecution.



- Columns with 12.5mm dabs and 15mm Knauf Sound Shield board finish.
 - Internal 225 concrete wall to cores with 12.5mm dabs and 12.5mm Sound Shield board finish.
 - 225mm Shear wall to Struct. Eng.s design Finished 50mm insulated board to resi. side of wall and 12.5mm dabs and 12.5mm Sound Shield board finish. Provides thermal and acoustic separation to unheated communal space.
 - Internal 100mm stud wall - (riser cupboards). As below but with 70mm Knauf C Stud.
 - Internal 75mm stud wall, 10kg/m², 12.5mm Knauf Sound panel tapered edge or similar, 50mm Knauf C stud at max. 600mm Ctrs, (450 in Kitchens) Partition filled snug with Crown Partition roll (10kg/m²) or similar approved.
 - 102mm External brickwork skin
 - Internal 300 brick wall with 28mm finish to one side, 9.5mm Plasterboard on dabs, on 8mm scratch coat render (1:1/2-4) on 2 skins of 100mm Lignacite 10.5N/mm² Blockwork, 100 mm Knauf Dritherm 32 to cavity.
 - 140/ 215mm (215 where indicated) block wall construction, 7.3N/sq.mm in mortar M4 strength
 - Internal 300 party wall (between flats and to corridors). Consists both sides 2 layers 15mm Knauf Sound Shield Plus on Vapour barrier on 70mm Twin frame "I" Studs @ 600mm Ctrs. 100mm Isover Min. Wool Ins. central and 70mm between studs.
 - External Brickwork Walls, Partially Insulated Cavity with 12mm CP Sheathing on 100mm Metsec frame with 50mm Min.Kingspan Ins. Vapour control layer and 2x12.5mm Plasterboard finish internally.
 - Masonry Support Angle at Stab Level
 - Masonry Support Angle at High Level
 - Dry riser inlet at GF
 - Dry riser outlet
 - SVP/AAV Soil & Vent Pipe / Air Admittance Valve
 - SS Sub-Stack
 - G Gully
 - RWO Rain Water Outlet
 - EXT Extract grille
 - SUP Supply grille
 - IP Entry panel
 - FS Fire Stop
 - W/D Window/Door reference/Acoustic/Ventilation Lintel reference & lintel
 - WT Wall types - Refer to drawing AB.35.18
 - B, T Balcony / Terrace reference
 - U VALUES TO BE ACHIEVED:
- | | |
|---------------------------------|---------------------------|
| EXTERNAL WALLS / PODIUM | - 0.18 W/m ² K |
| GROUND FLOORS/ UNHEATED SPACES | - 0.20 W/m ² K |
| CEILING SOFFITS UNHEATED SPACES | - 0.20W/m ² K |
| ROOFS | - 0.16W/m ² K |
| WINDOWS/ BALCONY DOORS | - 1.3 W/m ² K |
| EXTERNAL DOORS | - 1.8 W/m ² K |

0	CONDIC ISSUE	EHW	29.09.17
2	PRELIM ISSUE	EHW	28.07.17
1	QA ISSUE	EHW	08.06.17

REV AMENDMENTS

REV	AMENDMENTS	BY	DATE
0	CONDIC ISSUE	EHW	29.09.17
2	PRELIM ISSUE	EHW	28.07.17
1	QA ISSUE	EHW	08.06.17

ehw architects + designers
 EHW Hichin
 Keynes House, Tilehouse Street
 Hichin, Herts SG5 2DW
 EHW London
 10 Margaret Street, London
 W1W 8RL
 T 01462 455257
 E info@ehwarchitects.com
 V ehwarchitects.com
 ISO 9001:2008 Registered

For and on behalf of:

Technical Department, 50 Lancaster Road, Enfield, Middlesex EN2 0BY Tel: 020-8366-1271 Fax: 020-8362-3861 E-mail: technical@fhhtd.co.uk
--

Drawn: FS Date: 28.04.17 Scale: 1:100
 Checked: NER Approved: Architectural

Title: **Block A GA Plan Roof**

Project: **Centric Close, Camden**

Drawing Number: **FNH425-A.12.1.8** Rev: **0**

dwg 2017-13 - Block A GA Plan 08 Roof.dwg A1