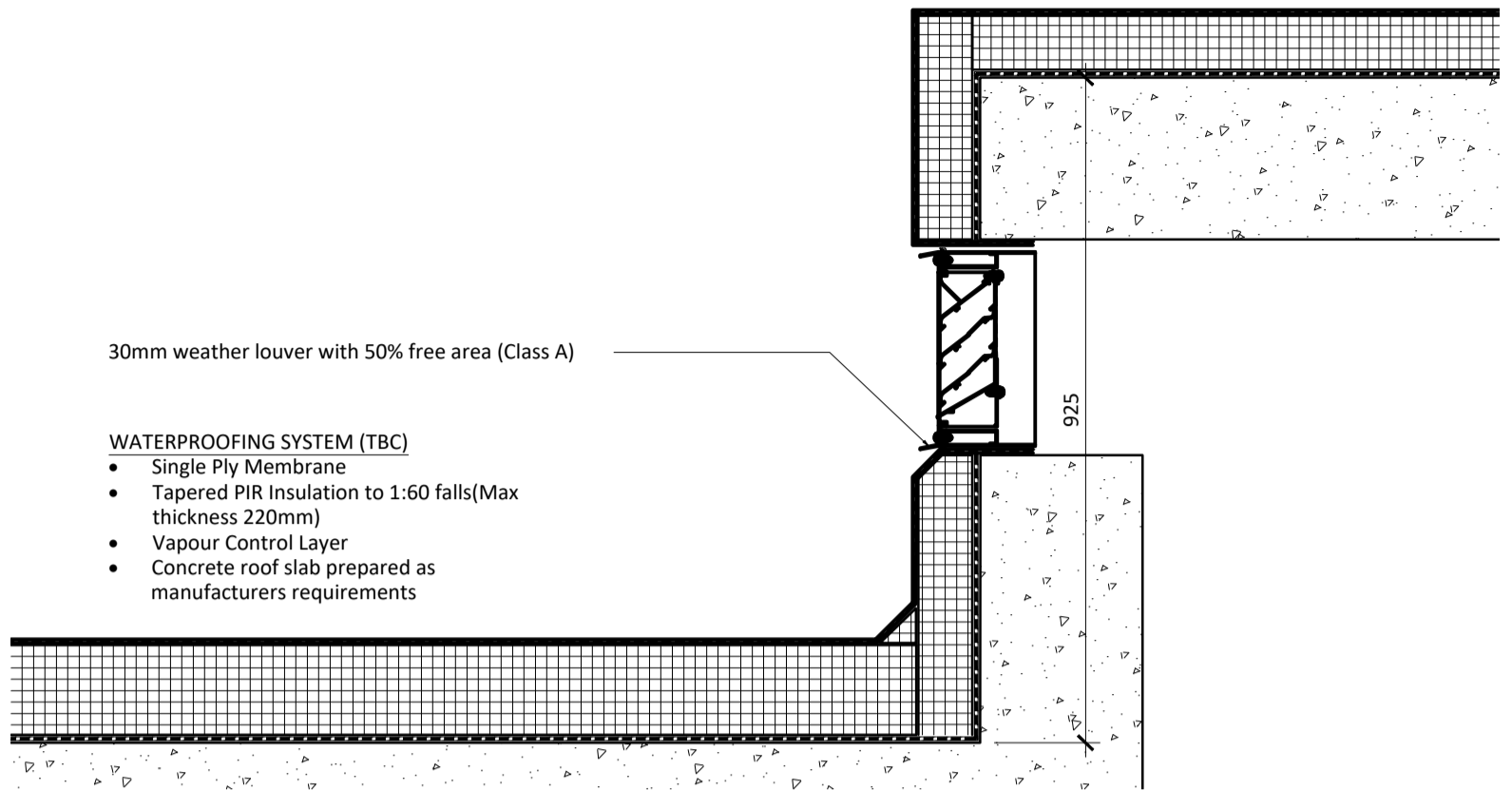
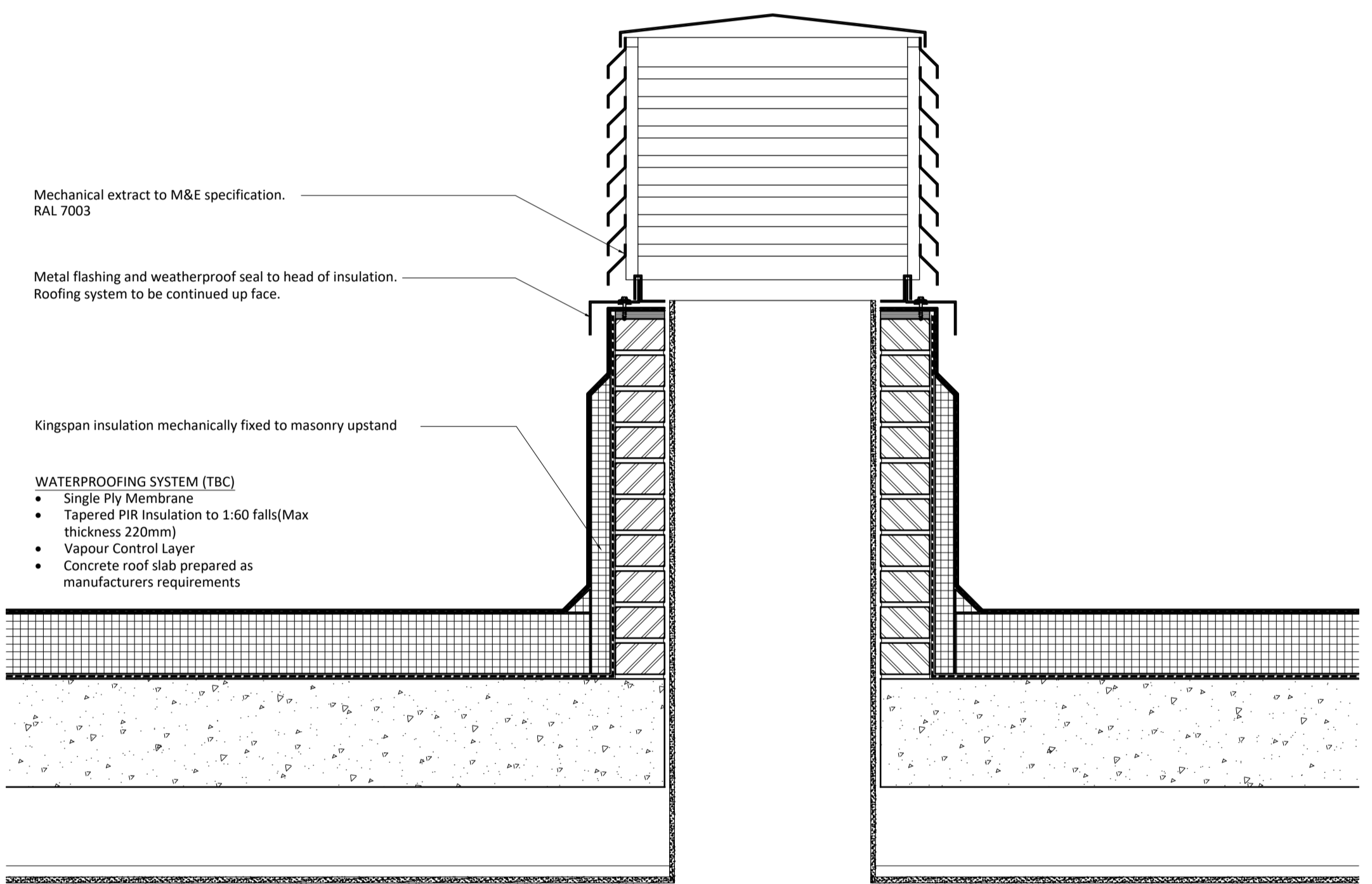


WATERPROOFING SYSTEM (TBC)

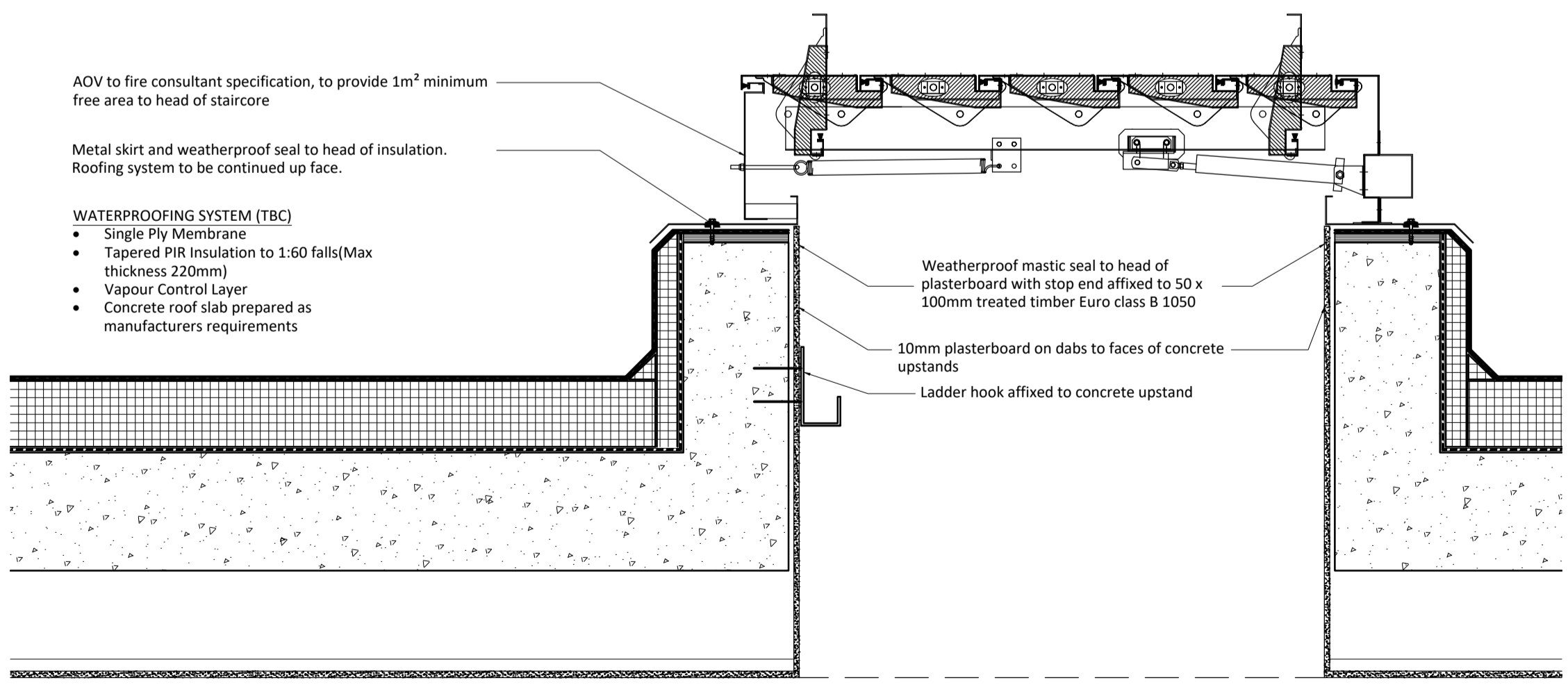
- Single Ply Membrane
- 75mm PIR Insulation
- Vapour Control Layer
- Concrete roof slab prepared as manufacturers requirements



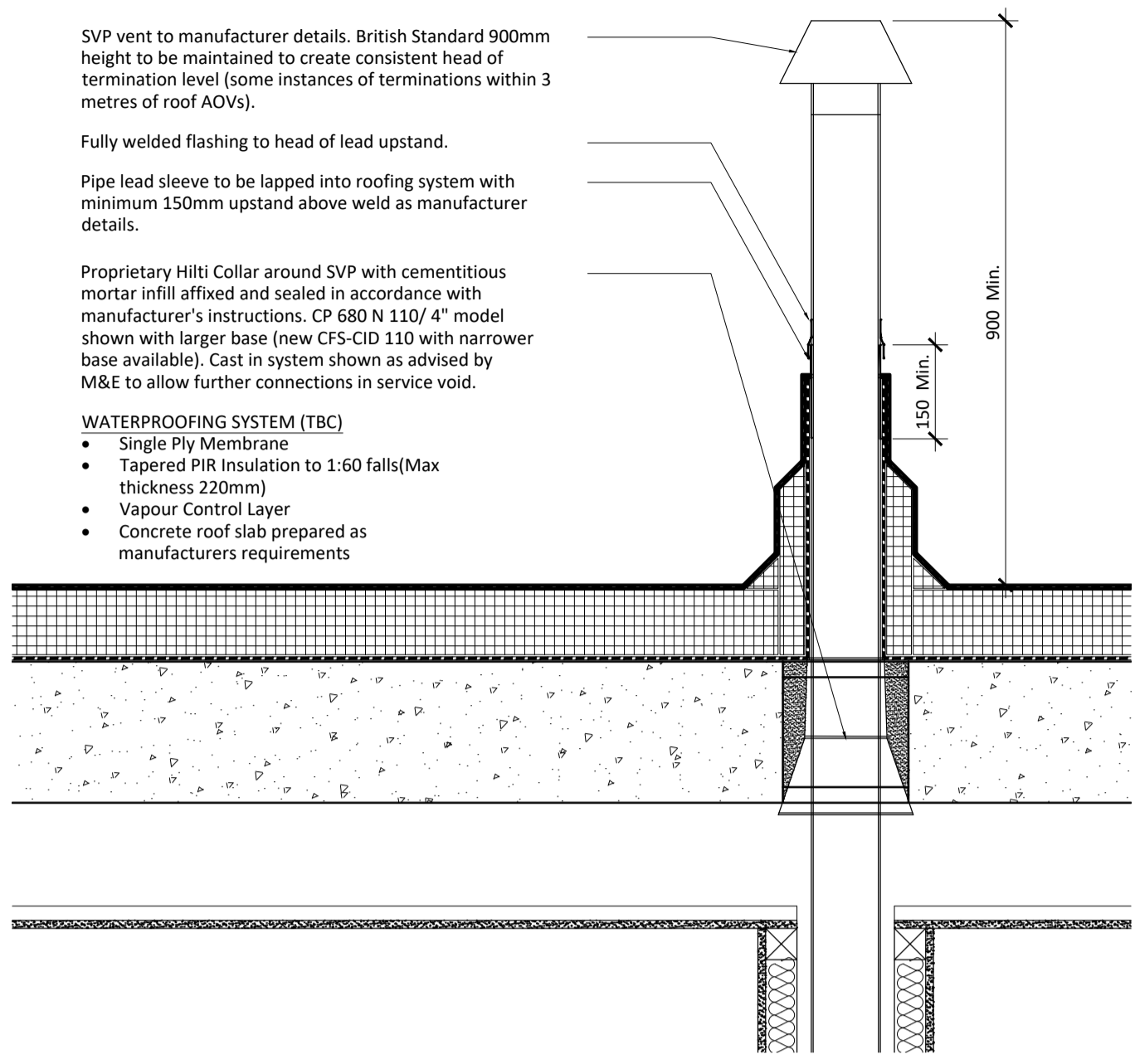
01 Lift Overrun
Scale: 1:10



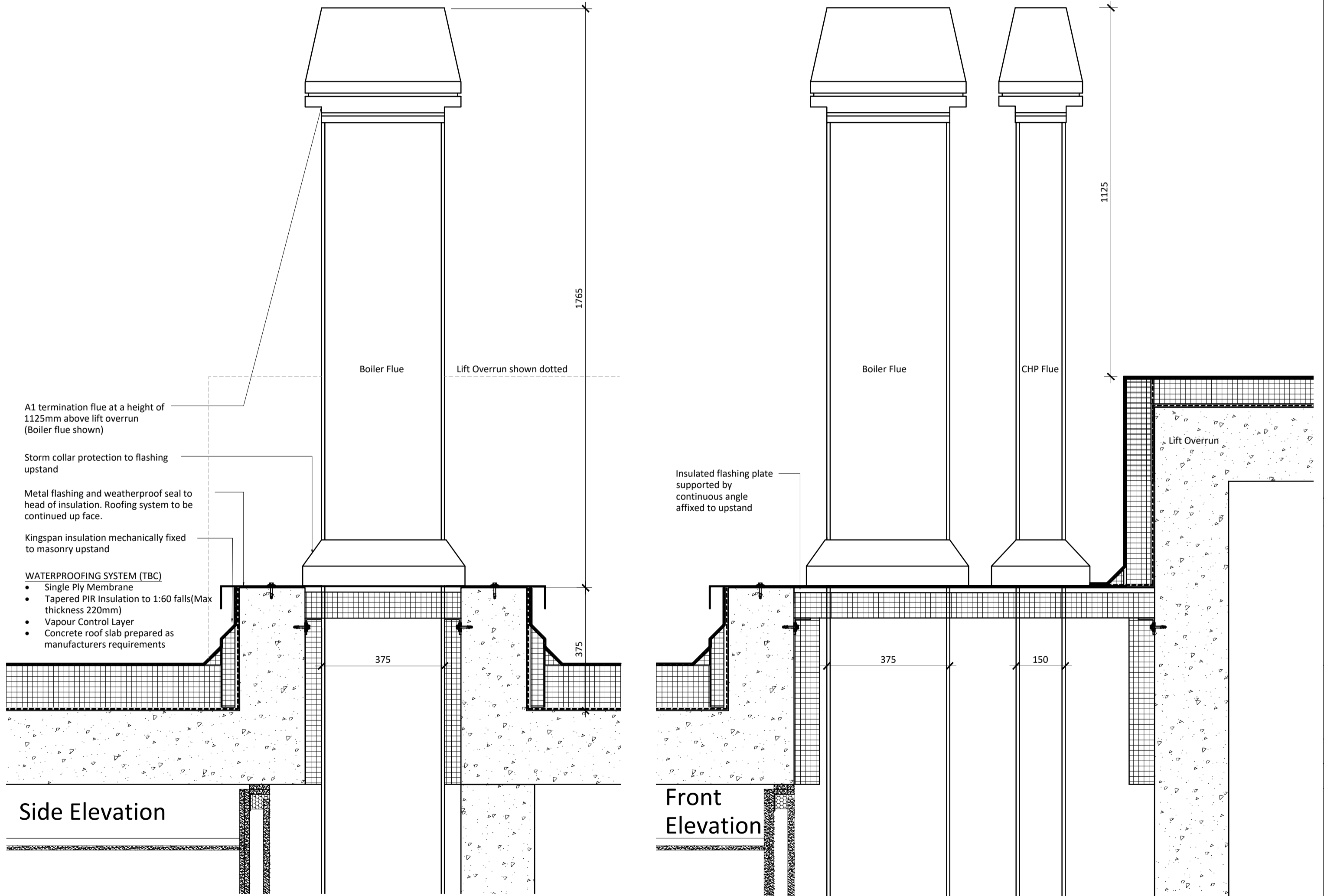
02 Mechanical/ Electrical Riser Vent
Scale: 1:10



03 AOV Exit
Scale: 1:10



04 Roof SVP Through Felt Roof
Scale: 1:10



05 CHP and Boiler Flue
Scale: 1:10

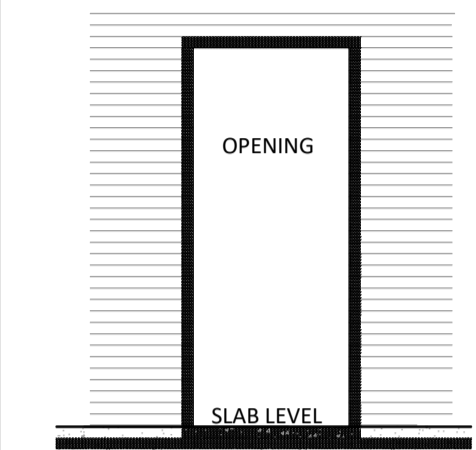
PRELIM ISSUE

This drawing and any related notes are protected by copyright. To the extent that this is a design document it is, in addition, protected by design right. All rights in them are reserved. They are provided for your information only. No part of them or any design to which they relate may be reproduced in any form or by any means without the prior written permission of Fairview New Homes Limited, except as expressly permitted by law. The doing of any unauthorised act in relation to them may result in civil claims and criminal prosecution.

NOTES:

NOMINAL OVERLAP OF SFS SHOWN IS SUBJECT TO ONSITE TOLERANCE AND MANUFACTURER'S RECOMMENDATIONS. MAX. OVERLAP OF 15mm

ALL 35 SERIES DRAWINGS TO BE READ IN CONJUNCTION WITH 12, 14, 15, 16, 17, 34, 36 AND FIRE STRATEGY INFORMATION



FIRESTOPS TO OVERLAPPED WHEREVER STEPS OCCUR TO ENSURE CONTINUOUS SEAL AND FIRE BREAK AROUND WINDOWS

TO BE READ IN CONJUNCTION WITH 12, 14, 15, 16, 17, 20, 34, 35 & 36 SERIES DRAWINGS AND ASDs.

NOMINAL OVERLAPS OF SFS SHOWN SUBJECT TO ONSITE TOLERANCES AND METSEC MANUFACTURER RECOMMENDATIONS

SFS BELOW DPC LEVEL IS TO HAVE A THICKNESS OF CORROSION PROTECTION EQUIVALENT TO Z460 GALVANISING OR SUITABLE BITUMINOUS COATING APPLIED TO STEEL COMPONENTS

ALL TIMBERS ACROSS SITE ACTING AS CAVITY CLOSURES ARE TO BE TREATED NON-COM EURO CLASS B

STRUCTURES TO HAVE FIRE RATINGS DEPENDENT ON HEIGHT OF TOP FLOOR:
BELOW 18m - 60 MINUTES PROTECTION
ABOVE 18m - 90 MINUTES PROTECTION
FIREFIGHTING STAIR AND LIFT CORES - 120 MINUTES

REFER TO FIRE STRATEGY REPORT AND PLANS FOR SPECIFIC DENOMINATIONS AND COMPARTMENTATION

SPECIFIC ITEMS SUCH AS METSEC DESIGN AND FIXINGS, MASONRY SUPPORT ANGLES, RAILINGS AND BALCONIES, CURTAIN WALLING SUBJECT TO FURTHER MANUFACTURER DETAILS

U VALUES TO BE ACHIEVED:

EXTERNAL WALLS	- 0.18 W/m2K
GROUND FLOORS/ PODIUM	- 0.20 W/m2K
CEILING SOFFITS UNHEATED SPACES	- 0.20W/m2K
ROOFS	- 0.16W/m2K
WINDOWS/ BALCONY DOORS	- 1.3 W/m2K
EXTERNAL DOORS	- 1.8 W/m2K

2	PRELIM ISSUE	EHW	28.07.17
1	QA ISSUE	EHW	08.06.17

REV	AMENDMENTS	BY	DATE
		EHW	28.07.17
		EHW	08.06.17

ehw
architects + designers

EHW Hitchin:
Keynes House, Tilehouse Street
Hitchin, Herts SG5 2DW
EHW London
10 Margaret Street, London
W1W 8RL

Tel: 020-8366-1271
Fax: 020-8342-3861
E-mail: technical@fhfhd.co.uk

ISO 9001:2008 Registered

For and on behalf of:
Fairview NEW HOMES Ltd.
Technical Department,
50 Lancaster Road, Enfield,
Middlesex EN2 0BY
Tel: 020-8366-1271
Fax: 020-8342-3861
E-mail: technical@fhfhd.co.uk

Drawn:	SC	Date:	06.06.17	Scale:	1:10
Checked:	NER	Approved:	Architectural		

Title: **Roof Details 3 Penetrations Single Ply Membrane Roofs**

Project: **Centric Close, Camden**

Drawing Number:	FNH425-AB.35.27	Rev:	2
-----------------	------------------------	------	----------