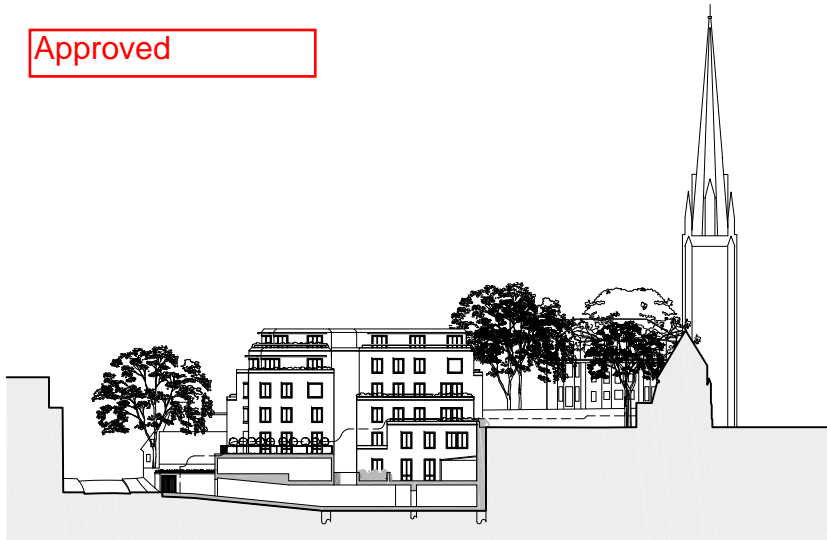


Approved



Extent of Site
New End Proposed Building Christ Church

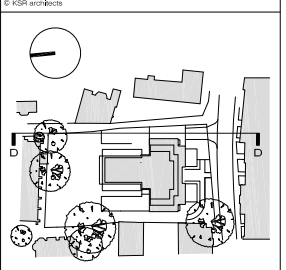


Roof Level
Fifth Floor
Fourth Floor
Third Floor
Second Floor
First Floor
Ground Floor +0.000
Lower Ground Floor -3.400

General notes:
This drawing is copyright of KSR architects. This drawing must be read in conjunction with the designer's risk assessment, specification and all other relevant documentation and drawings. KSR architects accept no liability for any expense, loss or damage of whatsoever nature and however arising from any variation made to this drawing or in the execution of the work to which it relates which has not been referred to them and their approval obtained.
Do not scale from this drawing or the digital data, only figured dimensions are to be used. For Planning refer to linear scale.
Check all dimensions on site.

- Legend**
- External Materials Schedule**
- (A) Brickwork
 - (B) Natural Slate
 - (C) Stone Coping
 - (D) Stone Surround
 - (E) Projecting Stone Faced Balcony
 - (F) Projecting Bronze Framed Surround
 - (G) PPC Aluminium Glazing
 - (H) PPC Metal Balustrade with Timber handrail
 - (I) Metal Balustrade
 - (J) PPC Protecting Louvered Sunscreen

D	Terrace access restricted	27.09.12	LV	GU
F	PLANNING	21.05.12	LV	GU
E	ISSUED FOR PLANNING	24.04.12	LV	GU
D	Terraces facing Christ Church Cottage	02.04.12	LV	GU
C	ISSUED FOR INFORMATION	24.02.12	LV	GU
B	ISSUED FOR INFORMATION	03.02.12	LV	GU
A	ISSUED FOR PLANNING	30.05.11	ARB	GU
Rev	Notes	30/05/11	By	CHD



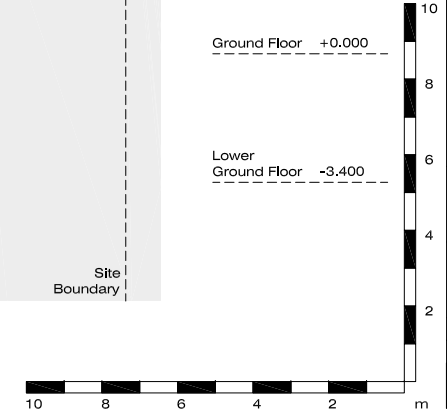
KSR architects
KSR architects
14 Greenland Street
London
NW1 0ND
t: +44 (0)20 7692 5000
f: +44 (0)20 7692 5050
www.ksr-architects.com

Project:
**29 New End
Hampstead
London NW3**

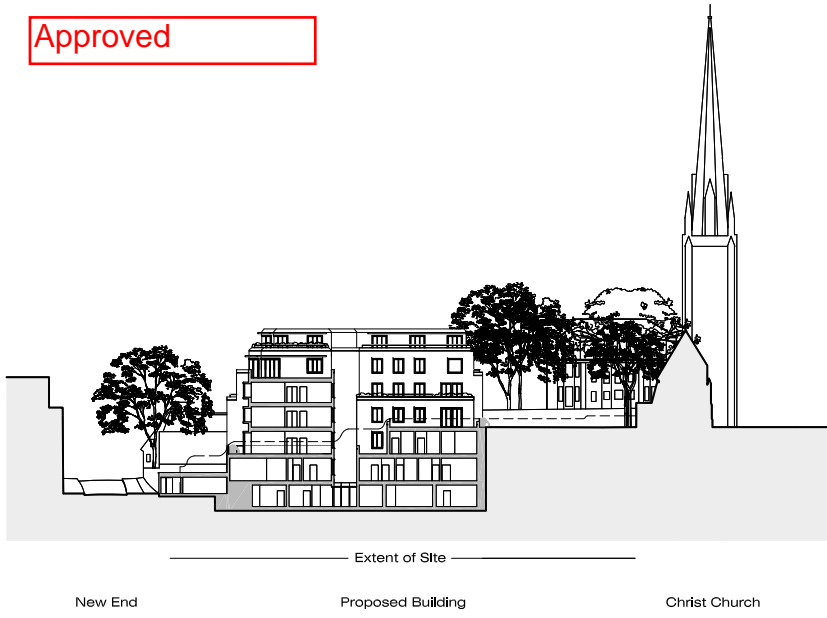
Title:
**PROPOSED
Building Sections
Section DD**

Date: 20.11.09 Drawn By: ARB Checked: .
Scale: 1:100 @ A1 / 1:200 @ A3

Project Ref: Drawing No: Revision:
NEN NEN - PL - 230 G



Approved



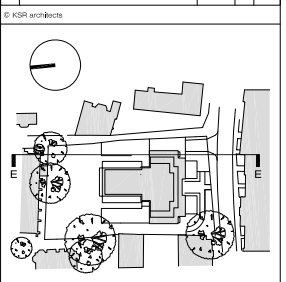
General notes:

This drawing is copyright of KSR architects. This drawing must be read in conjunction with the designer's risk assessment, specification and all other relevant documentation and drawings. KSR architects accept no liability for any expense, loss or damage of whatsoever nature and however arising from any variation made to this drawing or in the execution of the work to which it relates which has not been referred to them and their approval obtained.

Do not scale from this drawing or the digital data, only figured dimensions are to be used. For Planning refer to linear scale.

Check all dimensions on site.

Q	Terrace access restricted	27.09.12	LV	GU
F	PLANNING	21.05.12	LV	GU
E	ISSUED FOR PLANNING	24.04.12	LV	GU
D	Terraces facing Christ Church Cottage	02.04.12	LV	GU
C	ISSUED FOR INFORMATION	24.02.12	LV	GU
B	ISSUED FOR INFORMATION	03.02.12	LV	GU
A	ISSUED FOR PLANNING	30.05.11	ARB	GU
Rev	Notes	30/05/11	By	CHD

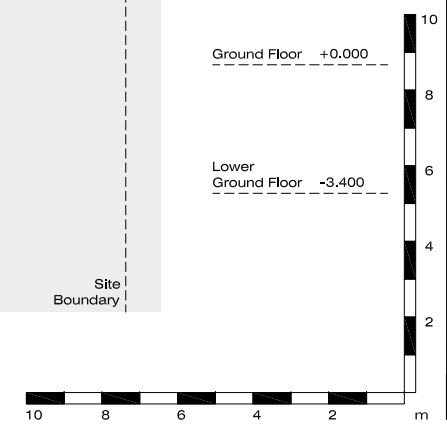


KSR
architects

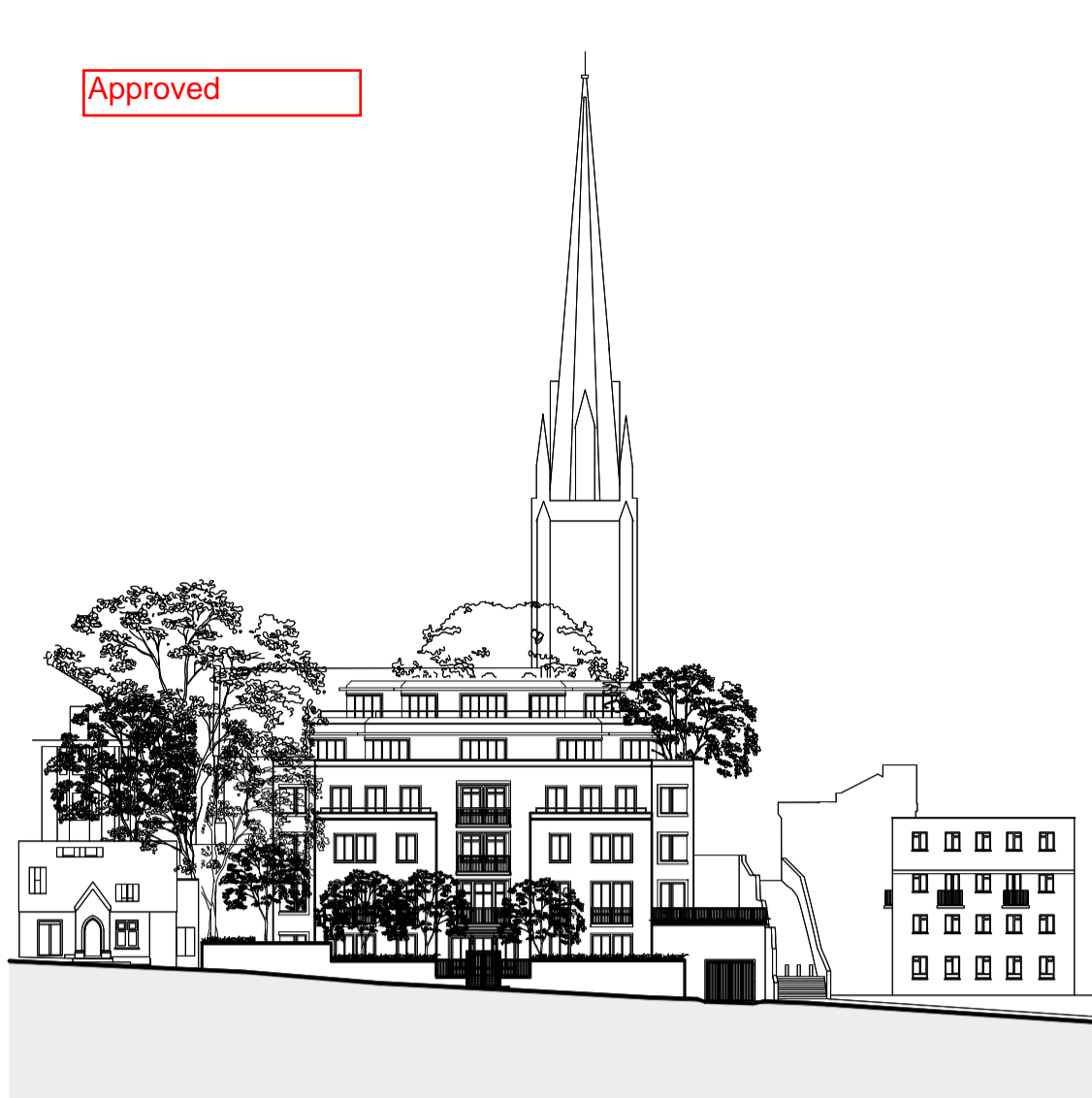
KSR architects
14 Greenland Street
London
NW1 0ND

t: +44 (0)20 7692 5000
f: +44 (0)20 7692 5050
www.ksr-arch.com

Project:	29 New End Hampstead London NW3		
Title:	PROPOSED Building Sections Section EE		
Date:	20.11.09	Drawn by:	ARB
Scale:	1:100 @ A1 / 1:200 @ A3	Checked:	
Project Ref:	NEN	Drawing No:	NEN - PL - 240
Revision:		Revised:	G



Approved



Extent of Site

New End Theatre

Proposed Building

Carnegie House



Roof Level

Fifth Floor

Fourth Floor

Third Floor

Second Floor

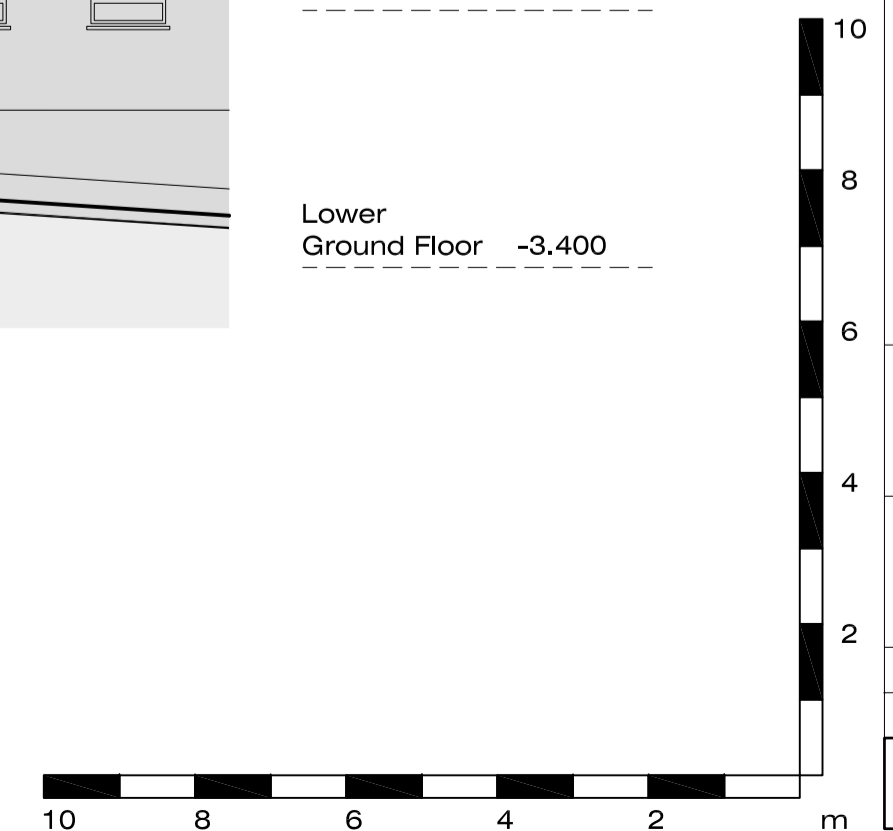
First Floor

Ground Floor +0.000

Lower Ground Floor -3.400

Site Boundary

Site Boundary



General notes:
This drawing is copyright of KSR architects. This drawing must be read in conjunction with the designer's risk assessment, specification and all other relevant documentation and drawings. KSR architects accept no liability for any expense, loss or damage of whatsoever nature and however arising from any variation made to this drawing or in the execution of the work to which it relates which has not been referred to them and their approval obtained.
Do not scale from this drawing or the digital data, only figured dimensions are to be used. For Planning refer to linear scale.
Check all dimensions on site.

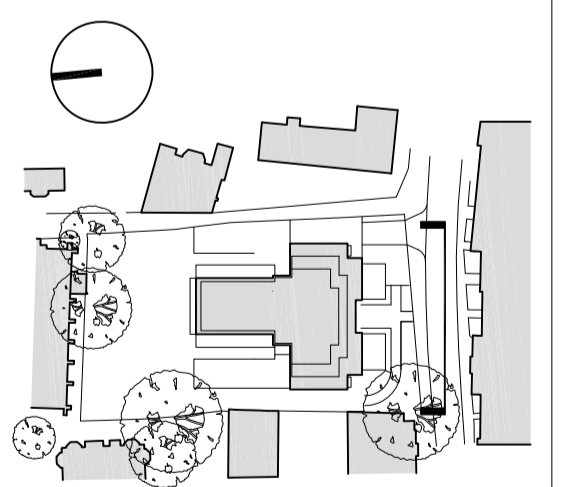
Legend

External Materials Schedule

- (A) Brickwork
- (B) Natural Slates
- (C) Stone Coping
- (D) Stone Surround
- (E) Projecting Stone Faced Balcony
- (F) Projecting Bronze Framed Surround
- (G) PPC Aluminium Glazing
- (H) PPC Metal Balustrade with Timber handrail
- (I) Metal Balustrade
- (J) PPC Protecting Louvered Sunscreen

E	PLANNING	21.05.12	LV	GU
D	ISSUED FOR PLANNING	24.04.12	LV	GU
C	ISSUED FOR INFORMATION	24.02.12	LV	GU
B	ISSUED FOR INFORMATION	03.02.12	LV	GU
A	ISSUED FOR PLANNING	30.05.11	ARB	GU
Rev	Notes	05/11/11	By	CHD

© KSR architects



KSR architects

KSR architects
14 Greenford Street
London
NW1 2ND
t: +44 (0)20 7892 5000
f: +44 (0)20 7892 5050
www.ksr-architects.com

Project:
**29 New End
Hampstead
London NW3**

Title:
**PROPOSED
Building Elevations
South Elevation (New End)**

Date: 20.11.09 Drawn By: ARB Checked:

Scale: 1:100 @ A1 / 1:200 @ A3

Project Ref: NEN Drawing No: NEN - PL - 300 Revisions: E

Approved



Extent of Site
New End Proposed Building Christ Church



General notes:
This drawing is copyright of KSR architects. This drawing must be read in conjunction with the designer's risk assessment, specification and all other relevant documentation and drawings. KSR architects accept no liability for any expense, loss or damage of whatsoever nature and however arising from any variation made to this drawing or in the execution of the work to which it relates which has not been referred to them and their approval obtained.
Do not scale from this drawing or the digital data, only figured dimensions are to be used. For Planning refer to linear scale.
Check all dimensions on site.

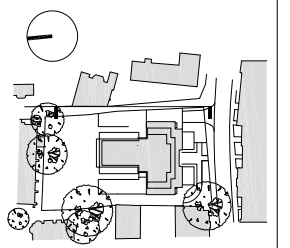
Legend

External Materials Schedule

- (A) Brickwork
- (B) Natural Slates
- (C) Stone Coping
- (D) Stone Surround
- (E) Projecting Stone Faced Balcony
- (F) Projecting Bronze Framed Surround
- (G) PPC Aluminium Glazing
- (H) PPC Metal Balustrade with Timber handrail
- (I) Metal Balustrade
- (J) PPC Protecting Louvered Sunscreen

(J)	Terrace access restricted	27.09.12	LV	GU
(F)	PLANNING	21.05.12	LV	GU
(I)	ISSUED FOR PLANNING	24.04.12	LV	GU
(D)	Terraces facing Christ Church Cottage Handscreen	02.04.12	LV	GU
(C)	ISSUED FOR INFORMATION	24.02.12	LV	GU
(B)	ISSUED FOR INFORMATION	04.02.12	LV	GU
(A)	ISSUED FOR PLANNING	05.06.11	ARB	GU
Rev	Notes	04/11/12	By	CHD

© KSR architects



KSR architects

KSR architects
14 Greenland Street
London
NW1 0ND
t: +44 (0)20 7692 5000
f: +44 (0)20 7692 5050
www.ksr-architects.com

Project:
**29 New End
Hampstead
London NW3**

Title:
**PROPOSED
Building Elevations
East Elevation (Christ Ch. Passage)**

Date: 20.11.09 Drawn by: ARB Checked: .

Scale: 1:100 @ A1 / 1:200 @ A3

Project Ref: NEN Drawing No: NEN - PL - 310

Revision: G