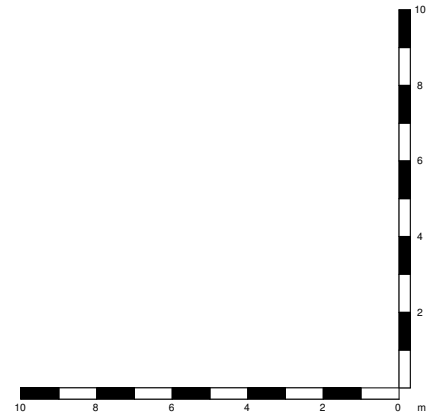




- ▼ Level Roof  
133755
- ▼ Level 5 Fifth Floor  
130180
- ▼ Level 4 Fourth Floor  
126805
- ▼ Level 3 Third Floor  
123430
- ▼ Level 2 Second FFL  
120055
- ▼ Level 1 First FFL  
116680
- ▼ Level 0 Ground Floor  
113305
- ▼ Level -1 Basement  
109930



General notes:  
 This drawing is copyright of KSR architects. This drawing must be read in conjunction with the Designer's Risk Assessment, specification and all other relevant documentation and drawings. KSR architects accept no liability for any expense, loss or damage of whatsoever nature and however arising from any variation made to this drawing or in the execution of the work to which it relates which has not been referred to them and their approval obtained.  
 Do not scale from this drawing or the digital data, only figured dimensions are to be used. For Planning refer to linear scale.  
 Check all dimensions on site prior to carrying out any works - advise of any discrepancy

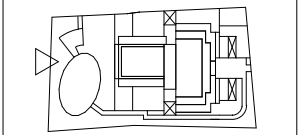
- Notes/Legends
- Legend**
- External Materials Schedule**
- A Brickwork
  - B Slate
  - C Stone Surround
  - D Stone Faced Balcony
  - E Projecting Stone Faced Balcony
  - F Bronze Finish Surround
  - G PPC Aluminium Glazing
  - H PPC Metal Balustrade with Timber Handrail
  - I Metal Balustrade

J	Drawing Revised for MMA Application	25 Aug 17	SAG
Rev	Description	Date	Chkd

© KSR architects  
 Stamp

**MMA Application**

Key Plan



**KSRARCHITECTS**  
 KSR Architects LLP  
 14 Gower Street  
 London WC1E 6BT  
 T +44 (0)20 7882 5000  
 email@ksrarchitects.com  
 www.ksrarchitects.com

Project:  
**29 NEW END**

Title:  
**Proposed North Elevation**

Date: Aug 2017	Drawn By: KSR	Checked: SAG
Scale: 1:100 @ A1	1:200 @ A3	Status:

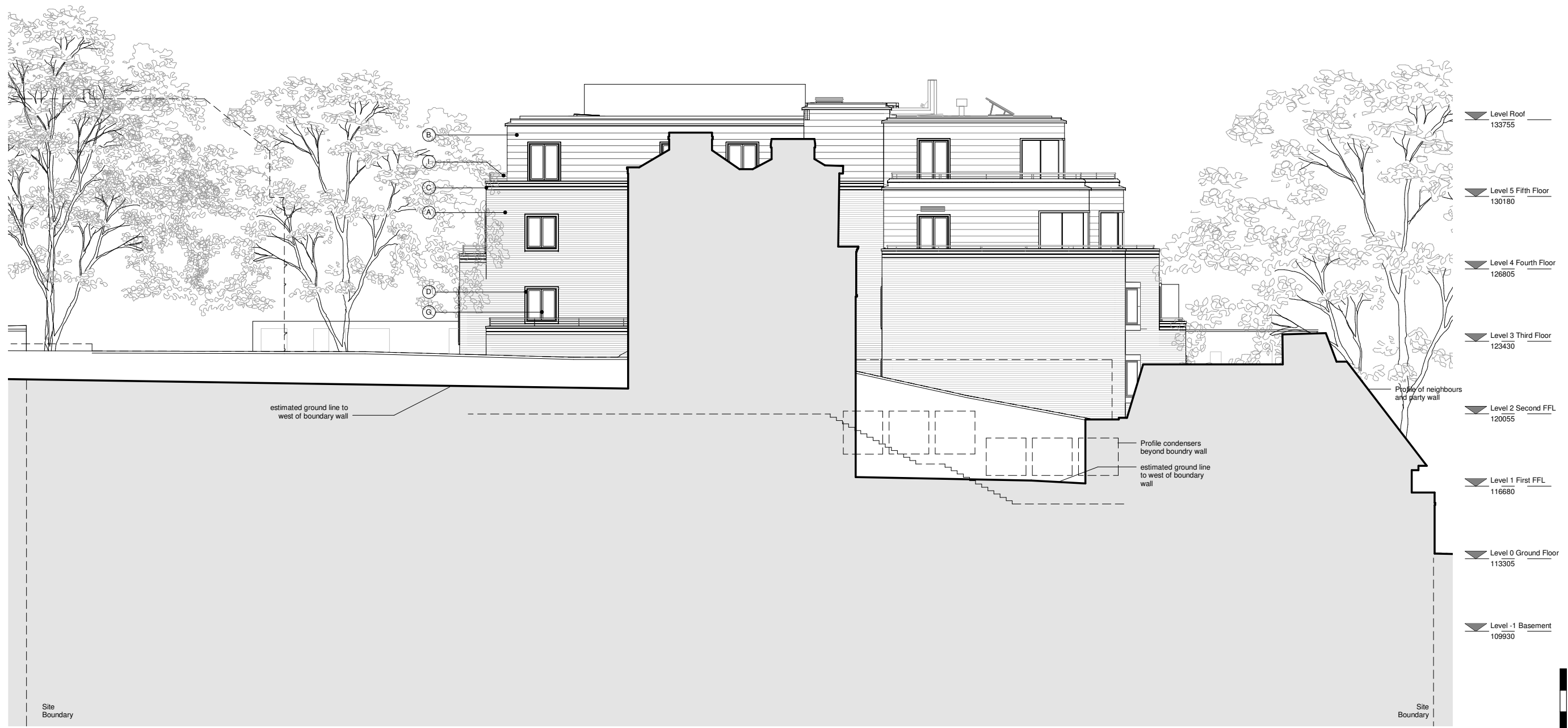
Project Ref: NEN	Drawing No: NEN - PL-320	Revision: J
------------------	--------------------------	-------------

General notes:  
 This drawing is copyright of KSR architects. This drawing must be read in conjunction with the Designer's Risk Assessment, specification and all other relevant documentation and drawings. KSR architects accept no liability for any expense, loss or damage of whatsoever nature and however arising from any variation made to this drawing or in the execution of the work to which it relates which has not been referred to them and their approval obtained.  
 Do not scale from this drawing or the digital data, only figured dimensions are to be used. For Planning refer to linear scale.  
 Check all dimensions on site prior to carrying out any works - advise of any discrepancy

Notes/Legends

Legend

- External Materials Schedule
- A Brickwork
  - B Slate
  - C Stone Surround
  - D Stone Faced Balcony
  - E Projecting Stone Faced Balcony
  - F Bronze Finish Surround
  - G PPC Aluminium Glazing
  - H PPC Metal Balustrade with Timber Handrail
  - I Metal Balustrade



J Drawing Revised for MMA Application 25 Aug 17 SAG

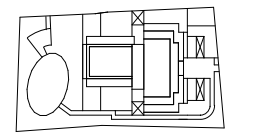
Rev	Description	Date	Chkd

© KSR architects

Stamp

MMA Application

Key Plan



**KSRARCHITECTS**  
 KSR Architects LLP  
 14 Grosvenor Street  
 London W1R 0ND  
 info@ksrarchitects.com  
 t +44 (0)20 7882 5000  
 www.ksrarchitects.com

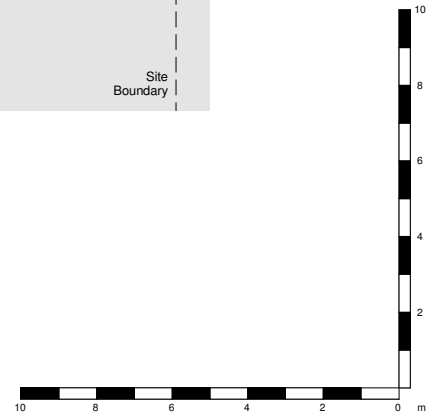
Project:  
**29 NEW END**

Title:  
**Proposed West Elevation**

Date: Aug 2017	Drawn By: KSR	Checked: SAG
----------------	---------------	--------------

Scale: 1:100 @ A1	1:200 @ A3	Status:
-------------------	------------	---------

Project Ref: NEN	Drawing No: NEN - PL-330	Revision: J
------------------	--------------------------	-------------

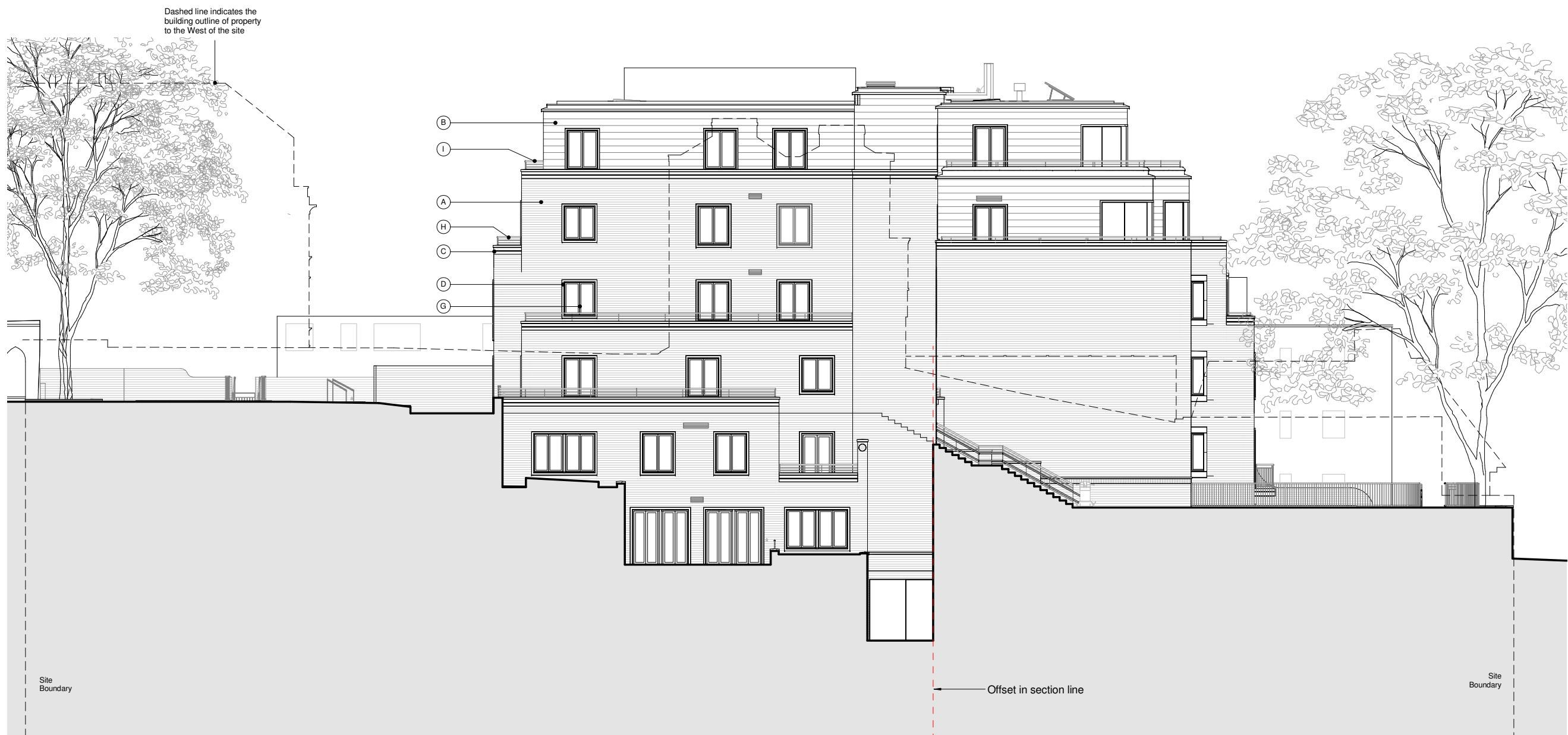


General notes:  
 This drawing is copyright of KSR architects. This drawing must be read in conjunction with the Designer's Risk Assessment, specification and all other relevant documentation and drawings. KSR architects accept no liability for any expense, loss or damage of whatsoever nature and however arising from any variation made to this drawing or in the execution of the work to which it relates which has not been referred to them and their approval obtained.  
 Do not scale from this drawing or the digital data, only figured dimensions are to be used. For Planning refer to linear scale.  
 Check all dimensions on site prior to carrying out any works - advise of any discrepancy

Notes/Legends

- Legend**
- External Materials Schedule**
- A Brickwork
  - B Slate
  - C Stone Surround
  - D Stone Faced Balcony
  - E Projecting Stone Faced Balcony
  - F Bronze Finish Surround
  - G PPC Aluminium Glazing
  - H PPC Metal Balustrade with Timber Handrail
  - I Metal Balustrade

Dashed line indicates the building outline of property to the West of the site

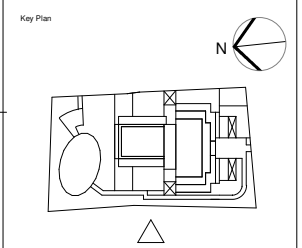


- Level Roof 133755
- Level 5 Fifth Floor 130180
- Level 4 Fourth Floor 126805
- Level 3 Third Floor 123430
- Level 2 Second FFL 120055
- Level 1 First FFL 116680
- Level 0 Ground Floor 113305
- Level -1 Basement 109930

- B
- I
- A
- H
- C
- D
- G

J	Drawing Revised for MMA Application	25 Aug 17	SAG
Rev	Description	Date	Chkd
© KSR architects			
Stamp			

**MMA Application**



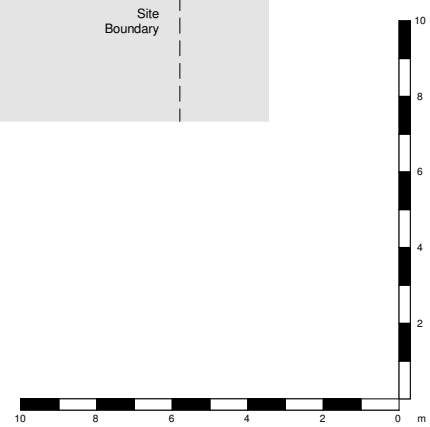
**KSRARCHITECTS**  
 KSR Architects LLP  
 14 Grosvenor Street  
 London W1G 0ND  
 info@ksrarchitects.com  
 t +44 (0)20 7882 5000  
 www.ksrarchitects.com

Project:  
**29 NEW END**

Title:  
**Proposed West Elevation (Lightwell)**

Date: Aug 2017	Drawn By: KSR	Checked: SAG
Scale: 1:100 @ A1	1:200 @ A3	Status:

Project Ref: NEN	Drawing No: NEN - PL-340	Revision: J
------------------	--------------------------	-------------



Site Boundary

Offset in section line

Site Boundary

General notes:  
 This drawing is copyright of KSR architects. This drawing must be read in conjunction with the Designer's Risk Assessment, specification and all other relevant documentation and drawings. KSR architects accept no liability for any expense, loss or damage of whatsoever nature and however arising from any variation made to this drawing or in the execution of the work to which it relates which has not been referred to them and their approval obtained.  
 Do not scale from this drawing or the digital data, only figured dimensions are to be used. For Planning refer to linear scale.  
 Check all dimensions on site prior to carrying out any works - advise of any discrepancy  
 Notes/Legends



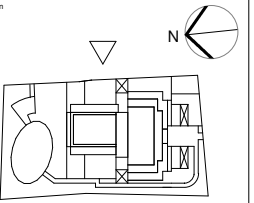
J Drawing Revised for MMA Application 25 Aug 17 SAG

Rev	Description	Date	Chkd

© KSR architects  
 Stamp

MMA Application

Key Plan



**KSRARCHITECTS**  
 KSR Architects LLP  
 14 Grosvenor Street London W1R 0ND  
 info@ksrarchitects.com  
 t +44 (0)20 7882 5000  
 www.ksrarchitects.com

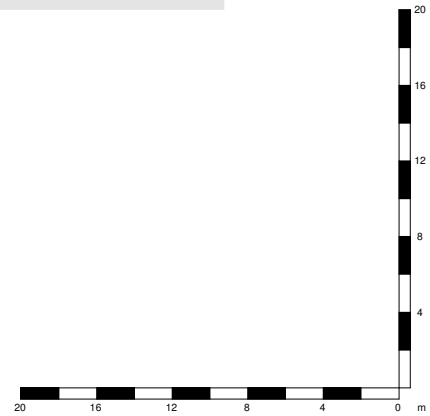
Project:  
**29 NEW END**

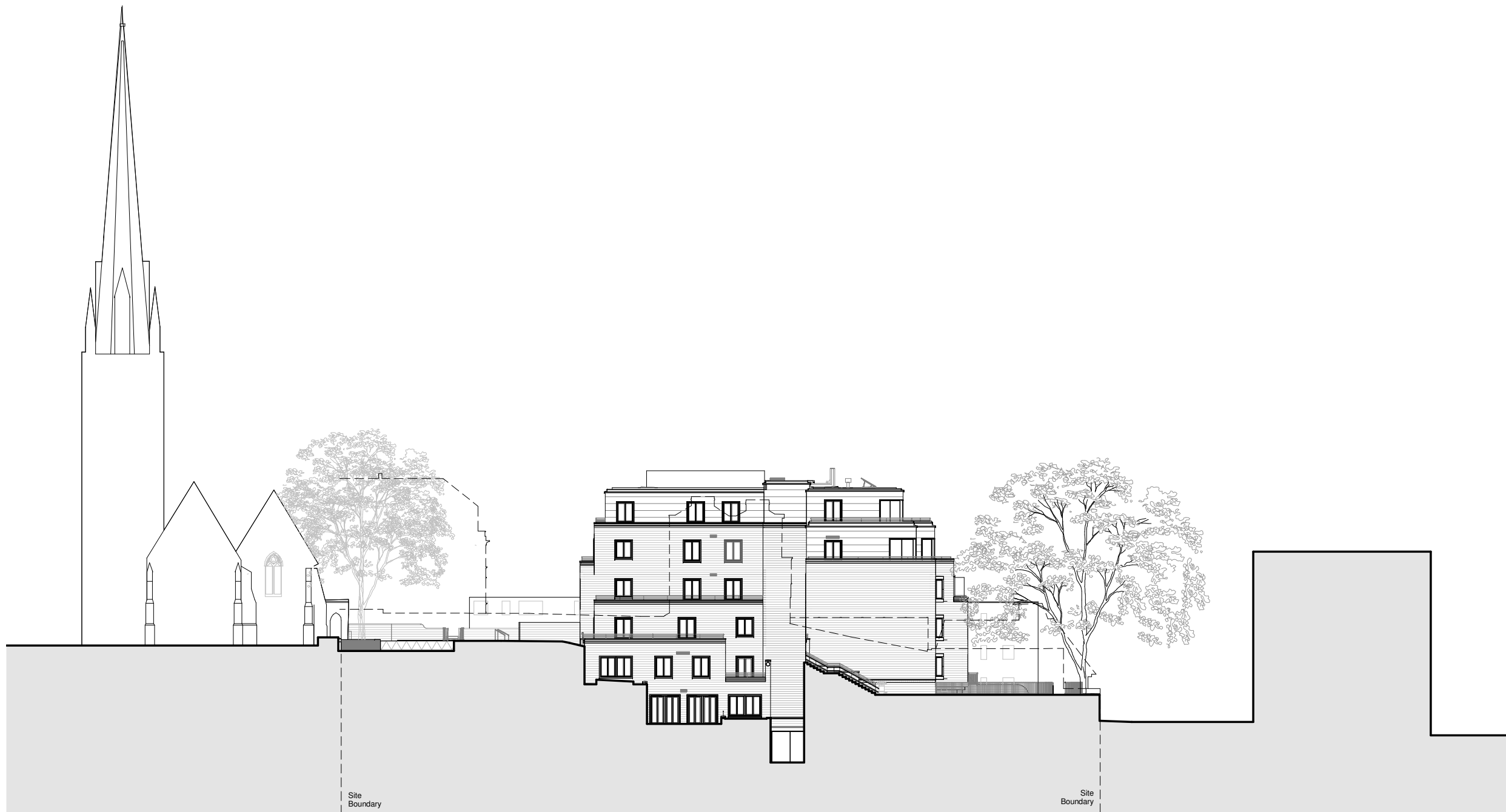
Title:  
**East Elevation (Context)**

Date: Aug 2017	Drawn By: KSR	Checked: SAG
----------------	---------------	--------------

Scale: 1:200 @ A1	1:400 @ A3	Status:
-------------------	------------	---------

Project Ref: NEN	Drawing No: NEN - PL-370	Revision: J
------------------	--------------------------	-------------





General notes:  
 This drawing is copyright of KSR architects. This drawing must be read in conjunction with the Designer's Risk Assessment, specification and all other relevant documentation and drawings. KSR architects accept no liability for any expense, loss or damage of whatsoever nature and however arising from any variation made to this drawing or in the execution of the work to which it relates which has not been referred to them and their approval obtained.  
 Do not scale from this drawing or the digital data, only figured dimensions are to be used. For Planning refer to linear scale.  
 Check all dimensions on site prior to carrying out any works - advise of any discrepancy

Notes/Legends

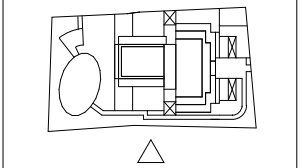
J Drawing Revised for MMA Application 25 Aug 17 SAG

Rev	Description	Date	Chkd

© KSR architects  
 Stamp

MMA Application

Key Plan



**KSRARCHITECTS**  
 KSR Architects LLP  
 14 Gower Street London WC1E 6BT  
 Tel: +44 (0)20 7882 5000  
 Email: info@ksrarchitects.com  
 Website: www.ksrarchitects.com

Project:  
**29 NEW END**

Title:  
**West Elevation (Context)**

Date: Aug 2017	Drawn By: KSR	Checked: SAG
----------------	---------------	--------------

Scale: 1:200 @ A1	1:400 @ A3	Status:
-------------------	------------	---------

Project Ref: NEN	Drawing No: NEN - PL-380	Revision: J
------------------	--------------------------	-------------

