

General notes:
This drawing is copyright of KSR architects. This drawing must be read in conjunction with the Designer's Risk Assessment, specification and all other relevant documentation and drawings. KSR architects accept no liability for any expense, loss or damage of whatsoever nature and however arising from any variation made to this drawing or in the execution of the work to which it relates which has not been referred to them and their approval obtained.
Do not scale from this drawing or the digital data, only figured dimensions are to be used. For Planning refer to linear scale.
Check all dimensions on site prior to carrying out any works – advise of any discrepancy
Notes/Legends

J Drawing Revised for MMA Application 25 Aug 17 SAS

Rev	Description	Date	Chkd
0	As Issued		

© KSR architects

Stamp

MMA Application

Key Plan



KSRARCHITECTS
KSR Architects LLP
14 Gower Street
London WC1E 6BT
t: +44 (0)20 7882 5000
e: info@ksrarchitects.com
w: www.ksrarchitects.com

Project:
29 NEW END

Title:
Proposed Block Plan

Date:	Aug 2017	Drawn By:	KSR	Checked:	SAS
Scale:	1:250 @ A1	1:500 @ A3	Status:		

Project Ref:	Drawing No:	Revision:
NEN	NEN - PL-003	J



General notes:

This drawing is copyright of KSR architects. This drawing must be read in conjunction with the Designer's Risk Assessment, specification and all other relevant documentation and drawings. KSR architects accept no liability for any expense, loss or damage of whatsoever nature and however arising from any variation made to this drawing or in the execution of the work to which it relates which has not been referred to them and their approval obtained.

Do not scale from this drawing or the digital data, only figured dimensions are to be used. For Planning refer to linear scale.

Check all dimensions on site prior to carrying out any works – advise of any discrepancy

Notes/Legends

J	Drawing Revised for MMA Application	25 Aug 17	SAS
Rev	Description	Date	Chkd
© KSR architects			
Stamp			
MMA Application			
Key Plan			
KSRARCHITECTS			
KSR Architects LLP 14 Gower Street London WC1E 6BD t +44 (0)20 7882 5000 m info@ksrarchitects.com w www.ksrarchitects.com			
Project: 29 NEW END			
Title: Proposed Lower Ground Floor			
Date:	Aug 2017	Drawn By:	KSR
Scale:	1:100 @ A1	1:200 @ A3	Status: Planning
Project Ref:	NEN	Drawing No:	NEN - PL-090
		Checked:	SAS
		Revision:	J

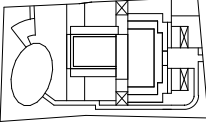


General notes:
This drawing is copyright of KSR architects. This drawing must be read in conjunction with the Designer's Risk Assessment, specification and all other relevant documentation and drawings. KSR architects accept no liability for any expense, loss or damage of whatsoever nature and however arising from any variation made to this drawing or in the execution of the work to which it relates which has not been referred to them and their approval obtained.
Do not scale from this drawing or the digital data, only figured dimensions are to be used. For Planning refer to linear scale.
Check all dimensions on site prior to carrying out any works - advise of any discrepancy

Notes/Legends

J	Drawing Revised for MMA Application	25 Aug 17	SAS
Rev	Description	Date	Chkd
© KSR architects			
Stamp			

MMA Application

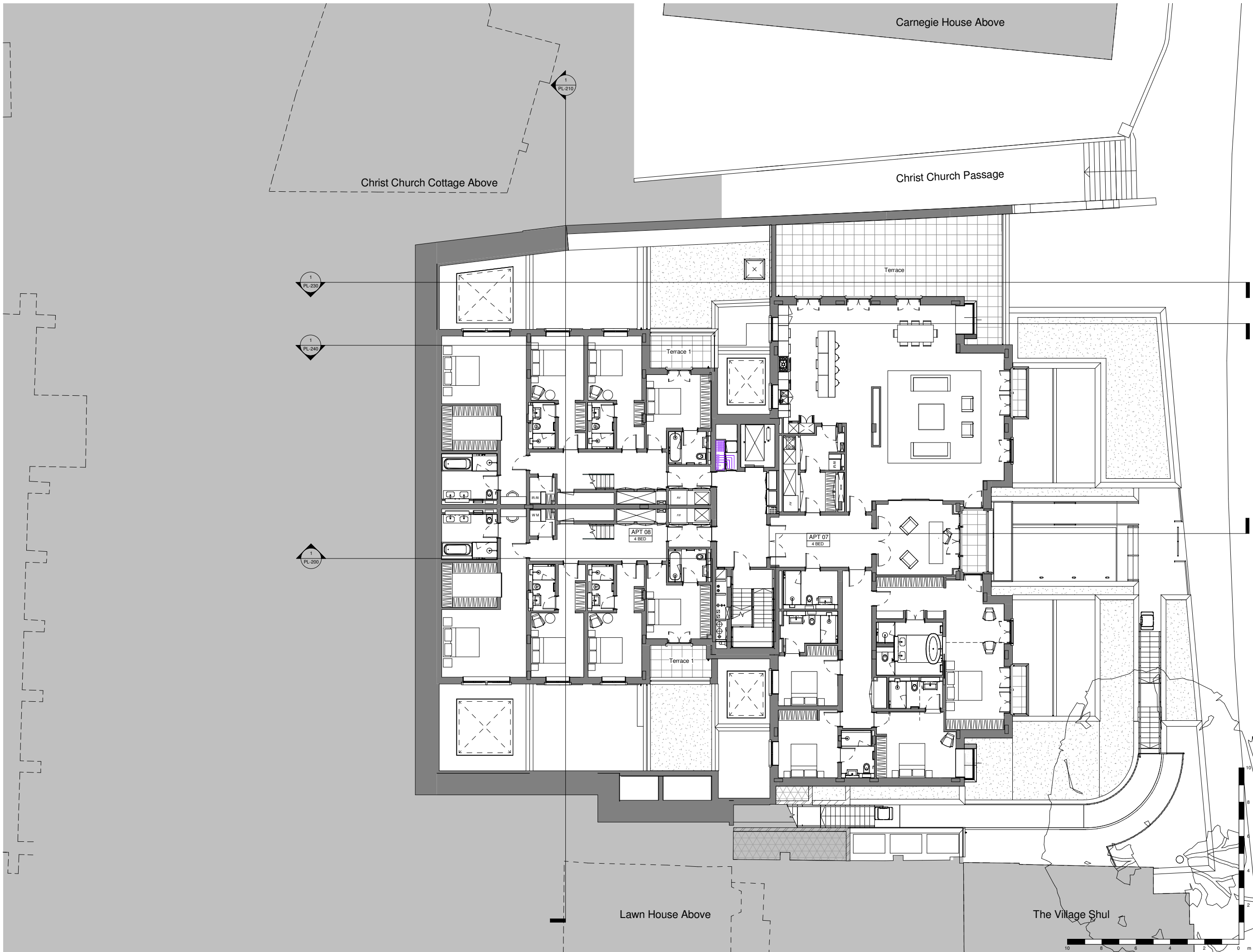


KSRARCHITECTS
KSR Architects LLP
14 Gower Street London WC1E 6BT
t +44 (0)20 7882 5000
info@ksrarchitects.com
www.ksrarchitects.com

Project:
29 NEW END

Title:
Proposed Ground Floor

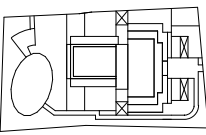
Date:	Aug 2017	Drawn By: KSR	Checked: SAS
Scale:	1:100 @ A1	1:200 @ A3	Status: Planning
Project Ref:	NEN	Drawing No:	NEN - PL-100
		Revision:	J



General notes:
This drawing is copyright of KSR architects. This drawing must be read in conjunction with the Designer's Risk Assessment, specification and all other relevant documentation and drawings. KSR architects accept no liability for any expense, loss or damage of whatsoever nature and however arising from any variation made to this drawing or in the execution of the work to which it relates which has not been referred to them and their approval obtained.
Do not scale from this drawing or the digital data, only figured dimensions are to be used. For Planning refer to linear scale.
Check all dimensions on site prior to carrying out any works - advise of any discrepancy
Notes/Legends

J	Drawing Revised for MMA Application	25 Aug 17	SAS
Rev	Description	Date	Chkd
© KSR architects			
Stamp			

MMA Application

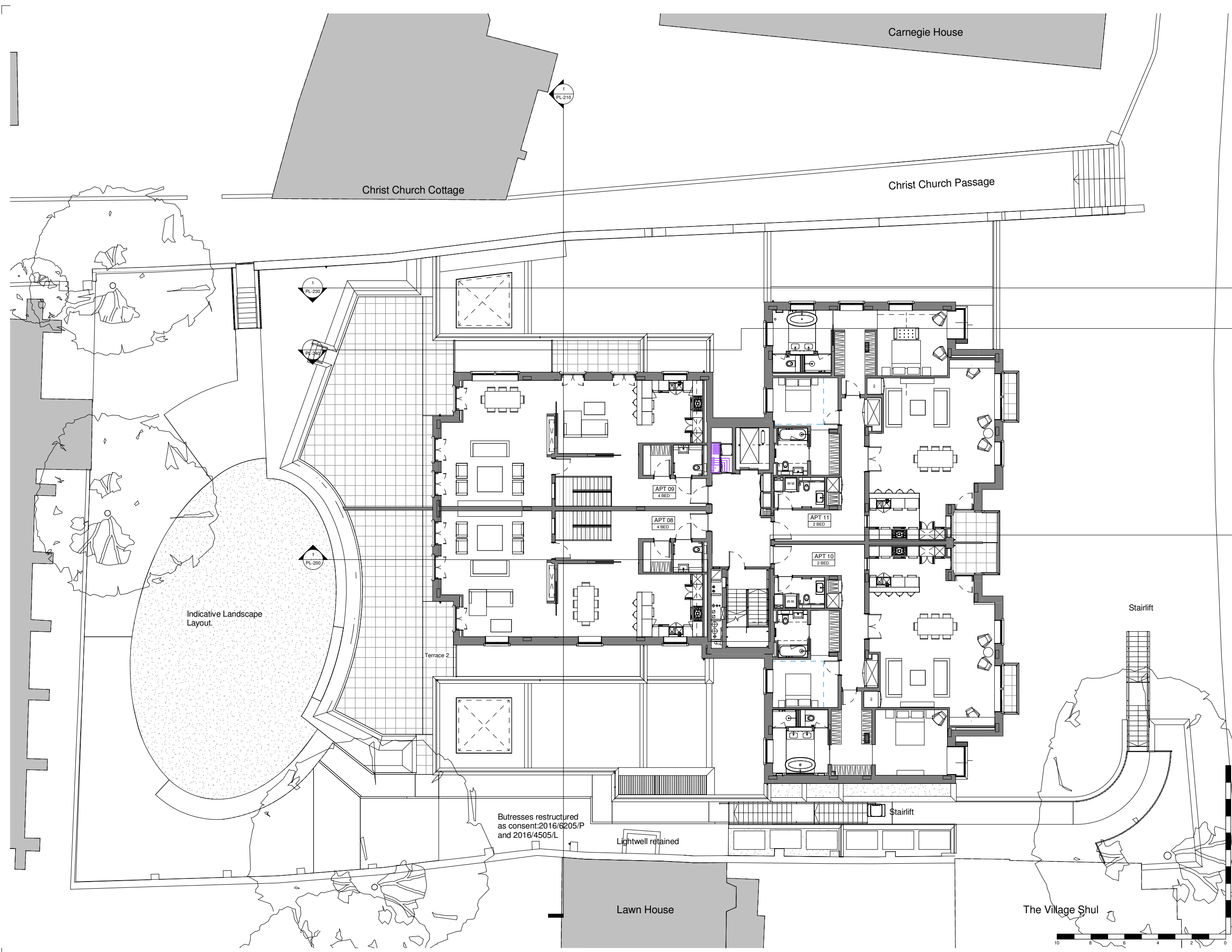


KSRARCHITECTS
KSR Architects LLP
14 Grosvenor Street
London W1T 6ND
info@ksrarchitects.com
t +44 (0)20 7882 5000
www.ksrarchitects.com

Project:
29 NEW END

Title:
Proposed First Floor

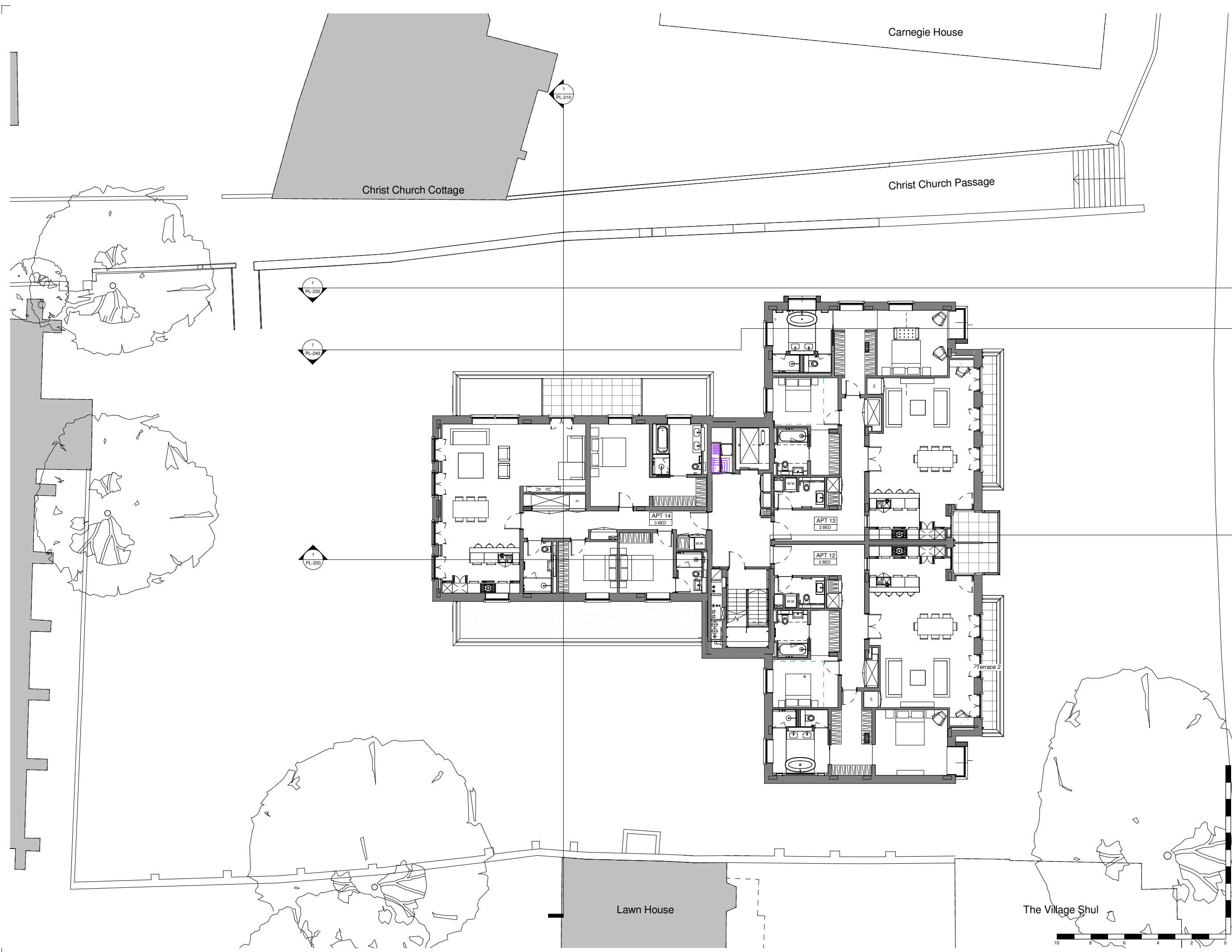
Date:	Aug 2017	Drawn By: KSR	Checked: SAS
Scale:	1:100 @ A1	1:200 @ A3	Status: Planning
Project Ref:	Drawing No:	Revision:	
NEN	NEN - PL-110	J	



General notes:
This drawing is copyright of KSR architects. This drawing must be read in conjunction with the Designer's Risk Assessment, specification and all other relevant documentation and drawings. KSR architects accept no liability for any expense, loss or damage of whatsoever nature and however arising from any variation made to this drawing or in the execution of the work to which it relates which has not been referred to them and their approval obtained.
Do not scale from this drawing or the digital data, only figured dimensions are to be used. For Planning refer to linear scale.
Check all dimensions on site prior to carrying out any works - advise of any discrepancy

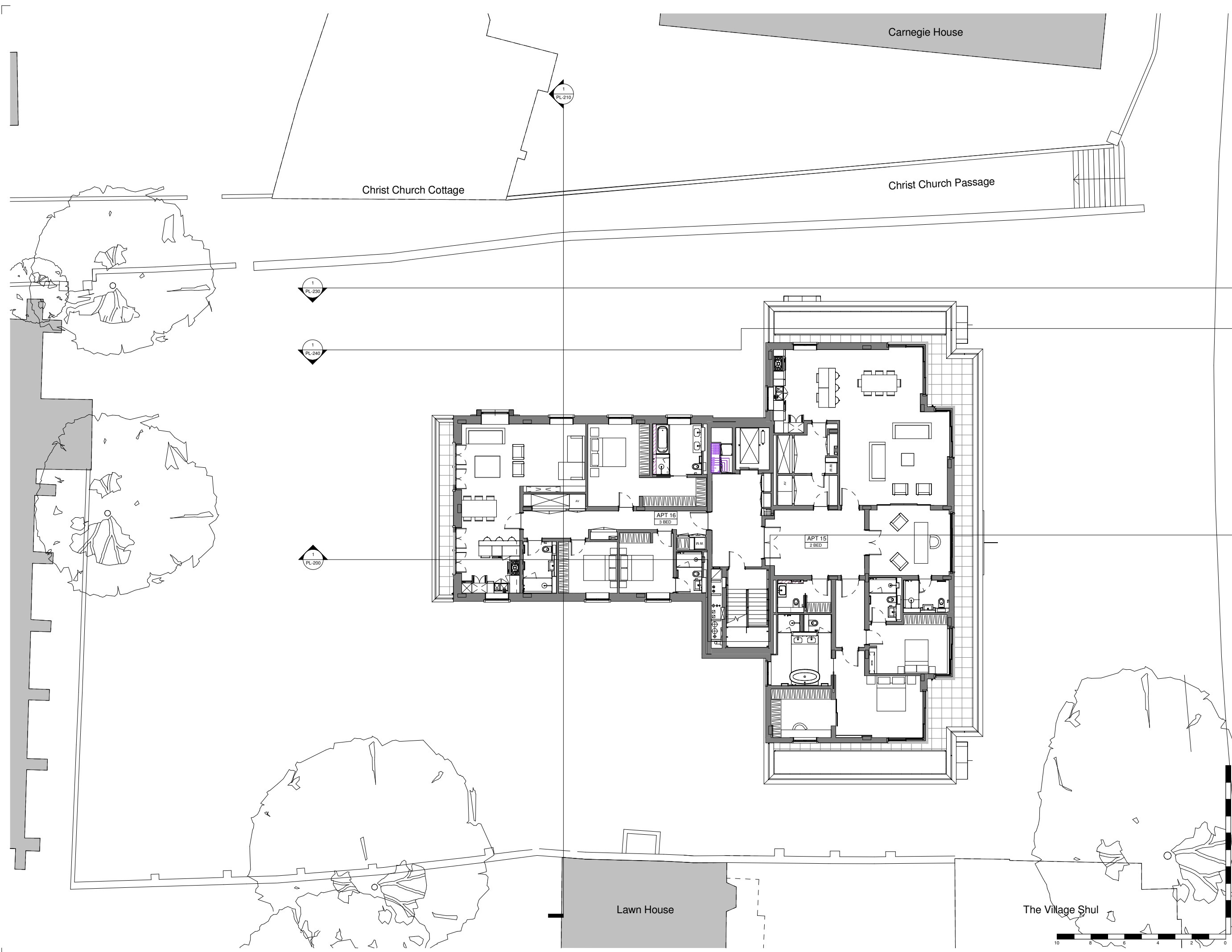
Notes/Legends

J Drawing Revised for MMA Application		25 Aug 17	SAS
Rev	Description	Date	Chkd
© KSR architects			
Stamp			
MMA Application			
Key Plan			
KSRARCHITECTS			
KSR Architects LLP 14 Grosvenor Street London W1V 6HD t: +44 (0)20 7882 5000 e: info@ksrarchitects.com w: www.ksrarchitects.com			
Project: 29 NEW END			
Title: Proposed Second Floor			
Date:	Aug 2017	Drawn By:	KSR
Scale:	1:100 @ A1	Status:	Planning
Project Ref:	NEN	Drawing No:	NEN - PL-120
		Checked:	SAS
		Revision:	J



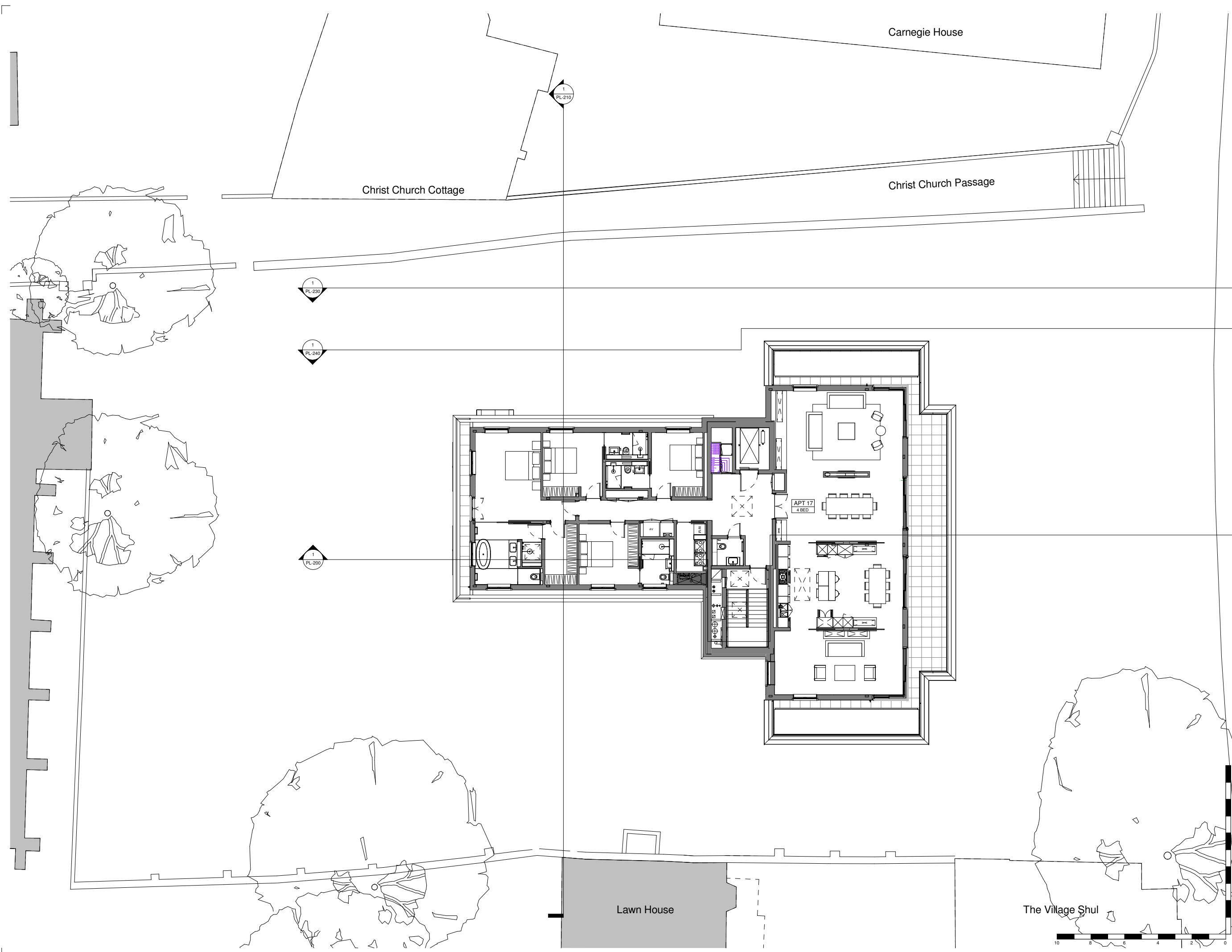
General notes:
This drawing is copyright of KSR architects. This drawing must be read in conjunction with the Designer's Risk Assessment, specification and all other relevant documentation and drawings. KSR architects accept no liability for any expense, loss or damage of whatsoever nature and however arising from any variation made to this drawing or in the execution of the work to which it relates which has not been referred to them and their approval obtained.
Do not scale from this drawing or the digital data, only figured dimensions are to be used. For Planning refer to linear scale.
Check all dimensions on site prior to carrying out any works – advise of any discrepancy
Notes/Legends

J Drawing Revised for MMA Application		25 Aug 17 SAS	
Rev	Description	Date	Chkd
© KSR architects			
Stamp			
MMA Application			
Key Plan			
KSRARCHITECTS KSR Architects LLP 14 Gower Street London WC1E 6BD info@ksrarchitects.com t +44 (0)20 7882 5000 www.ksrarchitects.com			
Project: 29 NEW END			
Title: Proposed Third Floor			
Date:	Aug 2017	Drawn By:	KSR
Scale:	1:100 @ A1	Status:	Planning
Project Ref:	NEN	Drawing No:	NEN - PL-130
		Checked:	SAS
		Revision:	J



General notes:
This drawing is copyright of KSR architects. This drawing must be read in conjunction with the Designer's Risk Assessment, specification and all other relevant documentation and drawings. KSR architects accept no liability for any expense, loss or damage of whatsoever nature and however arising from any variation made to this drawing or in the execution of the work to which it relates which has not been referred to them and their approval obtained.
Do not scale from this drawing or the digital data, only figured dimensions are to be used. For Planning refer to linear scale.
Check all dimensions on site prior to carrying out any works – advise of any discrepancy
Notes/Legends

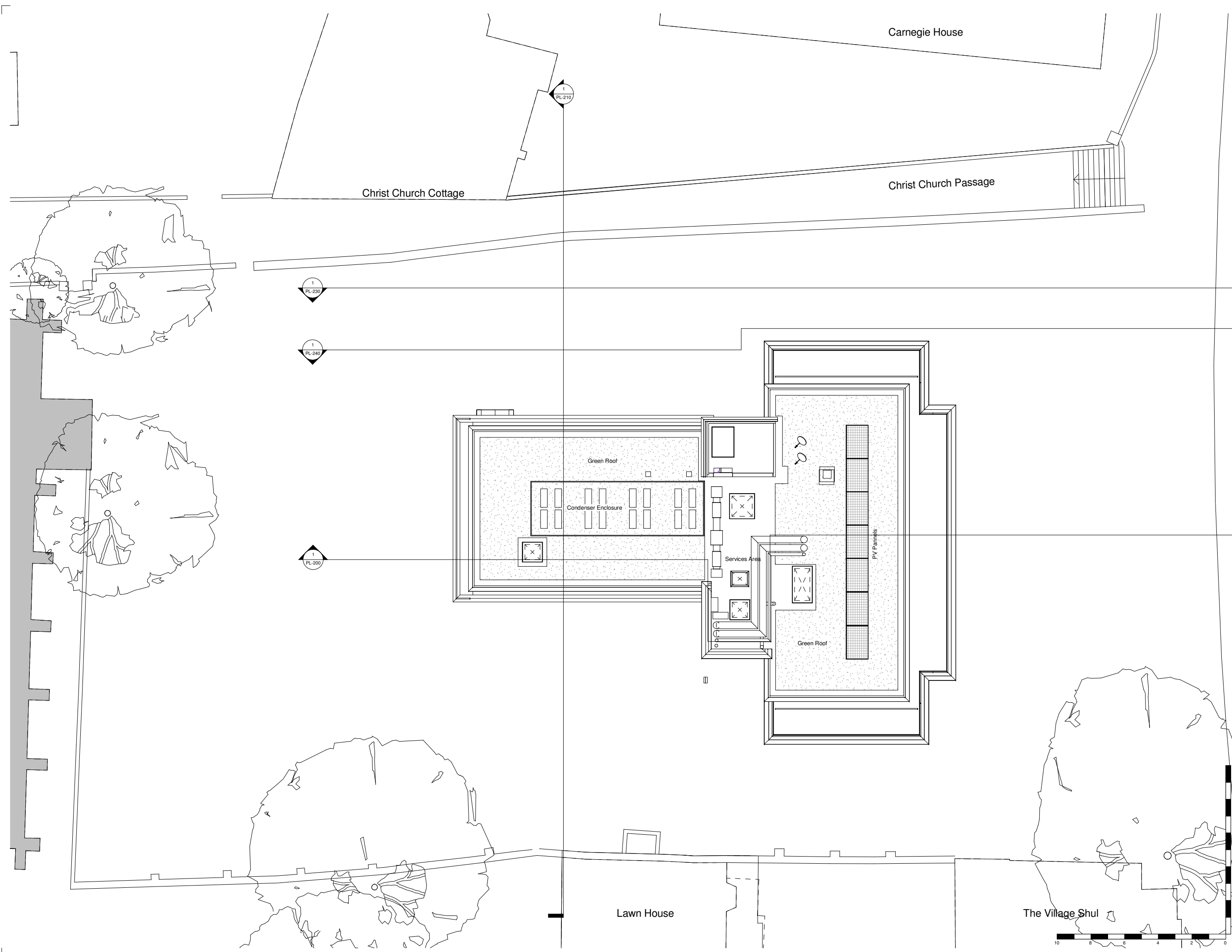
J Drawing Revised for MMA Application		25 Aug 17 SAS	
Rev	Description	Date	Chkd
© KSR architects			
Stamp			
MMA Application			
Key Plan			
KSRARCHITECTS KSR Architects LLP 14 Gower Street London WC1E 6BD t: +44 (0)20 7882 5000 m: +44 (0)7882 5000 www.ksrarchitects.com			
Project: 29 NEW END			
Title: Proposed Fourth Floor			
Date:	Aug 2017	Drawn By:	KSR
Scale:	1:100 @ A1	Status:	Planning
Project Ref:	NEN	Drawing No:	NEN - PL-140
		Checked:	SAS
		Revision:	J



General notes:
This drawing is copyright of KSR architects. This drawing must be read in conjunction with the Designer's Risk Assessment, specification and all other relevant documentation and drawings. KSR architects accept no liability for any expense, loss or damage of whatsoever nature and however arising from any variation made to this drawing or in the execution of the work to which it relates which has not been referred to them and their approval obtained.
Do not scale from this drawing or the digital data, only figured dimensions are to be used. For Planning refer to linear scale.
Check all dimensions on site prior to carrying out any works – advise of any discrepancy

- Notes/Legends
- Legend**
- External Materials Schedule**
- A Brickwork
 - B Slate
 - C Stone Surround
 - D Stone Faced Balcony
 - E Projecting Stone Faced Balcony
 - F Bronze Finish Surround
 - G PPC Aluminium Glazing
 - H PPC Metal Balustrade with Timber Handrail
 - I Metal Balustrade

J Drawing Revised for MMA Application		25 Aug 17	SAS
Rev	Description	Date	Chkd
© KSR architects			
Stamp			
MMA Application			
Key Plan			
KSRARCHITECTS KSR Architects LLP 14 Gower Street London WC1E 6BD t +44 (0)20 7882 5000 m info@ksrarchitects.com w www.ksrarchitects.com			
Project: 29 NEW END			
Title: Proposed Fifth Floor			
Date: Aug 2017	Drawn By: KSR	Checked: SAS	
Scale: 1:100 @ A1	1:200 @ A3	Status: Planning	
Project Ref: NEN	Drawing No: NEN - PL-150	Revision: J	



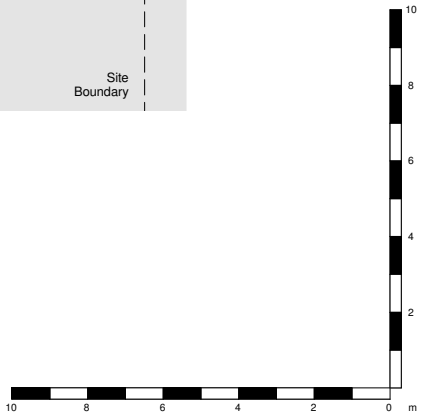
General notes:
This drawing is copyright of KSR architects. This drawing must be read in conjunction with the Designer's Risk Assessment, specification and all other relevant documentation and drawings. KSR architects accept no liability for any expense, loss or damage of whatsoever nature and however arising from any variation made to this drawing or in the execution of the work to which it relates which has not been referred to them and their approval obtained.
Do not scale from this drawing or the digital data, only figured dimensions are to be used. For Planning refer to linear scale.
Check all dimensions on site prior to carrying out any works – advise of any discrepancy

Notes/Legends

J Drawing Revised for MMA Application		25 Aug 17 SAS	
Rev	Description	Date	Chkd
© KSR architects			
Stamp			
MMA Application			
Key Plan			
KSRARCHITECTS KSR Architects LLP 14 Gower Street London WC1E 6BD t +44 (0)20 7882 5000 m info@ksrarchitects.com w www.ksrarchitects.com			
Project: 29 NEW END			
Title: Proposed Roof Plan			
Date:	Aug 2017	Drawn By:	KSR
Scale:	1:100 @ A1	Status:	Planning
Project Ref:	NEN	Drawing No:	NEN - PL-160
		Checked:	SAS
		Revision:	J



- Level Roof
133755
- Level 5 Fifth Floor
130180
- Level 4 Fourth Floor
126805
- Level 3 Third Floor
123430
- Level 2 Second FFL
120055
- Level 1 First FFL
116680
- Level 0 Ground Floor
113305
- Level -1 Basement
109930



General notes:

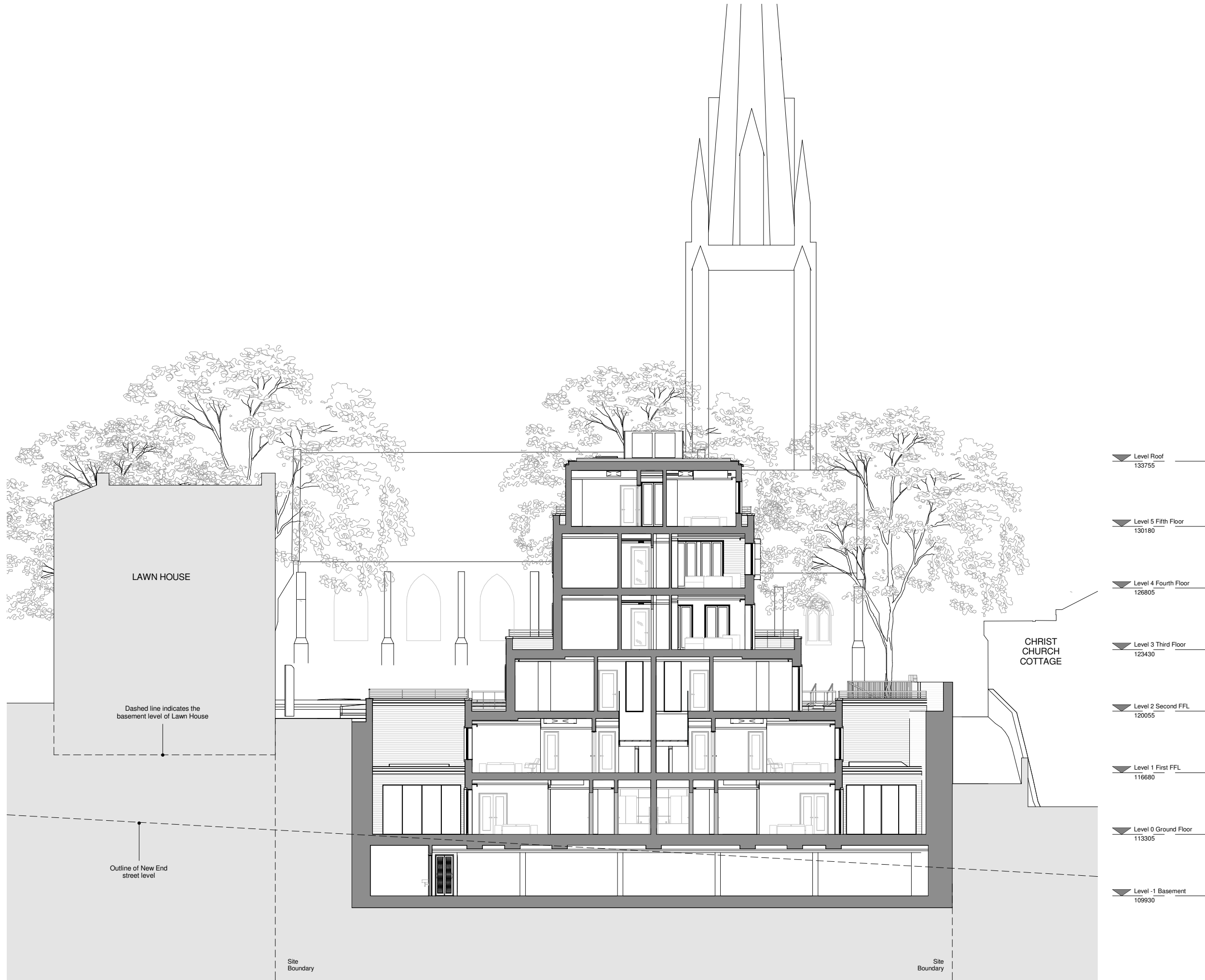
This drawing is copyright of KSR architects. This drawing must be read in conjunction with the Designer's Risk Assessment, specification and all other relevant documentation and drawings. KSR architects accept no liability for any expense, loss or damage of whatsoever nature and however arising from any variation made to this drawing or in the execution of the work to which it relates which has not been referred to them and their approval obtained.

Do not scale from this drawing or the digital data, only figured dimensions are to be used. For Planning refer to linear scale.

Check all dimensions on site prior to carrying out any works – advise of any discrepancy

Notes/Legends

J	Drawing Revised for MMA Application	25 Aug 17	SAS
Rev	Description	Date	Chkd
© KSR architects			
Stamp			
MMA Application			
Key Plan			
KSRARCHITECTS			
KSR Architects LLP 14 Grosvenor Street London W1W 6ND t +44 (0)20 7882 5000 info@ksrarchitects.com www.ksrarchitects.com			
Project: 29 NEW END			
Title: Proposed Section AA			
Date:	Aug 2017	Drawn By/Author	Checked: SAS
Scale:	1:100 @ A1 1:200@A3	Status: Planning	
Project Ref:	Drawing No:	Revision:	
NEN	NEN - PL-200	J	



General notes:
This drawing is copyright of KSR architects. This drawing must be read in conjunction with the Designer's Risk Assessment, specification and all other relevant documentation and drawings. KSR architects accept no liability for any expense, loss or damage of whatsoever nature and however arising from any variation made to this drawing or in the execution of the work to which it relates which has not been referred to them and their approval obtained.
Do not scale from this drawing or the digital data, only figured dimensions are to be used. For Planning refer to linear scale.
Check all dimensions on site prior to carrying out any works – advise of any discrepancy

Notes/Legends

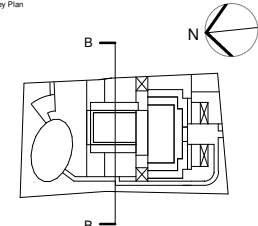
J Drawing Revised for MMA Application 25 Aug 17 SAS

Rev	Description	Date	Chkd
1	© KSR architects		

Stamp

MMA Application

Key Plan



KSRARCHITECTS
KSR Architects LLP
14 Gower Street
London WC1E 6BD
t +44 (0)20 7882 5000
info@ksrarchitects.com
www.ksrarchitects.com

Project:
29 NEW END

Title:
Proposed Section BB

Date:	Aug 2017	Drawn By:	KSR	Checked:	SAS
Scale:	1:100 @ A1	1:200 @ A3	Status:		
Project Ref:	NEN	Drawing No:	NEN - PL-210	Revision:	J



General notes:
This drawing is copyright of KSR architects. This drawing must be read in conjunction with the Designer's Risk Assessment, specification and all other relevant documentation and drawings. KSR architects accept no liability for any expense, loss or damage of whatsoever nature and however arising from any variation made to this drawing or in the execution of the work to which it relates which has not been referred to them and their approval obtained.
Do not scale from this drawing or the digital data, only figured dimensions are to be used. For Planning refer to linear scale.
Check all dimensions on site prior to carrying out any works – advise of any discrepancy
Notes/Legends

- Level Roof 133755
- Level 5 Fifth Floor 130180
- Level 4 Fourth Floor 126805
- Level 3 Third Floor 123430
- Level 2 Second FFL 120055
- Level 1 First FFL 116680
- Level 0 Ground Floor 113305
- Level -1 Basement 109930

Dashed line indicates the level beyond of the sloping site

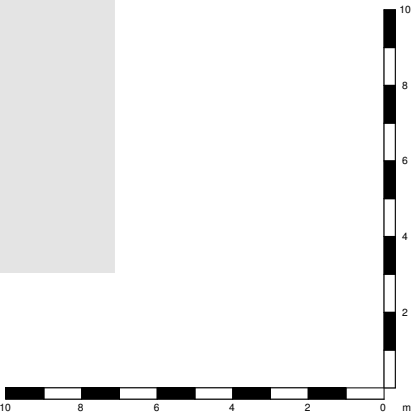
Outline of New End street level

Dashed line indicates the basement level of Lawn House

Dashed line indicates the basement level of New End Theatre beyond

Site Boundary

Site Boundary



J Drawing Revised for MMA Application		25 Aug 17	SAS
Rev	Description	Date	Chkd
© KSR architects			
Stamp			
MMA Application			
Key Plan			
KSRARCHITECTS			
KSR Architects LLP 14 New End Street London W1W 6ND t +44 (0)20 7882 5000 info@ksrarchitects.com www.ksrarchitects.com			
Project: 29 NEW END			
Title: Proposed Section CC			
Date:	Aug 2017	Drawn By:	KSR
Scale:	1:100 @ A1	1:200 @ A3	Status:
Project Ref:	NEN	Drawing No:	NEN - PL-220
		Checked:	SAS
		Revision:	J



Level Roof
133755

Level 5 Fifth Floor
130180

Level 4 Fourth Floor
126805

Level 3 Third Floor
123430

Level 2 Second FFL
120055

Level 1 First FFL
116680

Level 0 Ground Floor
113305

Level -1 Basement
109930

General notes:

This drawing is copyright of KSR architects. This drawing must be read in conjunction with the Designer's Risk Assessment, specification and all other relevant documentation and drawings. KSR architects accept no liability for any expense, loss or damage of whatsoever nature and however arising from any variation made to this drawing or in the execution of the work to which it relates which has not been referred to them and their approval obtained.

Do not scale from this drawing or the digital data, only figured dimensions are to be used. For Planning refer to linear scale.

Check all dimensions on site prior to carrying out any works – advise of any discrepancy

Notes/Legends

Legend

External Materials Schedule

- A Brickwork
- B Slate
- C Stone Surround
- D Stone Faced Balcony
- E Projecting Stone Faced Balcony
- F Bronze Finish Surround
- G PPC Aluminium Glazing
- H PPC Metal Balustrade with Timber Handrail
- I Metal Balustrade

J Drawing Revised for MMA Application 25 Aug 17 SAS

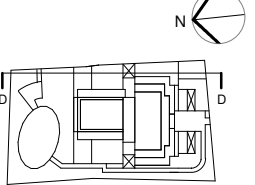
Rev Description Date Chkd

© KSR architects

Stamp

MMA Application

Key Plan



KSRARCHITECTS
KSR Architects LLP
14 Gower Street
London WC1E 6BD
t +44 (0)20 7882 5000
info@ksrarchitects.com
www.ksrarchitects.com

Project:
29 NEW END

Title:
Proposed Section DD

Date: Aug 2017 Drawn By: KSR Checked: SAS

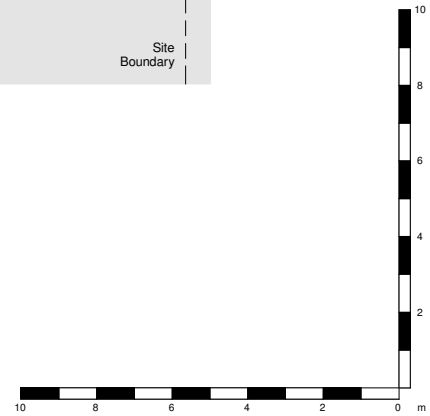
Scale: 1:100 @ A1 1:200 @ A3 Status:

Project Ref: Drawing No: Revision:

NEN NEN - PL-230 J



- Level Roof 133755
- Level 5 Fifth Floor 130180
- Level 4 Fourth Floor 126805
- Level 3 Third Floor 123430
- Level 2 Second FFL 120055
- Level 1 First FFL 116680
- Level 0 Ground Floor 113305
- Level -1 Basement 109930



General notes:
This drawing is copyright of KSR architects. This drawing must be read in conjunction with the Designer's Risk Assessment, specification and all other relevant documentation and drawings. KSR architects accept no liability for any expense, loss or damage of whatsoever nature and however arising from any variation made to this drawing or in the execution of the work to which it relates which has not been referred to them and their approval obtained.
Do not scale from this drawing or the digital data, only figured dimensions are to be used. For Planning refer to linear scale.
Check all dimensions on site prior to carrying out any works – advise of any discrepancy
Notes/Legends

J Drawing Revised for MMA Application		25 Aug 17	SAS
Rev	Description	Date	Chkd
© KSR architects			
Stamp			
MMA Application			
Key Plan			
KSRARCHITECTS			
KSR Architects LLP 14 Gower Street London WC1E 6BD t +44 (0)20 7882 5000 info@ksrarchitects.com www.ksrarchitects.com			
Project: 29 NEW END			
Title: Proposed Section EE			
Date:	Aug 2017	Drawn By:	KSR
Scale:	1:100 @ A1	1:200 @ A3	Status:
Project Ref:	NEN	Drawing No:	NEN - PL-240
		Checked:	SAS
		Revision:	J



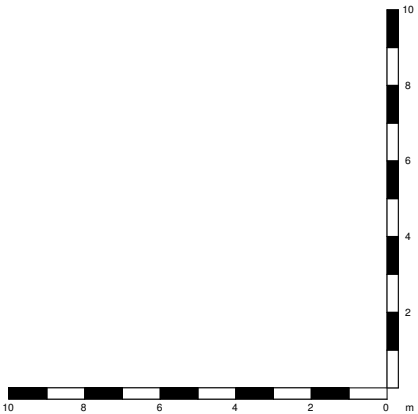
General notes:
This drawing is copyright of KSR architects. This drawing must be read in conjunction with the Designer's Risk Assessment, specification and all other relevant documentation and drawings. KSR architects accept no liability for any expense, loss or damage of whatsoever nature and however arising from any variation made to this drawing or in the execution of the work to which it relates which has not been referred to them and their approval obtained.
Do not scale from this drawing or the digital data, only figured dimensions are to be used. For Planning refer to linear scale.
Check all dimensions on site prior to carrying out any works – advise of any discrepancy

- Notes/Legends
- Legend
- External Materials Schedule
- A Brickwork
 - B Slate
 - C Stone Surround
 - D Stone Faced Balcony
 - E Projecting Stone Faced Balcony
 - F Bronze Finish Surround
 - G PPC Aluminium Glazing
 - H PPC Metal Balustrade with Timber Handrail
 - I Metal Balustrade

J Drawing Revised for MMA Application		25 Aug 17	SAS
Rev	Description	Date	Chkd
© KSR architects			
Stamp			
MMA Application			
Key Plan			
KSRARCHITECTS KSR Architects LLP 14 Gower Street London WC1E 6BT t +44 (0)20 7882 5000 info@ksrarchitects.com www.ksrarchitects.com			
Project: 29 NEW END			
Title: Proposed South Elevations			
Date:	Aug 2017	Drawn By:	KSR
Scale:	1:100 @ A1	1:200 @ A3	Status: Planning
Project Ref:	NEN	Drawing No:	NEN - PL-300
		Revision:	J



Level Roof	133755
Level 5 Fifth Floor	130180
Level 4 Fourth Floor	126805
Level 3 Third Floor	123430
Level 2 Second FFL	120055
Level 1 First FFL	116680
Level 0 Ground Floor	113305
Level -1 Basement	109930



General notes:
This drawing is copyright of KSR architects. This drawing must be read in conjunction with the Designer's Risk Assessment, specification and all other relevant documentation and drawings. KSR architects accept no liability for any expense, loss or damage of whatsoever nature and however arising from any variation made to this drawing or in the execution of the work to which it relates which has not been referred to them and their approval obtained.
Do not scale from this drawing or the digital data, only figured dimensions are to be used. For Planning refer to linear scale.
Check all dimensions on site prior to carrying out any works – advise of any discrepancy

Notes/Legends

Legend

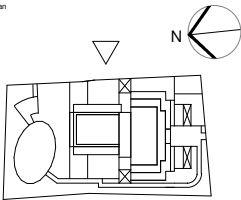
External Materials Schedule

A Brickwork
B Slate
C Stone Surround
D Stone Faced Balcony
E Projecting Stone Faced Balcony
F Bronze Finish Surround
G PPC Aluminium Glazing
H PPC Metal Balustrade with Timber Handrail
I Metal Balustrade

J	Drawing Revised for MMA Application	25 Aug 17	SAS
Rev	Description	Date	Chkd
© KSR architects			
Stamp			

MMA Application

Key Plan



KSRARCHITECTS
KSR Architects LLP
14 Grosvenor Street
London W1T 6ND
t +44 (0)20 7882 5000
info@ksrarchitects.com
www.ksrarchitects.com

Project:
29 NEW END

Title:
Proposed East Elevation

Date:	Aug 2017	Drawn By:	KSR	Checked:	SAS
Scale:	1:100 @ A1	1:200 @ A3	Status:		
Project Ref:	NEN	Drawing No:	NEN - PL-310	Revision:	J