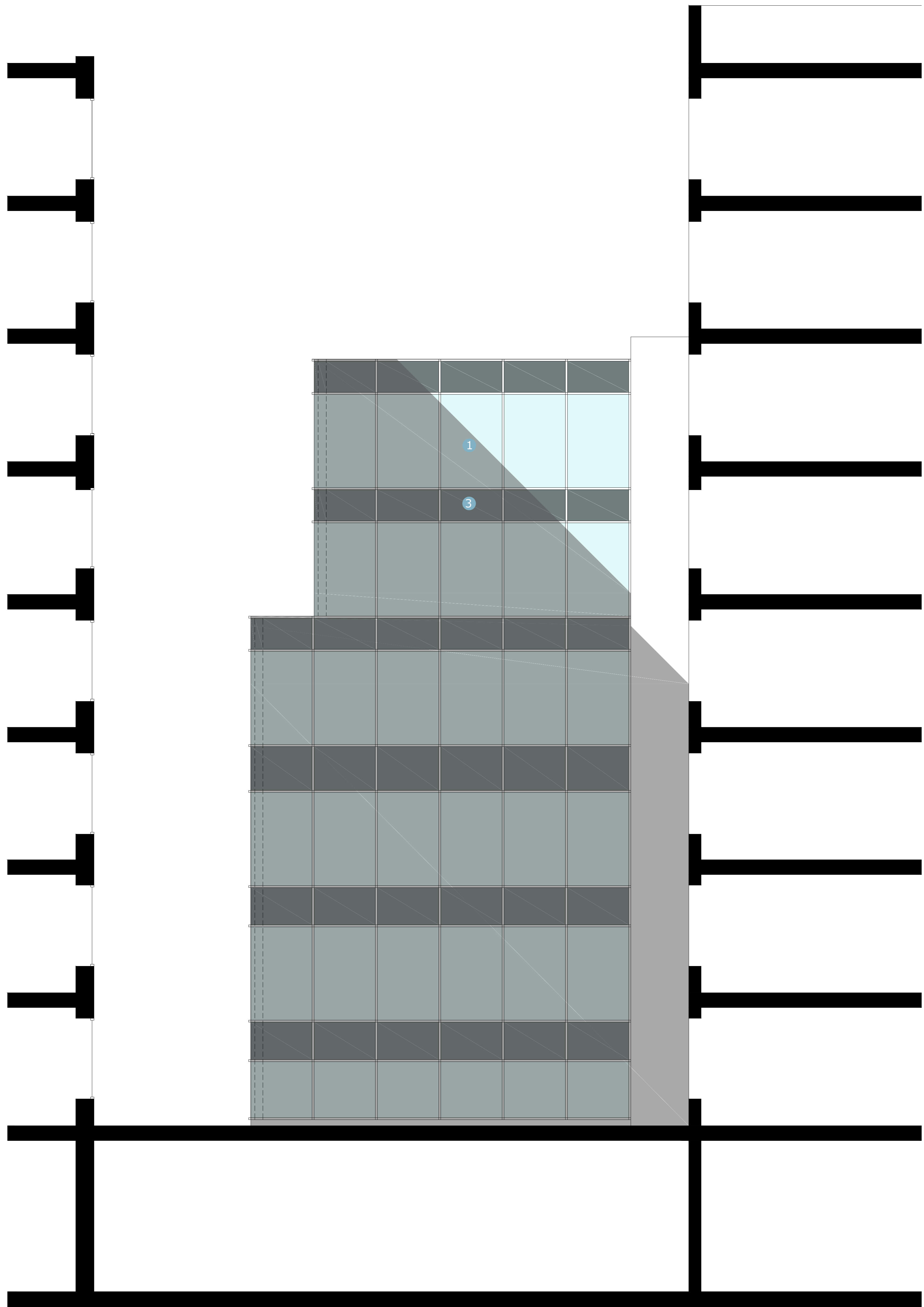


Health & Safety Notes
 1. Contractor must ensure that all work on site is carried out in a safe & satisfactory manner, in accordance with Health & Safety At Work Act 1974, COSHH Regulations 2002 & requirements of C.D.M



S1 212-214 High Holborn
 SIDE ELEVATION 1

SCALE 1 : 50
 SCALE 1 : 1

KEY TO MATERIALS

- ① ALUMINIUM CURTAIN WALLING COLOURED DARK GREY
- ② ALUMINIUM CLADDING SURROUND COLOURED DARK GREY
- ③ LOOK ALIKE SPANDREL PANELS
- ④ TERRACOTTA RAINSCREEN CLADDING COLOURED LIGHT GREY
- ⑤ ATMS TO BE REMOVED AND STONE MADE GOOD

Schedule of Accommodation

Level	GIA m2 (ft2)	Nett m2 (ft2)
Basement	429 (4,618)	326 (3,509)
Ground	416 (4,478)	342 (3,681)
Mezzanine	400 (4,305)	247 (2,659)
1st	400 (4,305)	306 (3,324)
2nd	400 (4,305)	278 (2,992)
3rd	402 (4,327)	281 (3,025)
4th	335 (3,606)	227 (2,443)
5th	335 (3,606)	227 (2,443)
Total	3117 (33,550)	2234 (24,047)

A	Existing chimneys updated	14/09/2017
P1	First Issue	21/04/2017
Rev.	Description	Date
Client		
Austringer Capital Ltd		
Project		
212-214 High Holborn		
Drawing Title		
Proposed Side Elevation 1		
Drawn by	JP	Checked by ND Date 21.04.2017
Status	PLANNING	Scale @ A1 1:50
Job no.	8918	Rev. A
Diag. no.	P19	
Architecture + Building Surveying + Town Planning		
7 East Cliff, Preston, Lancashire, PR1 3JE		01772 258 356
10 Hunters Walk, Canal Street, Chester, CH1 4EB		01244 402 200