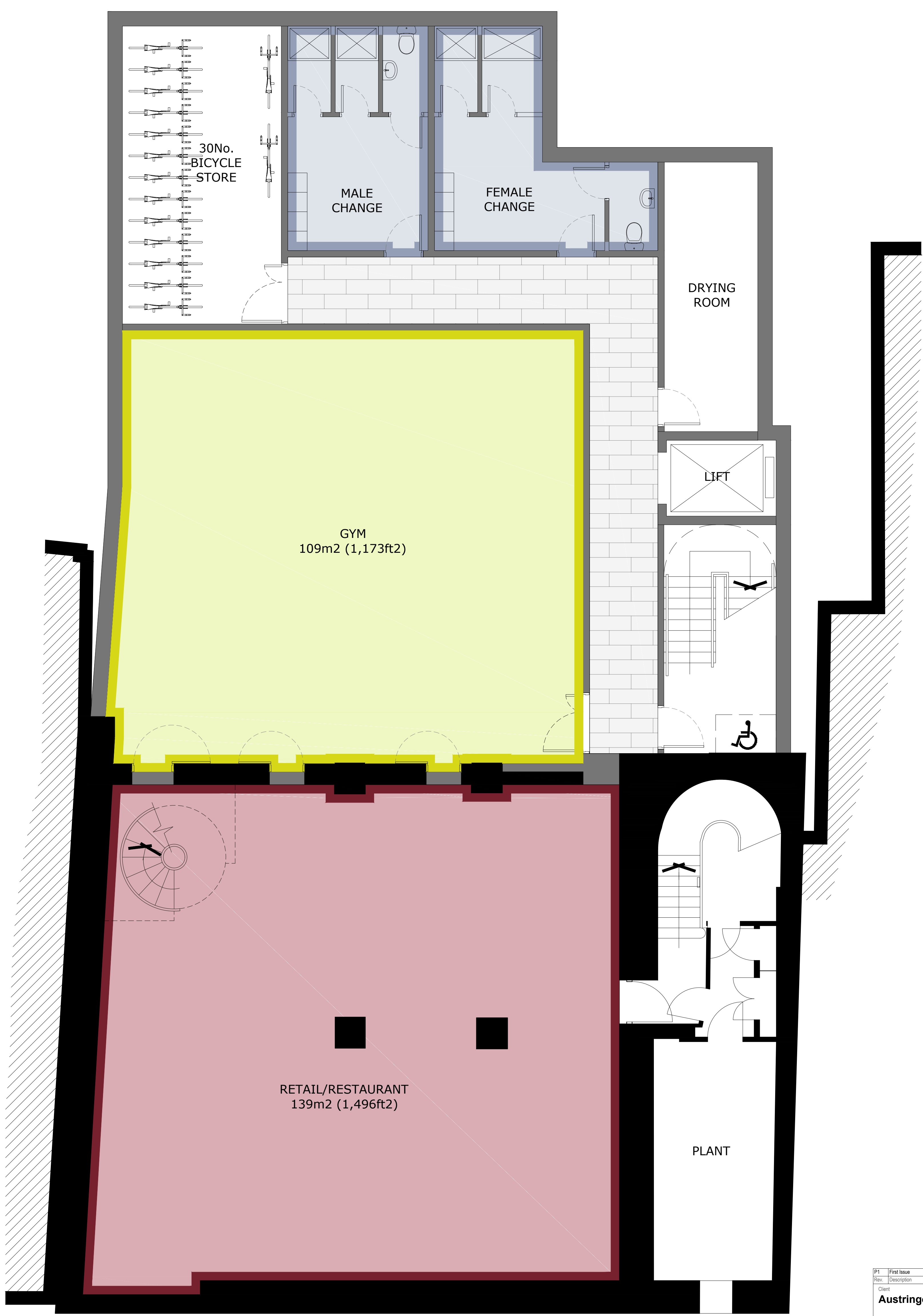
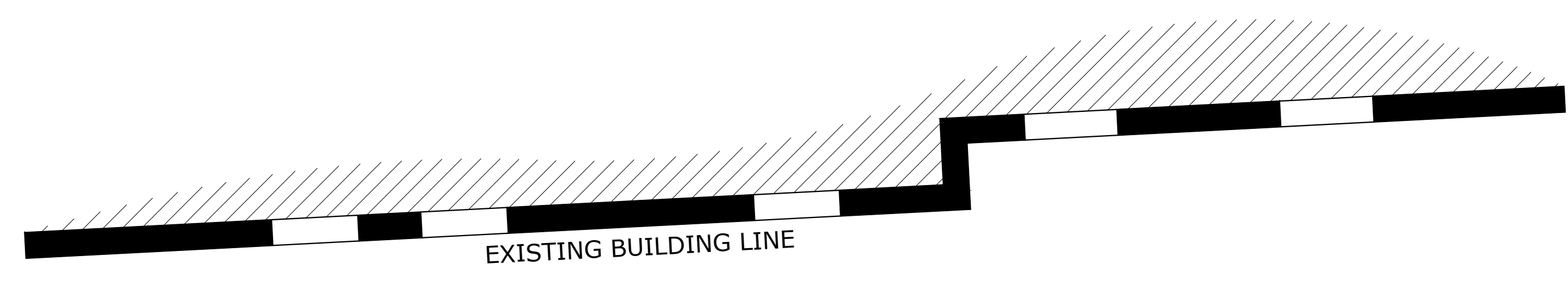


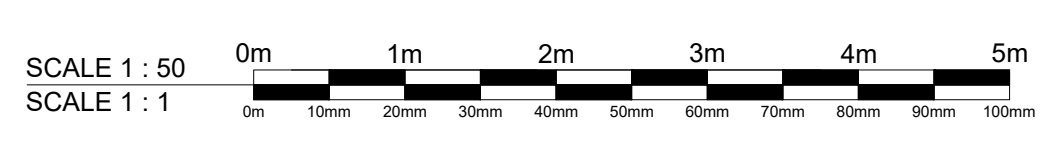
**Health & Safety Notes**  
 1. Contractor must ensure that all work on site is carried out in a safe & satisfactory manner, in accordance with Health & Safety At Work Act 1974, COSHH Regulations 2002 & requirements of C.D.M



**B** 212-214 High Holborn  
**BASEMENT LEVEL PLAN**

**Schedule of Accommodation**

Level	GIA m <sup>2</sup> (ft <sup>2</sup> )	Nett m <sup>2</sup> (ft <sup>2</sup> )
Basement	429 (4,618)	326 (3,509)
Ground	416 (4,478)	342 (3,681)
Mezzanine	400 (4,305)	247 (2,659)
1st	400 (4,305)	306 (3,324)
2nd	400 (4,305)	278 (2,992)
3rd	402 (4,327)	281 (3,025)
4th	335 (3,606)	227 (2,443)
5th	335 (3,606)	227 (2,443)
<b>Total</b>	<b>3117 (33,550)</b>	<b>2234 (24,047)</b>



P1	First Issue	21/04/2017
Rev.	Description	Date
Client <b>Austringer Capital Ltd</b>		
Project <b>212-214 High Holborn</b>		
Drawing Title <b>Proposed Basement Level Plan</b>		
Drawn by	JP	Checked by ND Date 21.04.2017
Status	<b>PLANNING</b>	Scale @ A1 1:50
Job no.	<b>8918</b>	Rev.
Diag. no.	<b>P11</b>	
<b>Cassidy+Ashton</b> C+A		
www.cassidyashton.co.uk		
Architecture + Building Surveying + Town Planning		
7 East Cliff, Preston, Lancashire, PR1 3JE		01772 258 356
10 Hunters Walk, Canal Street, Chester, CH1 4EB		01244 402 300