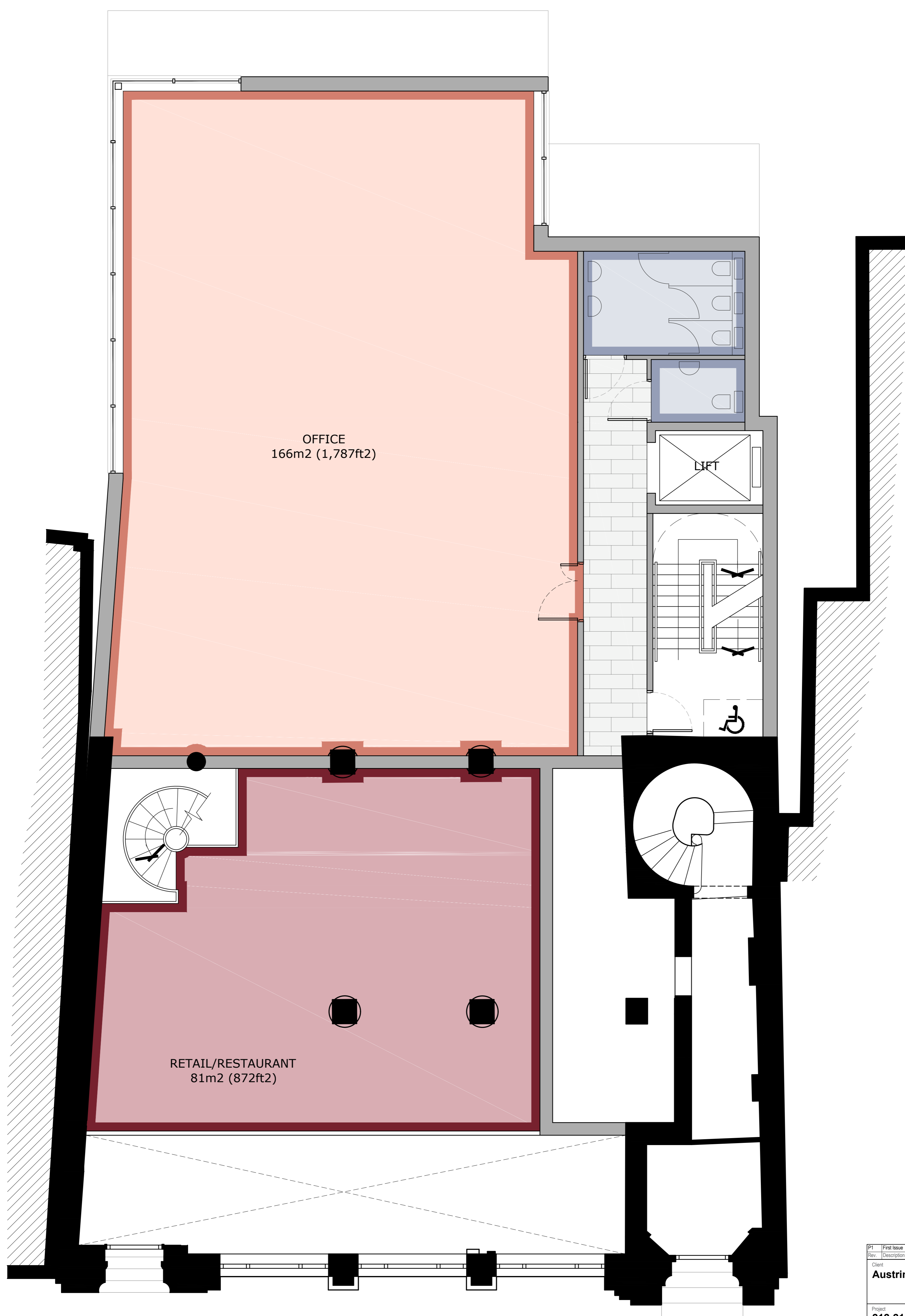
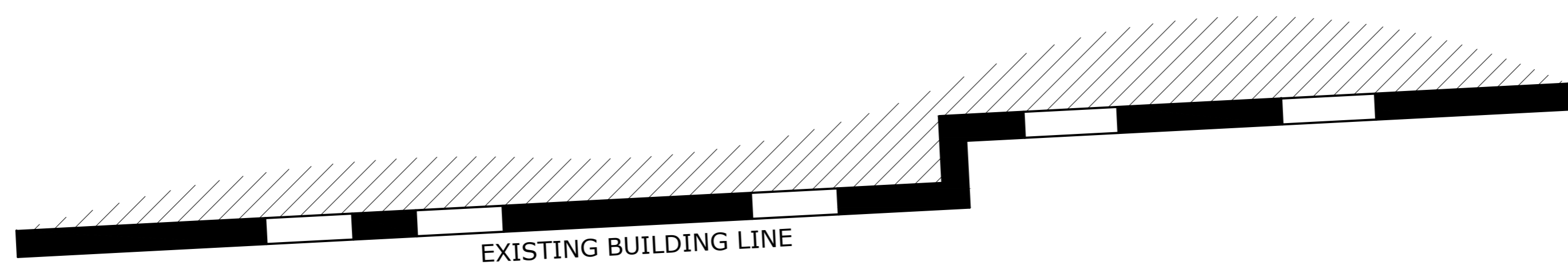


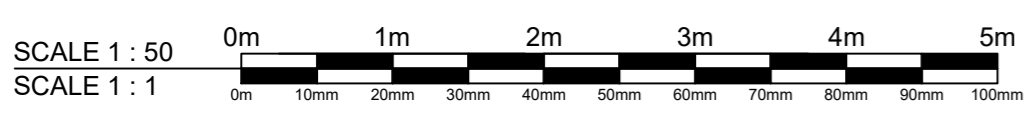
This drawing is subject to copyright and is not to be reproduced in part or whole without approval. Do not scale this drawing - check all dimensions on site.

Health & Safety Notes

1. Contractor must ensure that all work on site is carried out in a safe & satisfactory manner, in accordance with Health & Safety At Work Act 1974, COSHH Regulations 2002 & requirements of C.D.M



212-214 High Holborn
MEZZANINE LEVEL PLAN



Schedule of Accommodation

Level	GIA m2 (ft2)	Nett m2 (ft2)
Basement	429 (4,618)	326 (3,509)
Ground	416 (4,478)	342 (3,681)
Mezzanine	400 (4,305)	247 (2,659)
1st	400 (4,305)	306 (3,324)
2nd	400 (4,305)	278 (2,992)
3rd	402 (4,327)	281 (3,025)
4th	335 (3,606)	227 (2,443)
5th	335 (3,606)	227 (2,443)
Total	3117 (33,550)	2234 (24,047)

P1	First Issue	21/04/2017
Rev.	Description	Date
Client Austringer Capital Ltd		
Project 212-214 High Holborn		
Drawing Title Proposed Mezzanine Plan		
Drawn by	JP	Checked by ND Date 21.04.2017
Status	PLANNING	Scale @ A1 1:50
Job no.	8918	Dwg. no. P13 Rev.
Cassidy+Ashton www.cassidyashton.co.uk		
Architecture + Building Surveying + Town Planning		
7 East Cliff, Preston, Lancashire, PR1 3JE		01772 258 356
10 Hunters Walk, Canal Street, Chester, CH1 4EB		01244 402 900