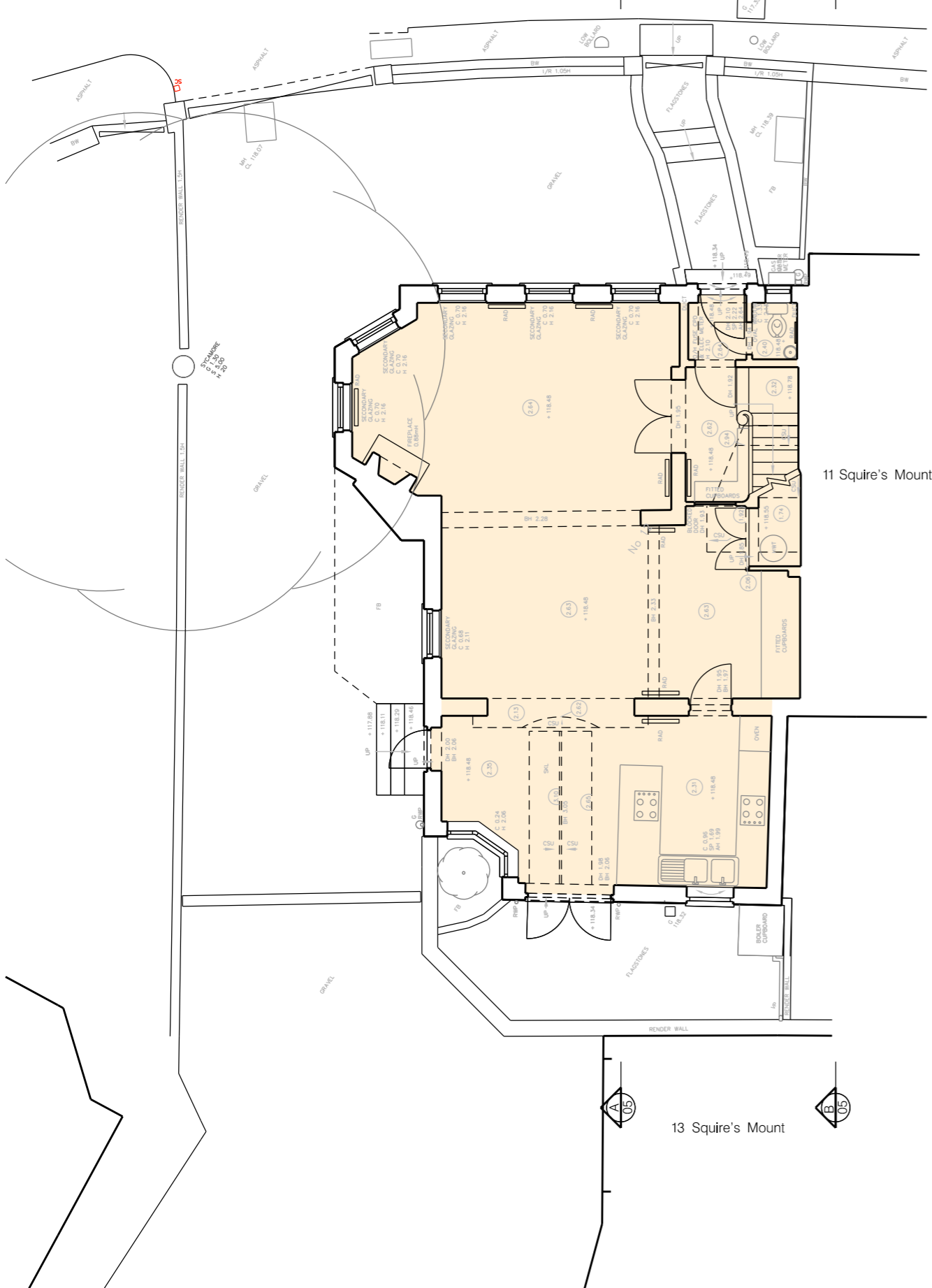


# SQUIRE'S MOUNT



11 Squire's Mount

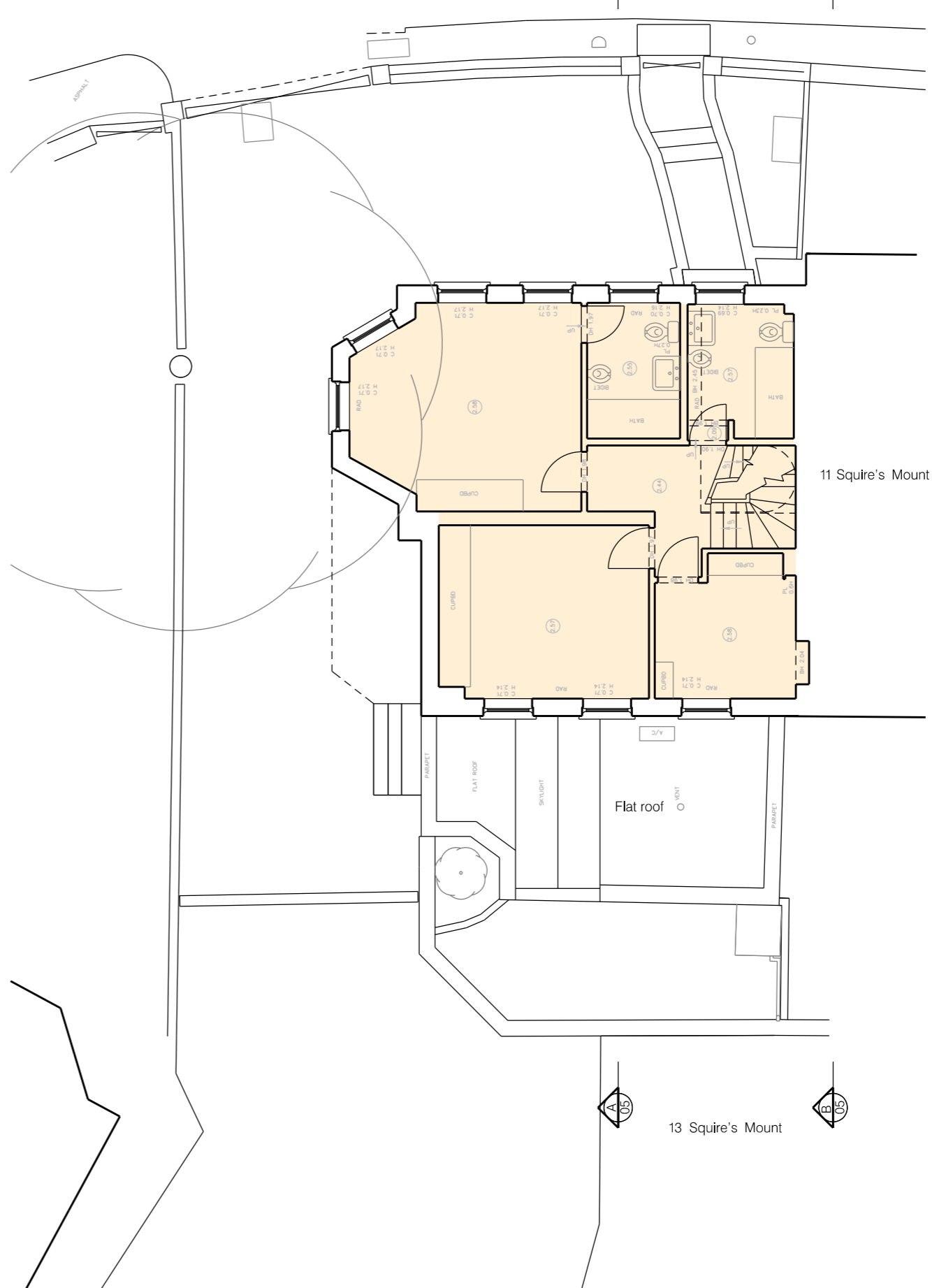


13 Squire's Mount

GROUND FLOOR

GIA - 76.6m<sup>2</sup>

# SQUIRE'S MOUNT



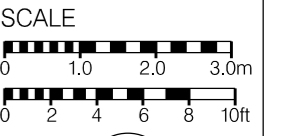
11 Squire's Mount



13 Squire's Mount

FIRST FLOOR

GIA - 55.5m<sup>2</sup>



NORTH

REV.	DESCRIPTION	DATE
PROJECT <b>12 SQUIRES MOUNT</b> HAMPSTEAD LONDON NW3 1ED		
DRAWING TITLE <b>EXISTING GROUND AND FIRST FLOOR PLANS</b>		
SCALE: 1:100 @ A3	DATE: OCTOBER 2017	
DRAWING NO.: 3192/P/02	REV.	
<small>The drawing is the Copyright of PRON Architects. Any copies in part or whole must be with the original author. These drawings are intended to be a guide only and are not to be used as a basis for construction. The drawings shall not be used for any other purpose without the written consent of PRON Architects.</small>		
50 BOROUGH HIGH STREET LONDON SE1 1LL TEL: 020 7407 3700 FAX: 020 7407 3800 www.pronarchitects.co.uk		
ARCHITECTS	DESIGNERS	PLANNERS