

LIGHTING CONTROL STRATEGY FOR OFFICES WITH FEATURE LED CIRCULAR PENDANT:
3 GANG MANUAL SWITCH.
GANG 1 – IN SERIES WITH MAINS PIR TO OPERATE SPOT LIGHTS GROUP 1 ON ABSENCE DETECTION
GANG 2 – IN SERIES WITH MAINS PIR TO OPERATE SPOT LIGHTS GROUP 1 ON ABSENCE DETECTION
GANG 3 – MOMENTARY DIMMABLE SWITCH TO OPERATE THE FEATURE PENDANT

RESIDUAL RISKS

1. THERE ARE NO FORESEEN SIGNIFICANT RISKS.

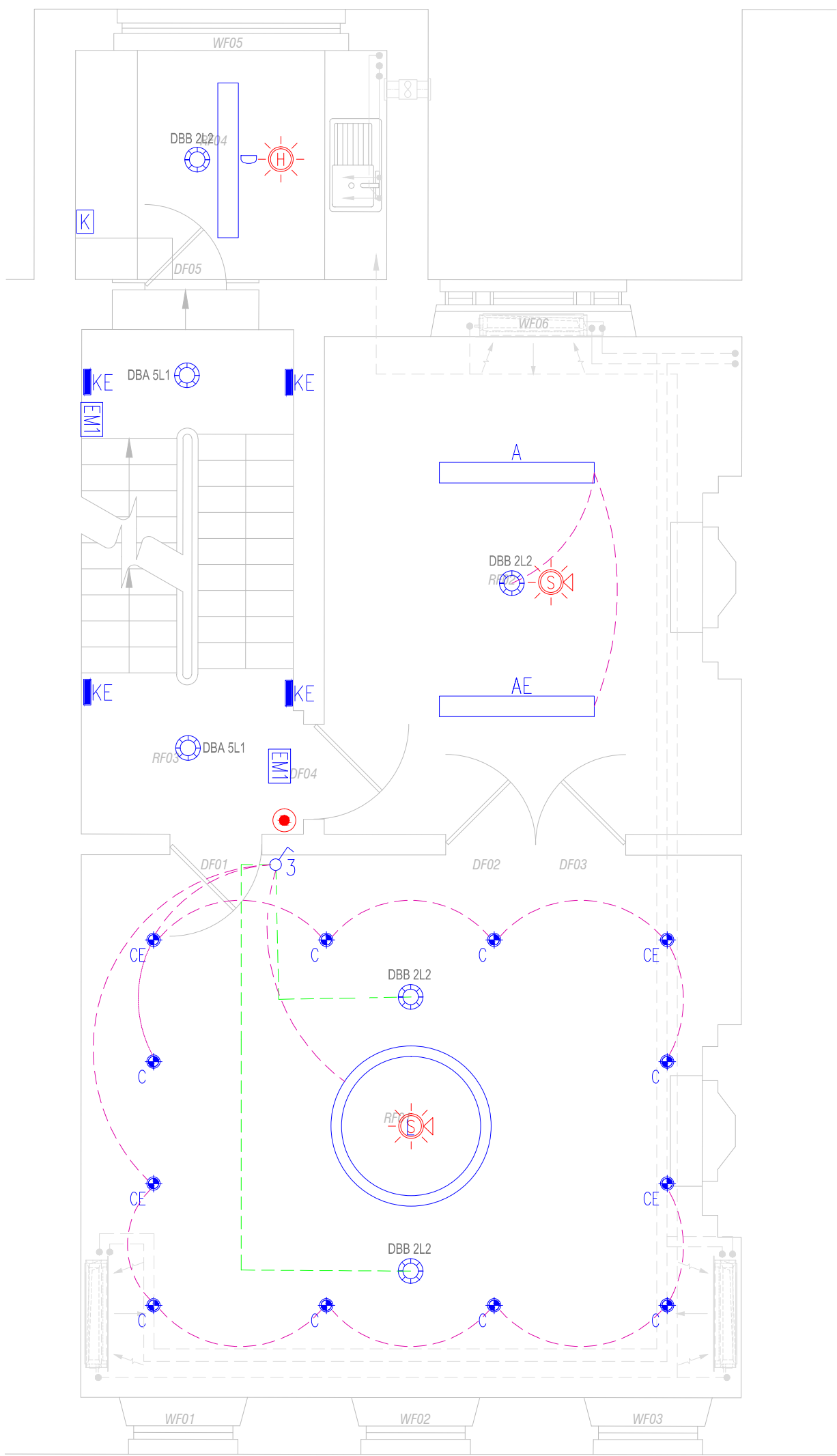


WARNING

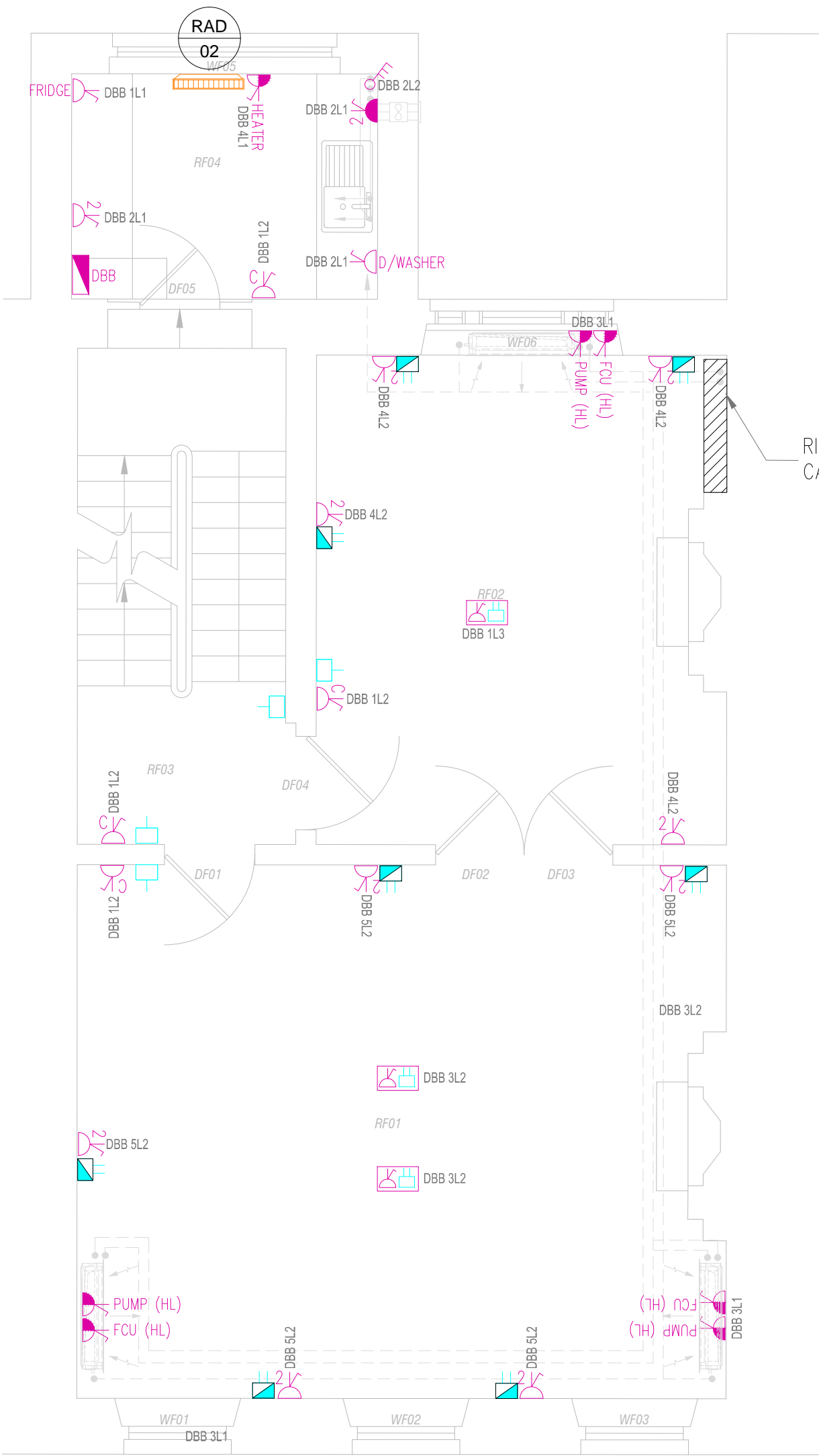
INFORMATION ON THIS DRAWING IS PRODUCED USING COLOURS IF DRAWING IS NOT PRINTED IN COLOUR VITAL INFORMATION MAY BE OBSCURED OR MISSING

ELECTRICAL DRAWING NOTES

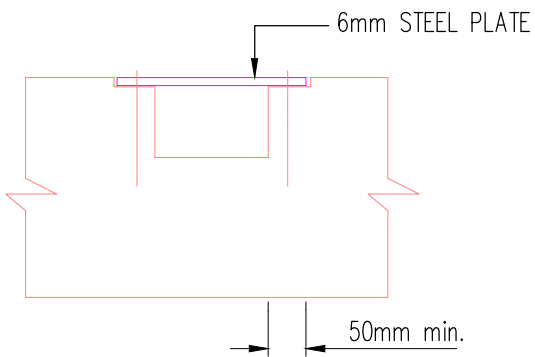
- ELECTRICAL INSTALLATION TO FULLY COMPLY WITH BS7671:2008.
- ALL CABLE ROUTES ARE INDICATIVE ONLY.
- ALL DRAWINGS ARE TO BE READ IN CONJUNCTION WITH THE SPECIFICATION.
- ALL ACCESSORIES TO BE AT LEAST 350mm FROM CORNERS TO ALLOW FOR DECORATING AND COMPLIANCE WITH PART M OF THE BUILDING REGULATIONS.
- CABLE ROUTES TO BE CO-ORDINATED WITH ALL OTHER SERVICES, STRUCTURE, BUILDING CONSTRUCTION ETC.
- ALL FINAL CONTAINMENT FROM THE MAIN CONTAINMENT RUNS SHALL BE SHOWN ON THE WORKING DRAWINGS AND AS BUILT DRAWINGS
- ALL CONTAINMENT BREACHES THROUGH FIRE COMPARTMENTS SHALL BE SUITABLY TREATED TO MAINTAIN THE INTEGRITY OF THE FIRE COMPARTMENT WALL. SEE THE FIRE STRATEGY DRAWING FOR INFORMATION ON FIRE COMPARTMENTS.
- THE DRAWING IS TO BE READ IN CONJUNCTION WITH THE MECHANICAL & ELECTRICAL SERVICES SPECIFICATION AND DRAWINGS.
- FIRE ALARM INSTALLATION TO COMPLY FULLY WITH BS5839 Pt 1 : 2013
- LIGHTING INSTALLATIONS TO COMPLY WITH THE CIBSE CODE FOR INTERIOR LIGHTING
- EMERGENCY LIGHTING TO COMPLY FULLY WITH BS5266:2011



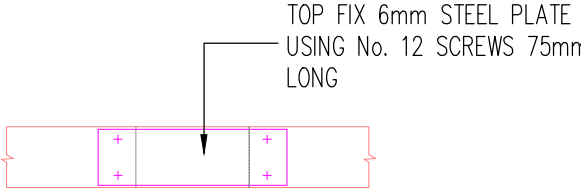
LIGHTING & FIRE ALARM



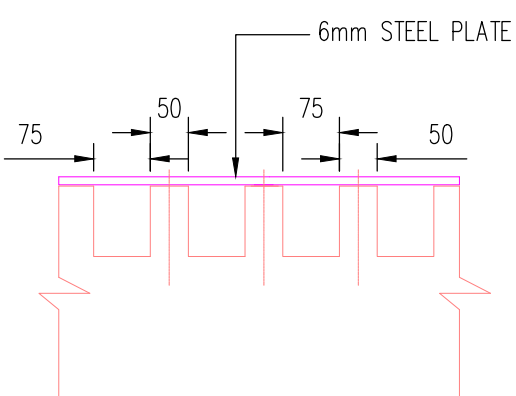
POWER, DATA & SECURITY



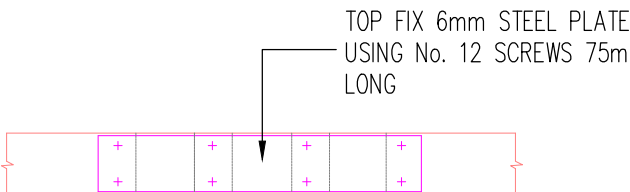
NOTCH REPAIR DETAIL 1
FOR NOTCHES UPTO 25mm DEEP & OVER SERVICES
(SCALE 1:10)



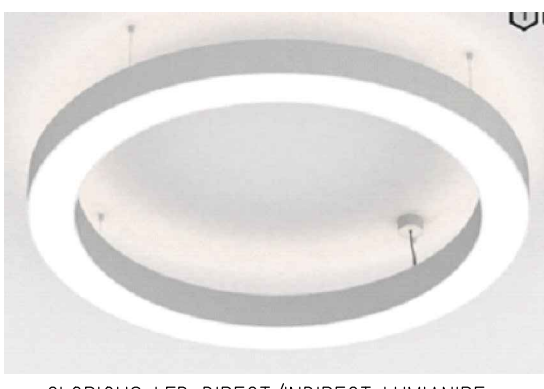
PLAN ON NOTCH REPAIR
(SCALE 1:10)



MULTI-NOTCH REPAIR DETAIL 2
FOR NOTCHES UPTO 25mm DEEP & OVER SERVICES
(SCALE 1:10)



PLAN ON MULTI-NOTCH REPAIR
(SCALE 1:10)



GLORIOUS LED DIRECT/INDIRECT LUMINAIRE



ADA LED EXTERNAL LUMINAIRE

LEGEND

A

SPACE LED' SUSPENDED LED LINEAR LUMINAIRE BY MID LIGHTING WITH UPLIGHTING. MOUNTED AT 0.5m BELOW CEILING. REF: SPACE 2 153 LED 6800-840 PW U-D

B

LED VAPORPROOF LED BATTEN LUMINAIRE BY QVIS: REF: NCF-1200NW. 3300 LUMENS

C

'FR-LED' FIRE RATED LED RECESSED DOWNLIGHT BY MID LIGHTING. IP65. 4000K CCT. GREY BEZEL

D

'SPACE LED' SUSPENDED LED LINEAR LUMINAIRE BY MID LIGHTING WITH UPLIGHTING. MOUNTED AT 0.5m BELOW CEILING. REF: SPACE 2 123 LED 840 PW U-D

E

DENOTES EMERGENCY VERSION OF LIGHT FITTING

F

'GLORIOUS' LED DIR./IND LED PENDANT BY PROLIGHT. REF: 410-1023 -03-01. 4000K CCT, OPAL DIFFUSER

G

'ADA LED' EXTERNAL UP/DOWNLIGHT BY MID LIGHTING. REF:MI/ADA/150/LED. 4000K CCT

H

'CONVEX' LED WALL MOUNTED AMENITY LUMINAIRE BY QVIS. C/W INTEGRAL SENSOR. REF: CON-350ECO-24NW/MS. CONTRACTOR TO CONFIRM PART CODE FOR SENSOR

K

LED WALL MOUNTED UP & DOWNLIGHTER BY TORNADO LIGHTING. REF: TR7226. 26W LED VERSION

L

'GLORIOUS' LED DIR./IND LED PENDANT BY PROLIGHT. REF: 410-1175-03 01. 4000K CCT, OPAL DIFFUSER. DALI DIMMABLE

PC

EXTERNAL DAYLIGHT PHOTOCELL

TI

EXTERNAL LIGHTING TIME SWITCH

K

EMERGENCY LIGHTING TEST KEY SWITCH FACILITY

RECESSED 230V PIR MOVEMENT SENSOR BY HAGER. FIRE HOODS APPLIED.

EM1

'MILEGEND' SURFACE MOUNTED 'ESCAPE LUMINAIRE BY MID LIGHTING

EM2

'FRONTIER' IP65 LED LUMINAIRE BY MID LIGHTING. C/W HOOD ATTACHMENT & EMERGENCY BATTERY PACK. 15W VERSION. 3000K CCT. MAINTAINED VERSION

MASTERSEAL 1 GANG, 1 WAY LIGHT SWITCH

MOMENTARY LIGHT SWITCH. No OF GANGS AS INDICATED. BRUSHED STAINLESS STEEL FINISH

FIRE ALARM SMOKE DETECTOR

FIRE ALARM SMOKE DETECTOR WITHIN VOID

FIRE ALARM SMOKE DETECTOR C/W STROBE

FIRE ALARM SMOKE DETECTOR C/W SOUNDER

FIRE ALARM SMOKE DETECTOR C/W SOUNDER & STROBE

FIRE ALARM HEAT DETECTOR

FIRE ALARM HEAT DETECTOR C/W SOUNDER & STROBE

FIRE ALARM SOUNDER & STROBE

FIRE

ADDRESSABLE FIRE ALARM PANEL FOR WIRELESS SYSTEM

R

LED INDICATOR

MANUAL CALL POINT

LEGEND

MAIN 100A TP&N CUT OUT WITH UTILITY METER

HAGER 'INVICTA' TPN DISTRIBUTION BOARD. C/W INTEGRAL METER

UN-SWITCHED FUSE CONNECTION UNIT (OPERATION AS SHOWN)

SWITCH FUSE CONNECTION UNIT C/W NEON INDICATOR. BRUSHED STAINLESS STEEL FACEPLATE WHEN VISIBLE

TRIPLE POLE ISOLATOR FOR FAN UNITS AT HIGH LEVEL

CLEANERS SOCKET OUTLET FULLY RECESSED AT LOW LEVEL. BRUSHED STAINLESS STEEL FACEPLATE

DOUBLE SWITCH SOCKET OUTLET FULLY RECESSED AT LOW LEVEL. BRUSHED STAINLESS STEEL FACEPLATE

DOUBLE SWITCH SOCKET OUTLET INSTALLED ON DADO TRUNKING/ABOVE WORKTOP. BRUSHED STAINLESS STEEL FACEPLATE

METAL CLAD DOUBLE SWITCH SOCKET OUTLET

SINGLE PHASE ISOLATOR – RATING AND OPERATION AS SHOWN

THREE PHASE ISOLATOR – RATING AND OPERATION AS SHOWN

MULTI-COMPARTMENT FLOOR RECESSED POWER/DATA BOX BY LE GRAND. INCLUDES 2 DOUBLE SOCKETS & 4 RJ-45'S

HD

WARNER HOWARD AIR FORCE 1.1KW HAND DRYER IN CHROME

SINGLE RJ45 VOICE & DATA OUTLET FULLY RECESSED AT LOW LEVEL. BRUSHED STAINLESS STEEL FACEPLATE

DOUBLE RJ45 VOICE & DATA OUTLET FULLY RECESSED AT LOW LEVEL. BRUSHED STAINLESS STEEL FACEPLATE

SINGLE RJ45 VOICE & DATA OUTLET FULLY RECESSED AT 1200mm AFFL. BRUSHED STAINLESS STEEL FACEPLATE

COMMS RACK

AC

ACCESS CONTROL POWER CONTROL CENTRE

ACCESS CONTROL DOOR RELEASE BUTTON

ACCESS CONTROL DOOR MAG LOCK

ACCESS CONTROL EMERGENCY EGRESS BREAK GLASS UNIT

HANDSET WITH INTEGRAL ACCESS PERMITTED BUTTON – EXACT POSITION TO BE AGREED.

FLUSH MOUNTED INTERCOM WITH INTEGRAL CARD READER. STAINLESS STEEL FINISH – POSITION TO BE AGREED

INTRUDER DETECTION PIR SENSOR

K

INTRUDER DETECTION FINAL EXIT / ENTRANCE KEY PAD

INTRUDER DETECTION EXTERNAL SOUNDER BEACON

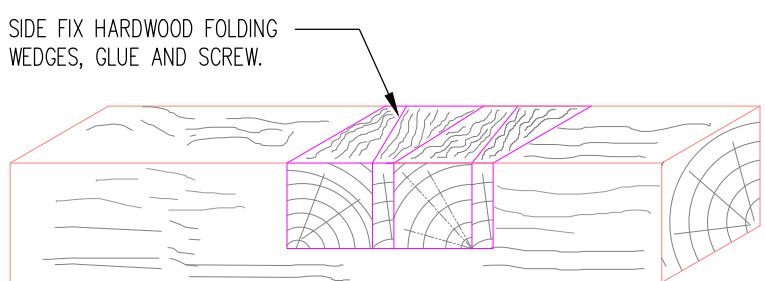
C

INTRUDER DETECTION DOOR CONTACTS

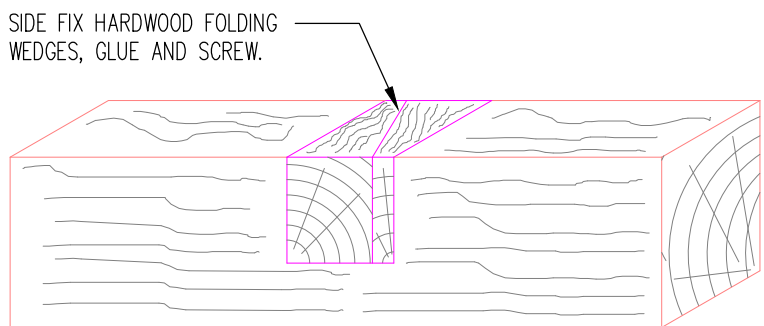
INT

INTRUDER DETECTION PANEL

ELECTRIC RADIATOR SCHEDULE						
ID	MAKE	MODEL	HEIGHT	LENGTH	DEPTH	OUTPUT
RAD-01	DIMPLEX GIRONA	GFP100W C/W RX24Ti CONTROL	565mm	700mm	107mm	1000W
RAD-02	DIMPLEX GIRONA	GFP050W C/W RX24Ti CONTROL	565mm	530mm	107mm	500W



NOTCH REPAIR DETAIL 1
FOR LONG NOTCH APPLICATIONS
FOR NOTCHES GREATER THAN 25mm DEEP
(SCALE 1:20)



NOTCH REPAIR DETAIL 2
FOR NOTCHES GREATER THAN 25mm DEEP
(SCALE 1:20)



FR LED DOWNLIGHTER



MILEGEND ESCAPE LIGHT



FRONTIER



TORNADO WALL LIGHT

P2	KM	x	ONGOING DESIGN DEVELOPMENT
P1	KM	20.09.17	PRELIMINARY ISSUE
Rev	Dwn	Date	Description

PURPOSE OF ISSUE

PRELIMINARY

CLIENT

THE BEDFORD ESTATES

SCHEME

81 GOWER STREET
LONDON

TITLE

ELECTRICAL SERVICES
FIRST FLOOR

© THIS DESIGN IS THE PROPERTY OF ITD CONSULTANTS LTD AND SHALL NOT BE REPRODUCED OR COPIED IN ANY WAY OR CONVEYED TO A THIRD PARTY WITHOUT THE OWNERS WRITTEN PERMISSION.

itd

CONSULTANTS

LOW|CARBONCONSULTANTS

ITD CONSULTANTS LTD
(ENGINEERING SERVICES)
Tel: 023 9243 5050
www.itdconsultants.co.uk
e-mail: eng@itdconsultants.co.uk

SCALE

1:50 @ A1

DATE

SEP. 2017

DRAWN BY

KM

CHECKED BY

ITD

DRAWING NO.

17/2469/E02

REVISION

P2