

LIGHTING & FIRE ALARM

- LEGEND
- A

'SPACE LED' SUSPENDED LED LINEAR LUMINAIRE BY MID LIGHTING WITH UPLIGHTING. MOUNTED AT 0.5m BELOW CEILING. REF: SPACE 2 153 LED 6800-840 PW U-D
- B

LED VAPORPROOF LED BATTEN LUMINAIRE BY QVIS. REF: NCF-1200NW. 3300 LUMENS
- C

'FR-LED' FIRE RATED LED RECESSED DOWNLIGHT BY MID LIGHTING. IP65. 4000K CCT. GREY BEZEL
- D

'SPACE LED' SUSPENDED LED LINEAR LUMINAIRE BY MID LIGHTING WITH UPLIGHTING. MOUNTED AT 0.5m BELOW CEILING. REF: SPACE 2 123 LED 840 PW U-D
- E

DENOTES EMERGENCY VERSION OF LIGHT FITTING
- F

'GLORIOUS' LED DIR./IND LED PENDANT BY PROLIGHT. REF: 410-1023 -03-01. 4000K CCT, OPAL DIFFUSER
- G

'ADA LED' EXTERNAL UP/DOWNLIGHT BY MID LIGHTING. REF:MI/ADA/150/LED. 4000K CCT
- H

'CONVEX' LED WALL MOUNTED AMENITY LUMINAIRE BY QVIS. C/W INTEGRAL SENSOR. REF: CON-350ECO-24NW/MS. CONTRACTOR TO CONFIRM PART CODE FOR SENSOR
- K

LED WALL MOUNTED UP & DOWNLIGHTER BY TORNADO LIGHTING. REF: TR7226. 26W LED VERSION
- L

'GLORIOUS' LED DIR./IND LED PENDANT BY PROLIGHT. REF: 410-1175-03 01. 4000K CCT, OPAL DIFFUSER. DALI DIMMABLE
- PE

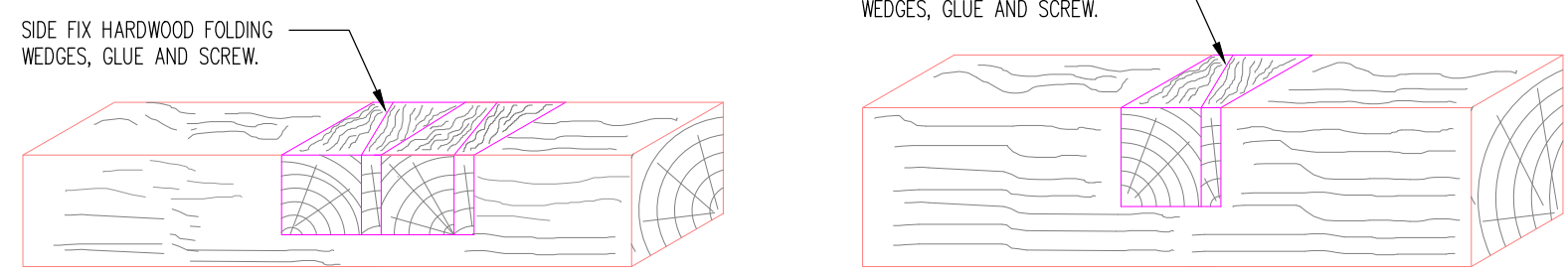
EXTERNAL DAYLIGHT PHOTOCELL
- T

EXTERNAL LIGHTING TIME SWITCH
- K

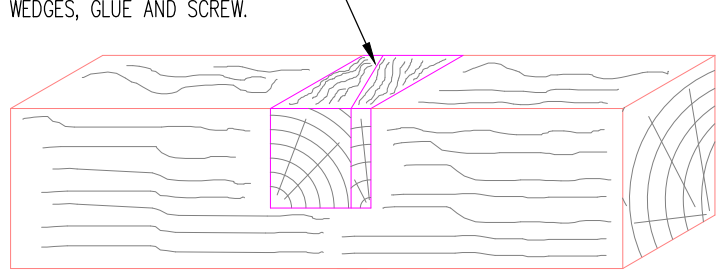
EMERGENCY LIGHTING TEST KEY SWITCH FACILITY
- RECESSED 230V PIR MOVEMENT SENSOR BY HAGER. FIRE HOODS APPLIED.
- EM1

'MILEGEND' SURFACE MOUNTED ESCAPE LUMINAIRE BY MID LIGHTING
- EM2

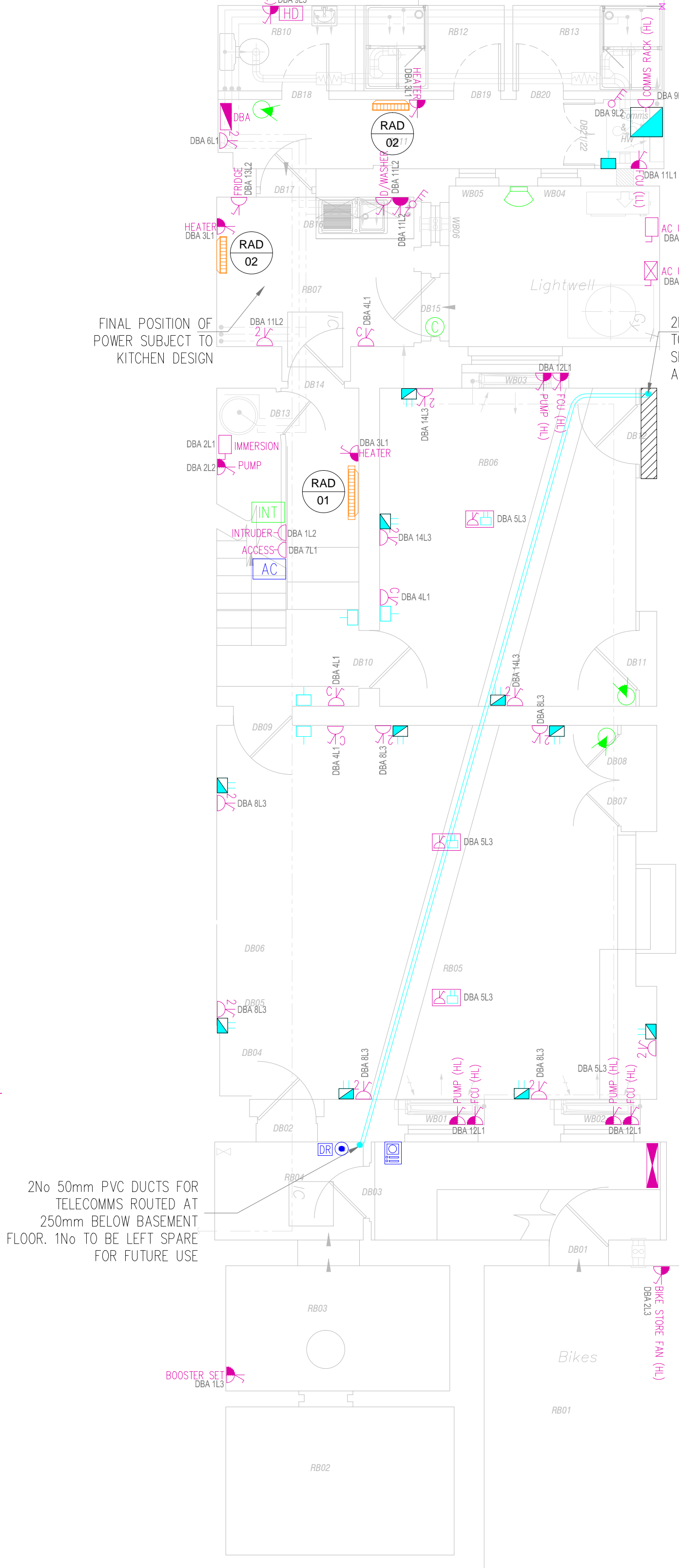
'FRONTIER' IP65 LED LUMINAIRE BY MID LIGHTING. C/W HOOD ATTACHMENT & EMERGENCY BATTERY PACK. 15W VERSION. 3000K CCT. MAINTAINED VERSION
- MASTERSEAL 1 GANG, 1 WAY LIGHT SWITCH
- MOMENTARY LIGHT SWITCH. No OF GANGS AS INDICATED. BRUSHED STAINLESS STEEL FINISH
- FIRE ALARM SMOKE DETECTOR
- FIRE ALARM SMOKE DETECTOR WITHIN VOID
- FIRE ALARM SMOKE DETECTOR C/W STROBE
- FIRE ALARM SMOKE DETECTOR C/W SOUNDER
- FIRE ALARM SMOKE DETECTOR C/W SOUNDER & STROBE
- FIRE ALARM HEAT DETECTOR
- FIRE ALARM HEAT DETECTOR C/W SOUNDER & STROBE
- FIRE ALARM SOUNDER & STROBE
- ADDRESSABLE FIRE ALARM PANEL FOR WIRELESS SYSTEM
- LED INDICATOR
- MANUAL CALL POINT



NOTCH REPAIR DETAIL 1  
FOR LONG NOTCH APPLICATIONS  
FOR NOTCHES GREATER THAN 25mm DEEP  
(SCALE 1:20)



NOTCH REPAIR DETAIL 2  
FOR NOTCHES GREATER THAN 25mm DEEP  
(SCALE 1:20)



POWER, DATA & SECURITY

- LEGEND
- MAIN 100A TP&N CUT OUT WITH UTILITY METER
- HAGER 'INVICTA' TPN DISTRIBUTION BOARD. C/W INTEGRAL METER
- UN-SWITCHED FUSE CONNECTION UNIT (OPERATION AS SHOWN)
- SWITCH FUSE CONNECTION UNIT C/W NEON INDICATOR. BRUSHED STAINLESS STEEL FACEPLATE WHEN VISIBLE
- TRIPLE POLE ISOLATOR FOR FAN UNITS AT HIGH LEVEL
- CLEANERS SOCKET OUTLET FULLY RECESSED AT LOW LEVEL. BRUSHED STAINLESS STEEL FACEPLATE
- DOUBLE SWITCH SOCKET OUTLET FULLY RECESSED AT LOW LEVEL. BRUSHED STAINLESS STEEL FACEPLATE
- DOUBLE SWITCH SOCKET OUTLET INSTALLED ON DADO TRUNKING/ABOVE WORKTOP. BRUSHED STAINLESS STEEL FACEPLATE
- METAL CLAD DOUBLE SWITCH SOCKET OUTLET
- SINGLE PHASE ISOLATOR - RATING AND OPERATION AS SHOWN
- THREE PHASE ISOLATOR - RATING AND OPERATION AS SHOWN
- MULTI-COMPARTMENT FLOOR RECESSED POWER/DATA BOX BY LE GRAND. INCLUDES 2 DOUBLE SOCKETS & 4 RJ-45'S
- WARNER HOWARD AIR FORCE 1.1kW HAND DRYER IN CHROME
- SINGLE RJ45 VOICE & DATA OUTLET FULLY RECESSED AT LOW LEVEL. BRUSHED STAINLESS STEEL FACEPLATE
- DOUBLE RJ45 VOICE & DATA OUTLET FULLY RECESSED AT LOW LEVEL. BRUSHED STAINLESS STEEL FACEPLATE
- SINGLE RJ45 VOICE & DATA OUTLET FULLY RECESSED AT 1200mm AFFL. BRUSHED STAINLESS STEEL FACEPLATE
- COMMS RACK
- ACCESS CONTROL POWER CONTROL CENTRE
- ACCESS CONTROL DOOR RELEASE BUTTON
- ACCESS CONTROL DOOR MAG LOCK
- ACCESS CONTROL EMERGENCY EGRESS BREAK GLASS UNIT
- HANDSET WITH INTEGRAL ACCESS PERMITTED BUTTON - EXACT POSITION TO BE AGREED.
- FLUSH MOUNTED INTERCOM WITH INTEGRAL CARD READER. STAINLESS STEEL FINISH - POSITION TO BE AGREED
- INTRUDER DETECTION PIR SENSOR
- INTRUDER DETECTION FINAL EXIT / ENTRANCE KEY PAD
- INTRUDER DETECTION EXTERNAL SOUNDER BEACON
- INTRUDER DETECTION DOOR CONTACTS
- INTRUDER DETECTION PANEL

RESIDUAL RISKS

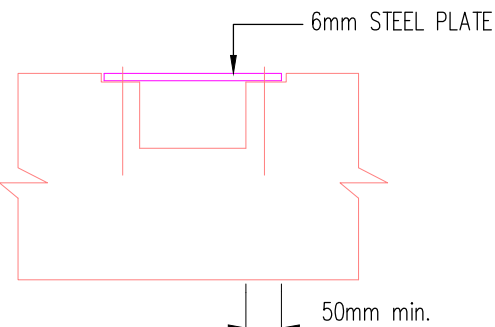
1. THERE ARE NO FORESEEN SIGNIFICANT RISKS.

## WARNING

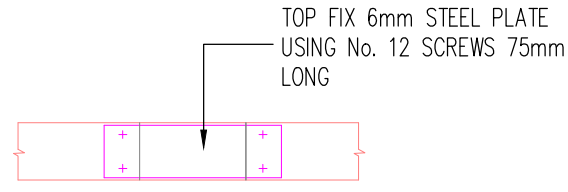
INFORMATION ON THIS DRAWING IS PRODUCED USING COLOURS IF DRAWING IS NOT PRINTED IN COLOUR VITAL INFORMATION MAY BE OBSCURED OR MISSING

### ELECTRICAL DRAWING NOTES

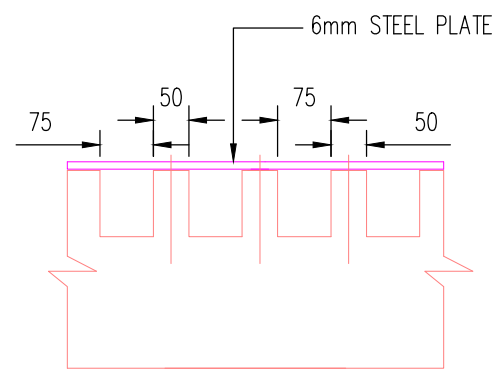
- ELECTRICAL INSTALLATION TO FULLY COMPLY WITH BS7671:2008.
- ALL CABLE ROUTES ARE INDICATIVE ONLY.
- ALL DRAWINGS ARE TO BE READ IN CONJUNCTION WITH THE SPECIFICATION.
- ALL ACCESSORIES TO BE AT LEAST 350mm FROM CORNERS TO ALLOW FOR DECORATING AND COMPLIANCE WITH PART M OF THE BUILDING REGULATIONS.
- CABLE ROUTES TO BE CO-ORDINATED WITH ALL OTHER SERVICES, STRUCTURE, BUILDING CONSTRUCTION ETC.
- ALL FINAL CONTAINMENT FROM THE MAIN CONTAINMENT RUNS SHALL BE SHOWN ON THE WORKING DRAWINGS AND AS BUILT DRAWINGS
- ALL CONTAINMENT BREACHES THROUGH FIRE COMPARTMENTS SHALL BE SUITABLY TREATED TO MAINTAIN THE INTEGRITY OF THE FIRE COMPARTMENT WALL. SEE THE FIRE STRATEGY DRAWING FOR INFORMATION ON FIRE COMPARTMENTS.
- THE DRAWING IS TO BE READ IN CONJUNCTION WITH THE MECHANICAL & ELECTRICAL SERVICES SPECIFICATION AND DRAWINGS.
- FIRE ALARM INSTALLATION TO COMPLY FULLY WITH BS5839 Pt 1 : 2013
- LIGHTING INSTALLATIONS TO COMPLY WITH THE CIBSE CODE FOR INTERIOR LIGHTING
- EMERGENCY LIGHTING TO COMPLY FULLY WITH BS5266:2011



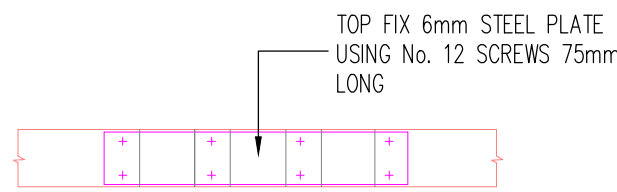
NOTCH REPAIR DETAIL 1  
FOR NOTCHES UPTO 25mm DEEP & OVER SERVICES  
(SCALE 1:10)



PLAN ON NOTCH REPAIR  
(SCALE 1:10)

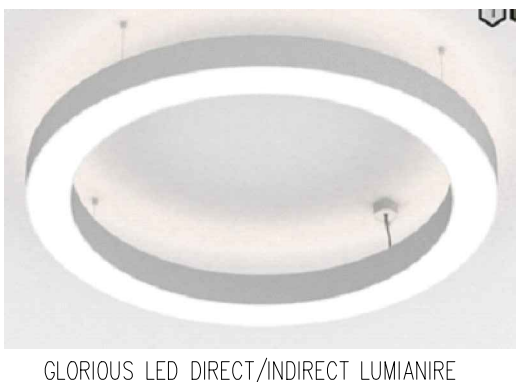


MULTI-NOTCH REPAIR DETAIL 2  
FOR NOTCHES UPTO 25mm DEEP & OVER SERVICES  
(SCALE 1:10)



PLAN ON MULTI-NOTCH REPAIR  
(SCALE 1:10)

ELECTRIC RADIATOR SCHEDULE						
ID	MAKE	MODEL	HEIGHT	LENGTH	DEPTH	OUTPUT
RAD-01	DIMPLEX GIRONA	GFP100W C/W RX24TI CONTROL	565mm	700mm	107mm	1000W
RAD-02	DIMPLEX GIRONA	GFP050W C/W RX24TI CONTROL	565mm	530mm	107mm	500W



GLORIOUS LED DIRECT/INDIRECT LUMINAIRE



ADA LED EXTERNAL LUMINAIRE

## XREF HISTORY

Architects Information			
Company	Filename	Drawing No.	Revision
-	EXISTING & PROPOSED BASEMENT PLAN	-	DRAFT

P2	KM	x	ONGOING DESIGN DEVELOPMENT
P1	KM	20.09.17	PRELIMINARY ISSUE
Rev	Dwn	Date	Description

## PRELIMINARY

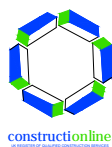
CLIENT  
THE BEDFORD ESTATES

SCHEME  
81 GOWER STREET  
LONDON

TITLE  
ELECTRICAL SERVICES  
BASEMENT LEVEL

© THIS DESIGN IS THE PROPERTY OF ITD CONSULTANTS LTD AND SHALL NOT BE REPRODUCED OR COPIED IN ANY WAY OR CONVEYED TO A THIRD PARTY WITHOUT THE OWNERS WRITTEN PERMISSION.

itd CONSULTANTS LTD (ENGINEERING SERVICES)  
Tel: 023 9243 5050  
www.itdconsultants.co.uk  
e-mail: eng@itdconsultants.co.uk



SCALE 1:50 @ A1 DATE SEP. 2017  
DRAWN BY KM CHECKED BY ITD

DRAWING NO. 17/2469/E00 REVISION P2



FR LED DOWNLIGHTER



MILEGEND ESCAPE LIGHT



FRONTIER



TORNADO WALL LIGHT