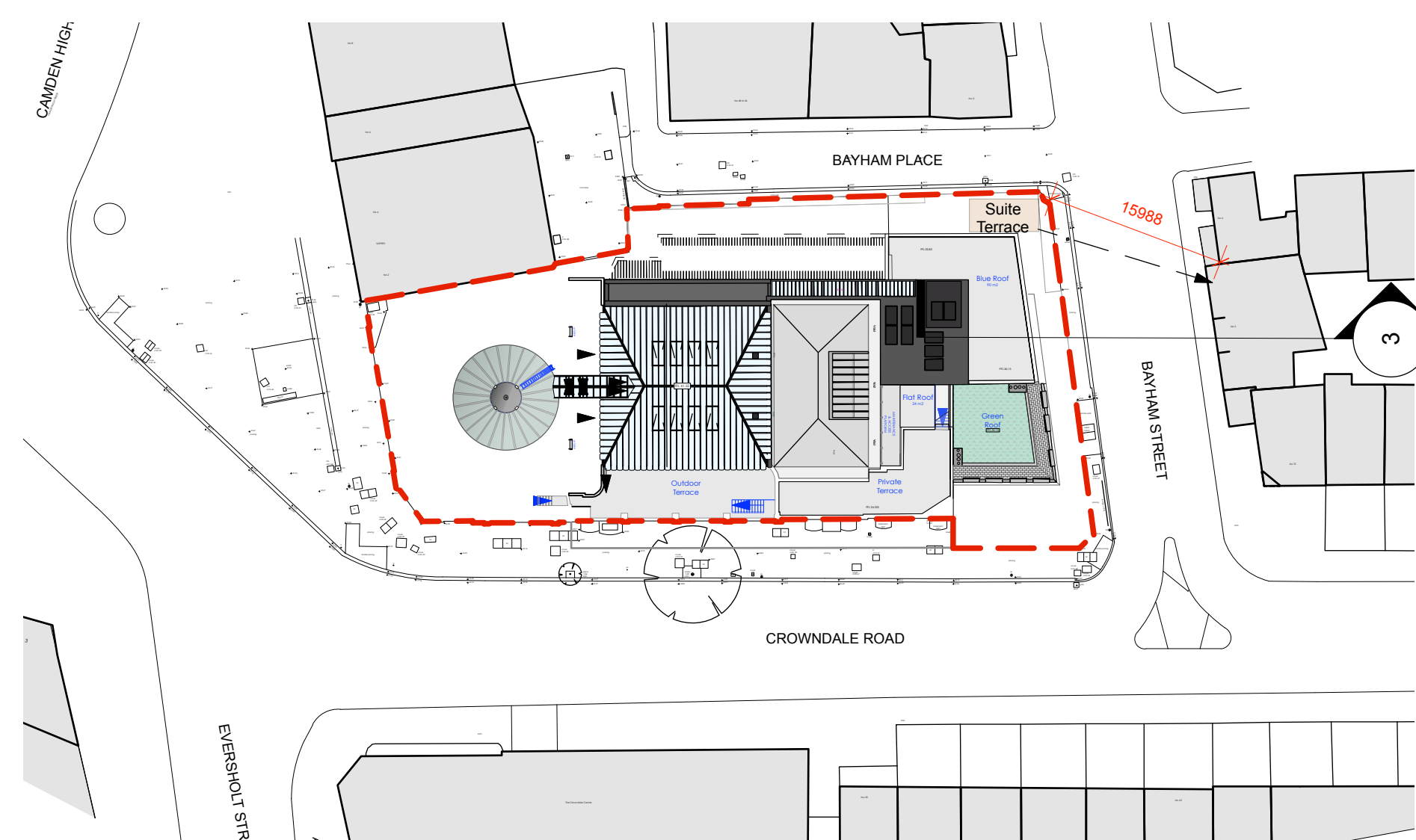
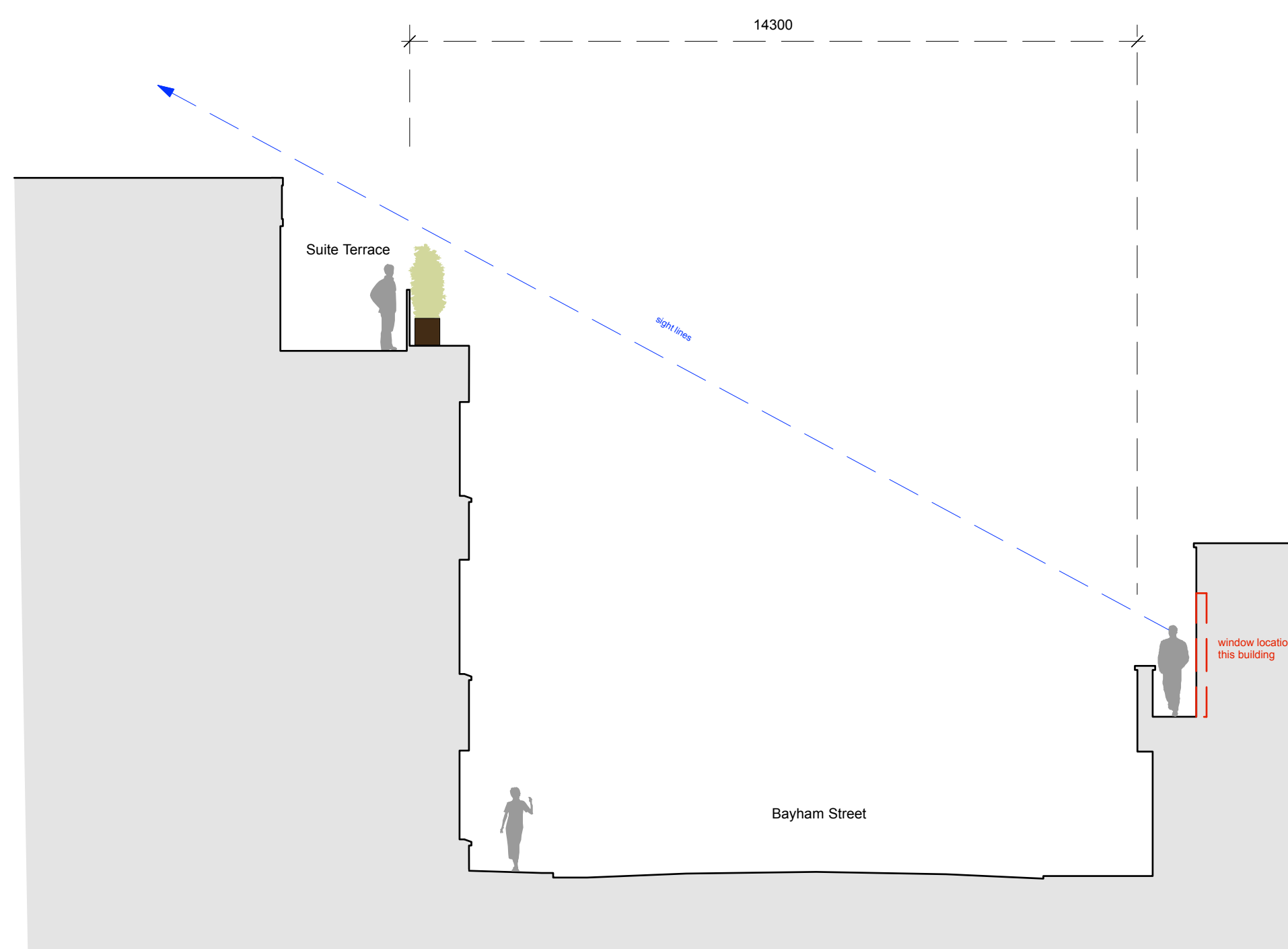


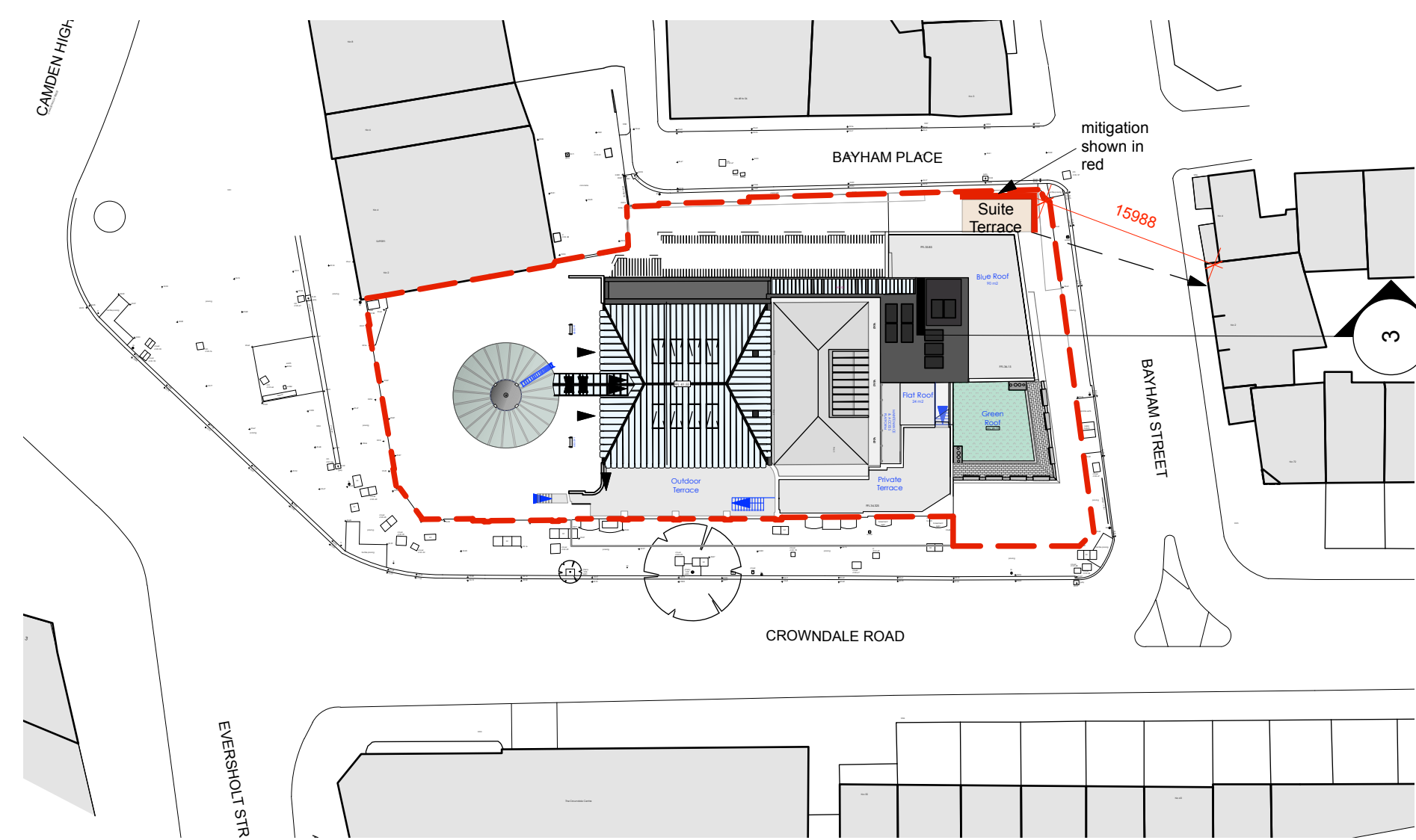
3 Section through Bayham Street without mitigation
 Scale: 1:100



Proposed Roof Plan
 Scale: 1:500

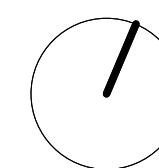


3a Section through Bayham Street with mitigation
 Scale: 1:100



Proposed Roof Plan with mitigation
 Scale: 1:500

24.10.17



For Information

Archer Humphryes Architects

Basement
 Central House
 142 Central Street
 London, United Kingdom
 EC1V 8AR
 T: +44 (0) 20 7251 8555

project title		
KOKO + Hope & Anchor + Bayham Place Camden, London		
drawing title	scale	date
Sections through Suite Terrace 2 Terrace Study	1:100 (A1)	07.04.17
drawing number	drawn	checked
AHA/KKC / PR / 211	PC/FR	PC/FR
	revision	
	-	