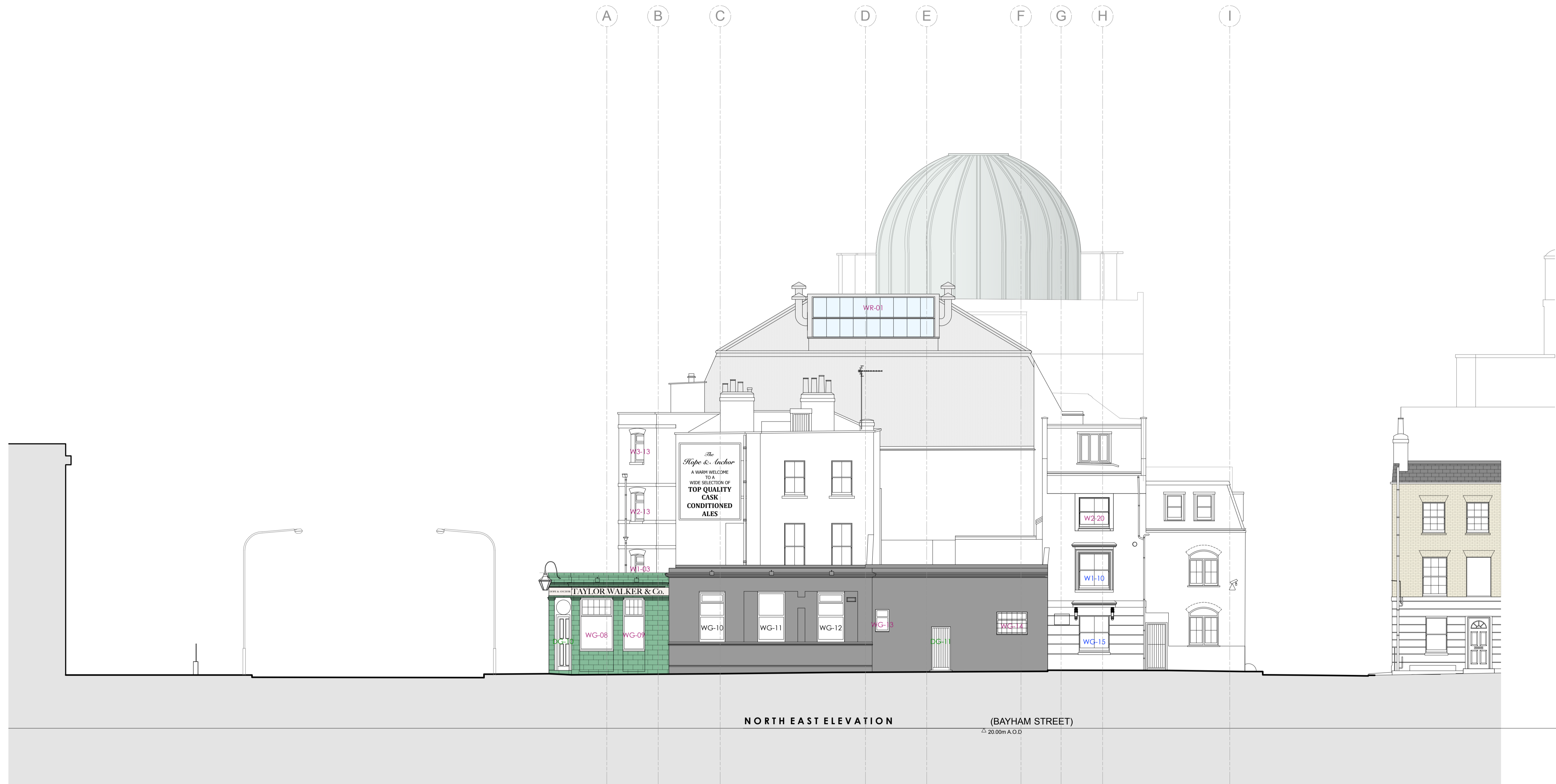
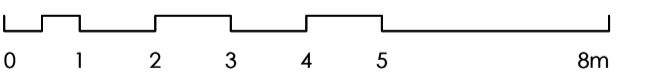


revision / date / amendments
- / - / - / -



19.10.17



PLANNING

Archer Humphryes Architects

Basement
Central House
142 Central Street
London, United Kingdom
EC1V 8AR
T: +44 (0) 20 7251 8555

project title	
KOKO + Hope & Anchor + Bayham Place Camden, London	
drawing title	scale date
Existing Bayham Street Elevation	1:100 BA1 28.11.16
drawing number	drawn checked
AHA/KKC/GA/202	FR/PC DA
revision	revision
-	-