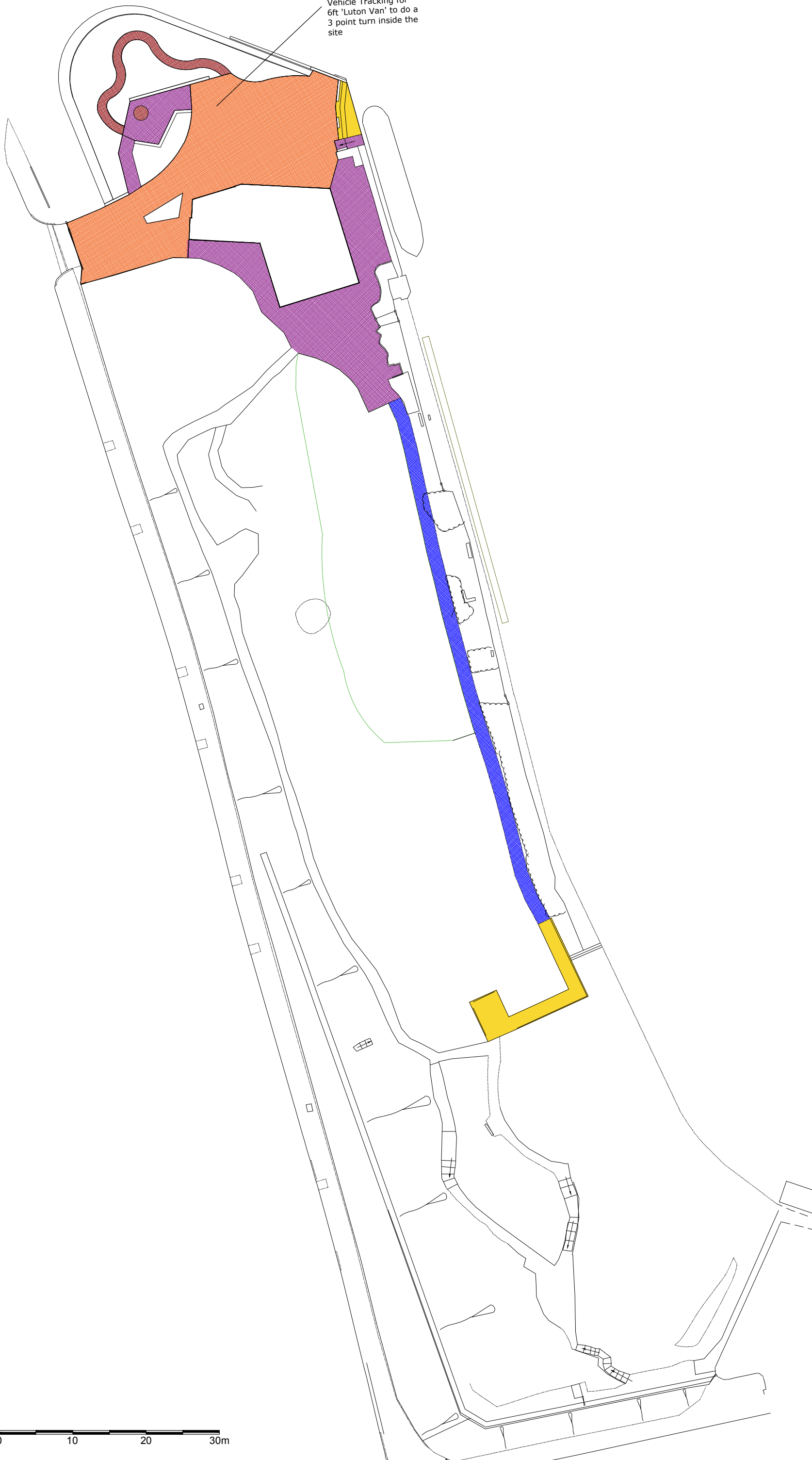


Vehicle Tracking for 6ft 'Luton Van' to do a 3 point turn inside the site



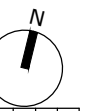
Notes:

1. Do not scale from this drawing.
2. All dimensions must be checked on site and any discrepancies verified with landscape architect.
3. All dimensions are drawn in mm.
4. Landscape drawing only.
5. All materials/items used to be as specified or alternatives to be approved by landscape architect.

KEY

- Bark chip mulch path over 50-70mm thick sub grade, 30mm deep chips with 18mm timber edging
- Permeable resin bound gravel surface suitable for vehicle loading. Subgrade re-enforced with 'eco-grid' recycled plastic reinforcement to provide permeable surface, 38mm timber edging
- Permeable resin bound gravel surface suitable for pedestrian movement only. Subgrade re-enforced with 'eco-grid' recycled plastic reinforcement to provide permeable surface, 18mm timber edging
- Self binding gravel 1.8m wide accessible route. Cambered self-binding gravel, banked path to ensure adequate drainage, over 150mm compacted subgrade. 18mm timber edging
- Timber decking to canal edge. Hardwood, FSC sourced, 19x140mm planks with grooves to aid slip resistance

0 10 20 30m



C	09.10.17	Planning Issue	LE	AM	AM
B	21.08.17	HLF Issue	LE	AM	AM
A	09.08.17	First Issue	LE	AM	AM
Iss	Date	Issue Notes			

LUC 43 Chalton Street
London, NW1 1JD
T: 020 7383 5784
F: 020 7383 4798
london@landuse.co.uk
www.landuse.co.uk

Project
Camley Street Natural Park
HLF Stage II
Client
London Wildlife Trust
Title
Surfaces Reference Plan

Scale
1:500 @ A3 Status
Planning

Job No. Drawing No. Issue
7076 7076-LD-PLN-200 C

Do not scale from this drawing
© Drawing & Design Copyright of LUC