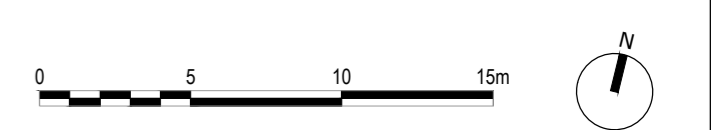




FOR DETAIL AREA OF  
NEW VISITOR CENTRE  
SEE DRAWING  
7076-LD-PLN-101

- Notes:**
1. Do not scale from this drawing.
  2. All dimensions must be checked on site and any discrepancies verified with landscape architect.
  3. All dimensions are drawn in mm.
  4. Landscape drawing only.
  5. All materials/terms used to be as specified or alternatives to be approved by landscape architect.

- KEY:**
- 01** New 1.8m wide accessible route directly to the pond dipping platform. Surfaced with cambered self binding gravel, banked path to ensure adequate drainage. See 7076-LD-PLN-200 for details of surfacing proposals
  - 02** Tree thinning, crown lifting and treeworks to enhance access to the canal and enable thriving and biodiverse meadow to attract butterflies and pollinators. Extension of the meadow improved biodiversity. See AIA and Tree Removals Plan 7096-LD-PLN-400
  - 03** Marginal planting to the canal edge using Coir rolls e.g. British Flora Coir Rolls Size: 3m x 300mm to restore canal edge
  - 04** Enhanced sluice gate / drainage system to enable variable water levels in the pond to promote biodiversity throughout the seasons
  - 05** Expanded no-go intervention area
  - 06** Repaired and resurfaced decking to the pond
  - S** Signage and interpretation locations according to the Activity Plan and Interpretation Strategy



D	09.10.17	Planning Issue	LE	AM	AW
C	21.08.17	PLP Issue	LE	AM	AW
B	09.08.17	Second Issue	LE	AM	AW
A	18.06.17	First Issue	LE	AM	AW
Rev	Date	Issue Notes			

**LUC** 43 Chalton Street  
London, NW1 1JD  
T: 020 7383 5784  
F: 020 7383 4798  
london@landuse.co.uk  
www.landuse.co.uk

Project  
**Camley Street Natural Park**

Client  
**London Wildlife Trust**

Title  
**Landscape Masterplan**

Scale  
**A1 @ 1:250**

Status  
**Planning**

Job No. **7096** Drawing No. **7096-LD-PLN-100** Issue **D**

No part scale from this drawing  
© Drawing & Design Copyright of LUC