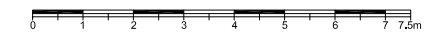
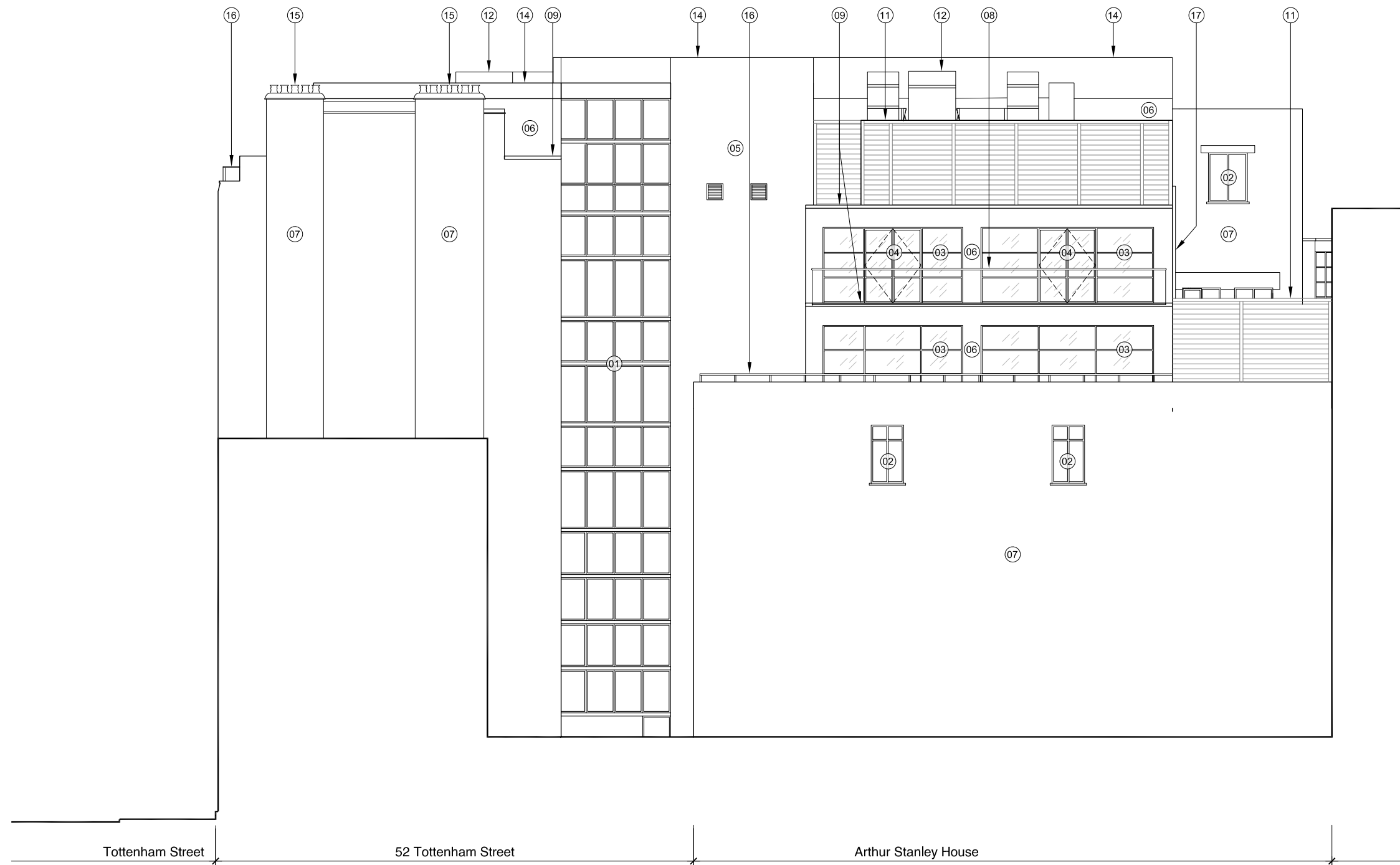


Notes:

1. Existing steel framed curtain walling. Frames spray painted. Colour: Dark grey, RAL: 7043.
2. Existing steel framed windows. Frames spray painted. Colour: Dark grey, RAL: 7043.
3. New metal framed glazed facade. Colour: Dark grey, RAL: 7043.
4. New metal framed glazed swing doors. Colour: Dark grey, RAL: 7043.
5. Existing white render repaired and redecorated. Colour: White.
6. New white rendered wall. Colour: White.
7. Existing London stock brick with beige colour pointing.
8. New frameless glass balustrade with s/s top rail.
9. New PPC metal fascia. Colour: Dark grey, RAL: 7043.
10. New lead transition capping.
11. New PPC metal louvered acoustic plant screen. Colour: Light grey, RAL: 9006.
12. New ductwork wrapped with matt vinyl. Colour: Light grey, RAL: 9006 to match roof finish.
13. -
14. New roof parapet with PPC metal capping. Colour: Light grey, RAL: 9006.
15. Existing No. 52 Tottenham Street brick chimney.
16. New metal balustrade. Colour: Dark grey, RAL: 7043.
17. New PPC metal clad tray. Colour: Light grey, RAL: 9006.



## For Planning

Rev.	Description	By	Date
P2	For Planning	TM	24.10.17

Client  
**BC Noho Limited**

Project  
**Cleveland Street**

Title  
**Proposed North East Elevation**

Project No.	Drawing No.	Rev.
<b>1621</b>	<b>20.273</b>	<b>P2</b>
<b>Scale</b>	1:75 @ A1	1:150 @ A3
<b>Drawn</b>	<b>Checked</b>	<b>Date</b>
TM	TL	26.10.16

Do not scale from this drawing. The Contractor is to take and check all dimensions on site before work commences. Discrepancies must be reported to the Architect. Subcontractors must verify all dimensions on site before making a shop drawing or commencing manufacturing. This drawing is copyright. ©

01 Proposed North East Elevation  
20.202 Scale 1:150 @ A3