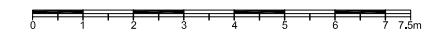
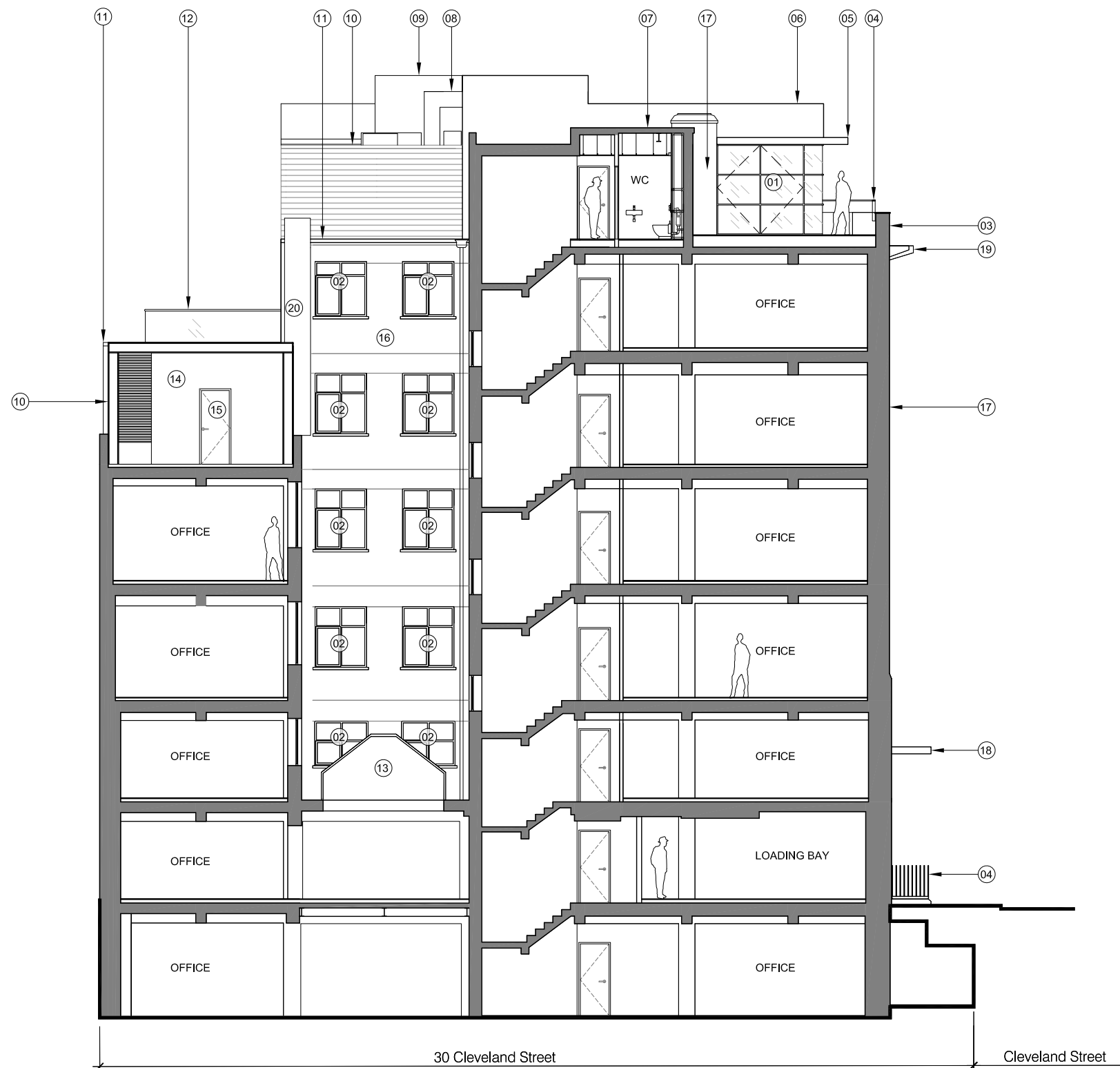


Notes:

1. New metal framed glazed facade. Colour: Dark grey, RAL: 7043.
2. Existing metal framed windows. Framing spray painted. Colour: Dark grey, RAL: 7043.
3. Existing white rendered parapet redecorated and coping stone cleaned.
4. New metal balustrade. Colour: Dark grey, RAL: 7043.
5. New PPC metal clad overhanging roof. Colour: Light grey, RAL: 9006.
6. New roof parapet with PPC metal capping. Colour: Light grey, RAL: 9006.
7. Existing stair core roof.
8. New ductwork wrapped with matt vinyl. Colour: Light grey, RAL: 9006 to match roof finish.
9. New lift overrun.
10. New PPC metal louvered acoustic plant screen. Colour: Light grey, RAL: 9006.
11. New PPC metal fascia. Colour: Dark grey, RAL: 7043.
12. New frameless glass balustrade with s/s top rail.
13. Existing metal framed skylight. Framing spray painted. Colour: Dark grey, RAL: 7043.
14. New rendered wall. Colour: White.
15. New plant enclosure metal door. Colour: White, RAL: 9016.
16. Existing London stock brick with beige colour pointing.
17. Existing rendered wall repaired and redecorated. Colour: White.
18. New canopy with integrated lighting. Fascias grey to match framing
19. Existing 'eyebrow' canopy to be repaired and redecorated. Colour: White.
20. New PPC metal clad tray. Colour: Light grey, RAL: 9006



## For Planning

Rev.	Description	By	Date
P2	For Planning	TM	24.10.17

Client  
**BC Noho Limited**

Project  
**Cleveland Street**

Title  
**Proposed Section DD**

Project No.	Drawing No.	Rev.
<b>1621</b>	<b>20.254</b>	<b>P2</b>
<b>Scale</b>	1:75 @ A1	1:150 @ A3
<b>Drawn</b>	<b>Checked</b>	<b>Date</b>
TM	TL	23.11.16

Do not scale from this drawing. The Contractor is to take and check all dimensions on site before work commences. Discrepancies must be reported to the Architect. Subcontractors must verify all dimensions on site before making a shop drawing or commencing manufacturing. This drawing is copyright. ©

01  
20.202  
Proposed Section DD  
Scale 1:150 @ A3