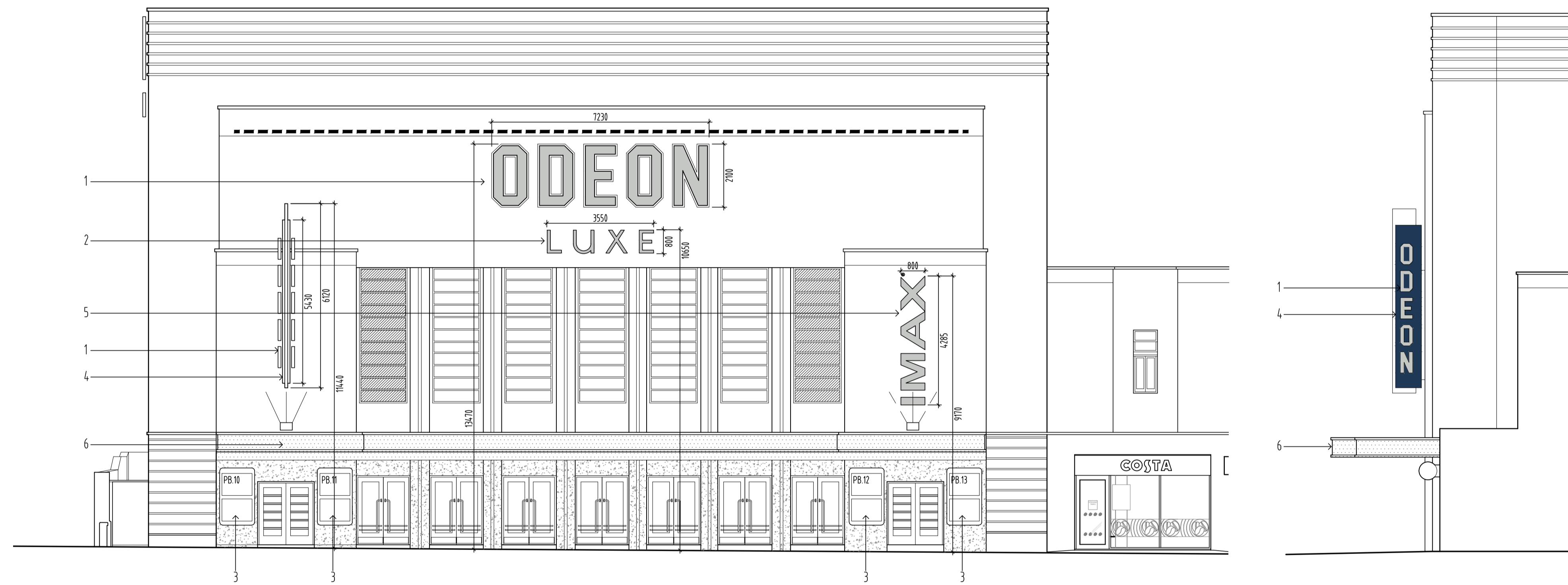


This drawing is copyright of N.B.D.A. Ltd. and should not be reproduced without permission. Dimensions should not be scaled off this drawing. All dimensions should be checked on site.

Rev.	By	Date	Notes :-	Checked
A	AJH	10.10.17	Illumination of signs indicated	
B	AJH	18.10.17	Clear indication of new signage shown on photographs. All signs internally illuminated. Measurements added	

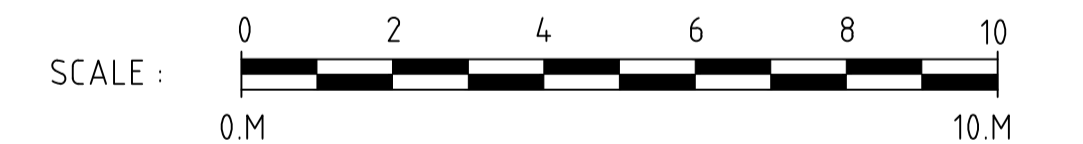
PROPOSED ODEON SIGNAGE KEY

1. New ODEON signage in Stainless Steel finish to replace existing on a like for like basis. Internally illuminated (max 300 Candela/m²)
2. 'Luxe' Signage to be fixed below ODEON letters as per guidelines. Internally illuminated (max 300 candela/m²)
3. Existing Poster Boxes to be cleaned and new branding installed.
4. New dark blue background in RAL 5003 'Sapphire Blue' as per ODEON specification
5. Existing IMAX signage to be relocated and hung vertically. Internally illuminated (max 300 candela/m²)
6. 'Fanatical About Film' signage to be removed. Existing fascia surface to be retained.

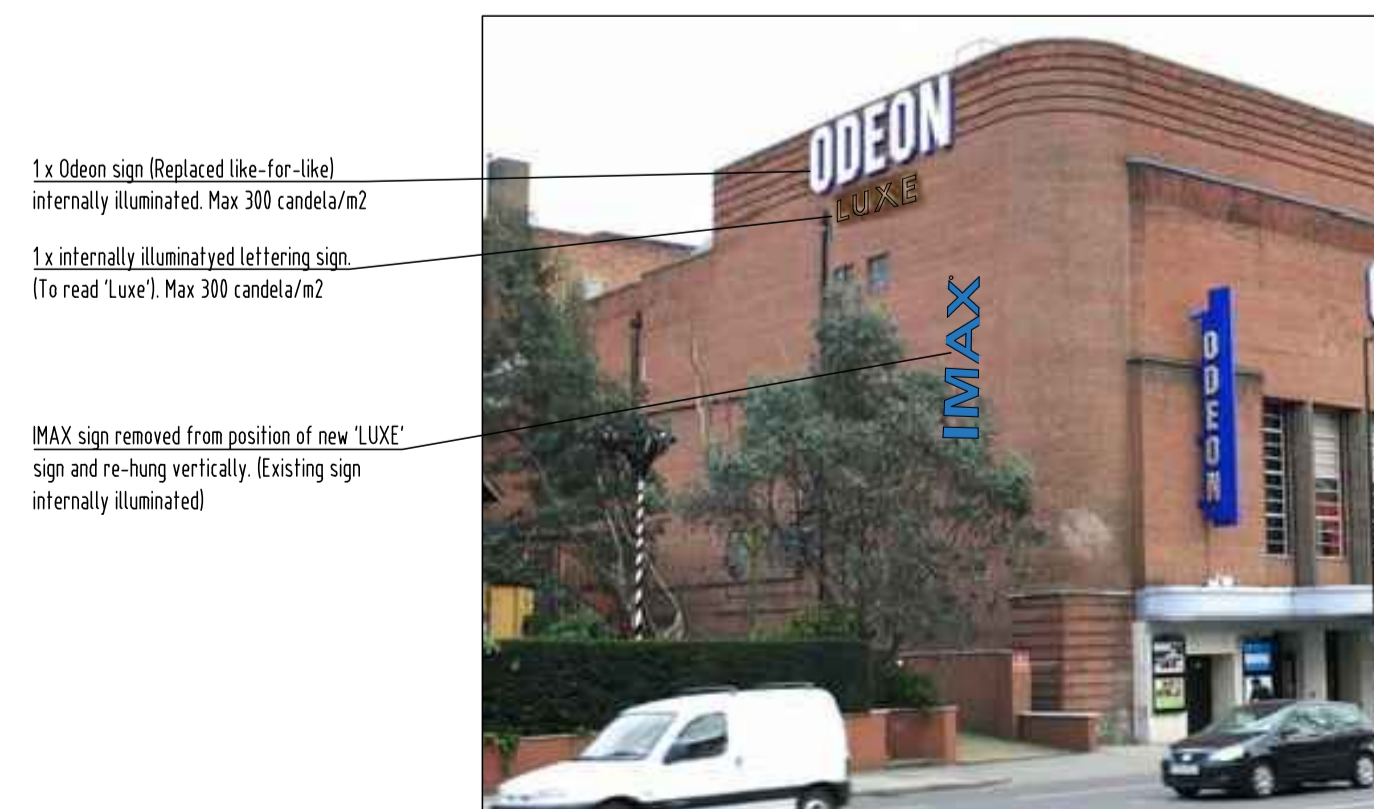


ODEON Cinema

Proposed Front Elevation (Finchley Road)
Scale 1:100@A1



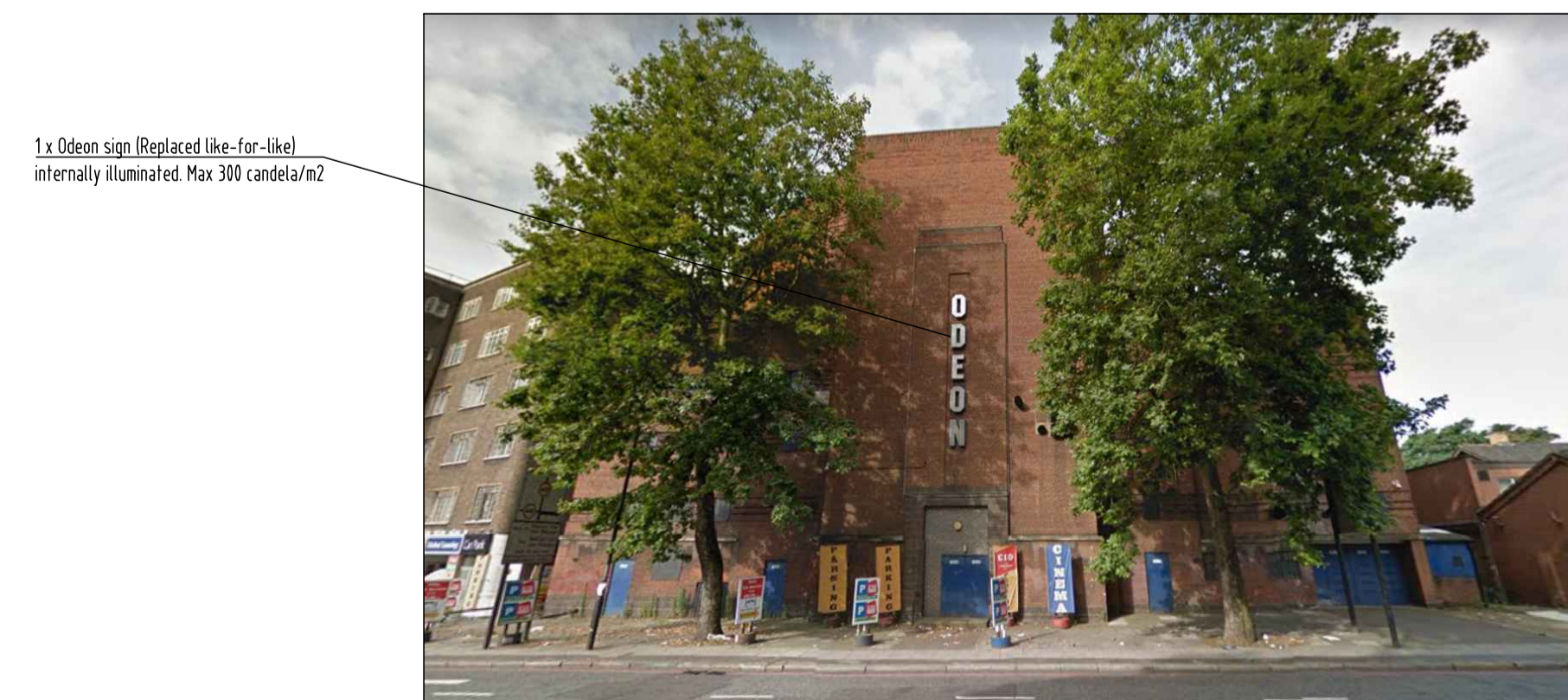
Extent of New Signage
(Scale of signs on photographs indicative only - See technical drawings for exact measurements)



North Elevation (Facing Swiss Cottage Station)



Finchley Road Elevation



Avenue Road Elevation

ODEON

CINEMAS

SWISS COTTAGE

Drwg Title :- PROPOSED ELEVATIONS
SHEET 1
FRONT ELEVATION - PROP SIGNAGE

NBDA

Northern Building Design Associates Limited
Architects • Interior Design • Planning

The Old Church Palmerston Street Bollington Cheshire SK10 5PW
Telephone : 01625 575550 Fax : 01625 576606
Email : design@nbda-architects.co.uk

Drawn by: AEM	Date: 29.08.17	Drwg No: 1619-SC-070	Rev: B
Checked:	Scale: 1:100@A1		