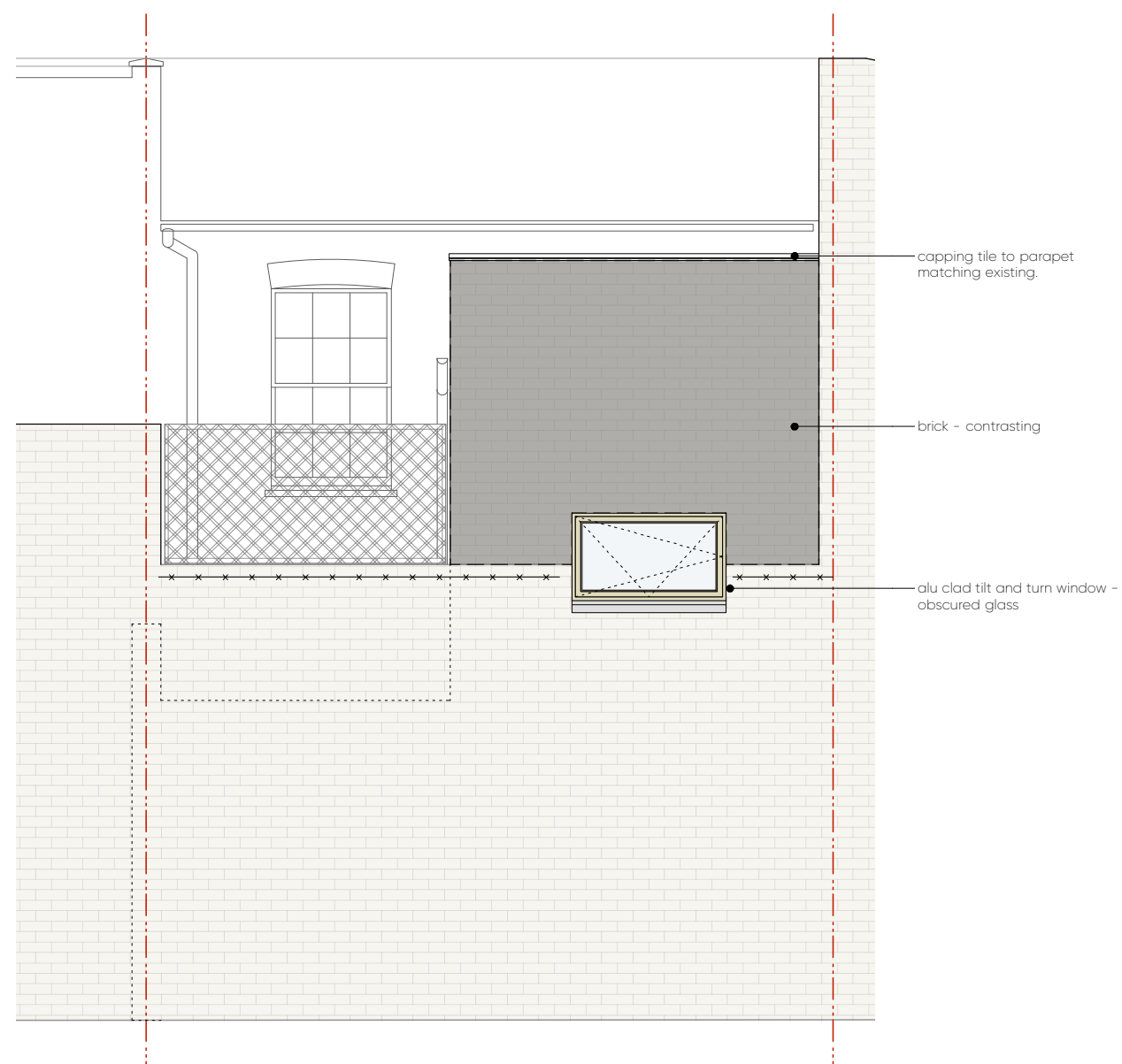


AS EXISTING

© Knott Architects
98B Tollington Park
London N4 3RB
tel: (020) 72638844
mail@knottarchitects.co.uk

Revisions
A - 12.10.17 notes added.



view from yard to
no. 30 Kelly Street

view from yard to
no. 32 Kelly Street

view from yard to
no. 34 Kelly Street



KNOTT

32 Kelly Street
Section C-C - As Proposed
Scale 1:50 @ A3
Date: August 2017
414.055 Rev - A

ARCHITECTS