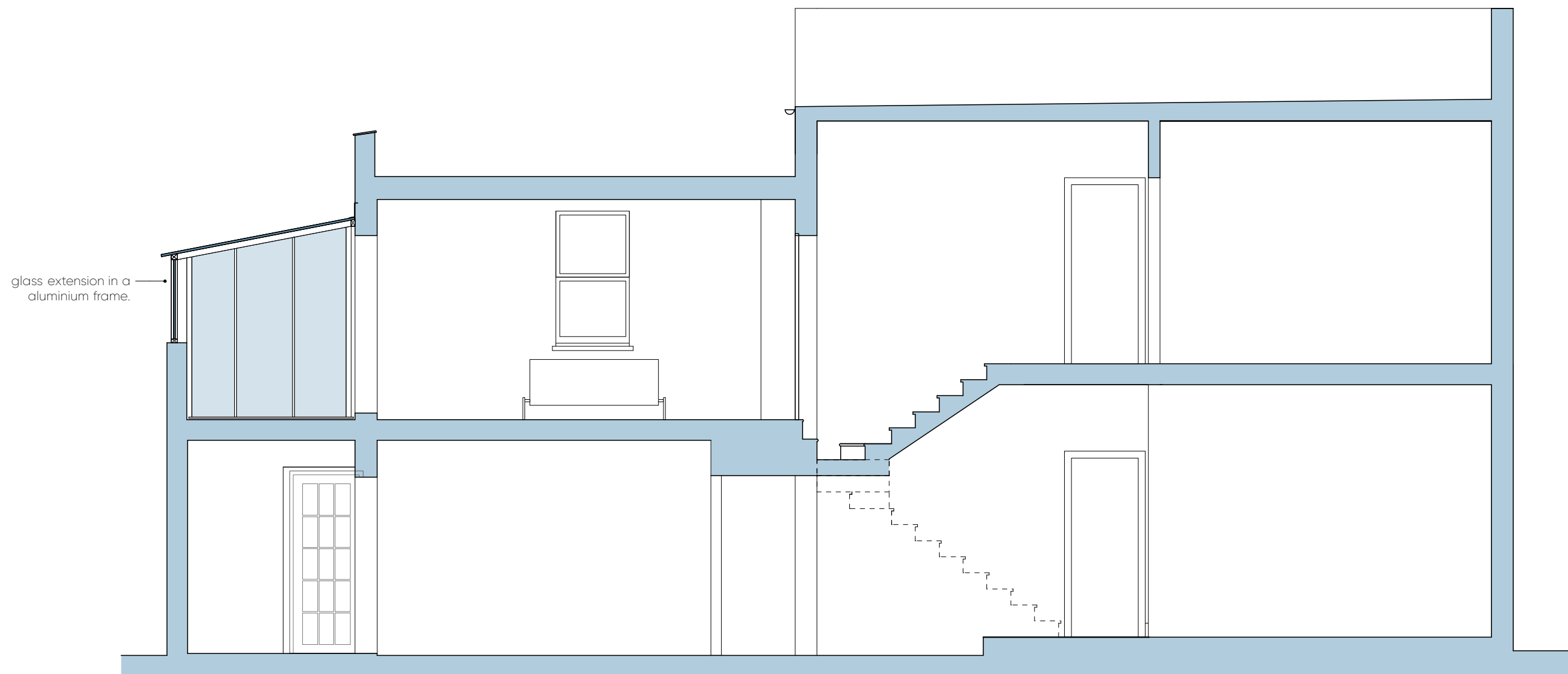


# AS EXISTING

© Knott Architects  
98B Tollington Park  
London N4 3RB  
tel: (020) 72638844  
mail@knottarchitects.co.uk

Revisions  
A - 12.10.17 notes added



glass extension in a  
aluminium frame.



# KNOTT

32 Kelly Street  
Section A-A - As Existing  
Scale 1:50 @ A3  
Date: August 2017  
414.003 Rev -A

# ARCHITECTS