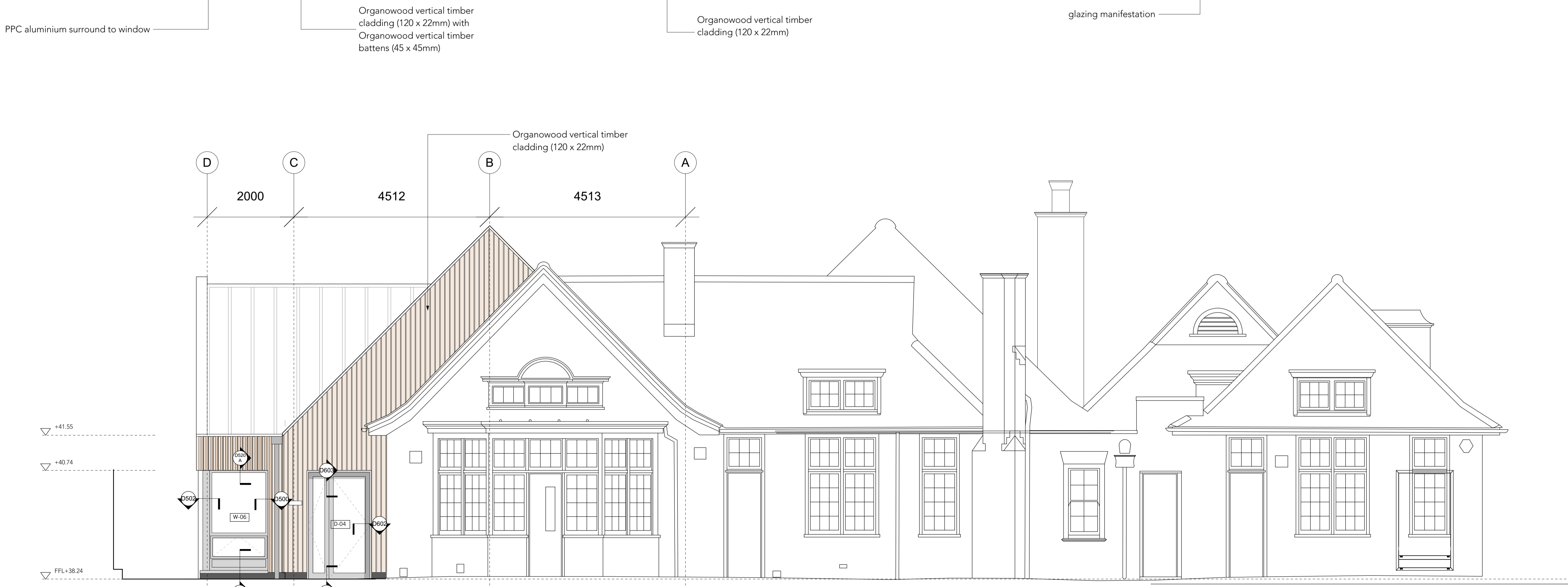


1 NORTH ELEVATION
596_L101



2 WEST ELEVATION
596_L101



Do not scale from drawings
Confirm all dimensions on site prior to manufacture
Confirm discrepancies with Architect prior to proceeding
Refer to all Engineers' documentation

REVISIONS		
rev. no.	date	description

KEY PLAN

Notes:

- P1 24-07-17 Discharge of Planning Conditions
- T1 28-04-17 Tender Issue

job no.	596	job title	KINGSGATE PRIMARY SCHOOL KS2 EXPANSION CAMDEN - NW6 2JG
date	24-07-17	dwg. title	ELEVATIONS PROPOSED_sheet 2
CHK/RT.	drawn 1:50@A1	scale	
		dwg. no.	596_L-101
		rev. no.	P1
		status	PLANNING

© Sarah Wigglesworth Architects
T +44 (0)20 7607 9200 F +44 (0)20 7607 9800
E mail@swarch.co.uk W www.swarch.co.uk