

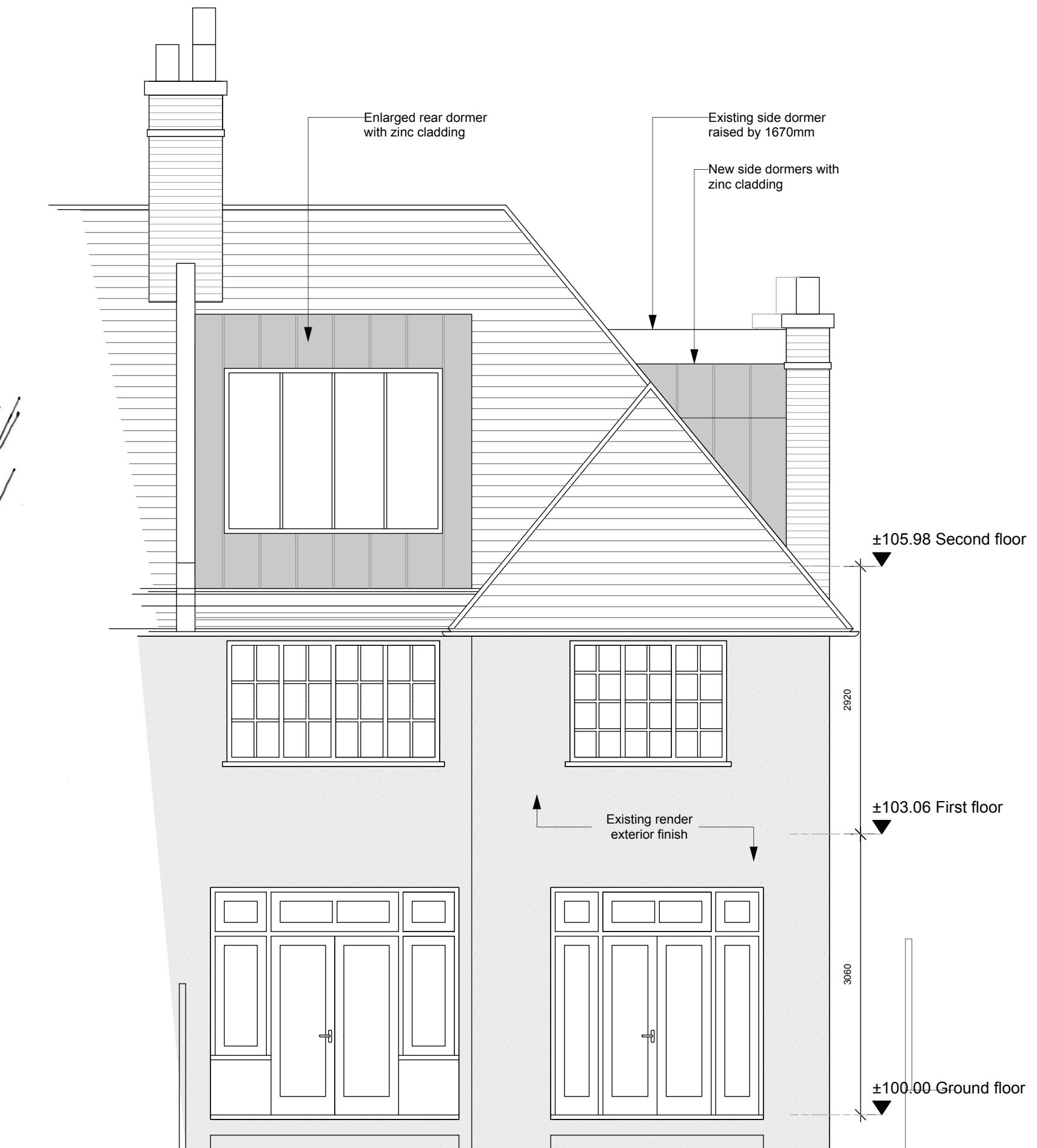


0m 1m 2m 5m

Revisions

---

DO NOT SCALE OFF THIS DRAWING. ALL COPYRIGHTS RELATING TO THE DESIGN WORK CONTAINED ON THIS DRAWING TO BE RETAINED BY GILES & PIKE LTD.



PROPOSED ELEVATION - Rear Elevation

296 West End Lane, NW6 1LN

Drawing no. 2017-1047-121

Rev.

Giles & Pike Ltd

Scale 1:50 @ A3

Status PLANNING

Client MR S ISAAC

537 Battersea Park Road . London . SW11 3BL

Date OCT 2017

Drawn By LB

Giles & Pike Architects

www.gilespike.com

Tel 020 79246257