

PLANTING SPECIFICATION

GENERALLY

- Timing:** Planting shall be implemented during the first planting season from mid-November to mid-March following substantial development completion or phases thereof.
- Plant Stock:** Plant stock must be in strict accordance with the schedule of plants shown on the drawing. All plants are to be supplied by nurseries registered with the HTA Nursery certification scheme in accordance with the National Plant Specification.
- British Standard:** All tree and shrub planting and turfing shall be carried out in accordance with the relevant British Standards.
- Planting Conditions:** No planting shall take place when the ground is frozen, wet or waterlogged or in excessively windy conditions, or in any other conditions that could adversely affect the successful establishment of plant material. All plants on site to be protected from adverse weather conditions.
- Planting Positions:** All plants must be planted in the exact locations shown on the drawings, if this is not possible due to site layout changes or unmarked service runs etc. then changes must be agreed and confirmed in writing by the Contract Administrator.
- Watering Prior to Planting:** All container grown and root balled planting stock shall be thoroughly watered before planting on the same day as the planting operation.

PLANTING BEDS

- Bed Widths:** Shrub beds shall be 1m minimum width, where space allows. Hedge beds shall be 700mm for single row hedges and 1m for double-row hedges.
- Herbicide Application:** Spray planting beds with translocated herbicide if there is any pernicious perennial weed growth. Allow weed growth to die off and repeat treatments if necessary to ensure that planted areas are free from perennial weed growth prior to further cultivation. Spraying to be carried out in accordance with COSHH regulations 1994.
- Cultivation:** Cultivate all planting beds to 300mm depth to form an open textured free draining growing medium. Remove all stones and other debris larger than 100mm and remove all litter and vegetative matter. Incorporate Fisons 'Ficolite' 140 day 16,10,10 slow release fertiliser at a rate of 100 grams per m2 in accordance with the manufacturer's instructions. Incorporate compost at 25 litres per m2, compost to be of a peat free type. Areas of existing soil that have become compacted shall be broken up and loosened by hand forking or deep ripping to a depth of 600mm in accordance with the relevant British Standards.
- Finished Surface:** Rake all shrub and hedge beds to form an even surface. Remove all surface stones and other debris larger than 50mm. NB ensure that final soil levels within 300mm of edge of all beds are 70mm below adjacent surfaces, to stop mulch moving from bed. Water lightly if the soil is dry prior to planting.
- Planting:** Container grown shrubs shall be pit planted, small open ground stock may be notch planted. Following planting, lightly firm the soil around the base of the plant.
- Wood Chip Mulch:** Mulch shall be coarse wood chips with no fines. Spread wood chip mulch to an even depth of 50mm over entire planted area.
- Pruning:** Immediately after planting shrubs and hedging, carefully remove all damaged, dead or diseased branches and remove any weak, thin or malformed growth in a manner and at a point appropriate for the species.
- Watering:** Water in each plant position with 15 litres, or to field capacity upon planting, or at the end of the day during which the planting was carried out.

TREES

- Excavation:** Excavate pits so that the diameter / depth of the pit allows a gap of approximately 150mm between the extent of the roots and the side of the pit. Remove all stones and other debris over 100mm diameter and all vegetative material. Remove any excavated material that is not suitable to form an open textured free draining growing medium and replace with topsoil.
- Cultivation:** Loosen sides and bottom of pit to encourage drainage. Mix backfill with 100 grams of Fisons 'Ficolite' 140 day 16,10,10 slow release fertiliser, in accordance with the manufacturer's instructions and 25 litres of compost, compost to be of a peat free type. Areas of existing soil that have become compacted shall be broken up and loosened by hand forking or deep ripping to a depth of 900mm to a minimum of a 1m radius from the proposed tree position, in accordance with the relevant British Standards.
- Single Staking Standard and Feathered trees. NB: Only stake smaller stock size trees if entirely necessary to support to tree:** Stake trees with a single stake, 1.8m long x 100mm diameter, driven vertically into base of pit. Finished height of stake to be 800mm above finished ground level, cut stake if necessary to achieve this height.
- Planting:** Position trees, and fix to stakes using biodegradable tree tie with spacing device. Ties to be nailed 25mm from top of stake. Backfill tree pit with clean topsoil and firm in after planting.
- Mulching:** Trees pits in shrub beds - include mulch as per adjacent shrub planting. Tree pits in grass areas - Ensure finished soil level is 100mm below adjacent grass surface to a radius of 500mm from the base of the tree, thus forming a neat circle. Spread 80mm depth of coarse wood chip mulch over surface of pit.

MAINTENANCE

- Maintenance period:** Carry out the following maintenance operations until planting is established. Ensure that maintenance operations are carried out as necessary to keep the works in a tidy condition throughout the maintenance period.
- Weed control:** Remove all weed growth by hand or treat with spot herbicide applications, taking care to avoid spray drift. Spraying to be carried out in accordance with COSHH regulations 1994. All arisings to be removed from site.
- Litter removal:** Remove from site all litter and other debris during each maintenance visit.
- Pruning:** Prune off dead, damaged, diseased or misshapen growth from shrubs and trees to promote good habit and shape.
- Replacement:** Replace or make good immediately, any soft landscape item that fails, or does not develop full foliage during the maintenance period.
- Watering:** Water soft landscape items as necessary throughout the maintenance period, to ensure establishment. Replace or make good immediately, any soft landscape item that fails due to lack of water.

PLANT SCHEDULE

SHRUBS					
QTY	CODE	PLANT NAME	STOCK	SIZE	SPACING
38No.	Abe FM	Abelia x grandiflora 'Francis Mason'	C 3L	30-40cm	3/m2
19No.	Cho Azt 10L	Choisya ternata 'Aztec Pearl'	C 10L	40-60cm	1/m2
67No.	Cor Aur	Cornus alba 'Aurea'	C 3L	40-60cm	3/m2
22No.	Cor Fla	Cornus stolonifera 'Flaviramea'	C 3L	40-60cm	2/m2
156No.	Heb Mar	Hebe 'Marjorie'	C 3L	40-60cm	3/m2
125No.	Ros Mag	Rosa 'Magic Carpet'	C 3L	30-40cm	3/m2
74No.	Vib dav	Viburnum davidii	C 3L	20-30cm	3/m2

HERBACEOUS PLANTS				
QTY	CODE	PLANT NAME	STOCK	SPACING
114No.	Mis ML	Miscanthus sinensis 'Morning Light'	C 3L	3/m2
54No.	Mis pur	Miscanthus sinensis purpurascens	C 3L	3/m2

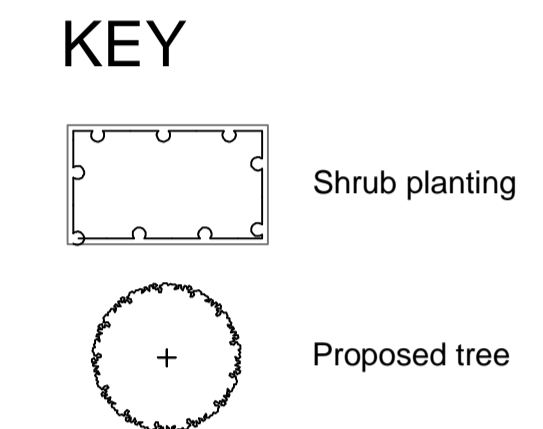
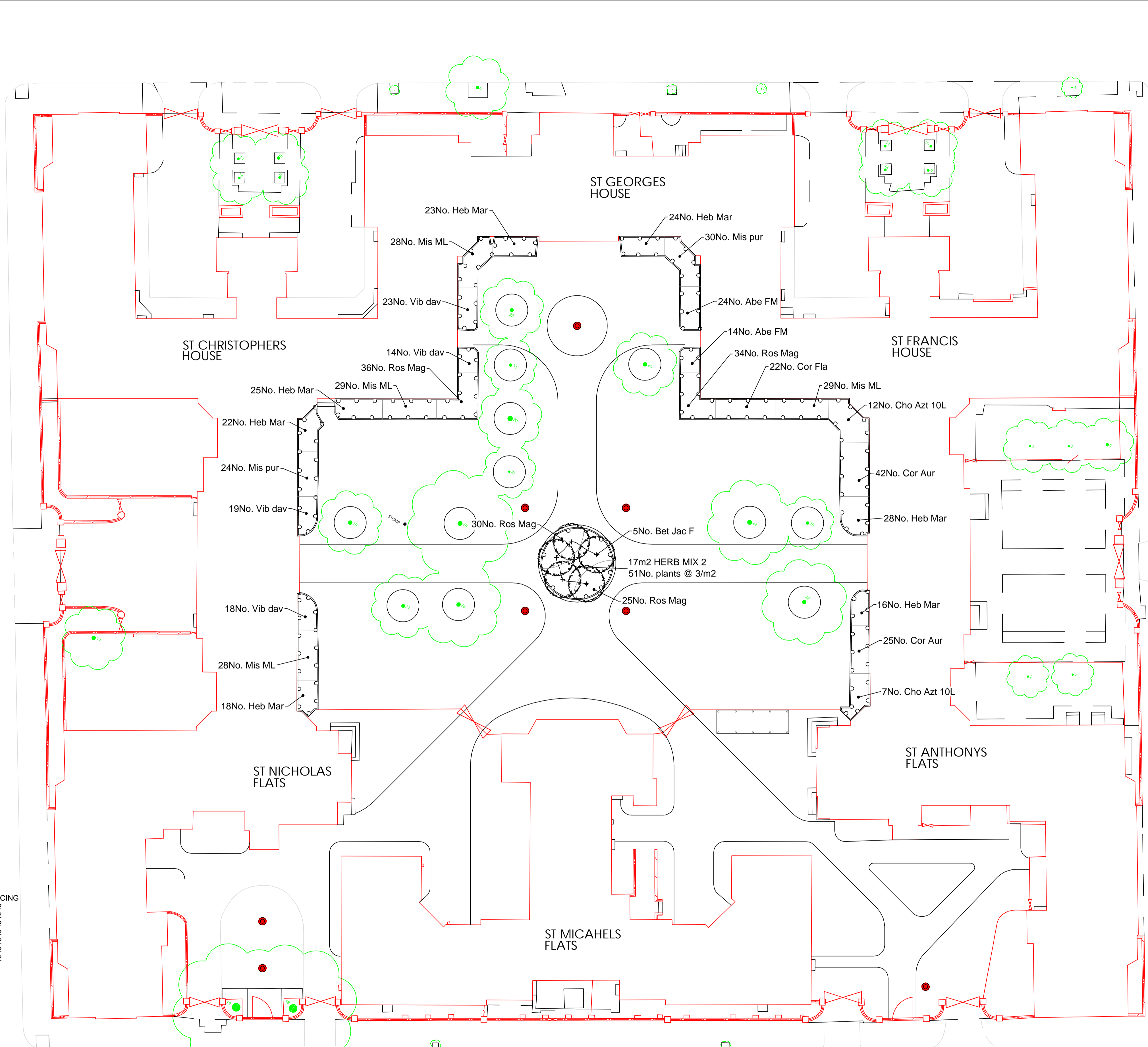
TREES					
QTY	CODE	PLANT NAME	STOCK	FORM	GIRTH/HEIGHT
5No.	Bet Jac F	Betula utilis 'Jacquemontii'	C 15L	FTH	150-180cm

BULB/WILDFLOWER MIXES				
PERCENT	QTY	PLANT NAME	GRADE	
17m2 HERB MIX 2 planted @ 3/m2				
30%	15No.	Anemone x hybrida 'September Charm'	3L	
30%	15No.	Eupatorium purpureum maculatum 'Album'	3L	
40%	20No.	Gillenia trifoliata	3L	

Individual varieties to be planted in groups of approximately 3-7.

NOTES AND ABBREVIATIONS:
 C = Container (or pot) grown, followed by size of the container (or pot).
 FORM = Shape of tree as supplied by the nursery.
 Fth = Feather.
 QTY = Quantity
 SIZE = Height or Spread of juvenile plant.
 STOCK = Root condition/protection method eg Bare root.

- Refer to specification for further information.
 - All plants to be completely hardened off
 - Substitutions to be agreed with Landscape Architect.
- Plant Schedule generated by "Qscape" software 05/10/2017



Revisions :

Land & Sculpture Design Partnership
 LANDSCAPE ARCHITECTURE · SCULPTURE · ARBORICULTURE

SITE : Sidney Estate
 DRG : Planting Proposal
 DRN BY : GH
 SCALE : 1:200 @ A1
 DATE : October 2017
 No : LSDP 1035.01

OCTAGON HOUSE · THE WATER RUN · HITCHAM · IPSWICH · IP7 7LN
 T : 01449 740272 · E : LSDP@btinternet.com