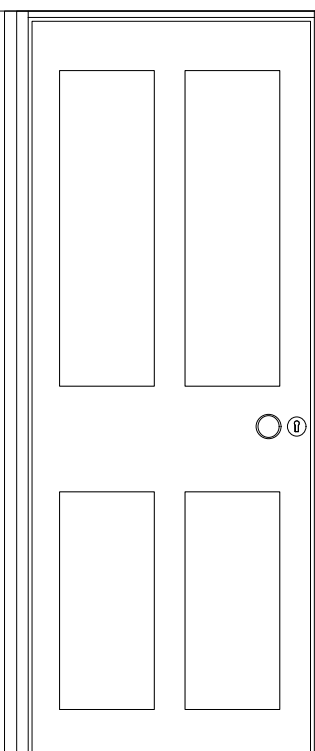


FROM HALL



FROM BED 5

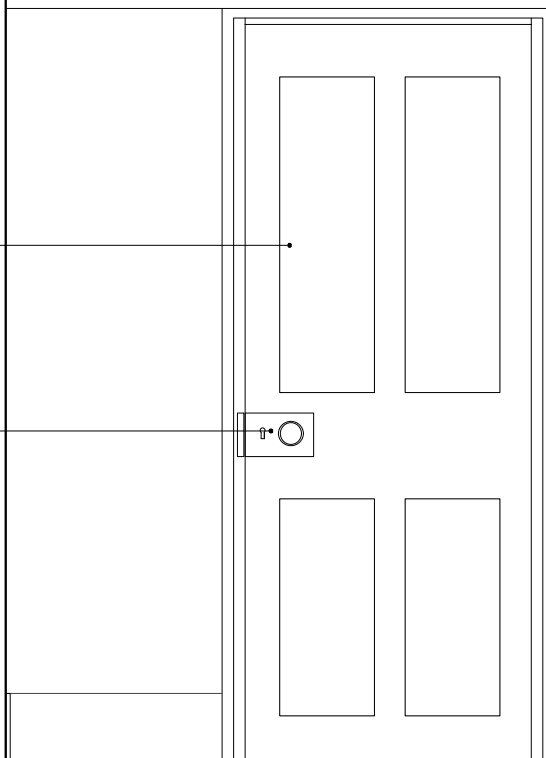
HALL



EXISTING SPLIT 'STABLE'
LEAF RECONNECTED

RIM LOCK WITH KNOB

BED 5



HALL

BED 5

REHANG DOOR TO OPEN INWARDS

Lisa Shell
architects

EG2 Norway Wharf, 24 Hertford Road, N1 5QT
T. 020 7275 7773 E. mail@lisashellarchitects.co.uk

www.lisashellarchitects.co.uk

Director: Lisa Shell RIBA Registered in England No. 5000138
Registered office: Ross House, Stow-on-the-Wold, Glos. GL54 1AF

REVISIONS/ ISSUE

04/10/2017
ISSUE TO PLANNING
FOR APPROVAL

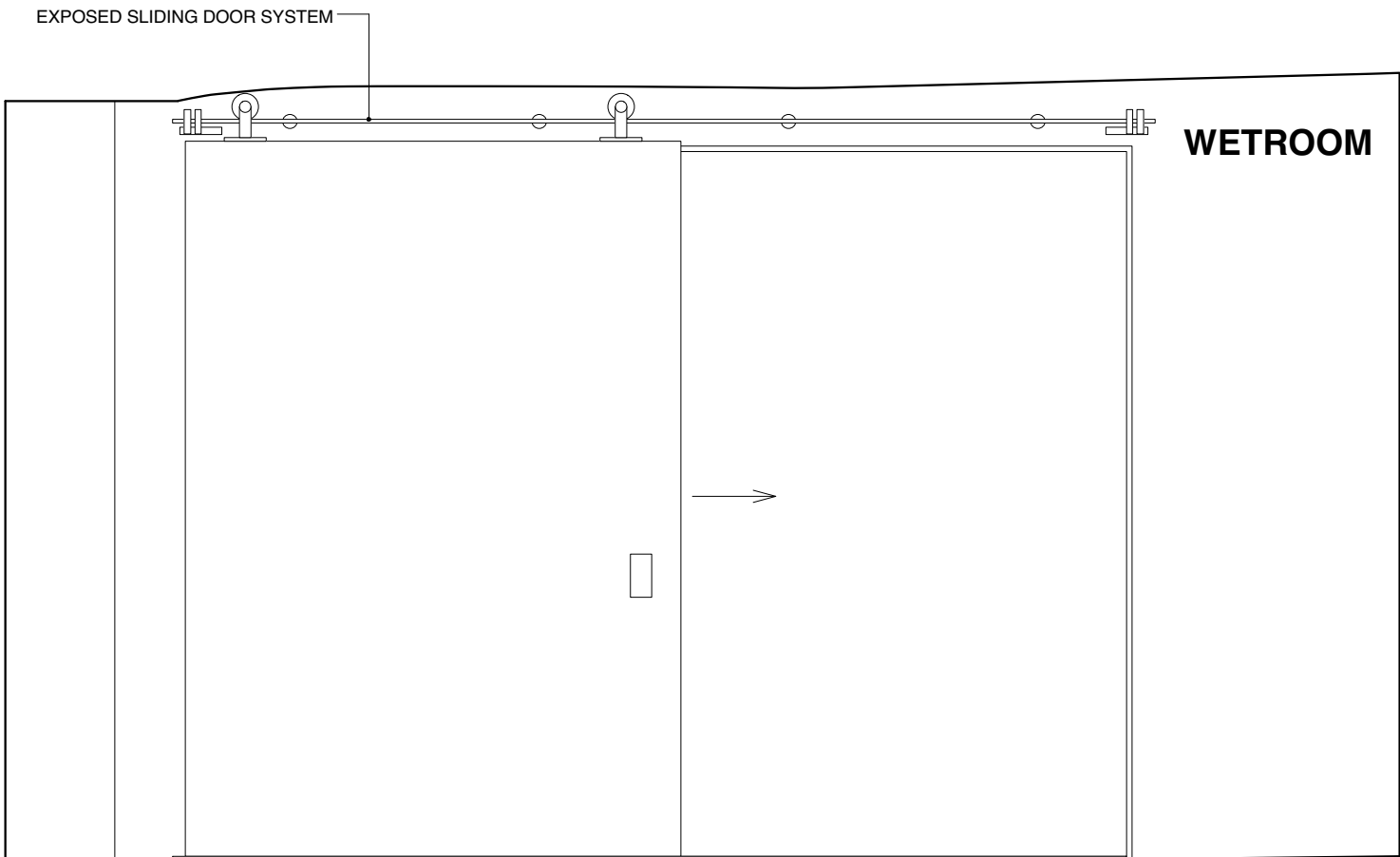
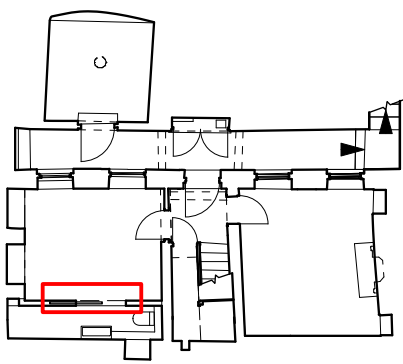
MORETON HOUSE N6

BASEMENT

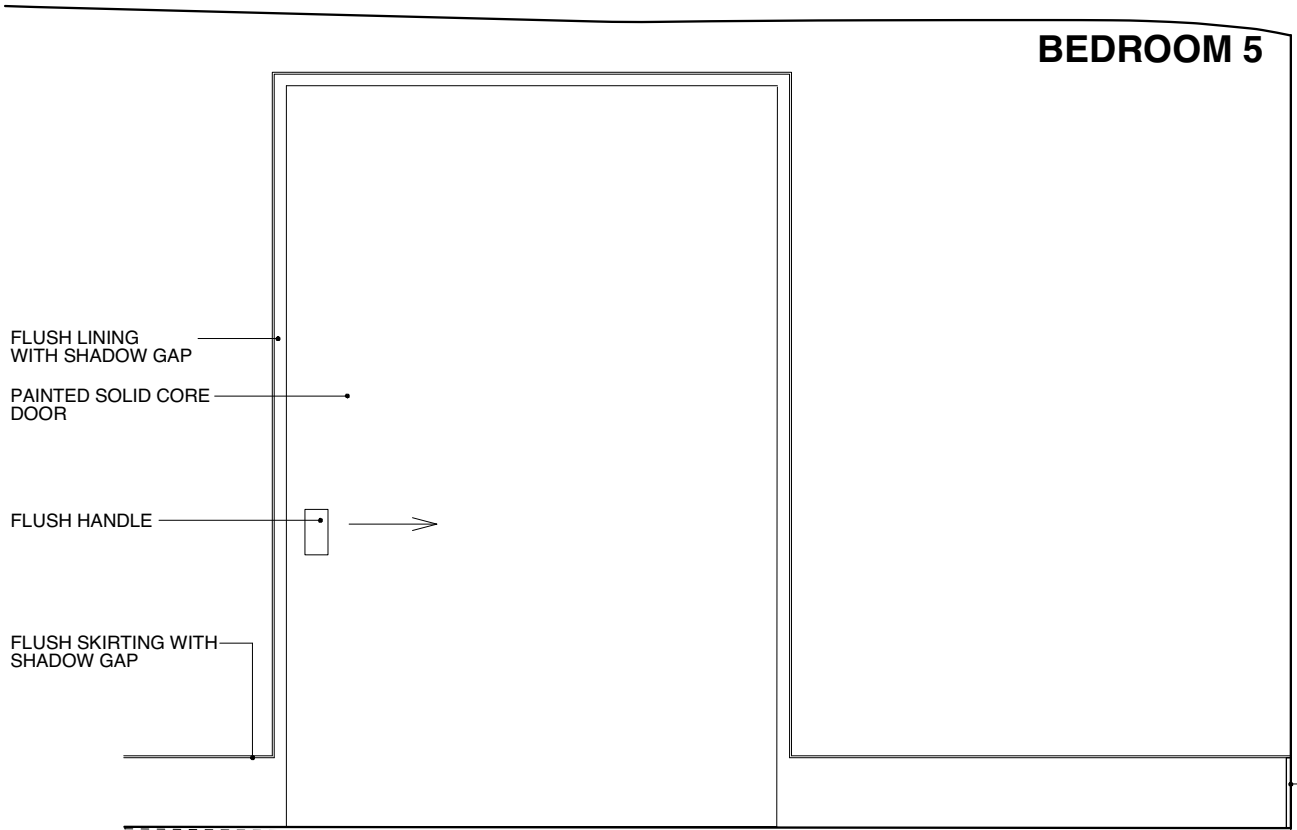
BEDROOM 5 DOOR D005 MRT/CO/201

1:20 @ A4

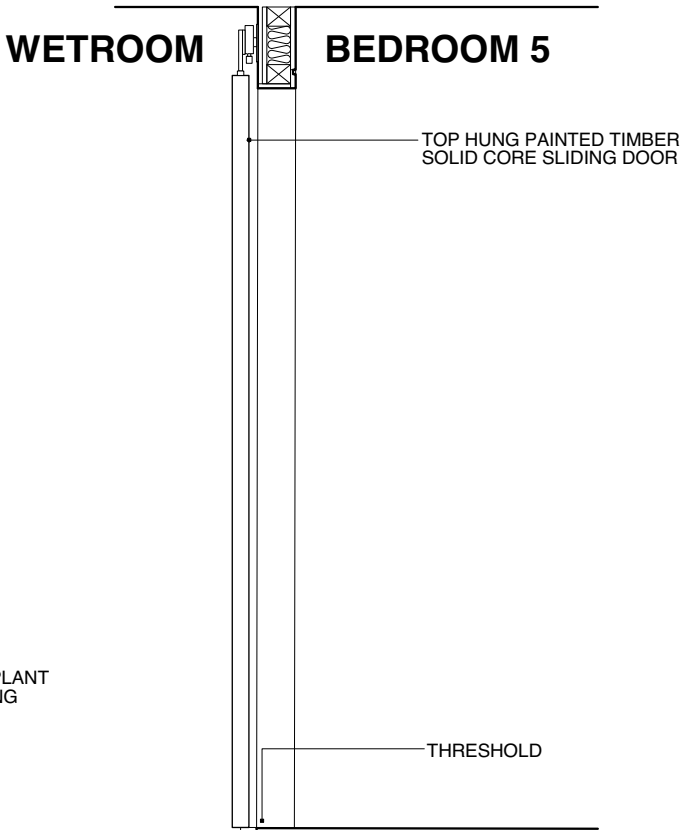
DO NOT SCALE FROM THIS DRAWING REFER ALL
DISCREPANCIES TO ARCHITECT



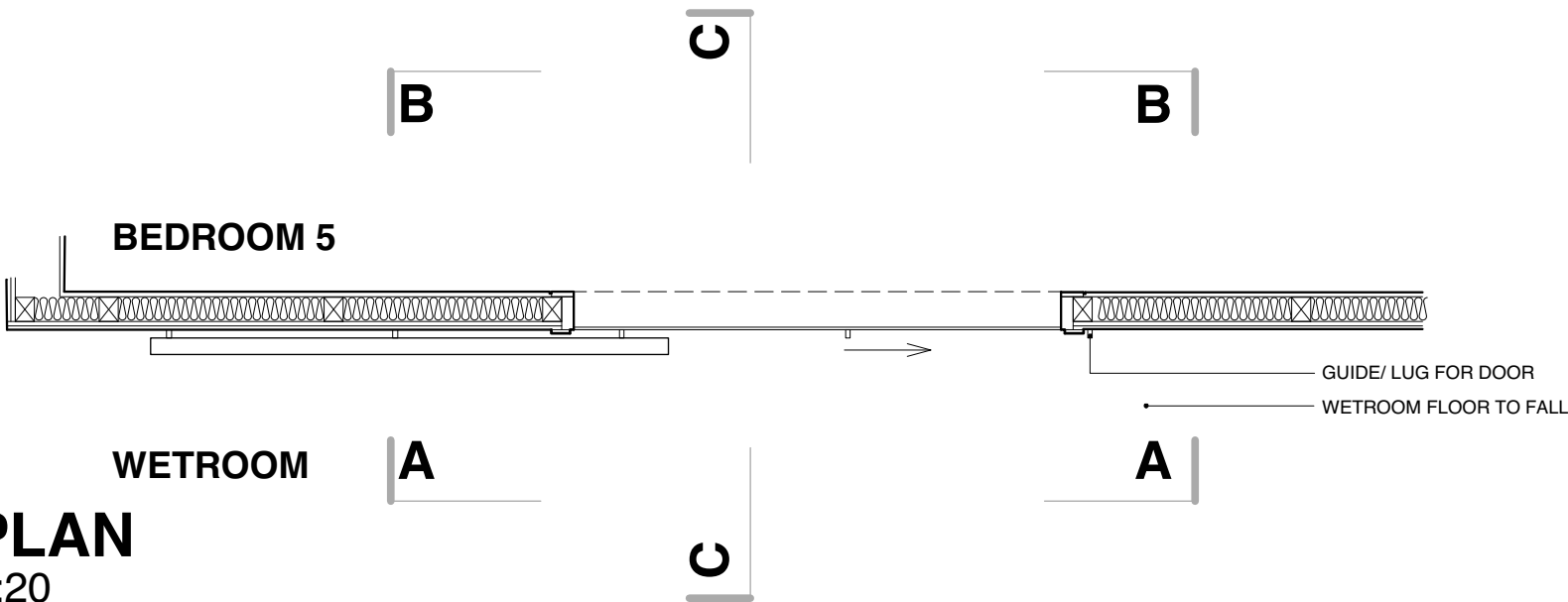
ELEVATION AA
1:20



ELEVATION BB
1:20



SECTION CC
1:20



PLAN
1:20

Lisa Shell
architects

EG2 Norway Wharf, 24 Hertford Road, N1 5QT
T. 020 7275 7773 E. mail@lisashellarchitects.co.uk

www.lisashellarchitects.co.uk

Director: Lisa Shell RIBA Registered in England No. 5000138
Registered office: Ross House, Stow-on-the-Wold, Glos. GL54 1AF

REVISIONS/ ISSUE

04/10/2017
ISSUE TO PLANNING
FOR APPROVAL

MORETON HOUSE N6

BASEMENT

WETROOM DOOR D008
MRT/CO/202

1 : 2 0 @ A 3

DO NOT SCALE FROM THIS DRAWING REFER ALL DISCREPANCIES TO ARCHITECT

PHOTOS



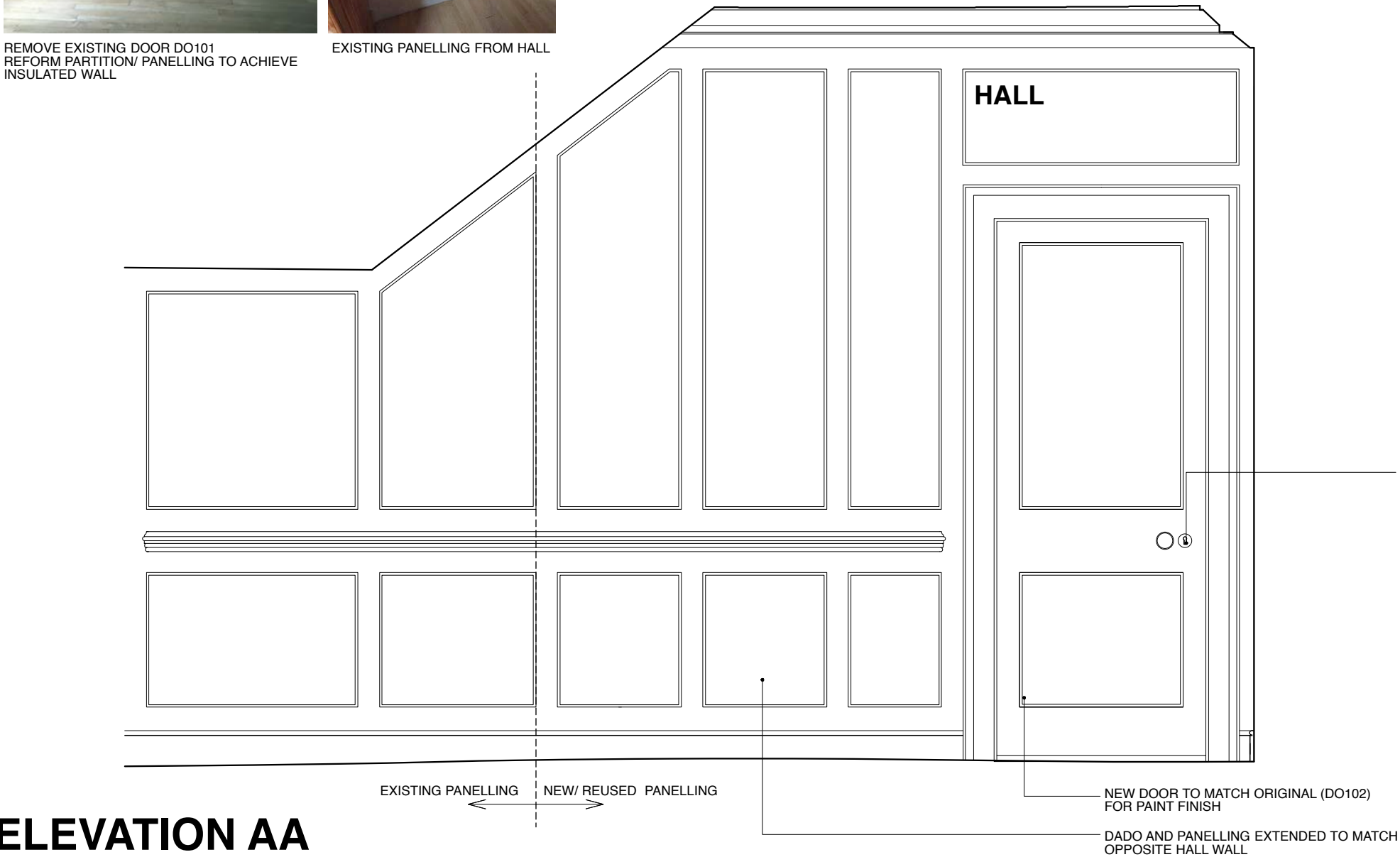
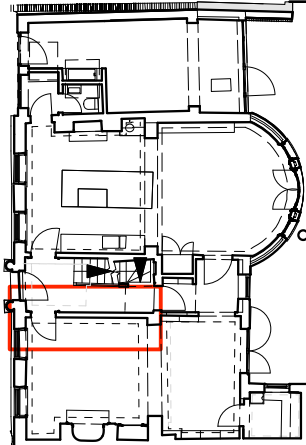
REMOVE EXISTING DOOR D0101
REFORM PARTITION/ PANELLING TO ACHIEVE
INSULATED WALL



EXISTING PANELLING FROM HALL

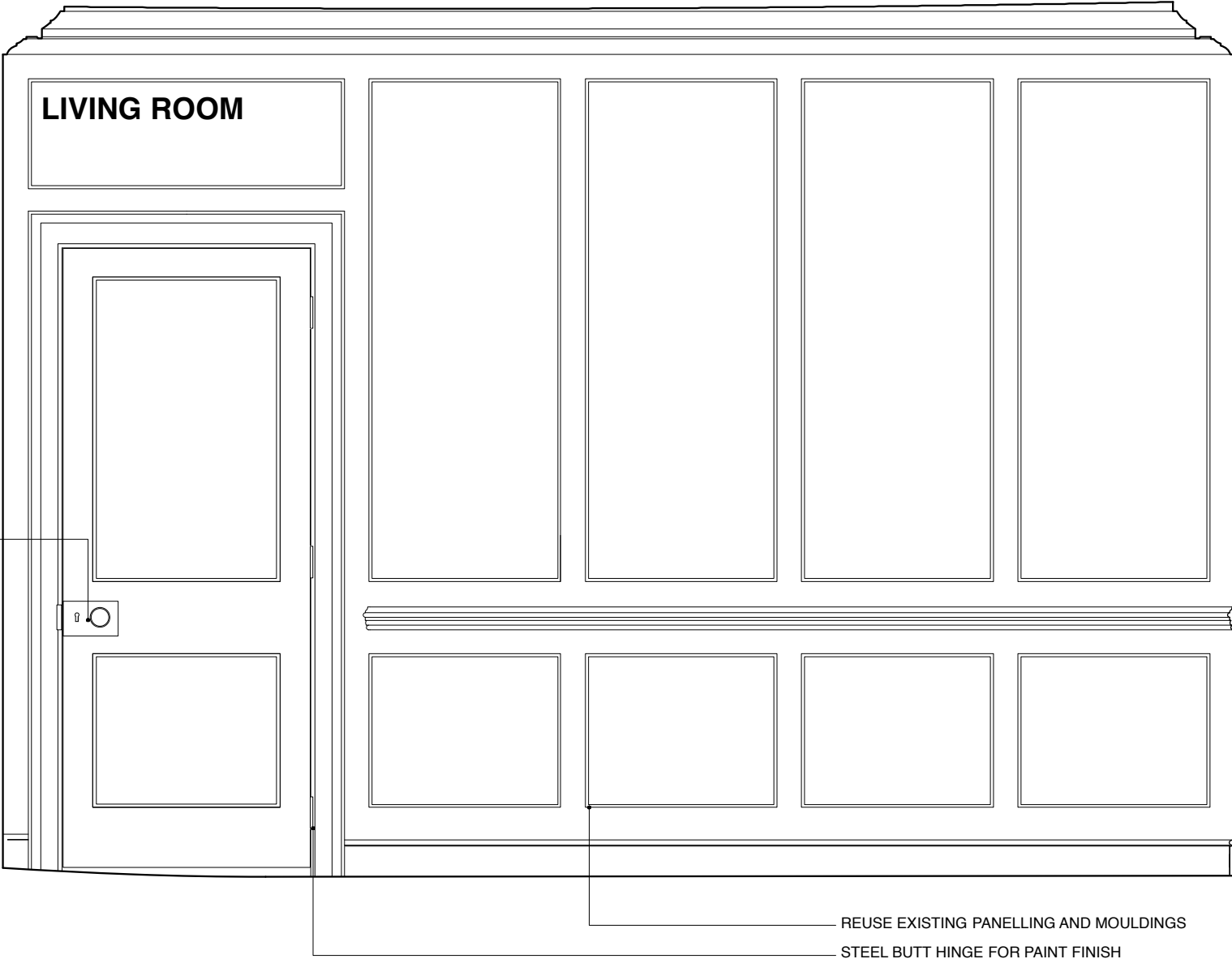


EXISTING PANELLING TO MATCH



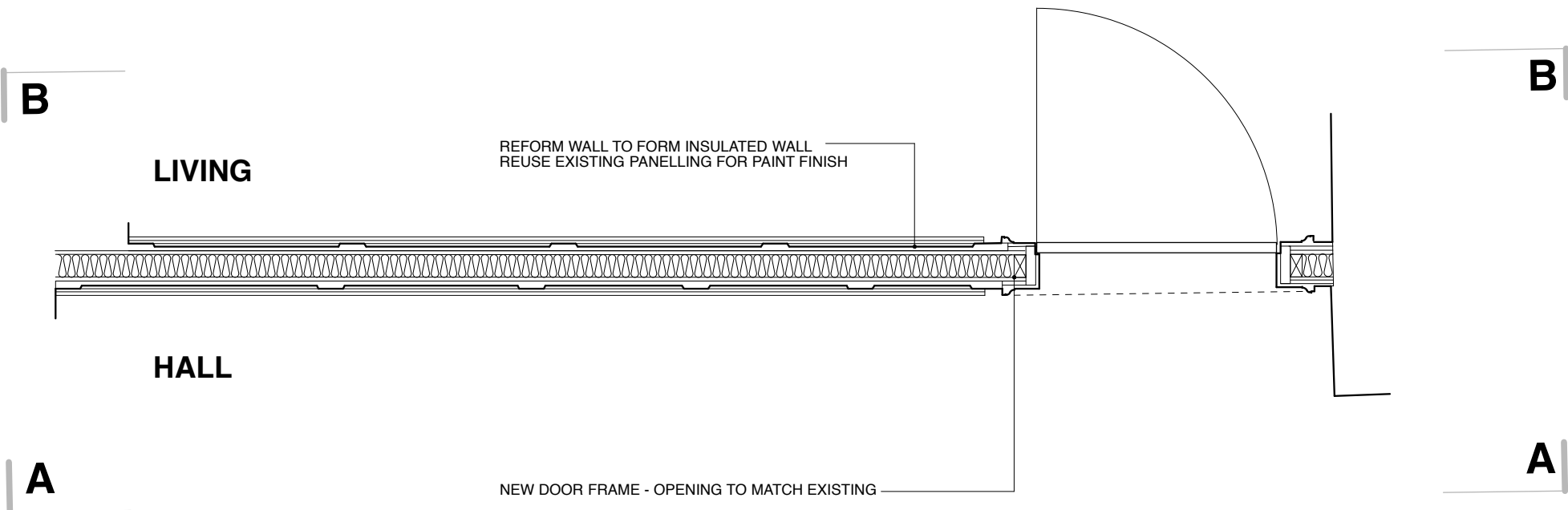
ELEVATION AA

1:20



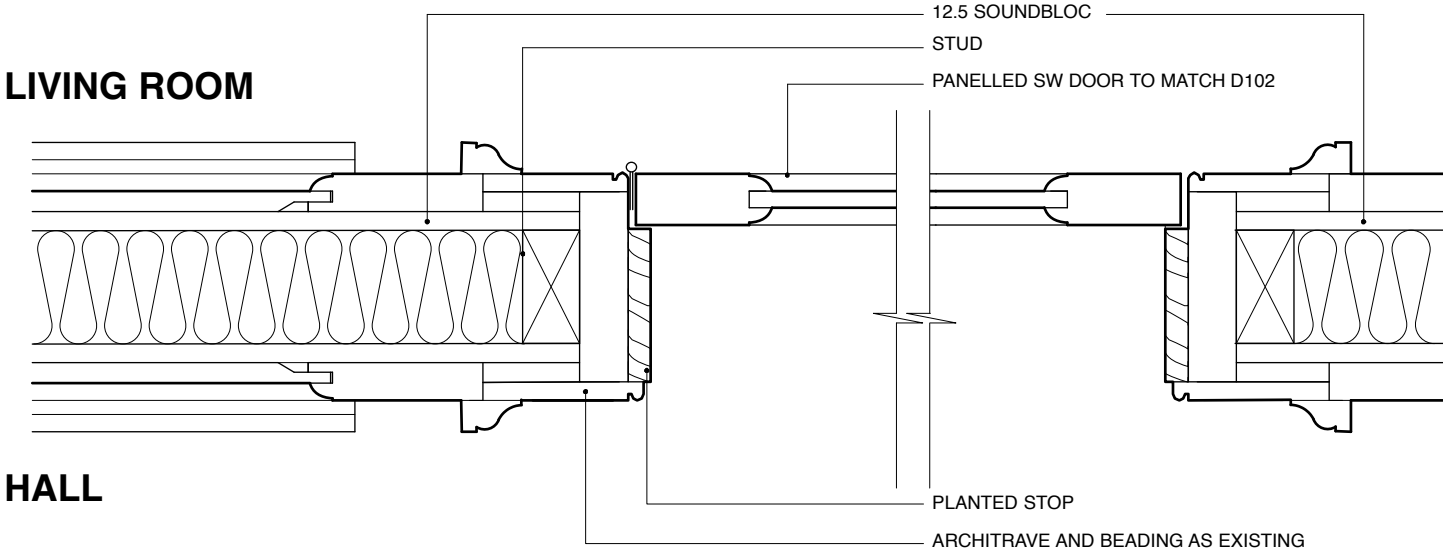
ELEVATION BB

1:20



PLAN

1:20



DETAIL PLAN 1:5

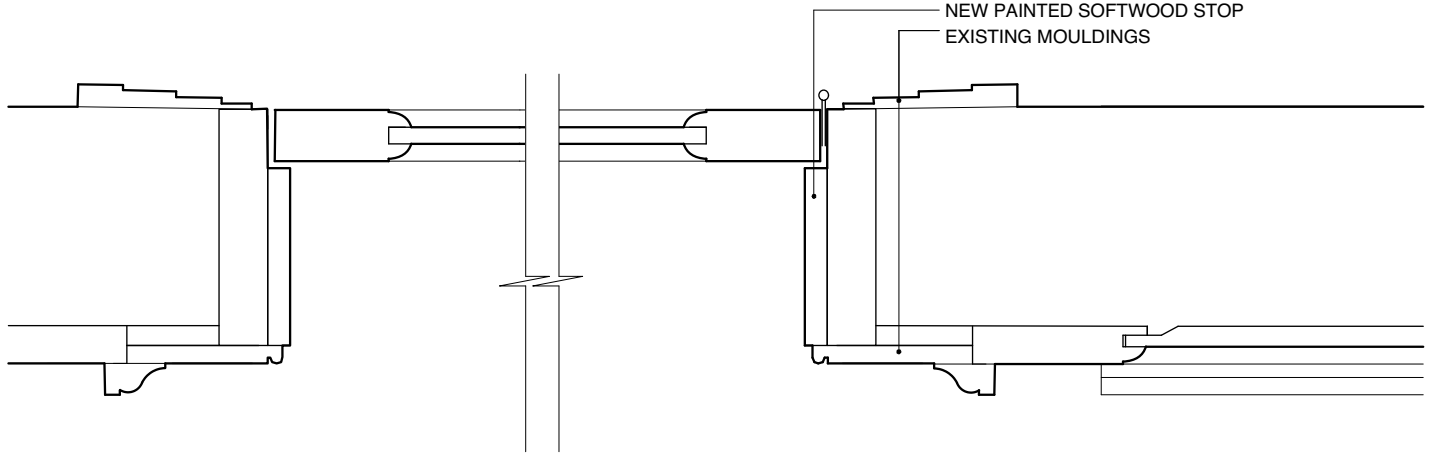
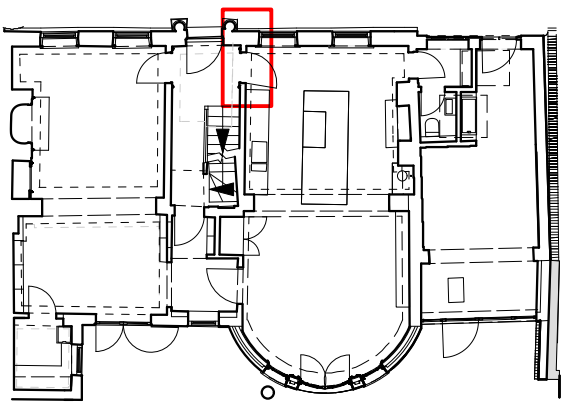
Lisa Shell
architects

EGGS Noisy Wharf, 88 Hertford Road, N1 6DT
T: 020 7070 7720 E: info@lisashellarchitects.co.uk
www.lisashellarchitects.co.uk
Lisa Shell Architects, Registered in England No. 02055555
Registered Architect, London No. 6704, 02055555

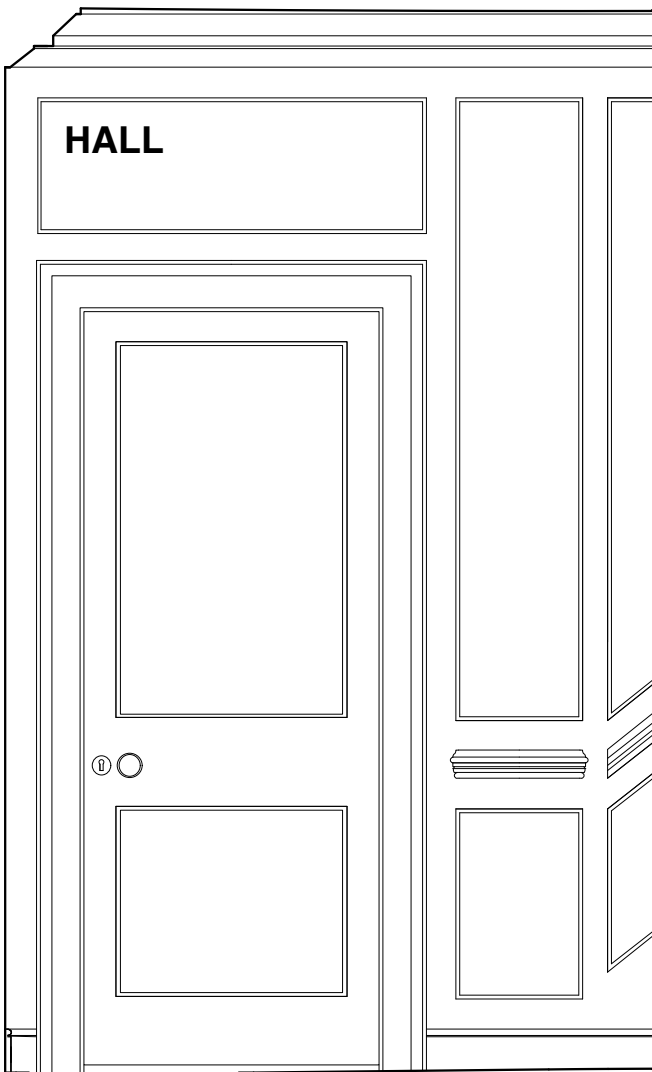
REVISIONS/ ISSUE
04/10/2017
ISSUE TO PLANNING
FOR APPROVAL

MORETON HOUSE N6

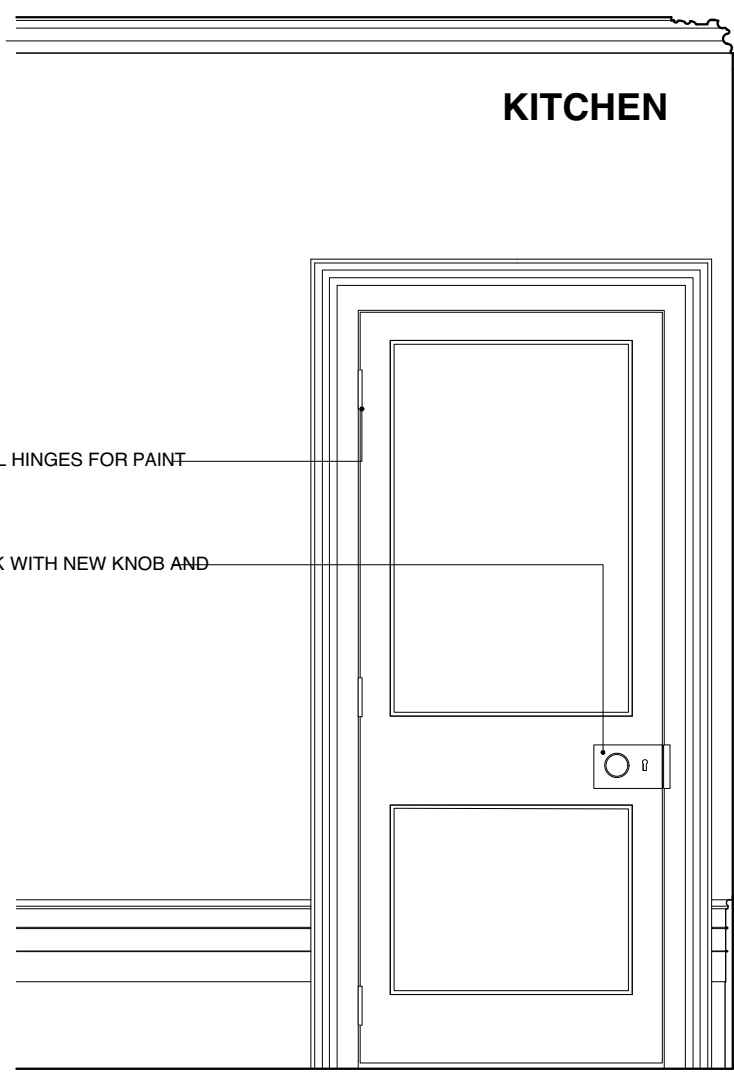
GROUND FLOOR
LIVING ROOM PANELLED WALL AND DOOR D117
M R T / C O / 2 1 1
1:20 / 1:5 @ A2
DO NOT SCALE FROM THIS DRAWING REFER ALL DISCREPANCIES TO ARCHITECT



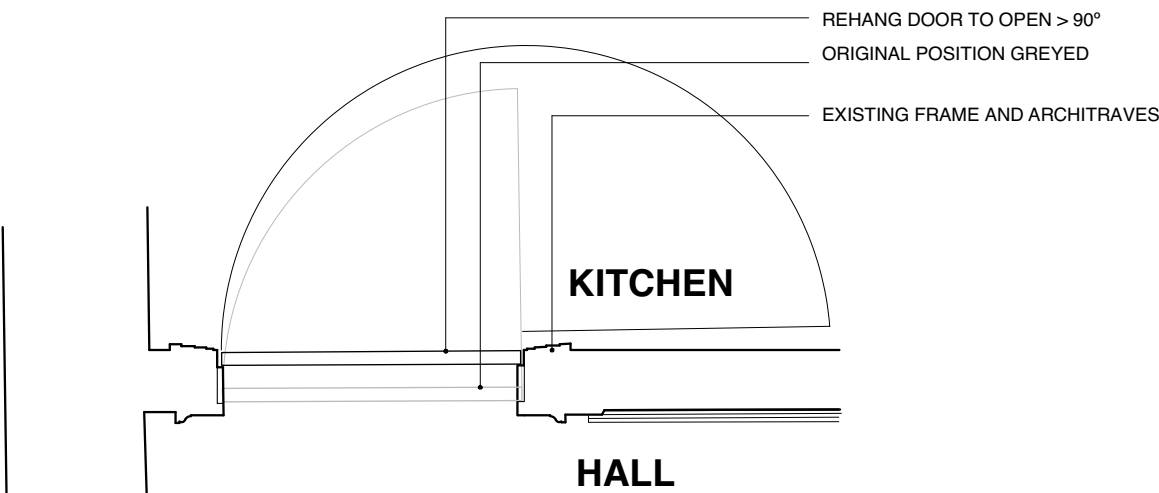
DETAIL PLAN 1:5



ELEVATION AA
1:20



ELEVATION BB
1:20



PLAN
1:20



EXISTING D02 FROM KITCHEN

Lisa Shell
architects

EG2 Norway Wharf, 24 Hertford Road, N1 5QT
T. 020 7275 7773 E. mail@lisashellarchitects.co.uk

www.lisashellarchitects.co.uk

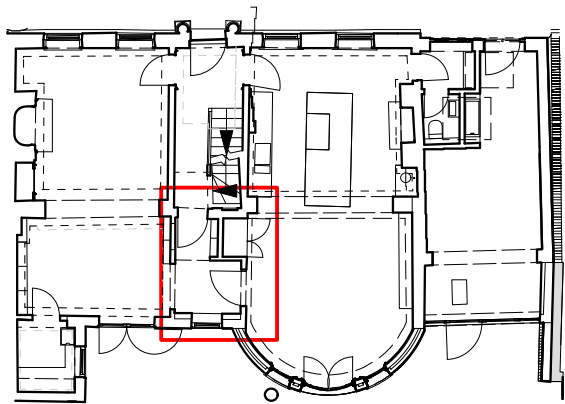
Director: Lisa Shell RIBA Registered in England No. 5000138
Registered office: Ross House, Stow-on-the-Wold, Glos. GL54 1AF

REVISIONS/ ISSUE
04/10/2017
ISSUE TO PLANNING
FOR APPROVAL

MORETON HOUSE N6

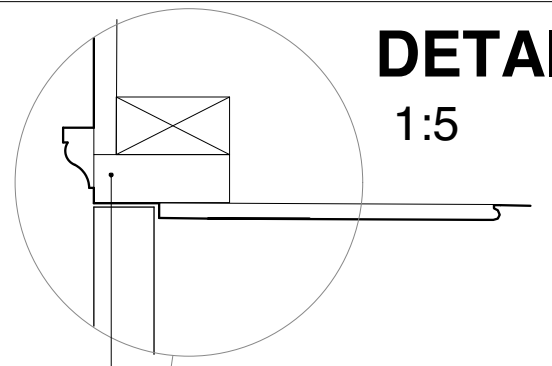
GROUND FLOOR
KITCHEN DOOR D102
MRT/CO/212

1:20/1:5 @ A3
DO NOT SCALE FROM THIS DRAWING REFER ALL DISCREPANCIES TO ARCHITECT



DETAIL PLAN

1:5

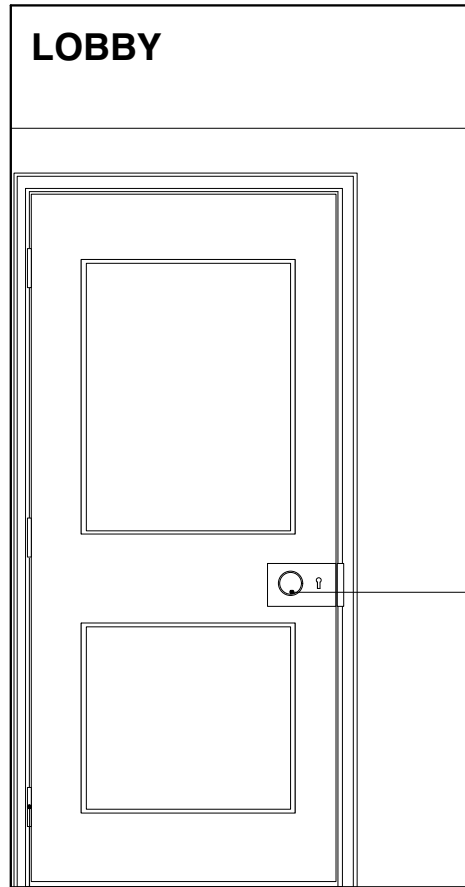


DETAIL

1:5

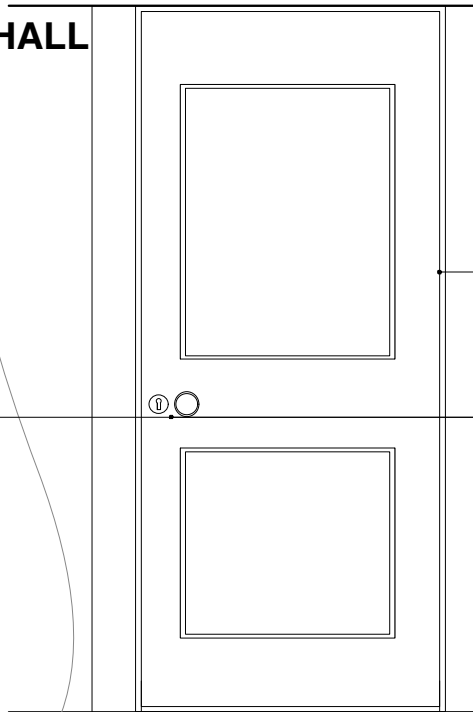
D115

LOBBY



STEEL BUTT HINGES FOR PAINT FINISH

HALL



NEW LINING AND
ARCHITRAVE TO MATCH
ADJUST EXISTING DOOR
LINING TO SUIT

LOBBY

HALL

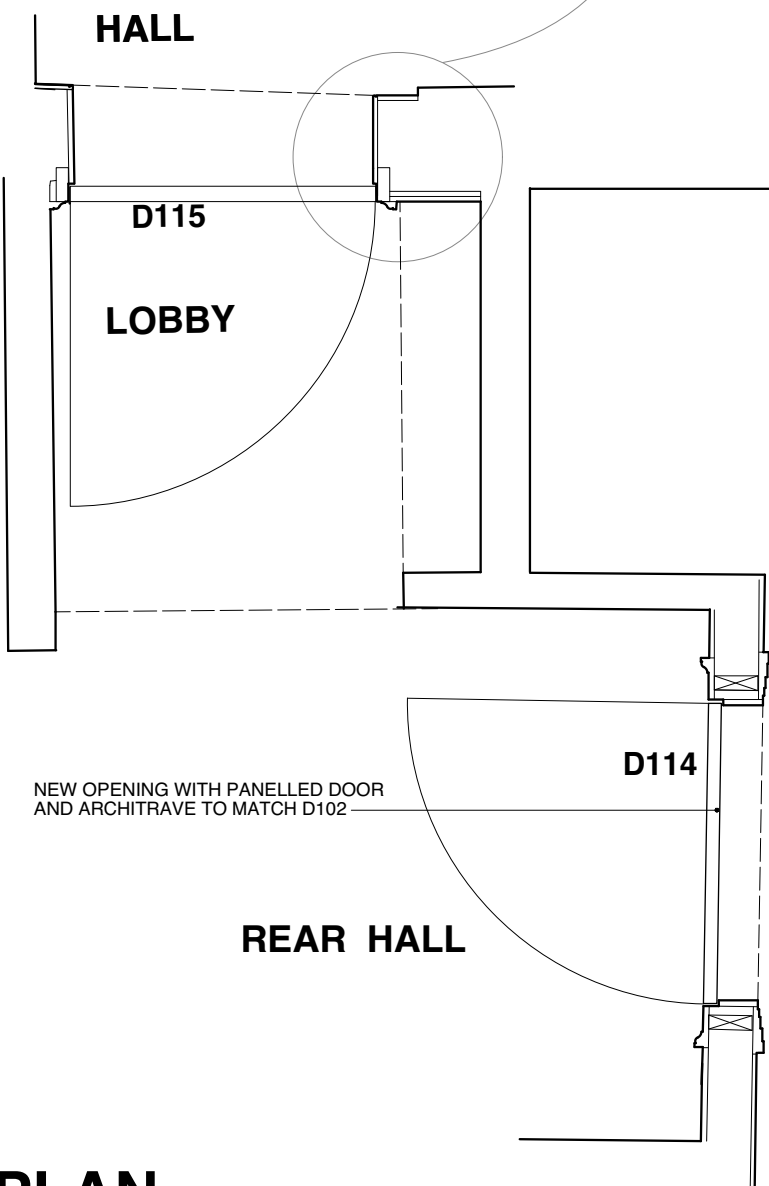
NEW FRAME AND LINING AT
HEAD WHERE STAIR ALTERED

EXISTING DOOR LINING
USED AS STOP WITH NEW
ARCHITRAVE AND LEAF

RIM LOCK TO MATCH WITH NEW KNOB

NEW PANELLED DOOR TO
MATCH ORIGINAL TO DETAIL

HALL



D115

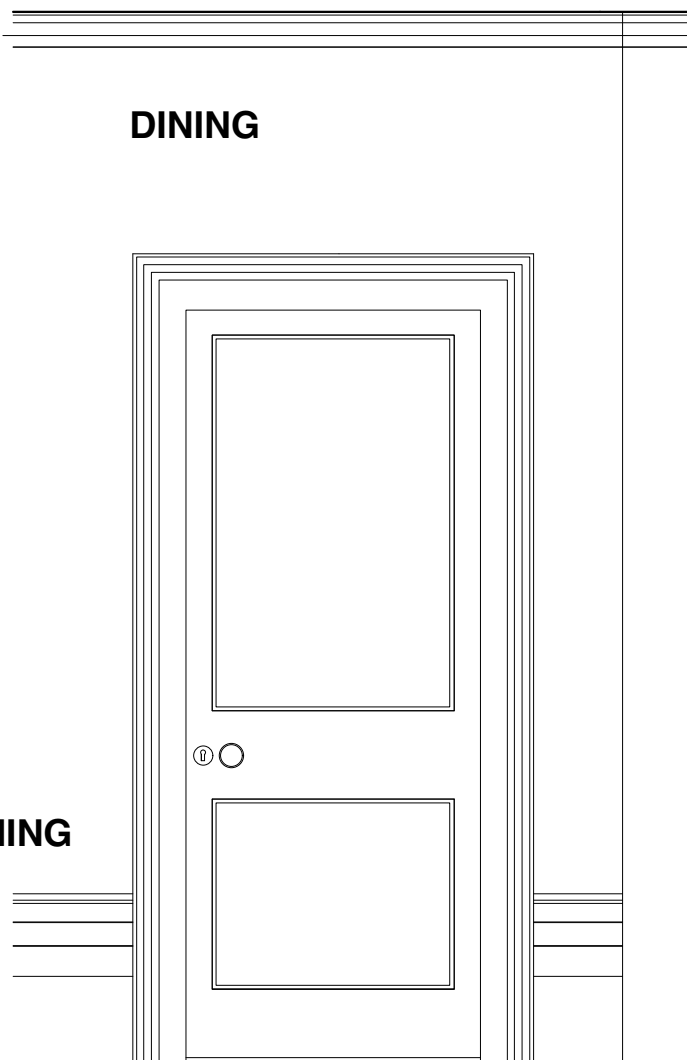
LOBBY

D114

NEW OPENING WITH PANELLED DOOR
AND ARCHITRAVE TO MATCH D102

REAR HALL

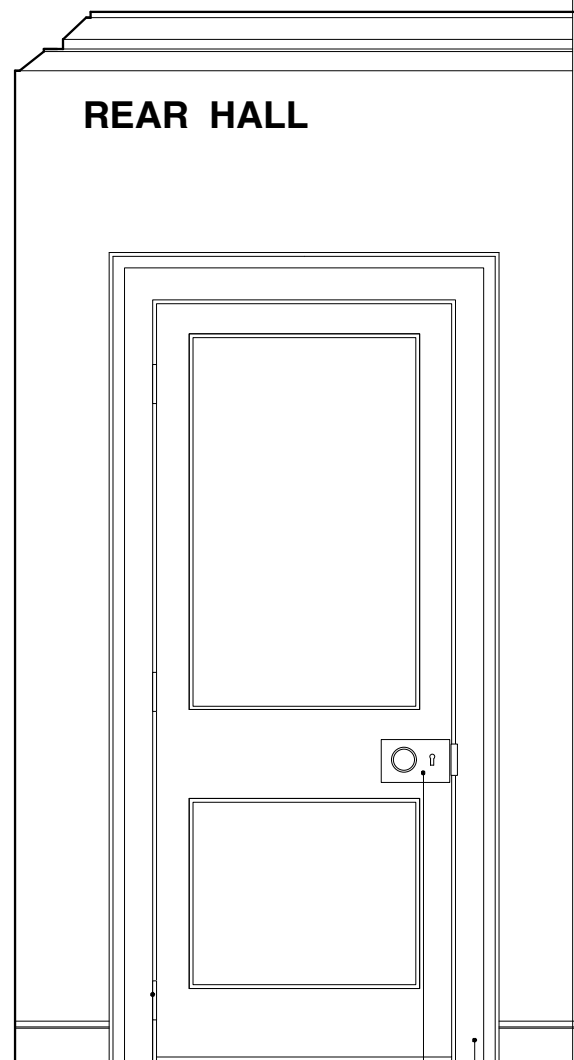
DINING



D114

STEEL BUTT HINGES FOR PAINT FINISH

REAR HALL



RIM LOCK TO MATCH EXISTING
ARCHITRAVE TO MATCH EXISTING

PLAN

1:20

Lisa Shell
architects

EG2 Norway Wharf, 24 Hertford Road, N1 5QT
T. 020 7275 7773 E. mail@lisashellarchitects.co.uk

www.lisashellarchitects.co.uk

Director: Lisa Shell RIBA Registered in England No. 5000138
Registered office: Rose House, Stow-on-the-Wold, Glos. GL54 1AF

REVISIONS/ ISSUE

04/10/2017
ISSUE TO PLANNING
FOR APPROVAL

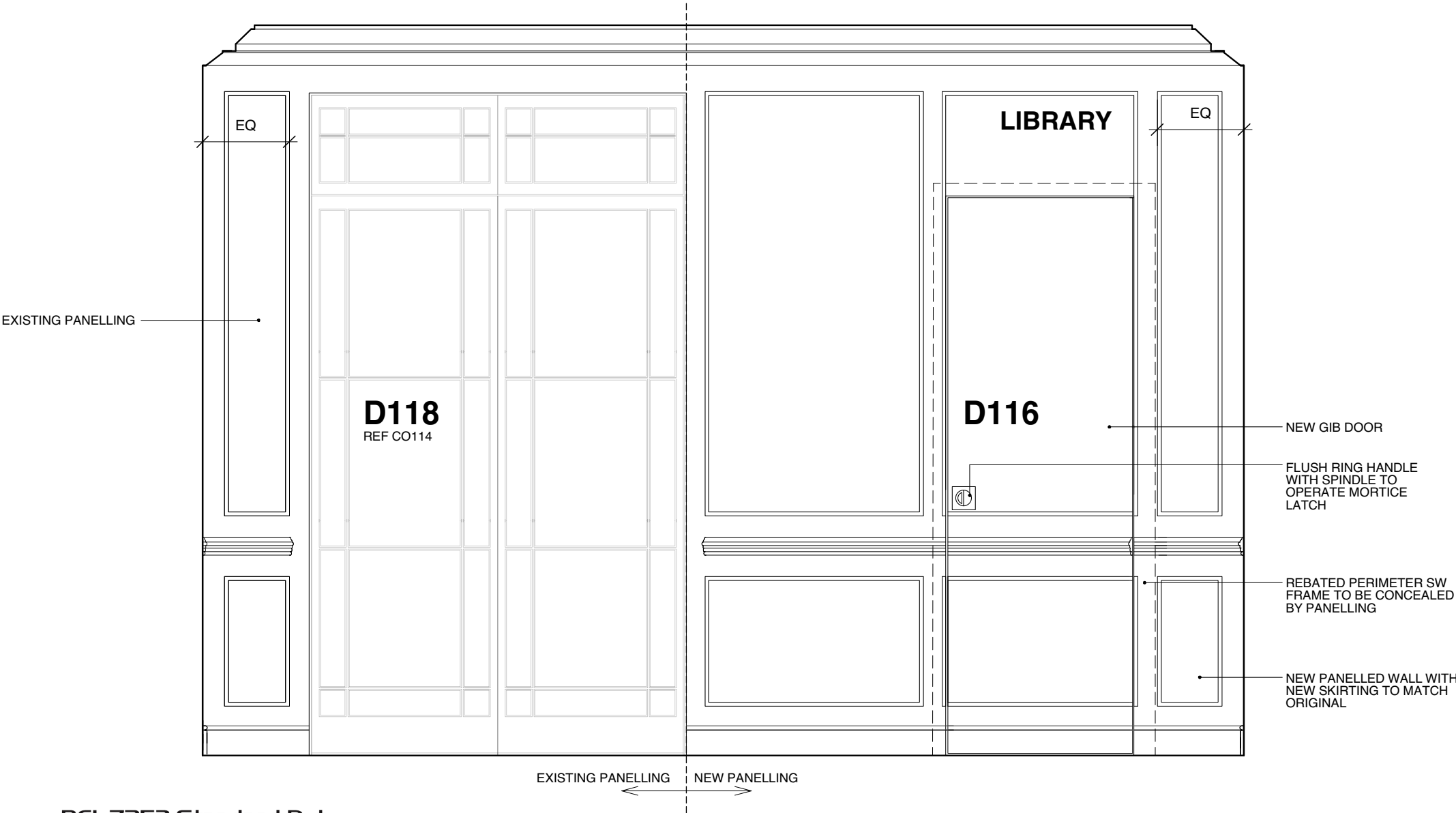
MORETON HOUSE N6

GROUND FLOOR

**REAR HALL & LOBBY DOORS
D114 & 115
MRT/CO/213**

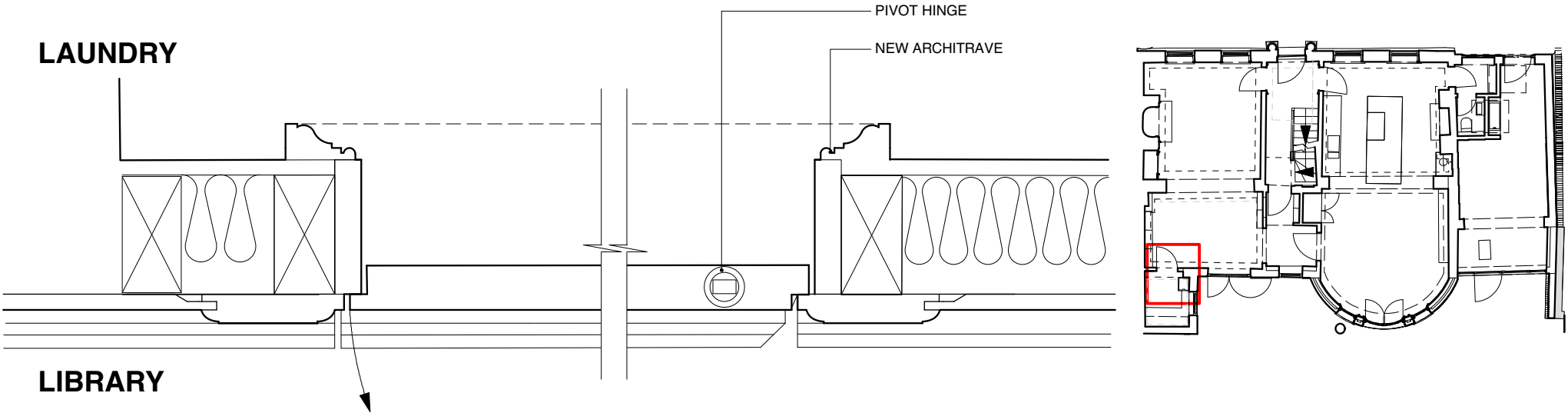
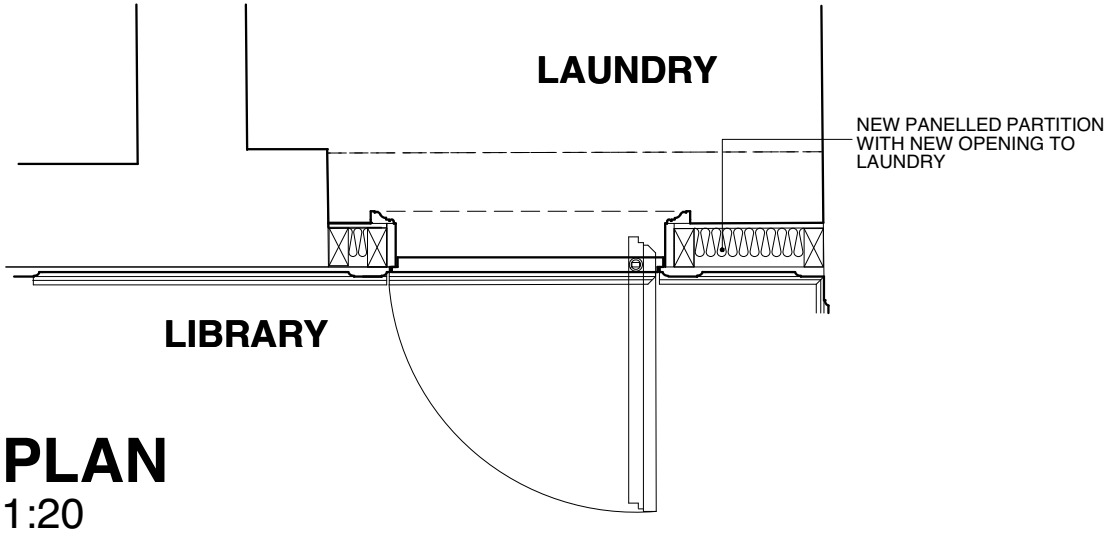
1:20 @ A3

DO NOT SCALE FROM THIS DRAWING REFER ALL DISCREPANCIES TO ARCHITECT



**REL.7253 Standard Duty
Centre Hung Pivot Set**

- Centre hung pivot set consisting of a base plate mounted **REL.7253** bottom pivot and a head frame mounted **REL.7253** top pivot
- Door thickness minimum 44mm
- Pivot distance 44mm minimum from the jamb to the centerline of the pivot pin
- Requires a radius to the heel edge of the door - 41mm minimum recommended
- Clearance from the bottom edge of the door to the floor is adjustable from 5mm to 19mm by varying the depth of the mortice in the bottom rail of the door
- For clearance distances in excess of 19mm consult the sales office
- Maximum Load 136 kilos



DETAIL PLAN 1:5

Lisa Shell
architects

EG2 Norway Wharf, 24 Hertford Road, N1 5QT
T. 020 7275 7773 E. mail@lisashellarchitects.co.uk
www.lisashellarchitects.co.uk

Director: Lisa Shell RIBA Registered in England No. 5000138
Registered office: Rose House, Stow-on-the-Wold, Glos. GL54 1AF

REVISIONS/ ISSUE

04/10/2017
ISSUE TO PLANNING
FOR APPROVAL

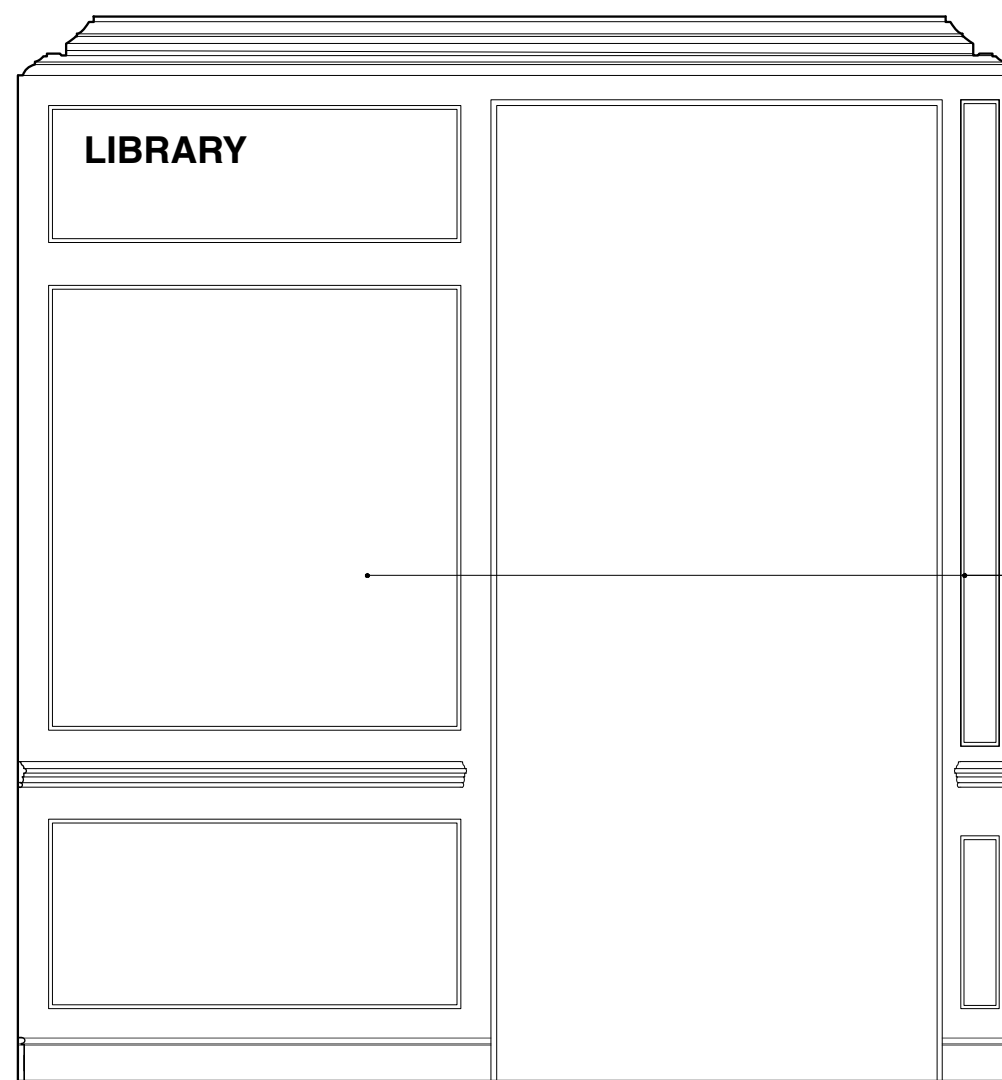
MORETON HOUSE N6

GROUND FLOOR
LAUNDRY DOOR D116
MRT/CO/214

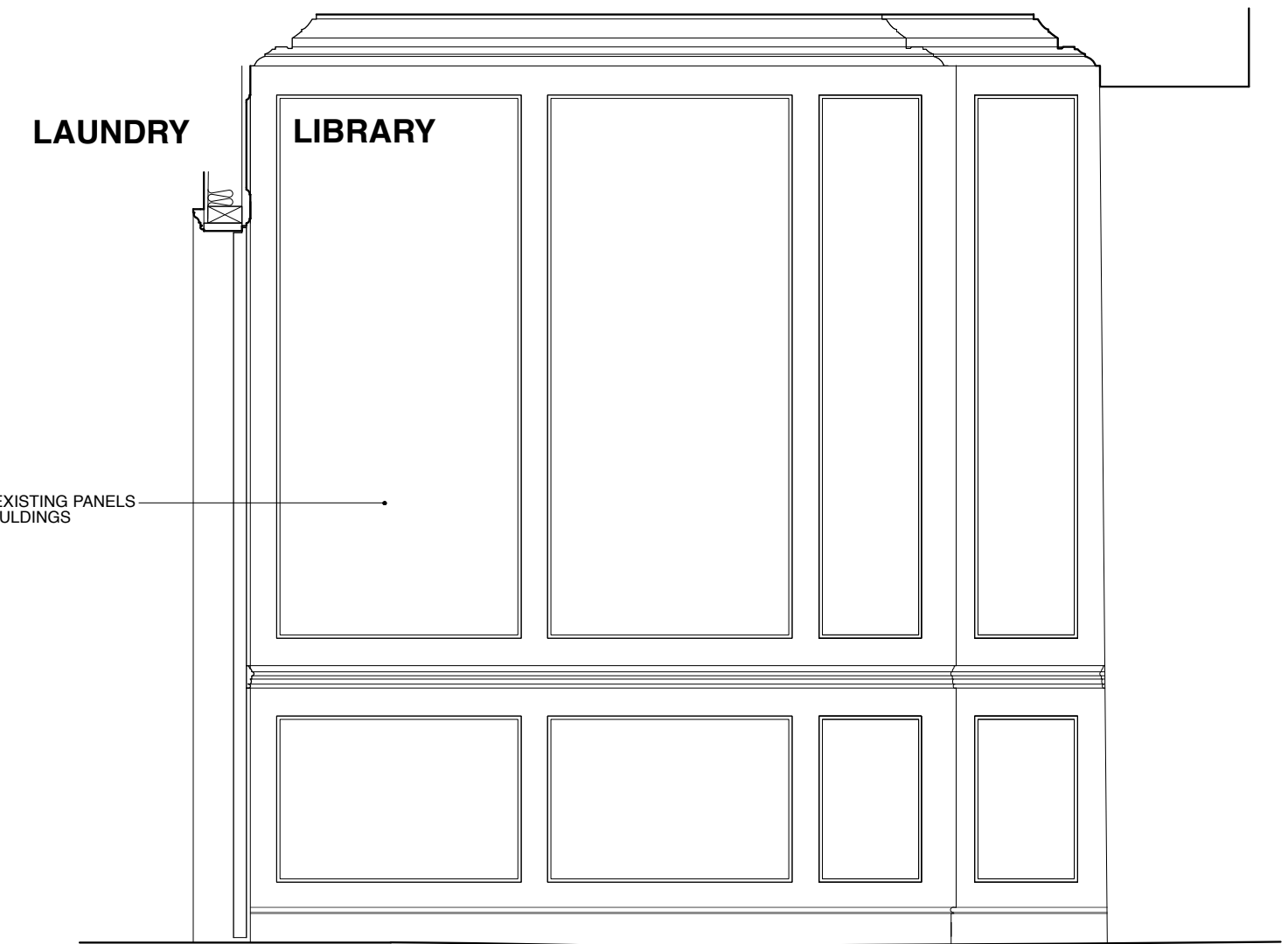
1:20/1:5 @ A3
DO NOT SCALE FROM THIS DRAWING REFER ALL DISCREPANCIES TO ARCHITECT



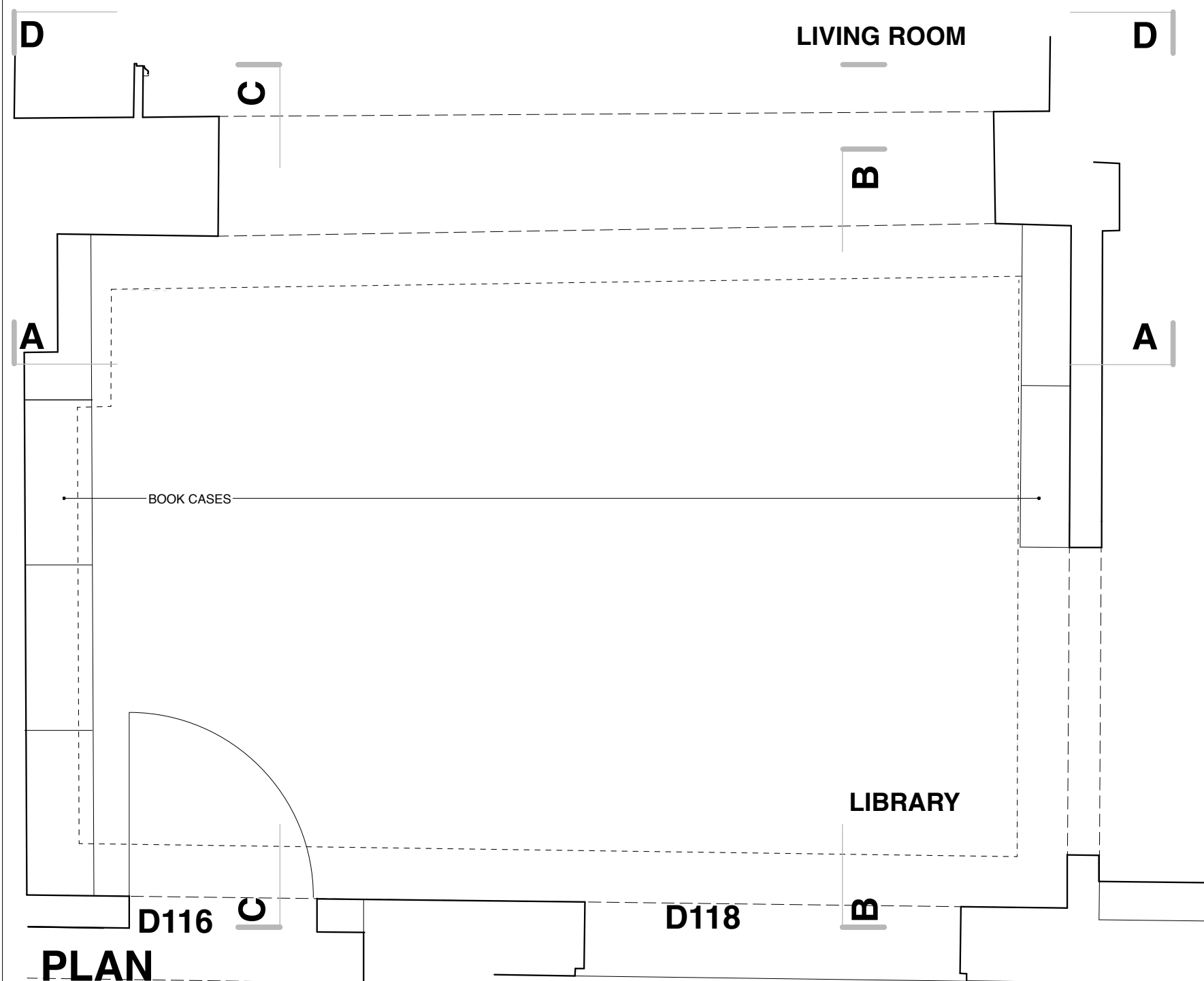
EXISTING PANELS AND
MOULDINGS RETAINED



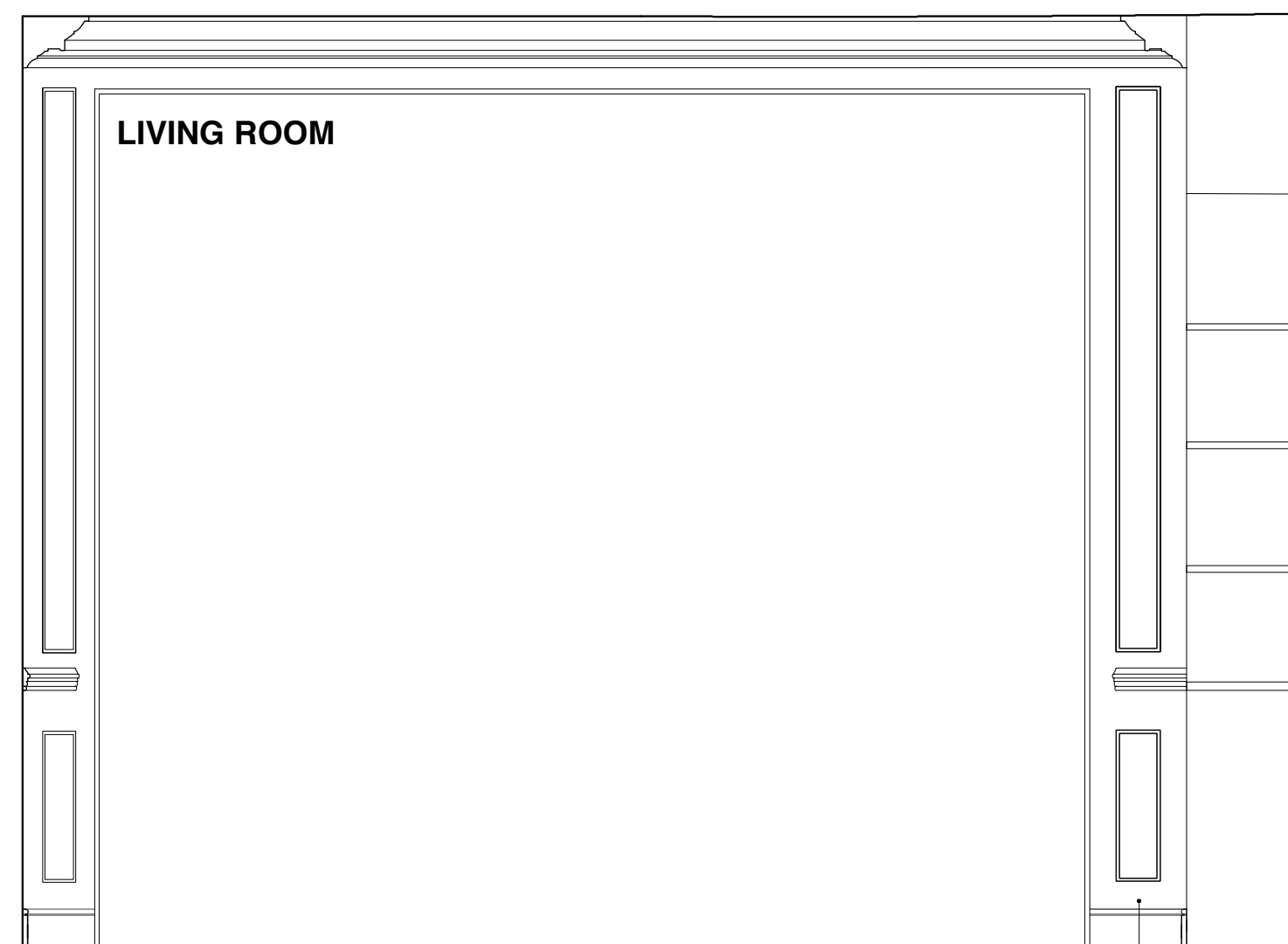
ELEVATION BB



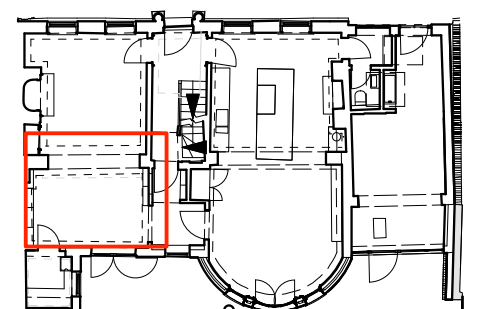
ELEVATION CC

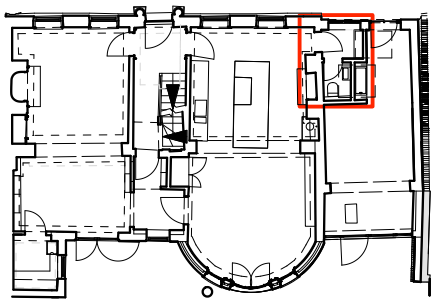


PLAN

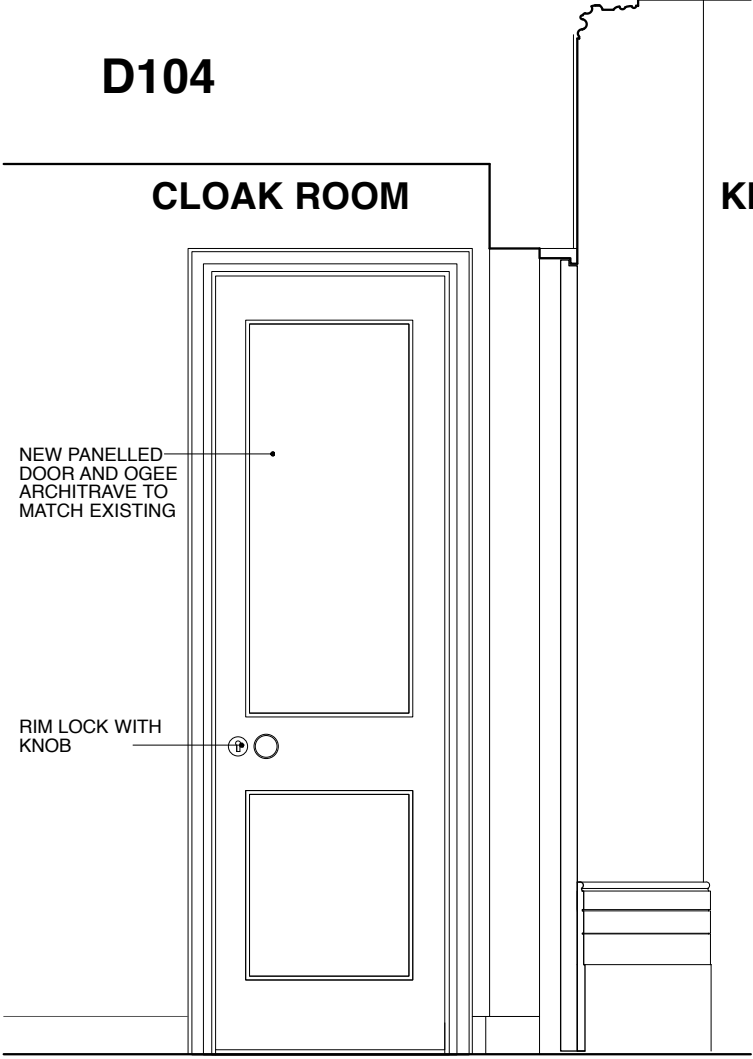


ELEVATION DD



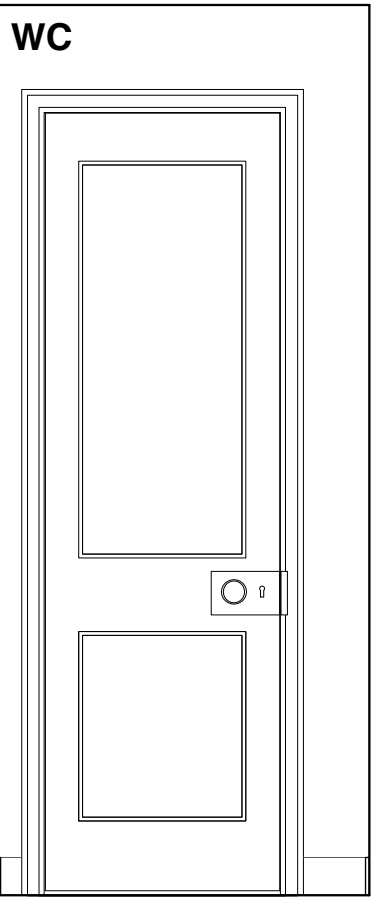


D104

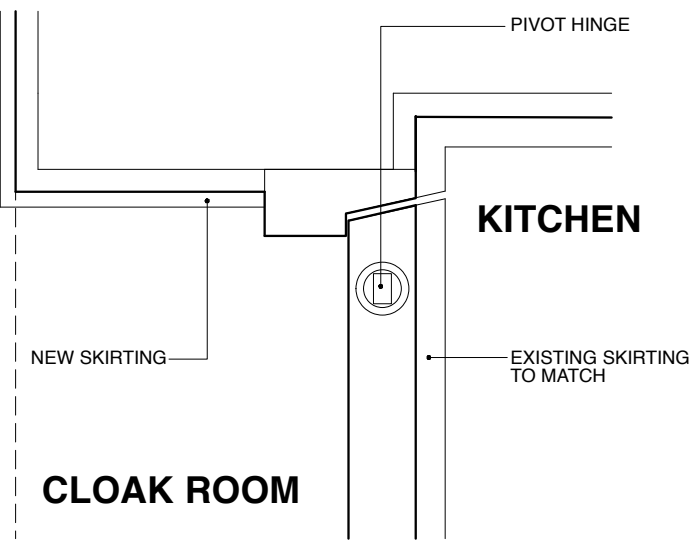


KITCHEN

WC



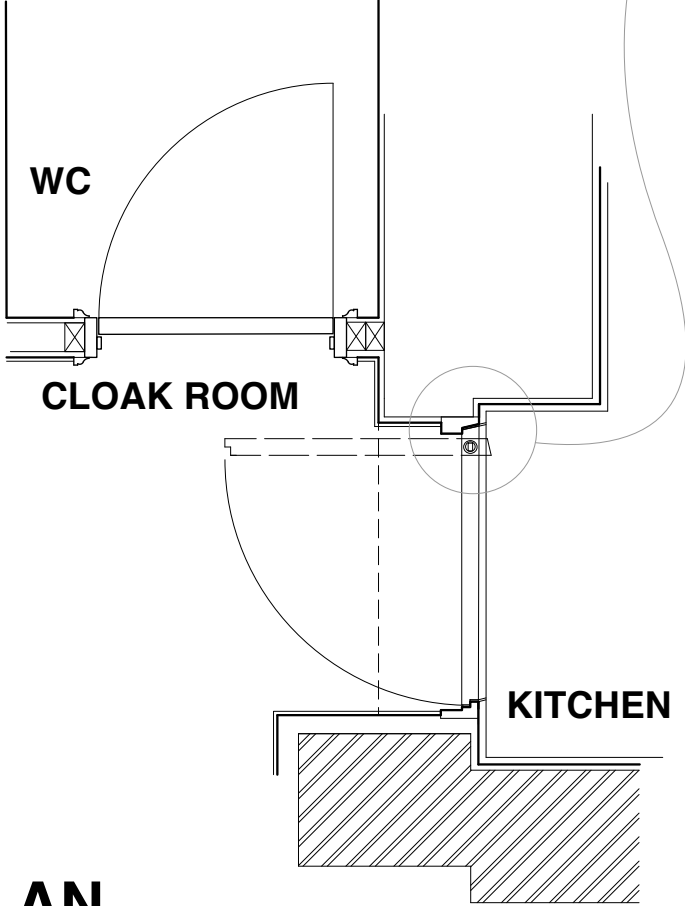
DETAIL PLAN D105
1:5



KITCHEN

CLOAK ROOM

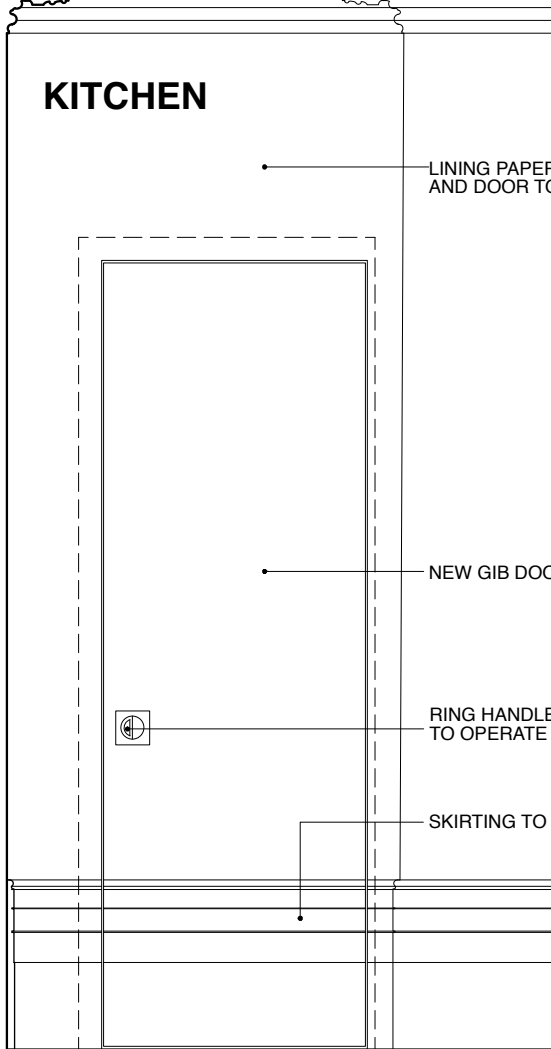
D105



WC

CLOAK ROOM

KITCHEN



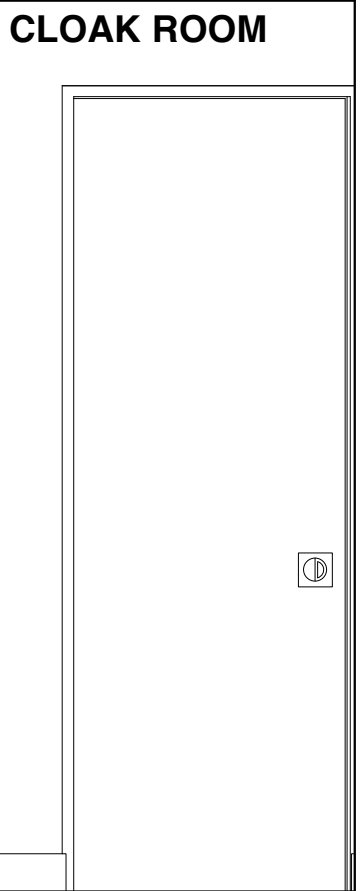
KITCHEN

LINING PAPER AND PAINT WALL AND DOOR TO CONCEAL LINING

NEW GIB DOOR

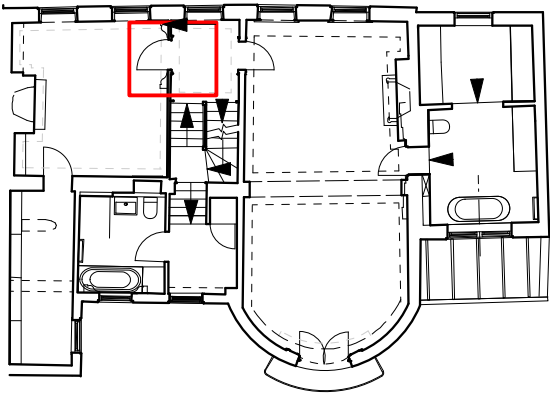
RING HANDLE WITH SPINDLE TO OPERATE MORTICE LATCH

SKIRTING TO MATCH EXISTING



CLOAK ROOM

PLAN
1:20



LOCATION PLAN

1:200

PHOTOS



FROM BEDROOM



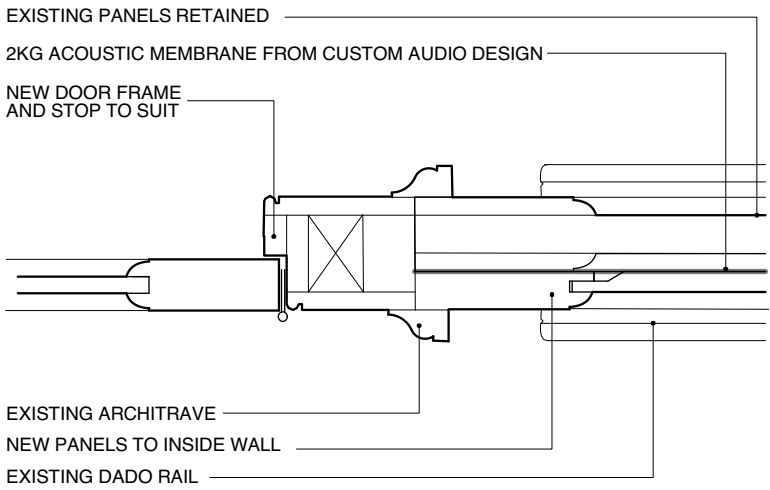
FROM LANDING



NEW PANELS TO MATCH
EXISTING

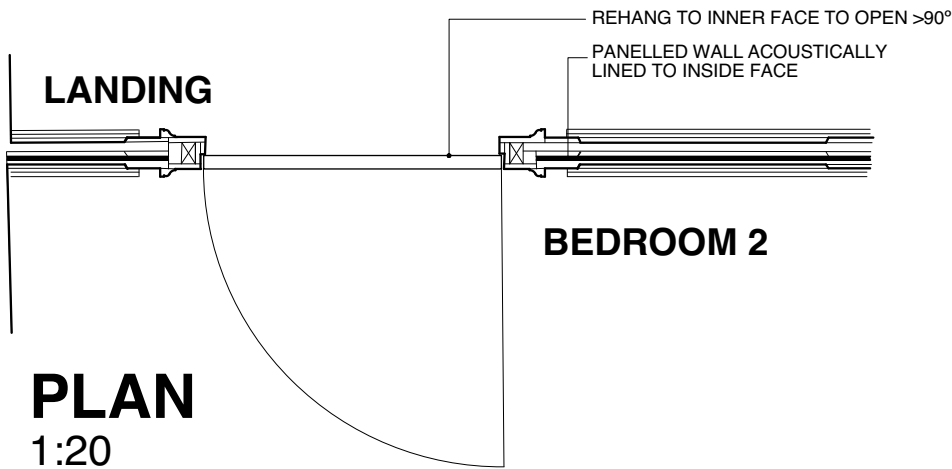
REMOVE AND REINSTATE
EXISTING DADO RAIL

REINSTATE SKIRTING



DETAIL PLAN

1:5



PLAN

1:20

Lisa Shell
architects

EG2 Norway Wharf, 24 Hertford Road, N1 5QT
T. 020 7275 7773 E. mail@lisashellarchitects.co.uk

www.lisashellarchitects.co.uk

Director: Lisa Shell RIBA Registered in England No. 5000138
Registered office: Rose House, Stow-on-the-Wold, Glos. GL54 1AF

REVISIONS/ ISSUE

04/10/2017
ISSUE TO PLANNING
FOR APPROVAL

PLEASE USE SCALE BAR TO TAKE MEASUREMENTS WHEN READING FROM PDFS



MORETON HOUSE N6

FIRST FLOOR

BEDROOM 2 PANELLED WALL & DOOR D200

MRT/CO/221

1:20/1:5 @ A3

DO NOT SCALE FROM THIS DRAWING

REFER ALL DISCREPANCIES TO ARCHITECT



FROM BEDROOM 2 / STUDY



ELEVATION AA

1:20

FRANK ALLART 1068 FLUSH
RING HANDLE WITH SPINDLE
TO OPERATE MORTICE LATCH;
IN UNLACQUERED BRASS

NEW GIB DOOR TO DETAIL IN NEW
OPENING SET IN EXISTING PANELLING;
SIZED TO SUIT PANELLING

PLAN

1:20

REVISIONS/ ISSUE

04/10/2017
ISSUE TO PLANNING
FOR APPROVAL

PLEASE USE SCALE BAR TO TAKE MEASUREMENTS WHEN READING FROM PDFS



MORETON HOUSE N6

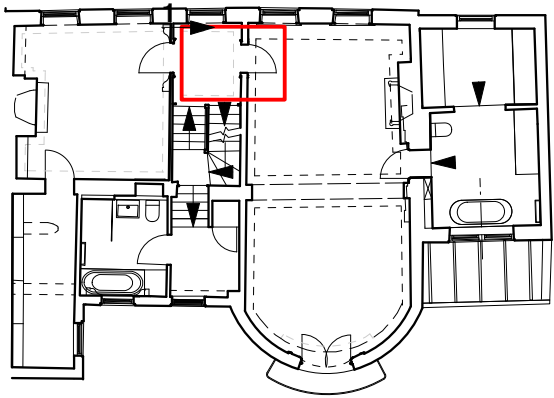
FIRST FLOOR

BEDROOM 2 / STUDY DOOR D208
M R T / C O / 2 2 2

1:20 @ A3

DO NOT SCALE FROM THIS DRAWING

REFER ALL DISCREPANCIES TO ARCHITECT



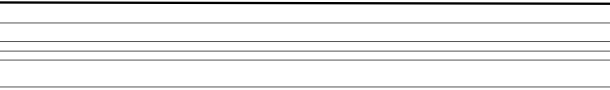
RETAIN EXISTING DOOR TO BEDROOM 1
REHANG TO OPEN >90°



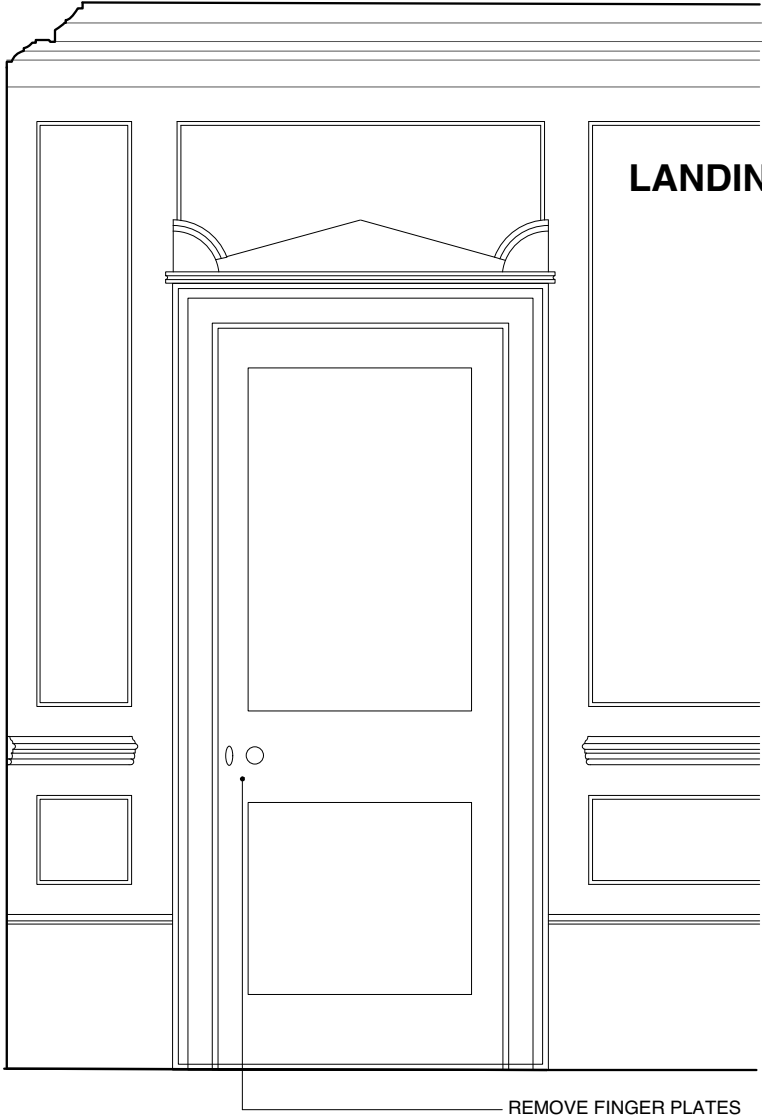
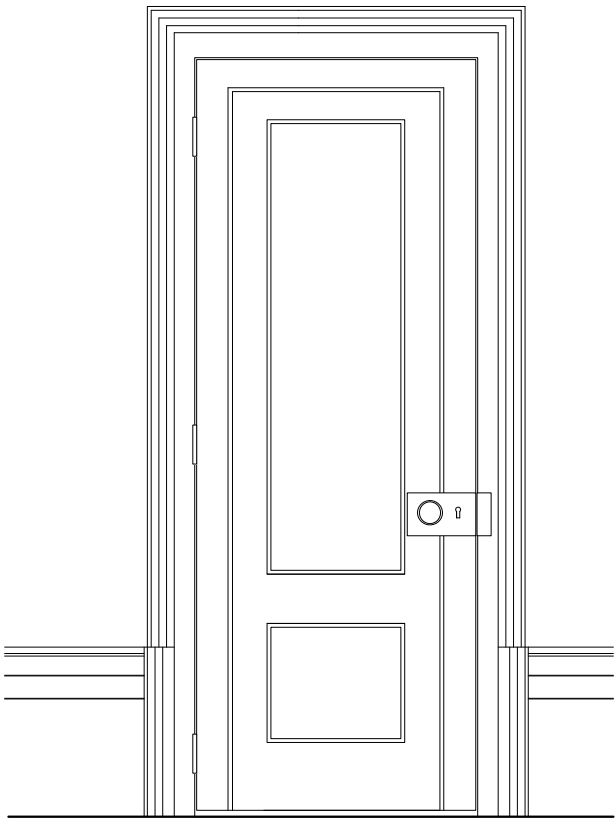
DETAIL OF DOOR TO BEDROOM 1



DOOR FROM BEDROOM

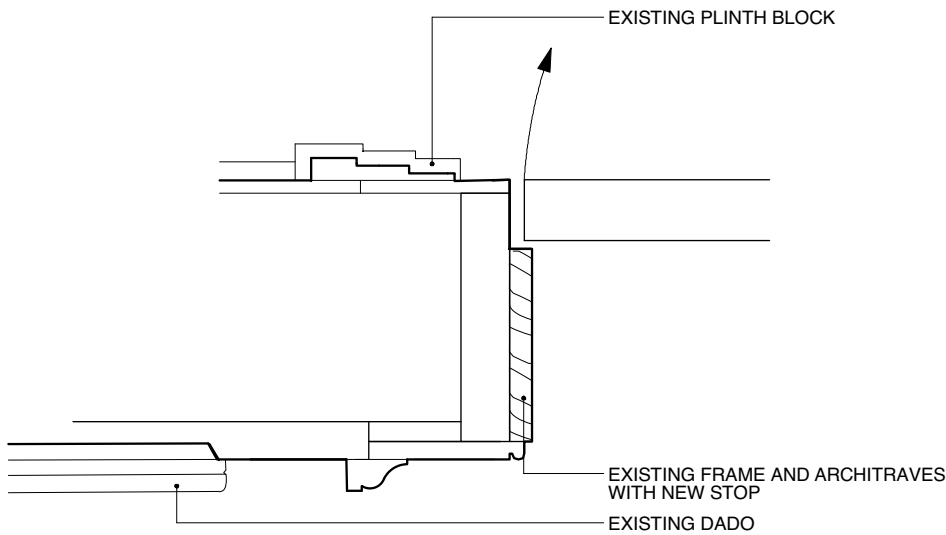


BEDROOM 1



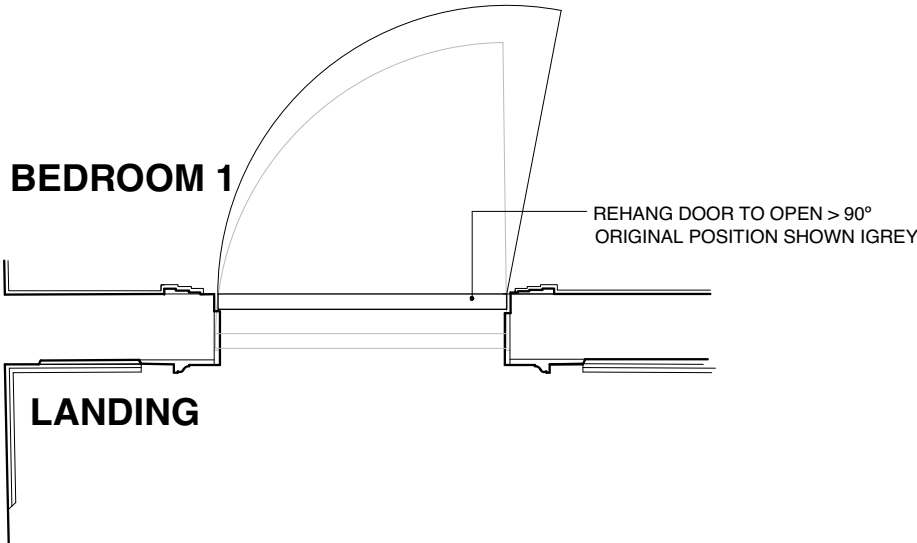
LANDING

REMOVE FINGER PLATES



EXISTING PLINTH BLOCK

EXISTING FRAME AND ARCHITRAVES
WITH NEW STOP
EXISTING DADO



BEDROOM 1

REHANG DOOR TO OPEN > 90°
ORIGINAL POSITION SHOWN IN GREY

LANDING

DETAIL PLAN

1:5

PLAN

1:20

Lisa Shell
architects

EG2 Norway Wharf, 24 Hertford Road, N1 5QT
T. 020 7275 7773 E. mail@lisashellarchitects.co.uk
www.lisashellarchitects.co.uk

Director: Lisa Shell RIBA Registered in England No. 5000138
Registered office: Rose House, Stow-on-the-Wold, Glos. GL54 1AF

REVISIONS/ ISSUE

04/10/2017
ISSUE TO PLANNING
FOR APPROVAL

PLEASE USE SCALE BAR TO TAKE MEASUREMENTS WHEN READING FROM PDFS



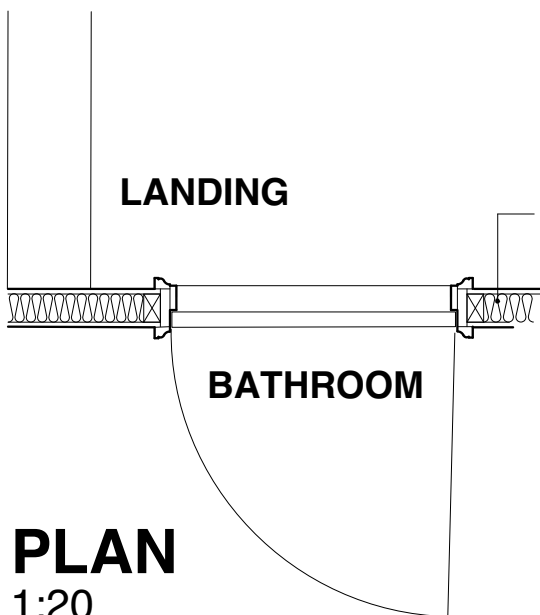
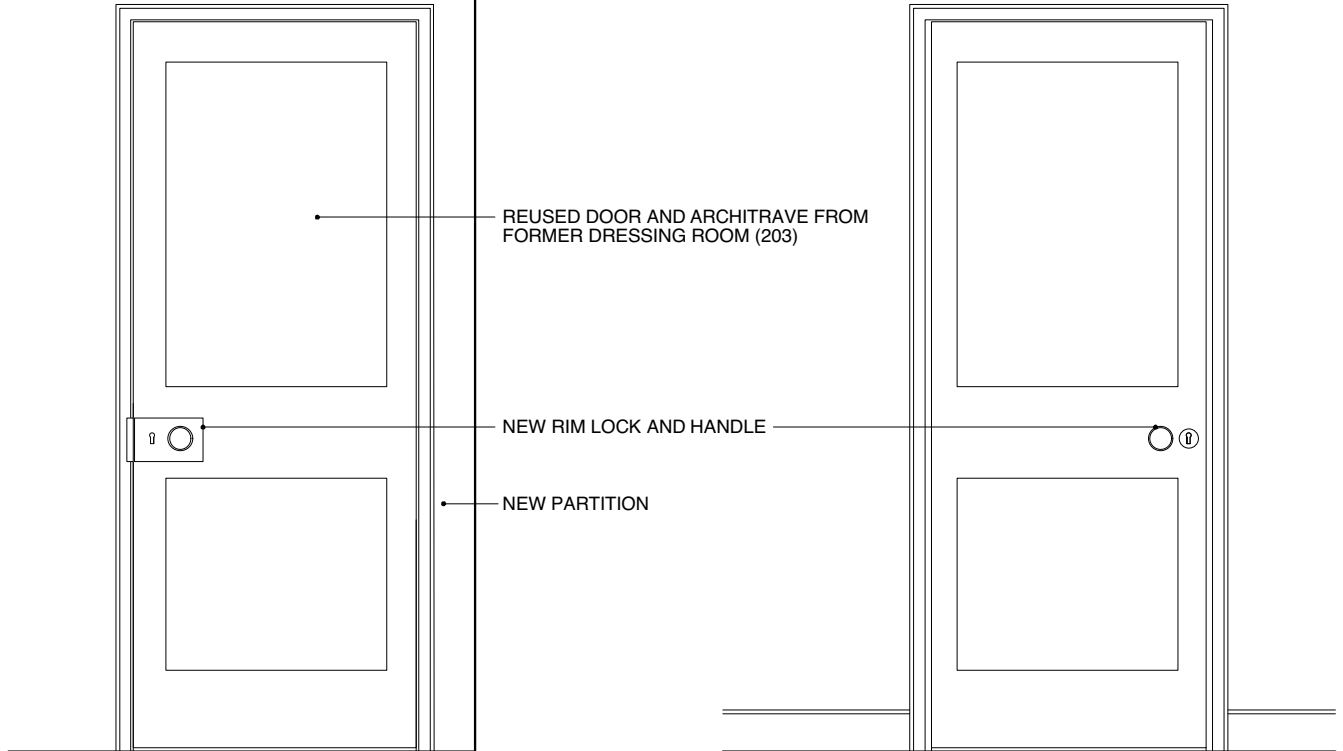
MORETON HOUSE N6

FIRST FLOOR
BEDROOM 1 DOOR D201
MRT/CO/223

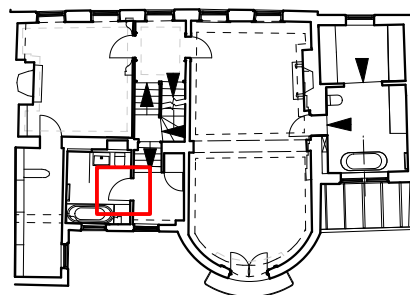
1:20/1:5 @ A3 DO NOT SCALE FROM THIS DRAWING
REFER ALL DISCREPANCIES TO ARCHITECT

BATHROOM

LANDING



FORM NEW PARTITION WITH OPENING
AND FRAME TO SUIT REUSED DOOR
AND ARCHITRAVE



EXISTING DOOR D203

PLAN
1:20

Lisa Shell
architects

EG2 Norway Wharf, 24 Hertford Road, N1 5QT
T. 020 7275 7773 E. mail@lisashellarchitects.co.uk

www.lisashellarchitects.co.uk

Director: Lisa Shell RIBA Registered in England No. 5000138
Registered office: Ross House, Stow-on-the-Wold, Glos. GL54 1AF

REVISIONS/ ISSUE

04/10/2017
ISSUE TO PLANNING
FOR APPROVAL

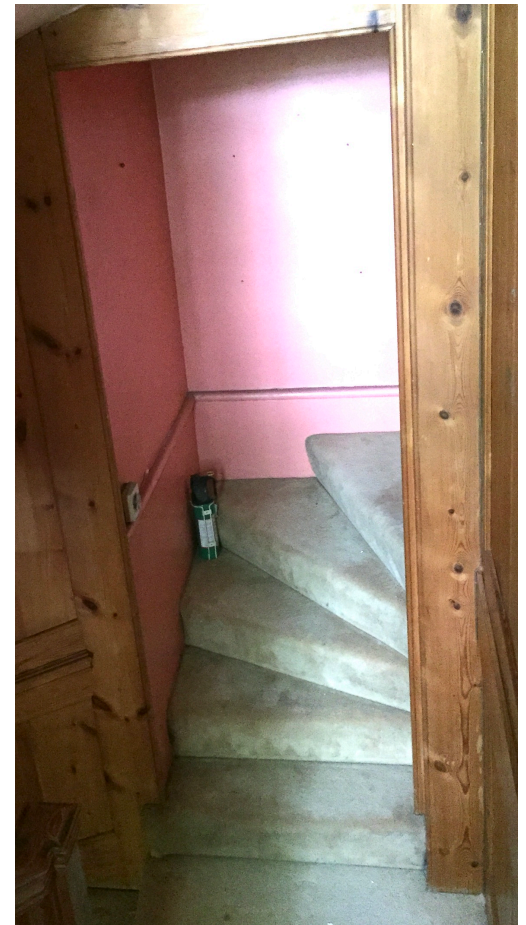
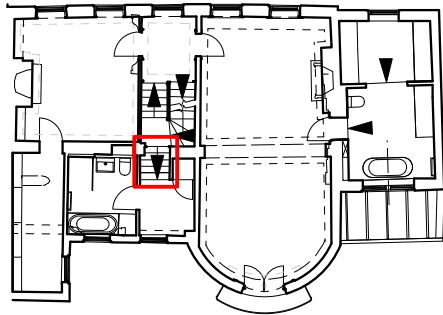
MORETON HOUSE N6

FIRST FLOOR
FAMILY BATHROOM D207

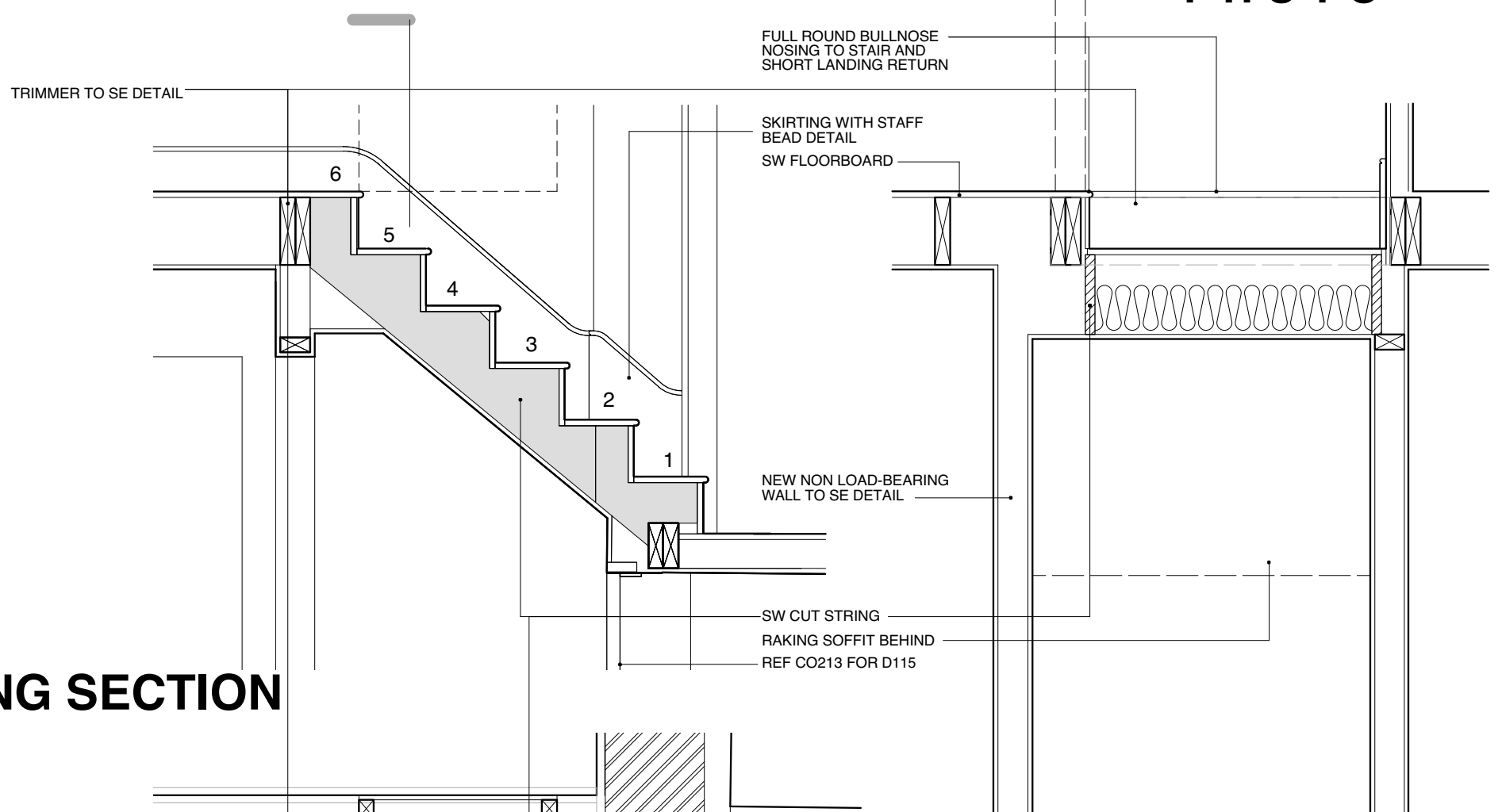
MRT/CO/224

1:20 @ A4

DO NOT SCALE FROM THIS DRAWING
REFER ALL DISCREPANCIES TO ARCHITECT



PHOTO



LONG SECTION

CROSS SECTION

PLAN
1:20

Lisa Shell
architects

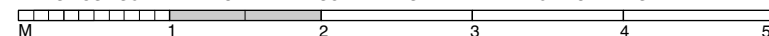
EG2 Norway Wharf, 24 Hertford Road, N1 5QT
T. 020 7275 7773 E. mail@lisashellarchitects.co.uk
www.lisashellarchitects.co.uk
Director: Lisa Shell RIBA Registered in England No. 5000138
Registered office: Ross House, Stow-on-the-Wold, Glos. GL54 1AF

REVISIONS/ ISSUE

02/10/2017
ISSUE TO SE
FOR COMMENT

04/10/2017 A
ISSUE TO PLANNING
FOR APPROVAL

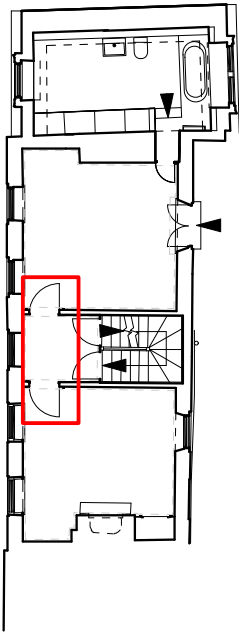
PLEASE USE SCALE BAR TO TAKE MEASUREMENTS WHEN READING FROM PDFS



MORETON HOUSE N6

FIRST FLOOR
REPLACEMENT SHORT RISE STAIR
MRT/CO/225/A

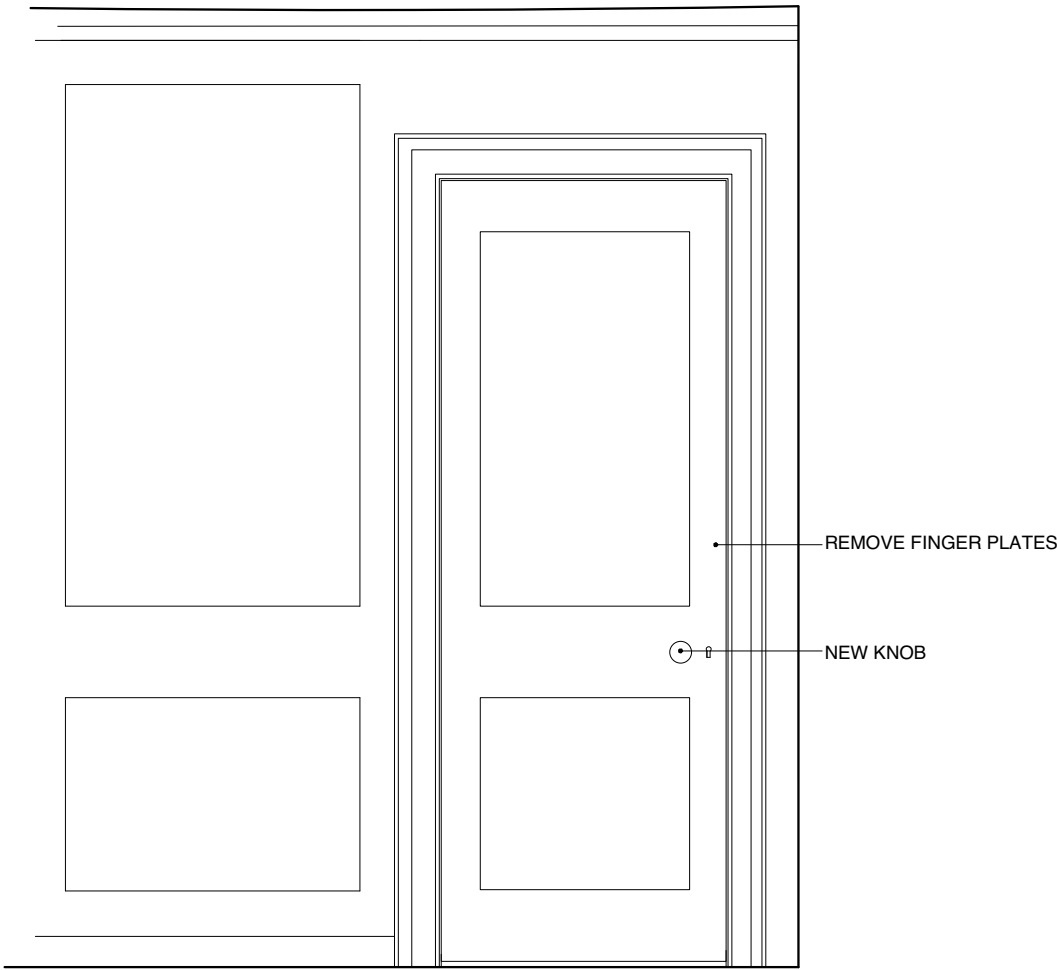
1:20 @ A3 DO NOT SCALE FROM THIS DRAWING
REFER ALL DISCREPANCIES TO ARCHITECT



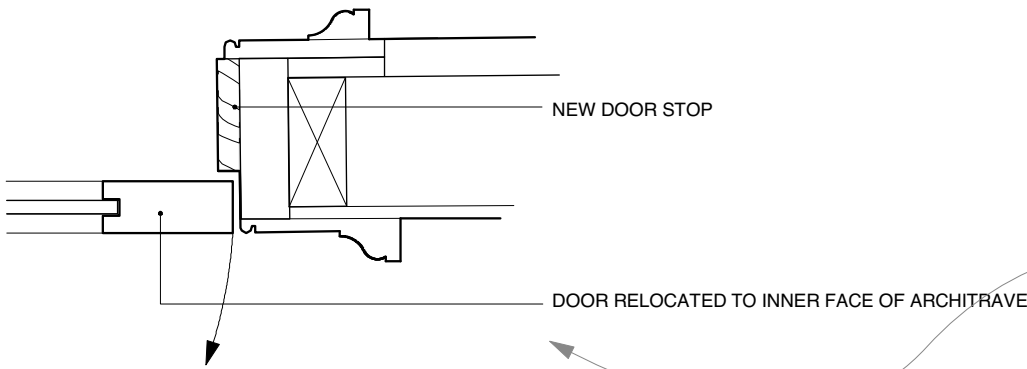
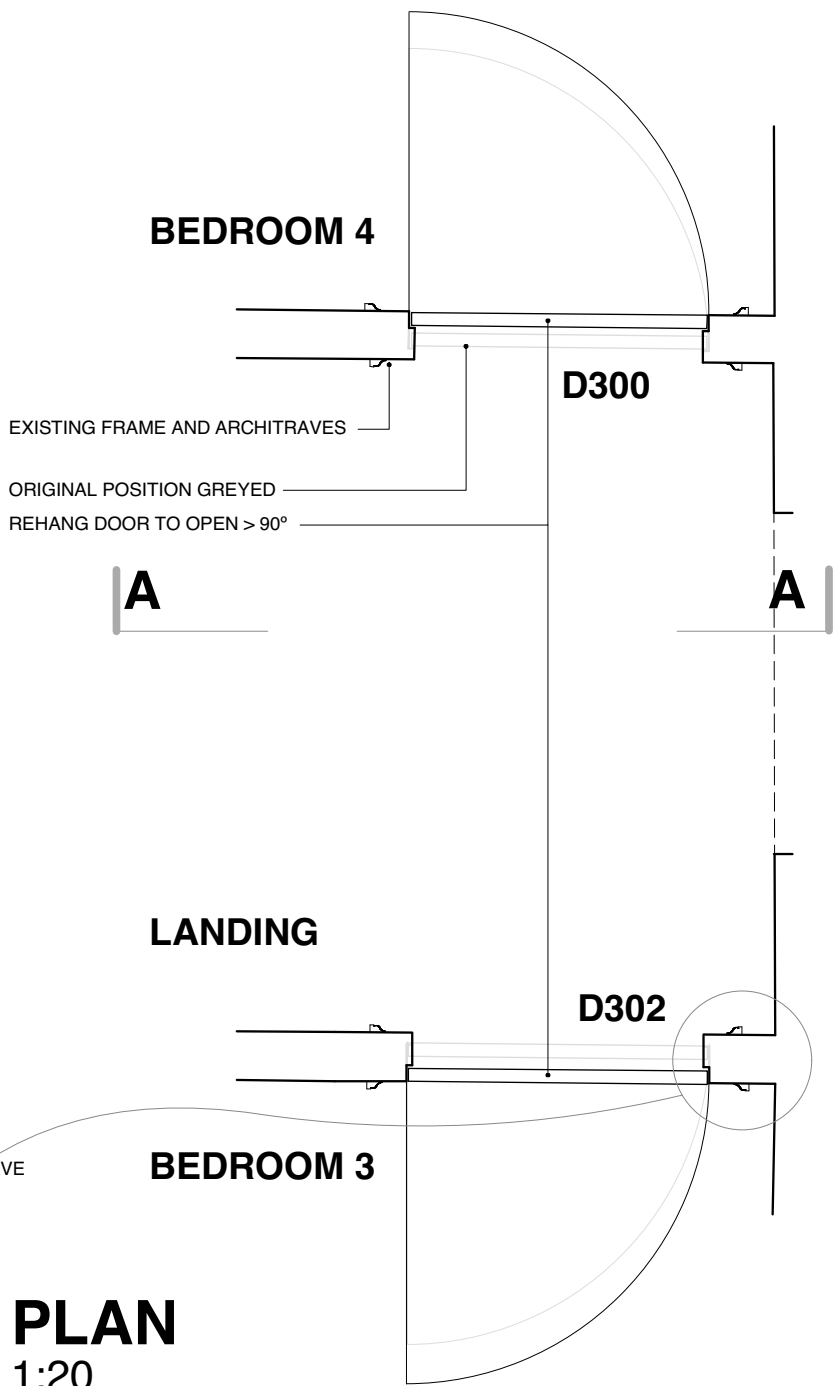
EXISTING DOOR D302 REHUNG TO OPEN WIDER THAN 90°



EXISTING DOOR D300 REHUNG TO OPEN WIDER THAN 90°



ELEVATION AA
1:20



DETAIL PLAN 1:5

PLAN
1:20

Lisa Shell
architects

EG2 Norway Wharf, 24 Hertford Road, N1 5QT
T. 020 7275 7773 E. mail@lisashellarchitects.co.uk

www.lisashellarchitects.co.uk

Director: Lisa Shell RIBA Registered in England No. 5000138
Registered office: Ross House, Stow-on-the-Wold, Glos. GL54 1AF

REVISIONS/ ISSUE

04/10/2017
ISSUE TO PLANNING
FOR APPROVAL

MORETON HOUSE N6

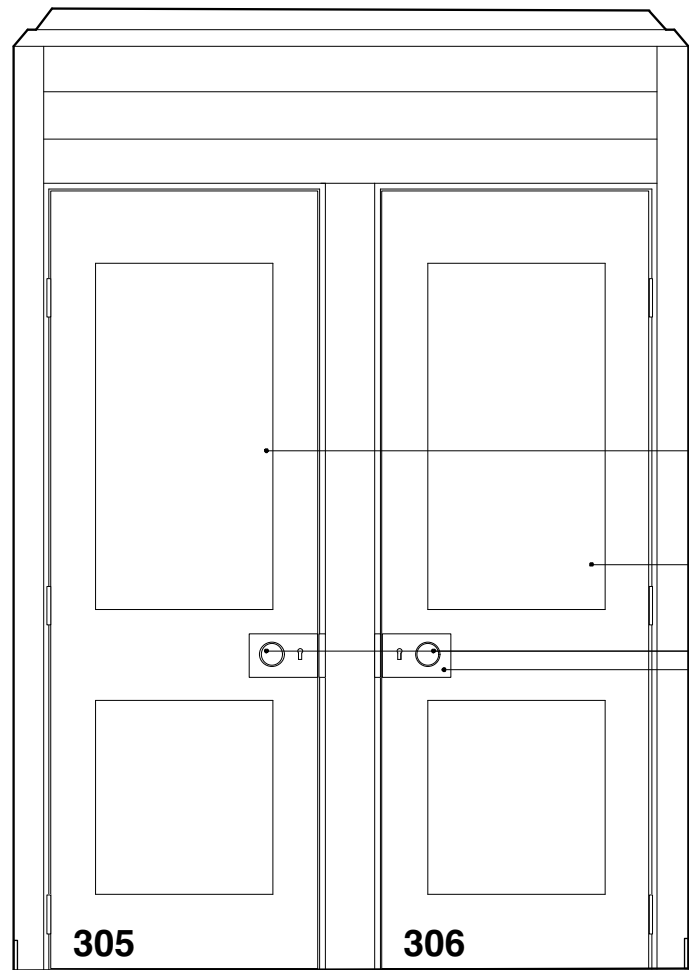
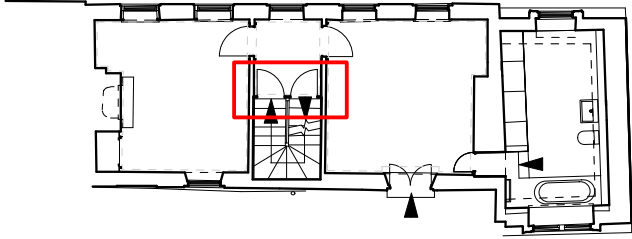
SECOND FLOOR

BEDROOMS 3 & 4 D300 & 302

MRT/CO /231

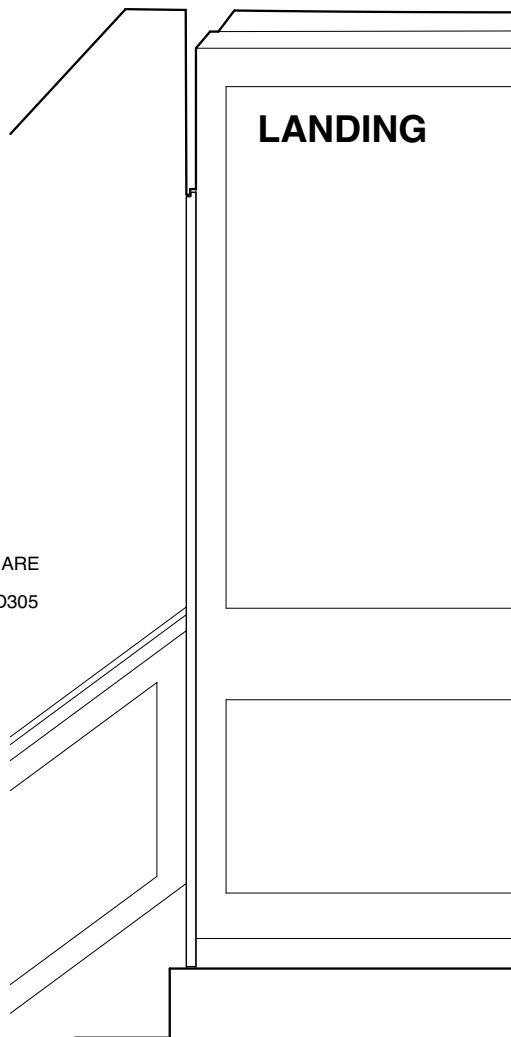
1:20/1:5 @ A3

DO NOT SCALE FROM THIS DRAWING
REFER ALL DISCREPANCIES TO ARCHITECT



ELEVATION BB
1:20

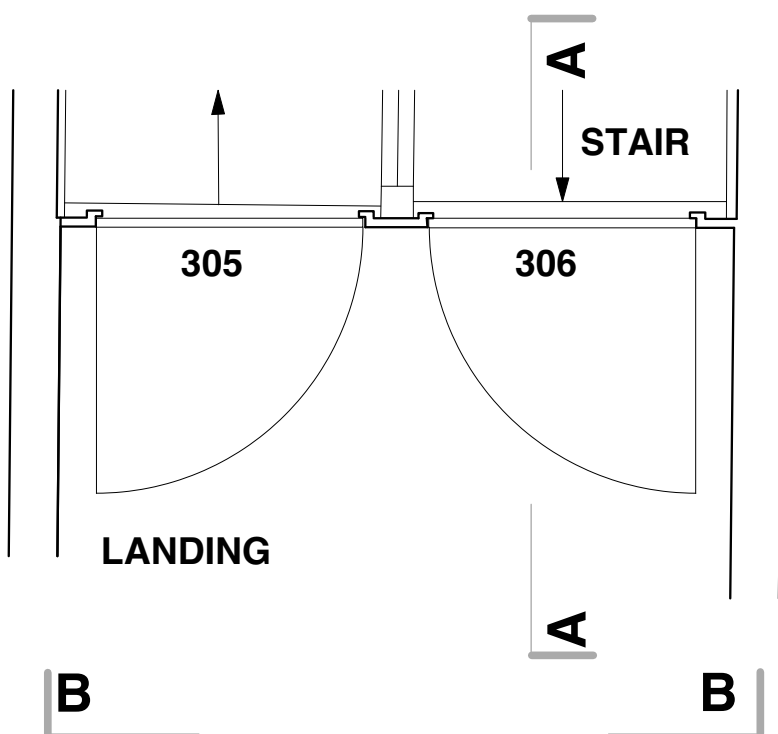
EXISTING DOOR
NEW TIMBER SQUARE
EDGED PANELLED
DOOR TO MATCH D305
NEW KNOBS
NEW RIMLOCK TO
MATCH EXISTING



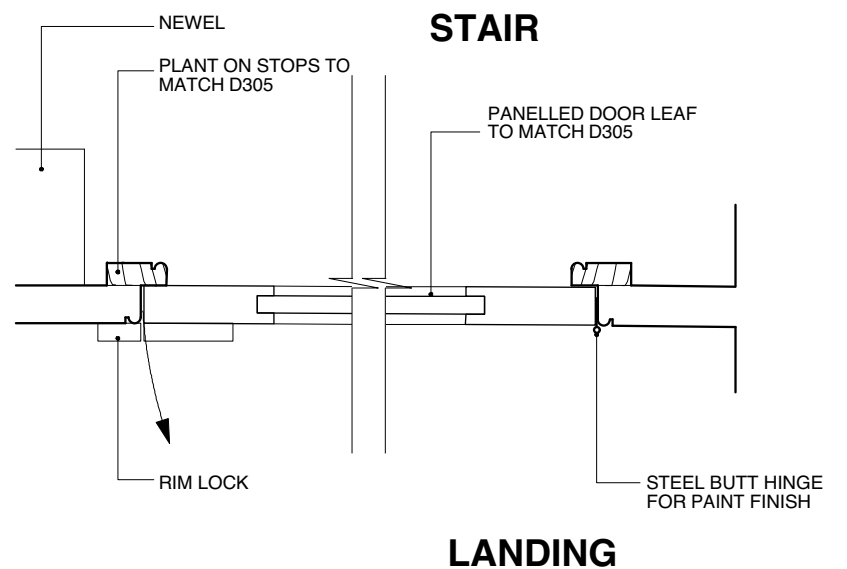
SECTION AA
1:20



EXISTING DOOR D305



PLAN
1:20



DETAIL PLAN 1:5

Lisa Shell
architects

EG2 Norway Wharf, 24 Hertford Road, N1 5QT
T. 020 7275 7773 E. mail@lisashellarchitects.co.uk

www.lisashellarchitects.co.uk

Director: Lisa Shell RIBA Registered in England No. 5000138
Registered office: Rose House, Stow-on-the-Wold, Glos. GL54 1AF

REVISIONS/ ISSUE

04/10/2017
ISSUE TO PLANNING
FOR APPROVAL

MORETON HOUSE N6

SECOND FLOOR
LANDING DOOR D306

MRT/CO/232

1:20/1:5 @ A3

DO NOT SCALE FROM THIS DRAWING
REFER ALL DISCREPANCIES TO ARCHITECT