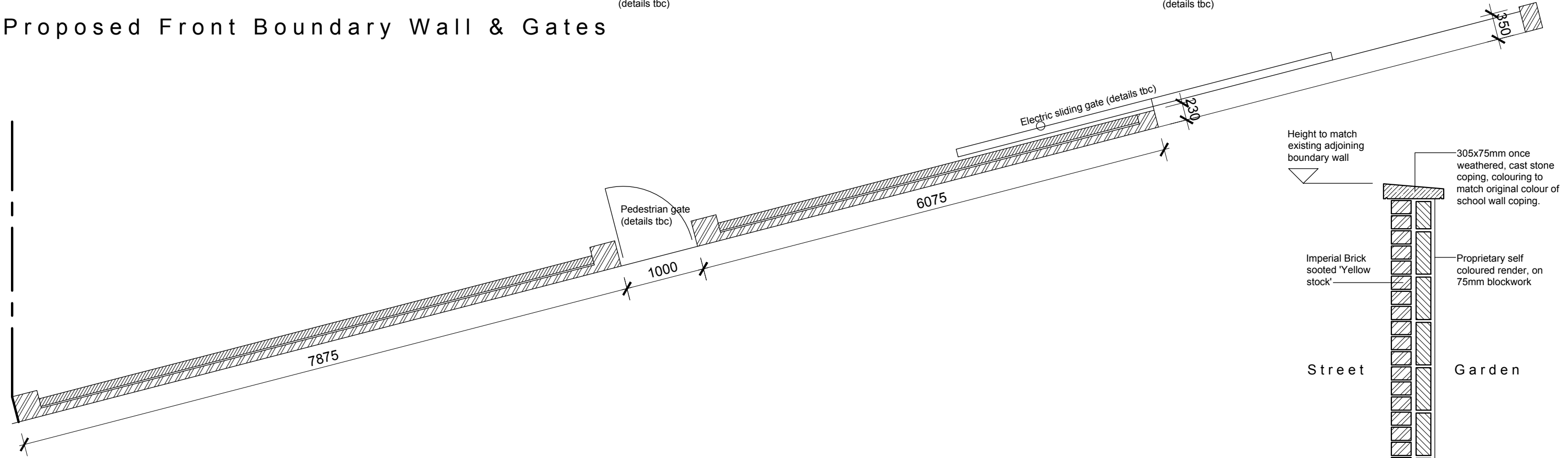
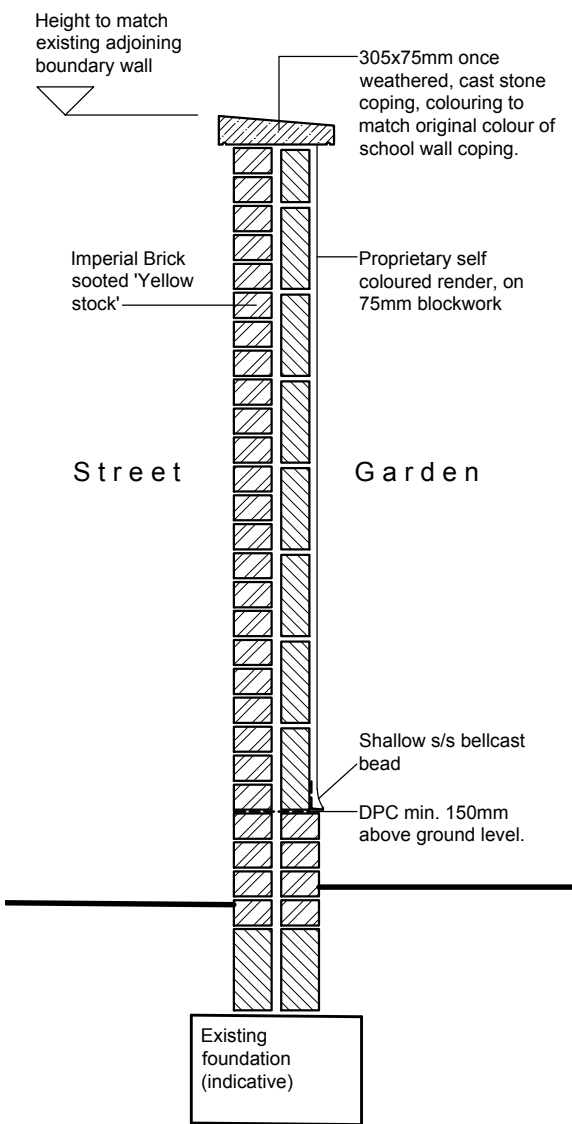


Proposed Front Boundary Wall & Gates



- New Front Boundary Wall:**
- 2.05m high (level with adjoining wall) 230mm wide Garden wall, with piers, facing brick externally & rendered blockwork externally. Comprising:
 - Imperial Bricks 'sooted' 'Yellow Stock' hand-made imperial size bricks, laid Flemish bond. Mortar & pointing, as main house.
 - 25mm min. clear cavity.
 - 75mm Medium dense, low shrinkage, concrete blocks, eg. Plasmor Stranlite, finished with a proprietary smooth self-coloured render e.g. Weber weber.pral-M. Stainless steel ties 450 vertically, 900 horizontally.
 - DPC, as main house, 150mm above ground
 - Below DPC both sides 'Yellow stock' brickwork, in 1 in 3 cement:sand mortar.
 - Capping: 305x75mm once weathered, cast stone coping, colouring to match original colour of school wall coping.
 - Existing foundation



8 Nutley Terrace, London. NW3 5SY
Proposed Alterations and Extensions

Proposed Front Boundary Wall
drg. 07.16.70.A Scale: 1:20 & 50

