



REV	DATE	DESCRIPTION	DES	REV	DATE	DESCRIPTION	DES
P1	30/06/17	EXIST FOR DRAWING	MSL				
P2	03/10/17	EXIST FOR DRAWING AMENDMENTS	MSL				

AMENDMENTS:  
- window types on corner piece changed  
- opening outside deck access entrance increased  
- canopy added over community cafe  
- canopy above ground floor duplex entrances moved below brick  
- grey metal panel added behind balustrade on first floor corner balcony

NOTES

Allies and Morrison  
85 Southwark Street  
London SE1 0HX  
telephone 020 7921 0100  
facsimile 020 7921 0101  
email info@alliesandmorrison.com  
A&M JOB NO: 1095

CAMDEN GOODS YARD  
BLOCK D  
NORTH ELEVATION  
1095\_04\_07\_200  
SCALE 1:100 @A0





AMENDMENTS:

- window types changed to juliet
- slot window on left hand side separated from balcony window type
- canopy added over community cafe and glazing increased
- pergola extent reduced
- grey metal panel added behind balustrade on first floor corner balcony
- ground floor openings changed

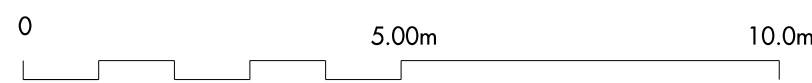


CAMDEN GOODS YARD  
BLOCK D  
EAST ELEVATION  
1095\_04\_07\_201  
SCALE 1:100 @A0



[illegible]

AMENDMENTS:  
- eastern part of building - parapet height reduced and 1m recessed balustrade added  
- retail structure - parapet reduced by 200mm

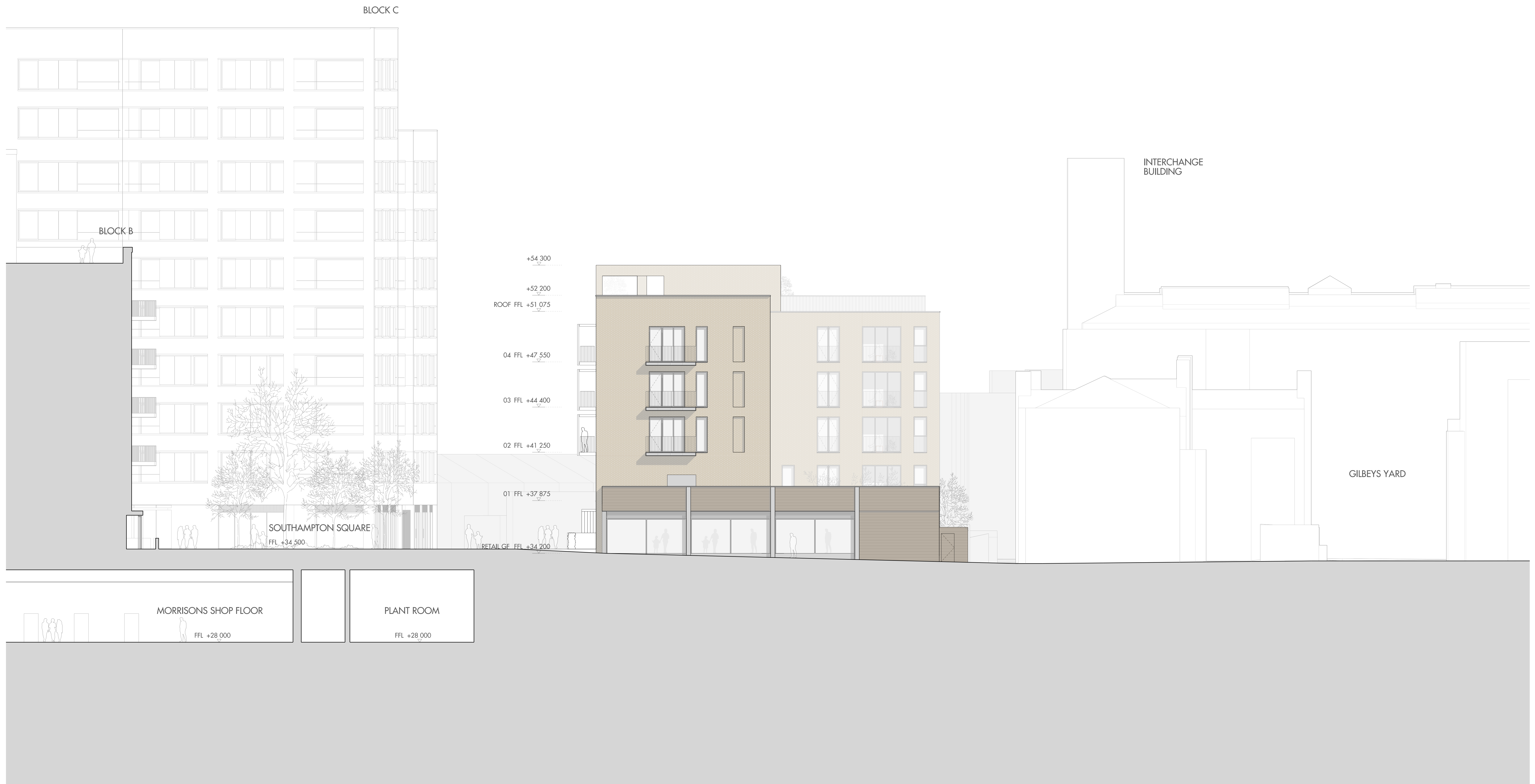
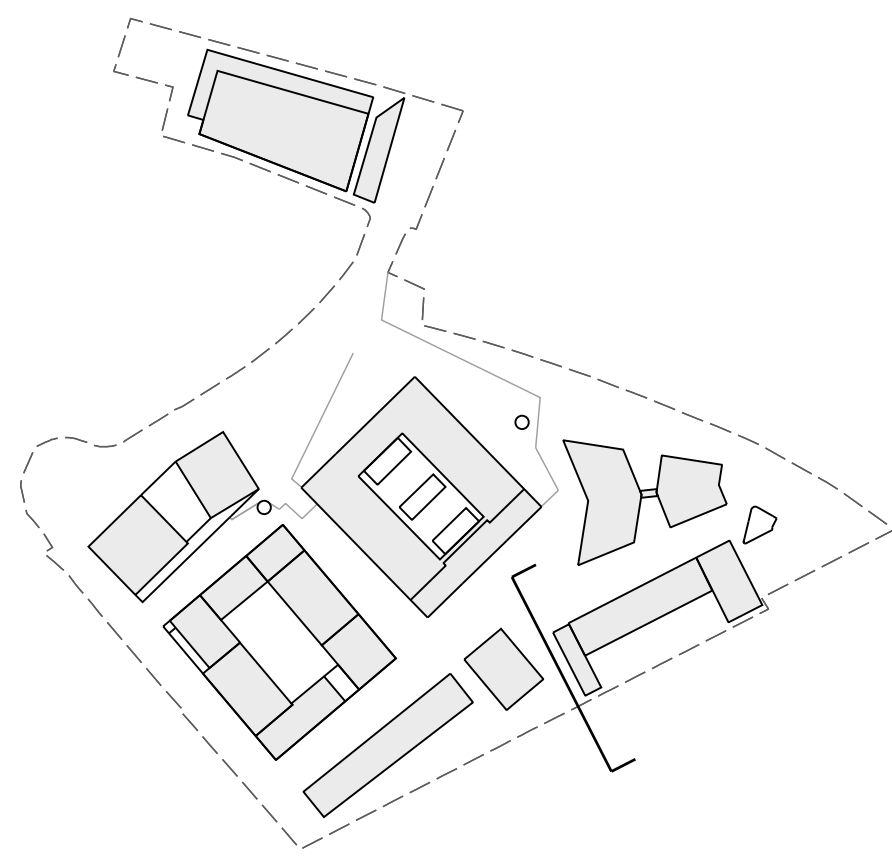


## NOTES

Allies and Morrison  
85 Southwark Street  
London SE1 0HX  
telephone 020 7921 0100  
facsimile 020 7921 0101  
email [info@alliesandmorrison.com](mailto:info@alliesandmorrison.com)  
A&M JOB NO. 1005

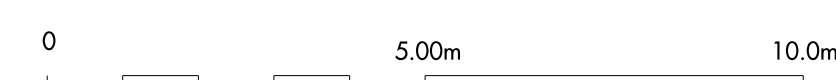
CAMDEN GOODS YARD  
BLOCK D  
SOUTH ELEVATION  
1095\_04\_07\_202  
SCALE 1:100 @A0



[illegible]

AMENDMENTS:

- brick parapet replaced with balustrade
- retail structure - frame made full height
- retail structure - parapet reduced by 200mm



## NOTES

Allies and Morrison  
85 Southwark Street  
London SE1 0HX  
telephone 020 7921 0100  
facsimile 020 7921 0101  
email [info@alliesandmorrison.com](mailto:info@alliesandmorrison.com)  
A&M JOB NO: 1095

CAMDEN GOODS YARD  
BLOCK D  
WEST ELEVATION  
1095\_04\_07\_203  
SCALE 1:000 @A0