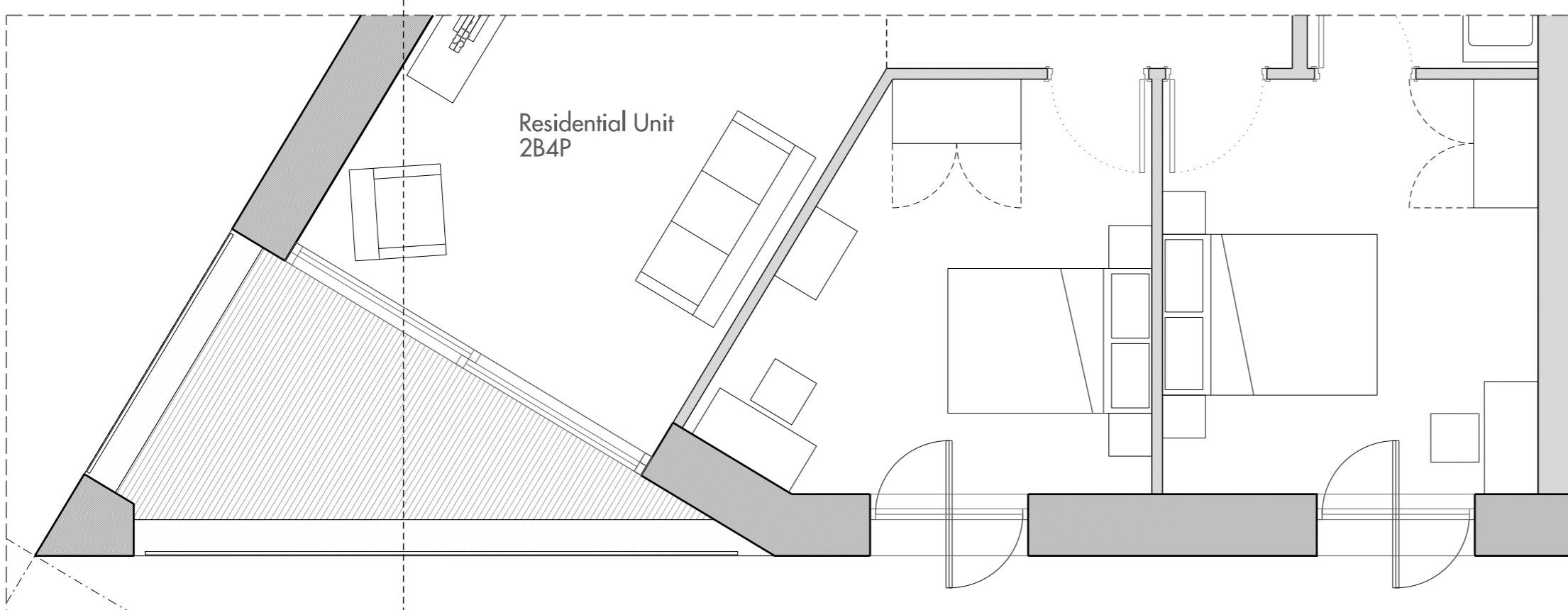
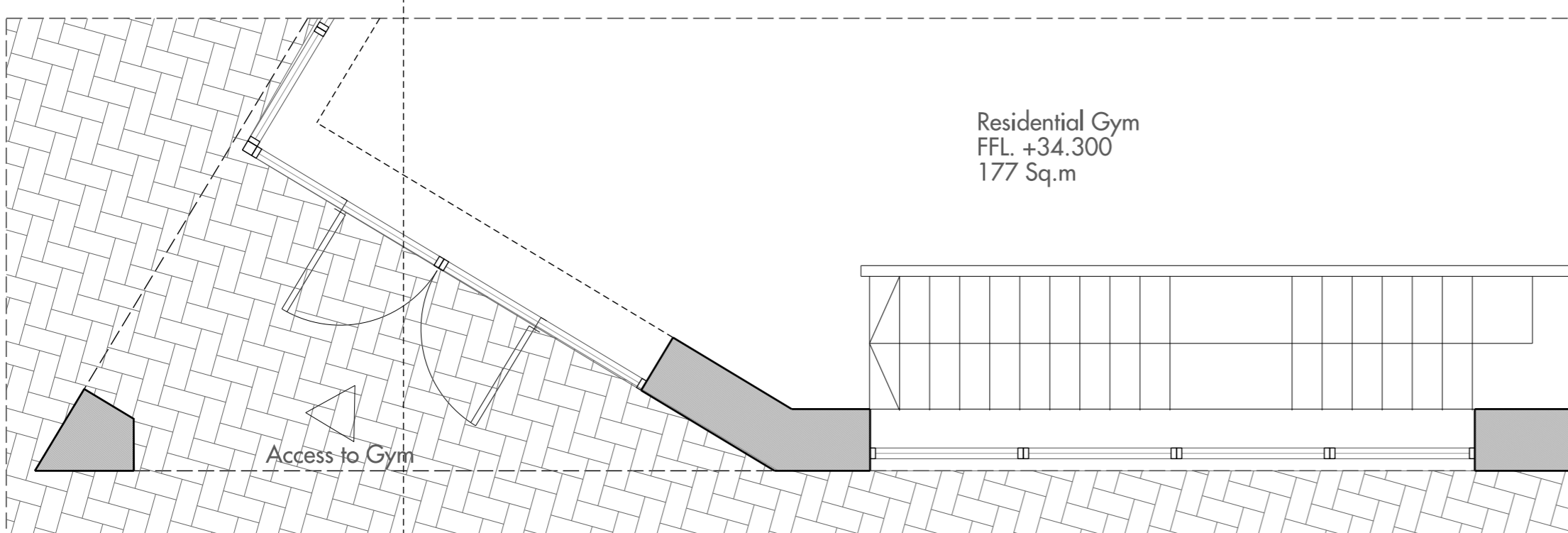


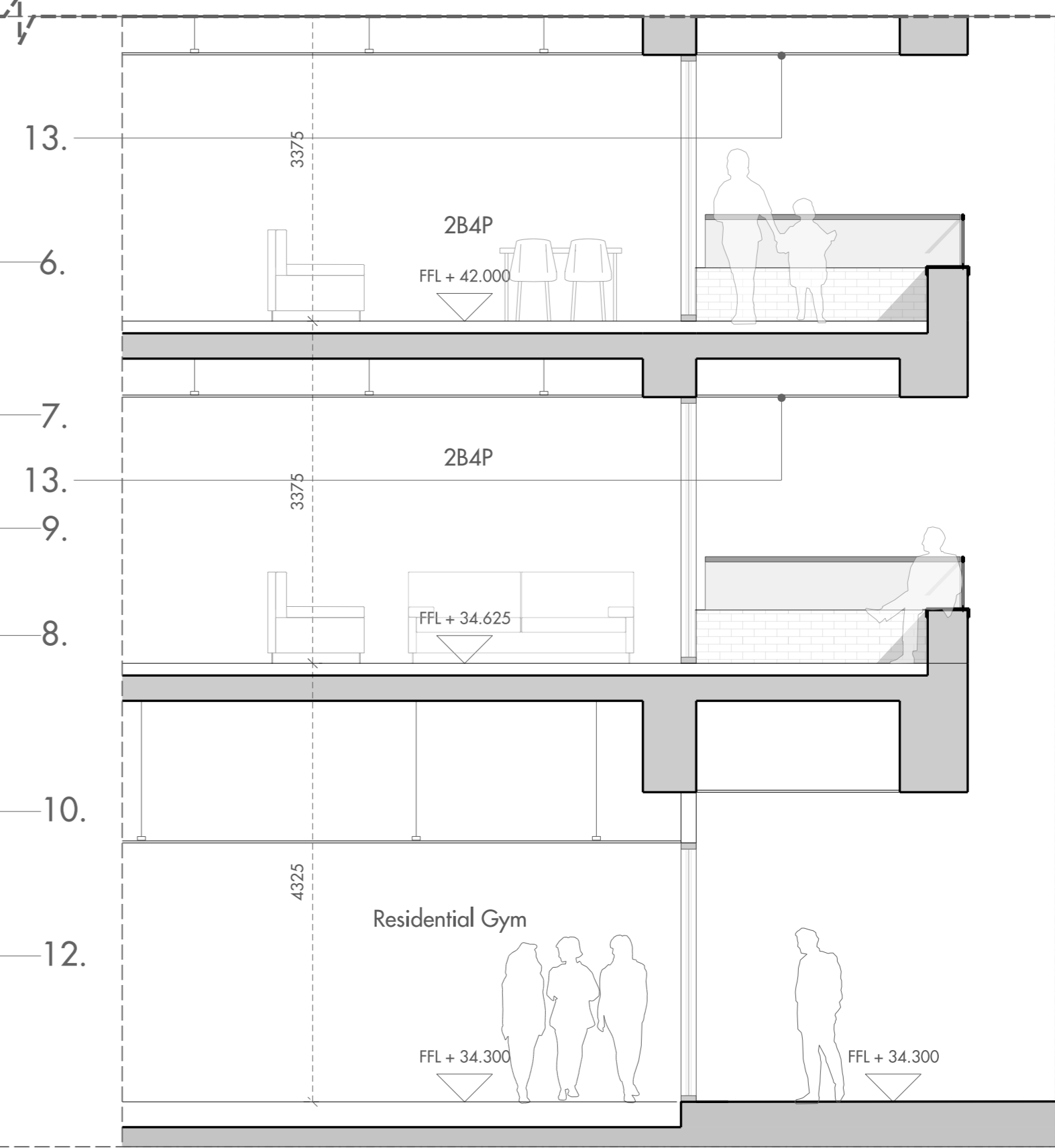
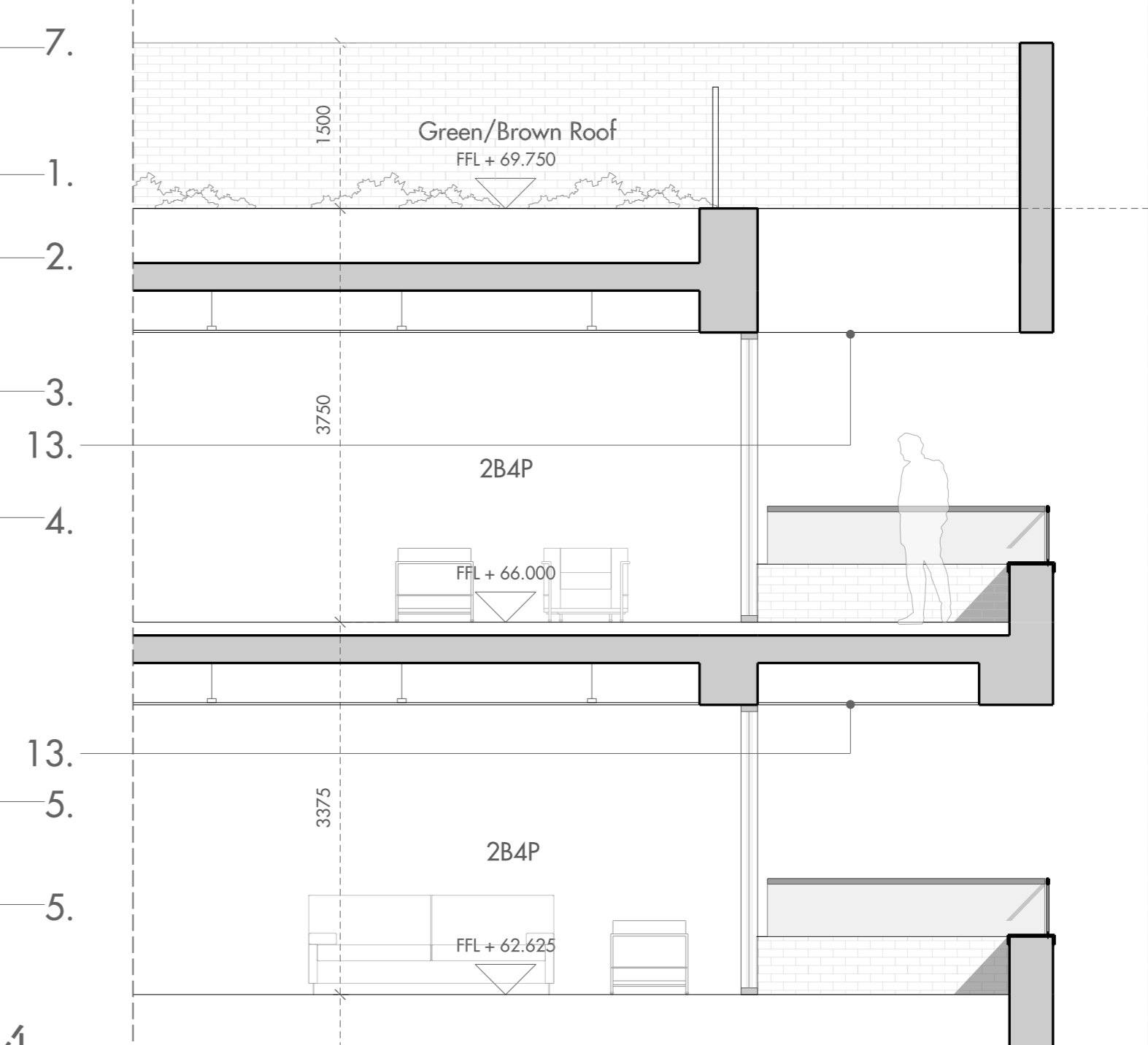
01 Block C : West Elevation  
1:50



03 Block C : Typical Floor Plan  
1:50

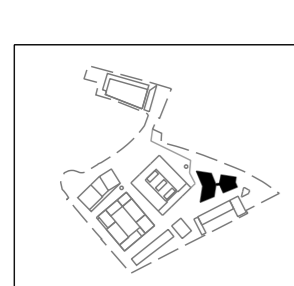


04 Block C : Ground Floor Plan  
1:50



02 Block C : Section AA  
1:50

- Bay Study Key
1. Brick Parapet
  2. Multi Grey Brickwork
  3. Metal Window Frame
  4. Metal Balustrade
  5. Glazing
  6. Glazed Balustrade
  7. Pre-Cast Concrete Coping
  8. Pre-Cast Concrete Sill
  9. Pre-Cast Concrete Panel
  10. Metal Louvres
  11. Aluminium Door
  12. Glazed Door
  13. White through coloured render soffit



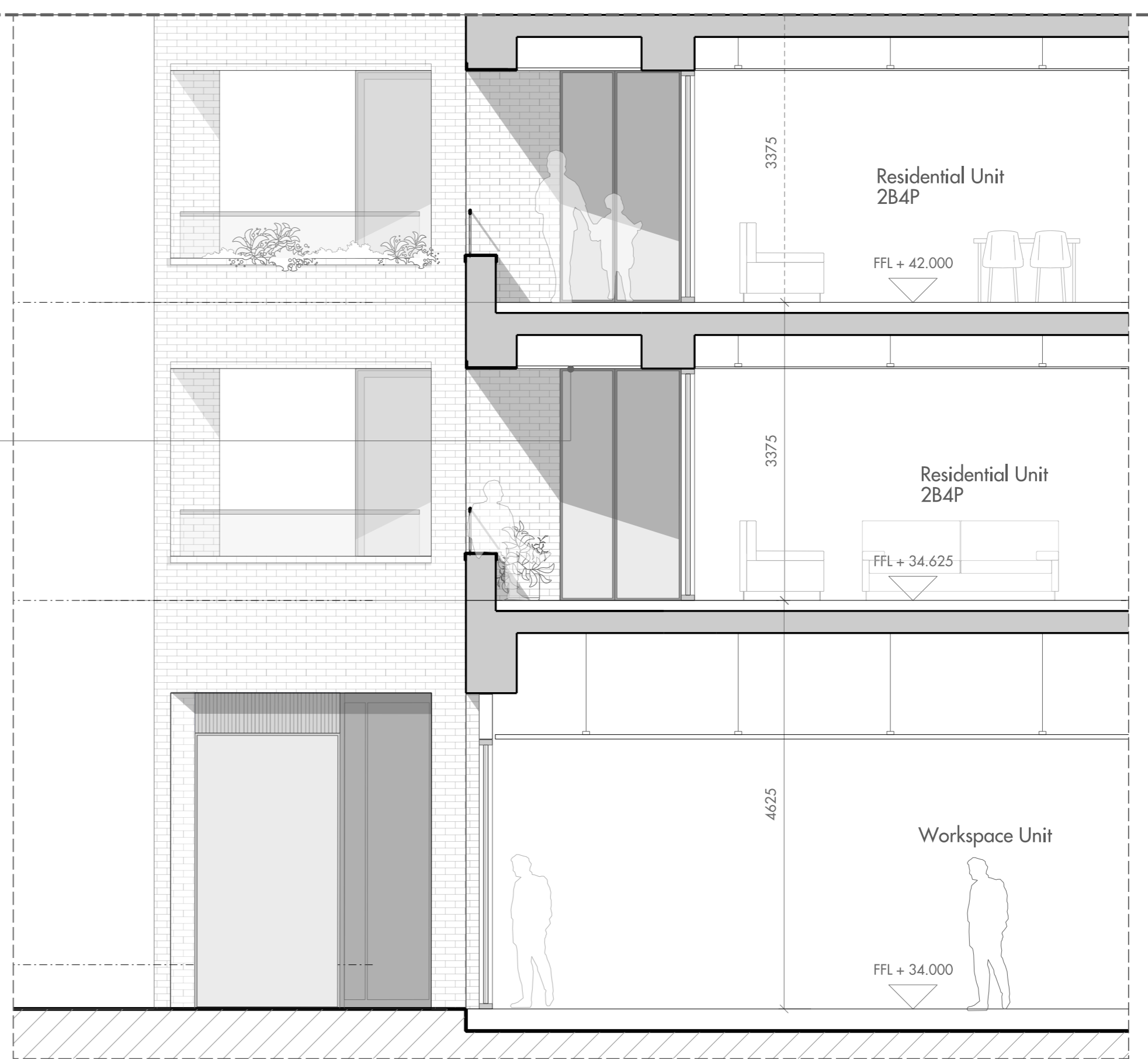
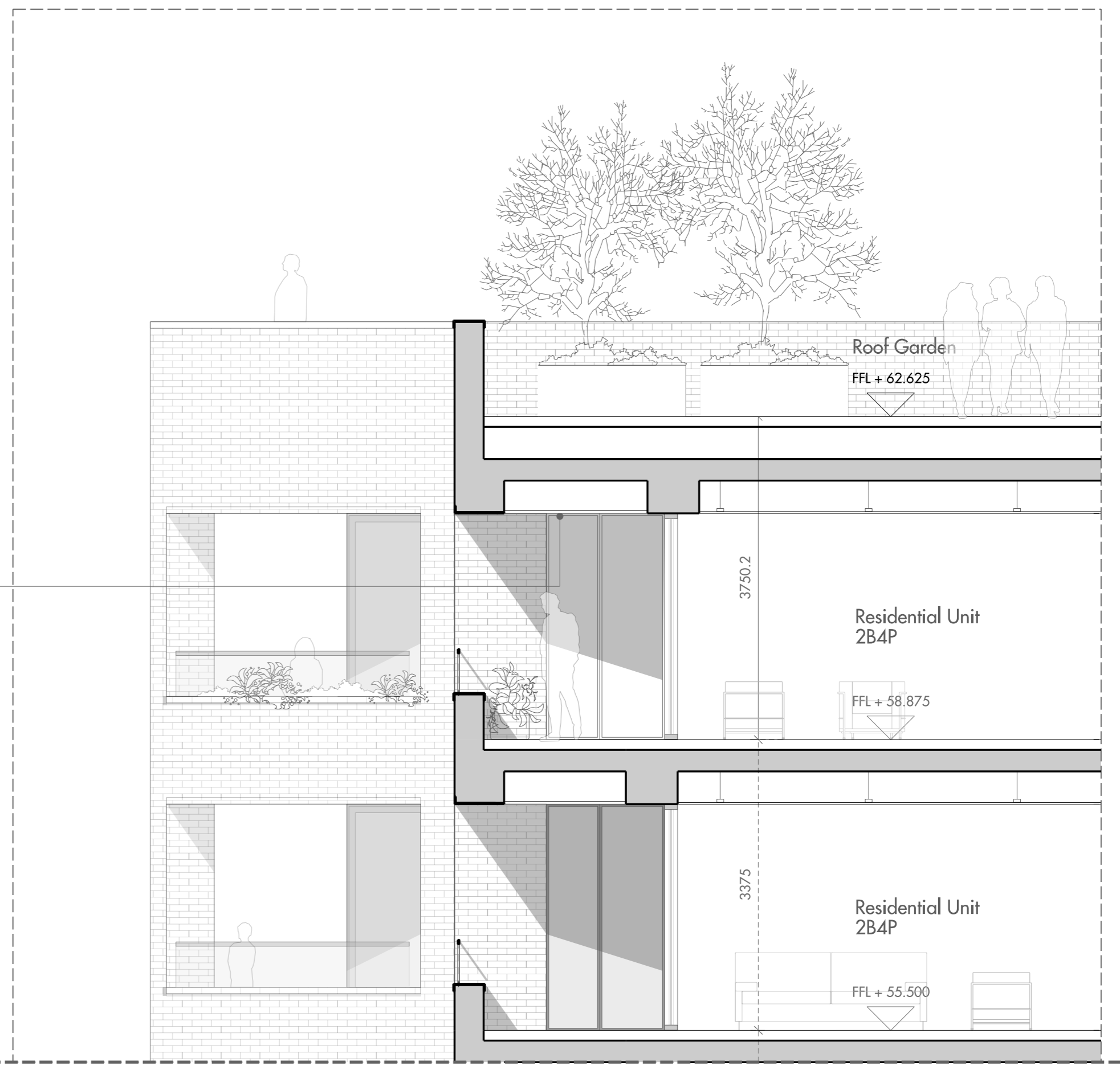
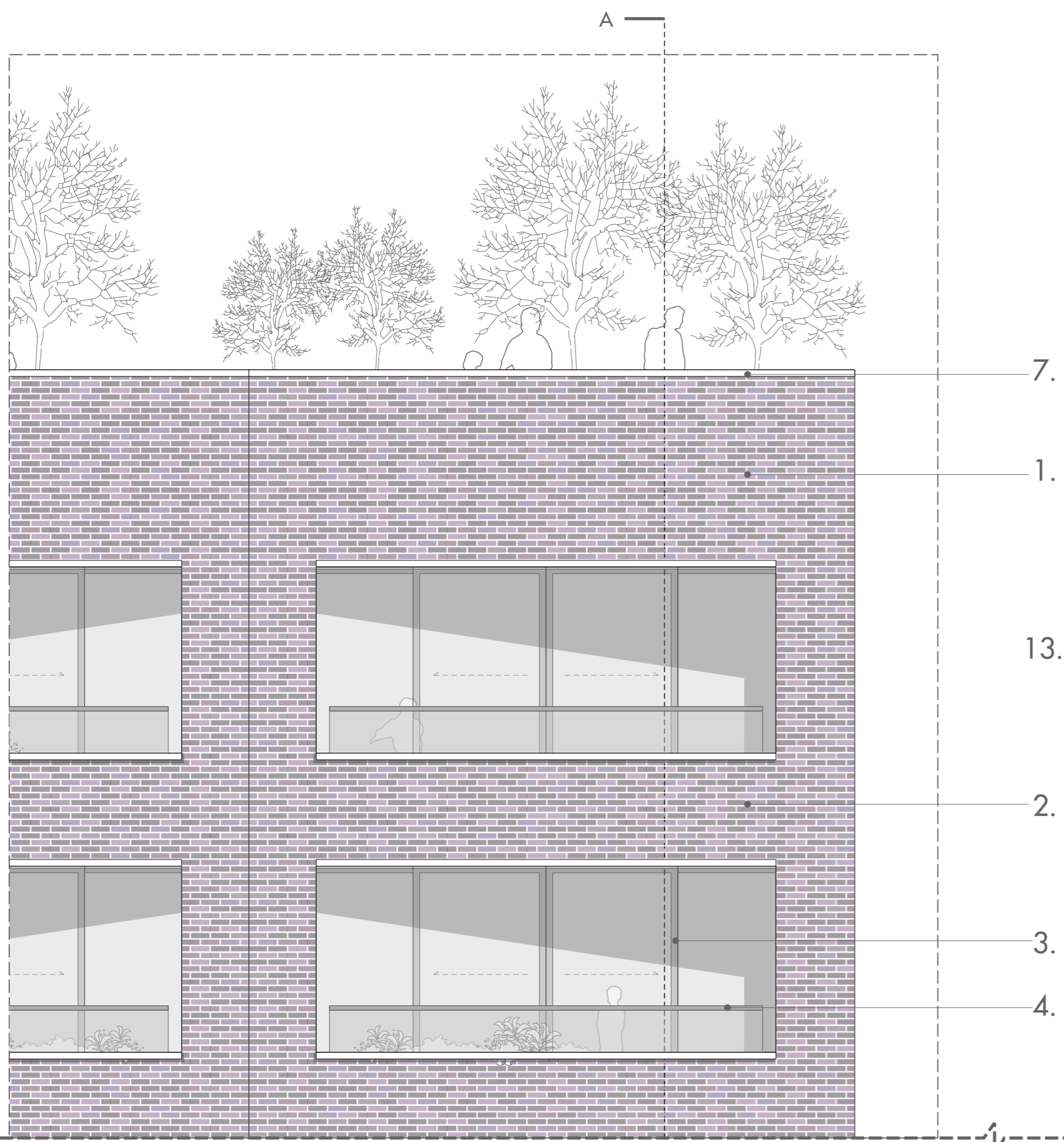
Do not scale from this drawing. Use figured dimensions only. Figured dimensions are in millimetres. All levels are in metres. All dimensions and levels shall be verified on site before proceeding with works. Detailed site survey to be carried out to verify positions and level relationships with site features and ordnance survey. The architect must be notified of any discrepancy. Where building components are described in the specification as contractor designed, "construction" information relating to those components on this drawing represents design intent only.

REV	DATE	DESCRIPTION	CHKD
F1	30/06/2017	ISSUED FOR PLANNING	MGL
F2	03/10/2017	ISSUED FOR PLANNING AMENDMENTS	MGL

AMENDMENTS:  
- changed metal balustrade profile  
- amended key

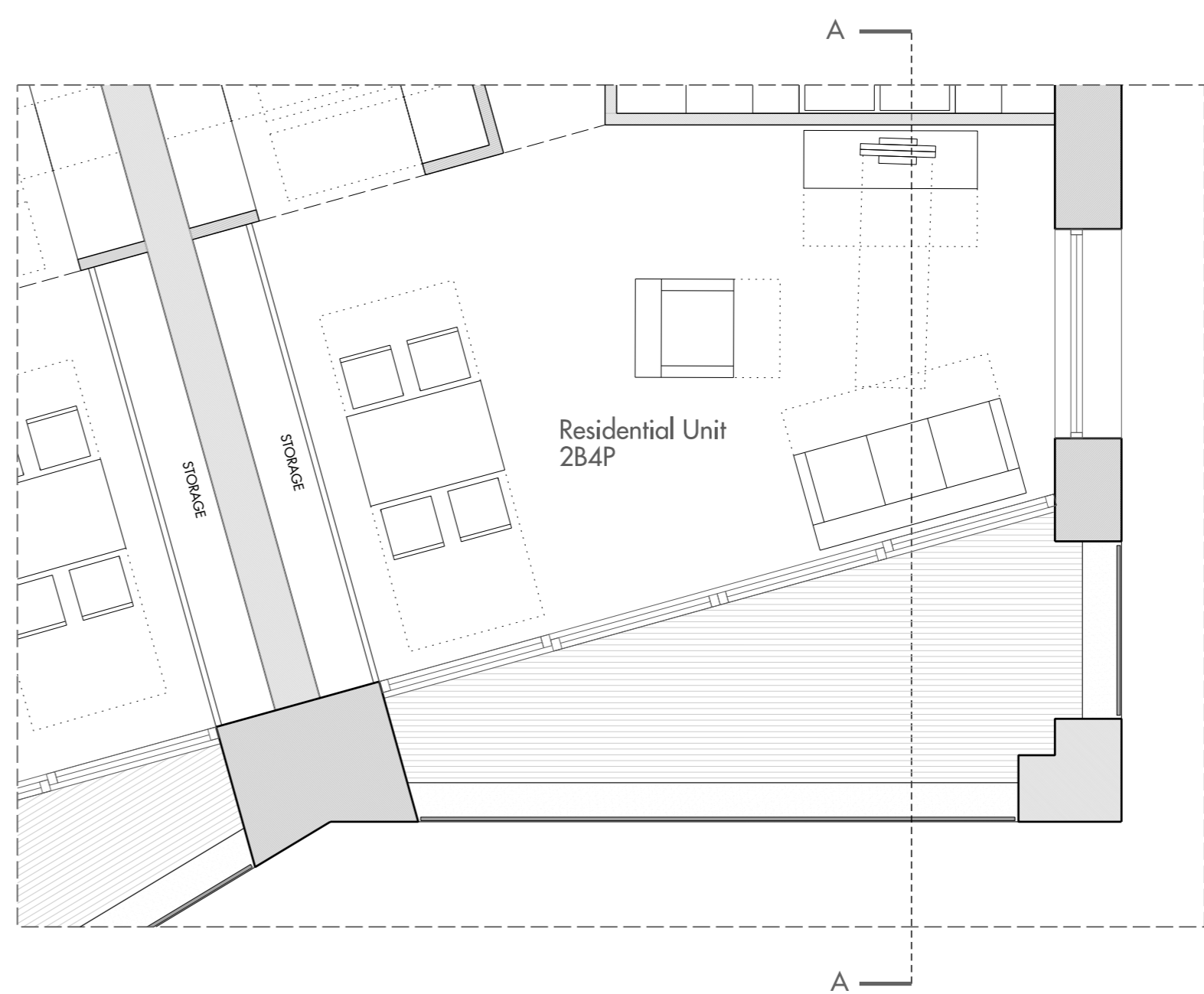
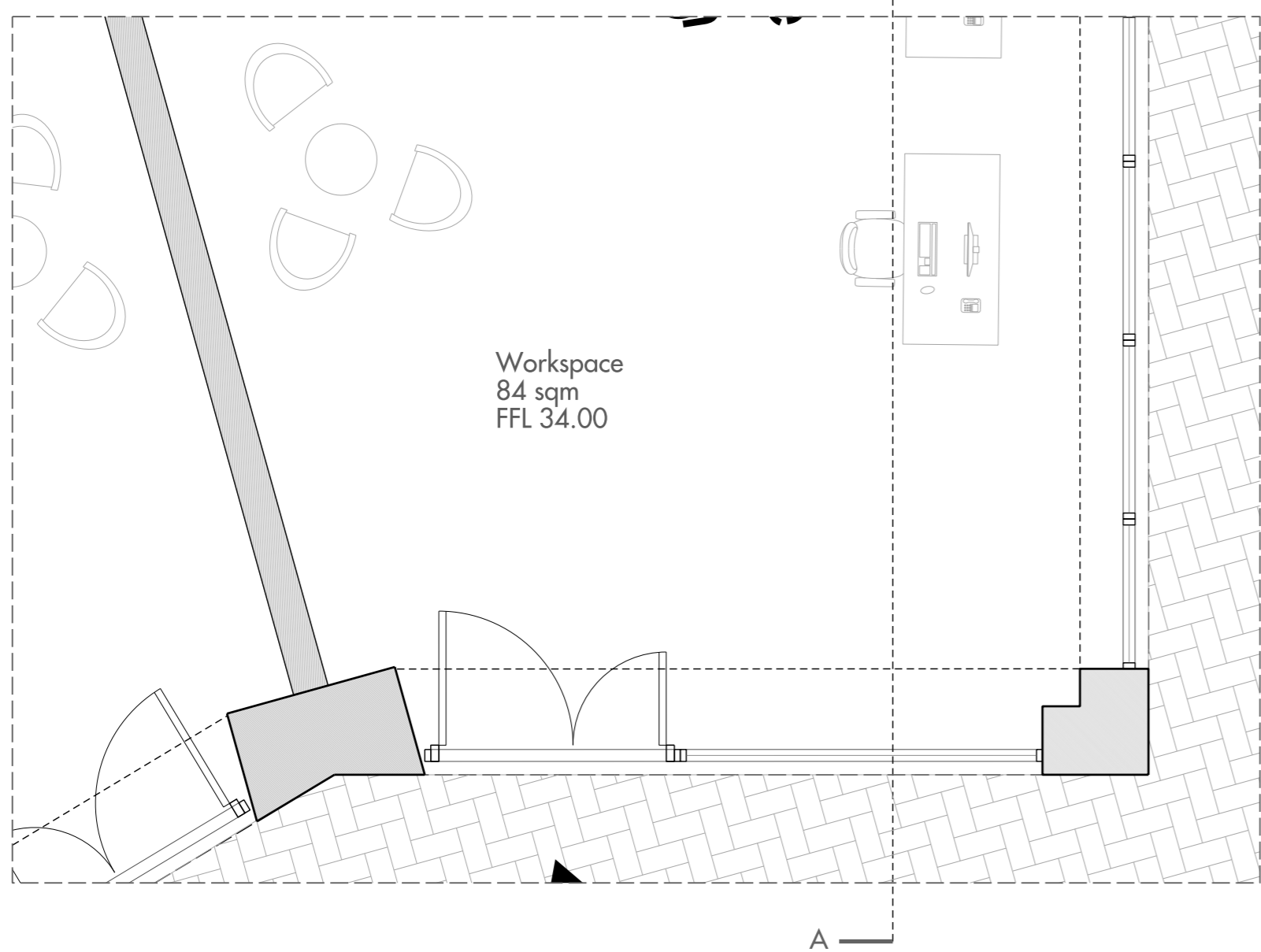
Allies and Morrison  
85 Southwark Street  
London SE1 0HX  
telephone 020 7921 0100  
facsimile 020 7921 0101  
email info@alliesandmorrison.com  
A&M JOB NO: 1095

CAMDEN GOODS YARD  
BLOCK C  
WEST ELEVATION BAY STUDY  
1095\_03\_07\_400  
SCALE 1:50 @A1 1:100@A3



01 Block C : East Elevation  
1:50

02 Block C : Section AA  
1:50



03 Block C : Ground Floor Plan  
1:50

04 Block C : Typical Floor Plan  
1:50

- Bay Study Key
1. Brick Parapet
  2. Multi Grey Brickwork
  3. Metal Window Frame
  4. Metal Balustrade
  5. Glazing
  6. Glazed Balustrade
  7. Pre-Cast Concrete Coping
  8. Pre-Cast Concrete Sill
  9. Pre-Cast Concrete Panel
  10. Metal Louvres
  11. Aluminium Door
  12. Glazed Door
  13. White through coloured render soffit

0 1m 2m

Do not scale from this drawing. Use figured dimensions only. Figured dimensions are in millimetres. All levels are in metres. All dimensions and levels shall be verified on site before proceeding with works. Detailed site survey to be carried out to verify positions and level relationships with site features and ordnance survey. The architect must be notified of any discrepancy. Where building components are described in the specification as contractor designed, "construction" information relating to those components on this drawing represents design intent only.

REV	DATE	DESCRIPTION	CHK
P1	30/04/2017	ISSUED FOR PLANNING	ANGA
P2	03/10/2017	ISSUED FOR PLANNING AMENDMENTS	ANGA

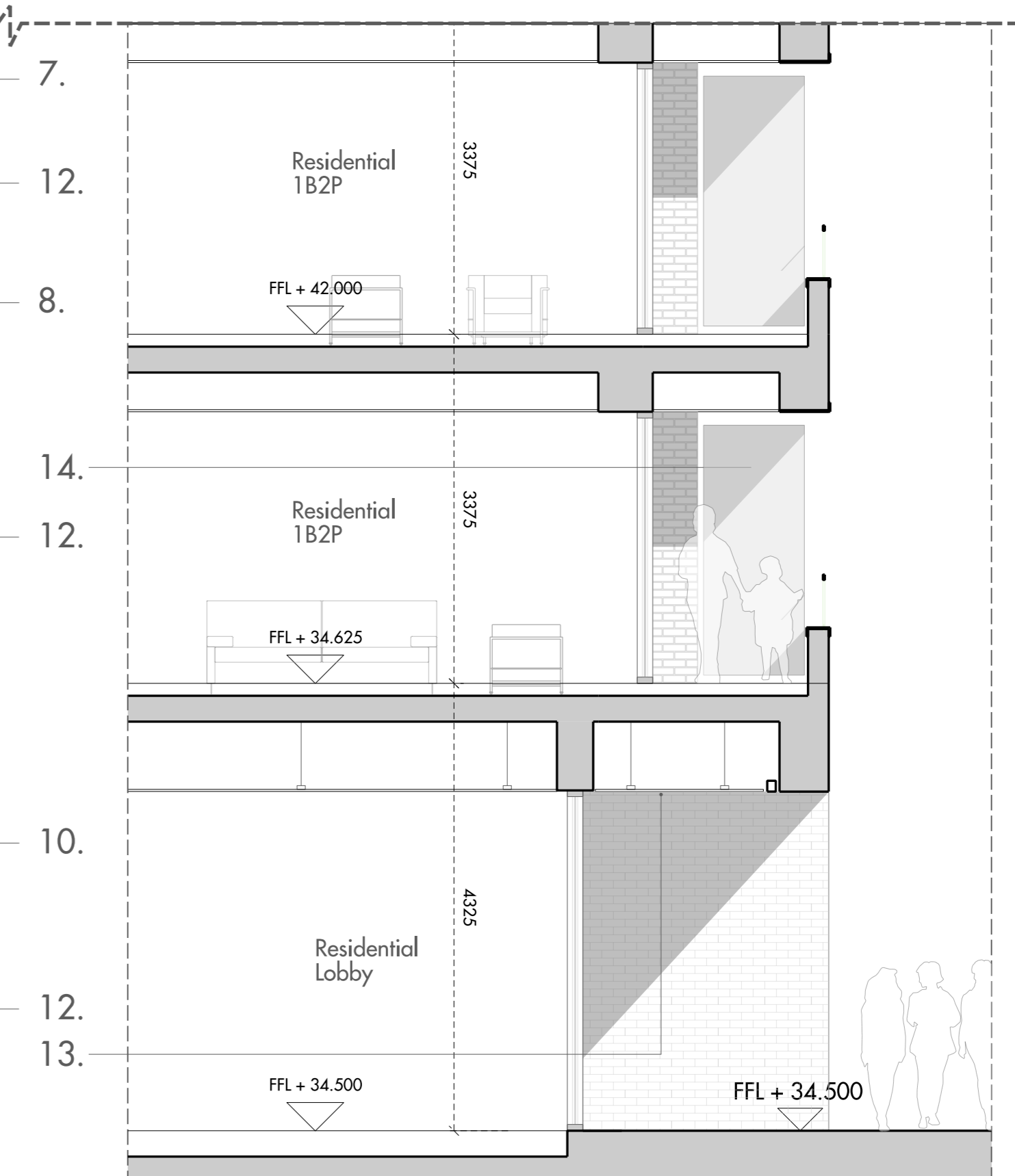
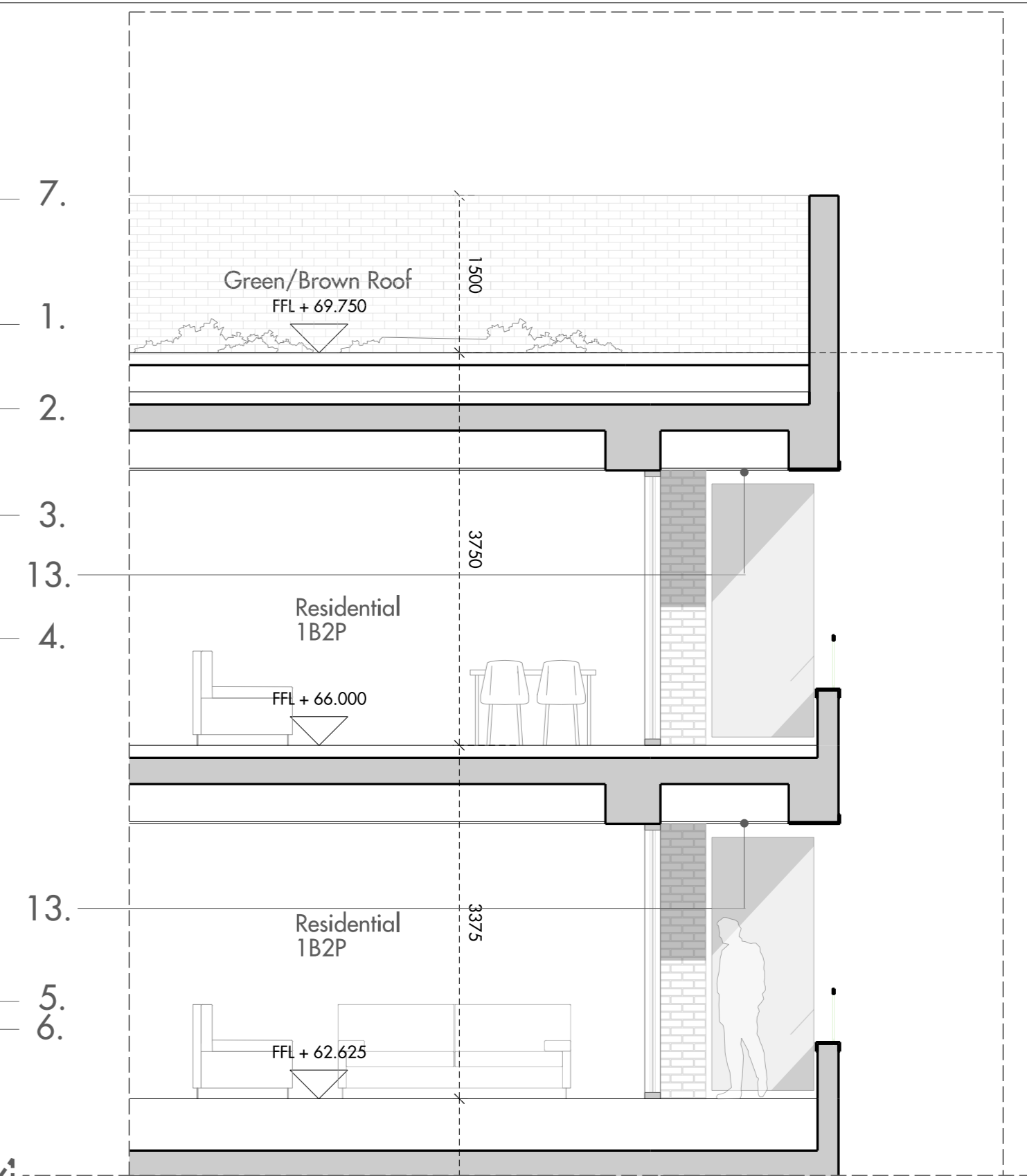
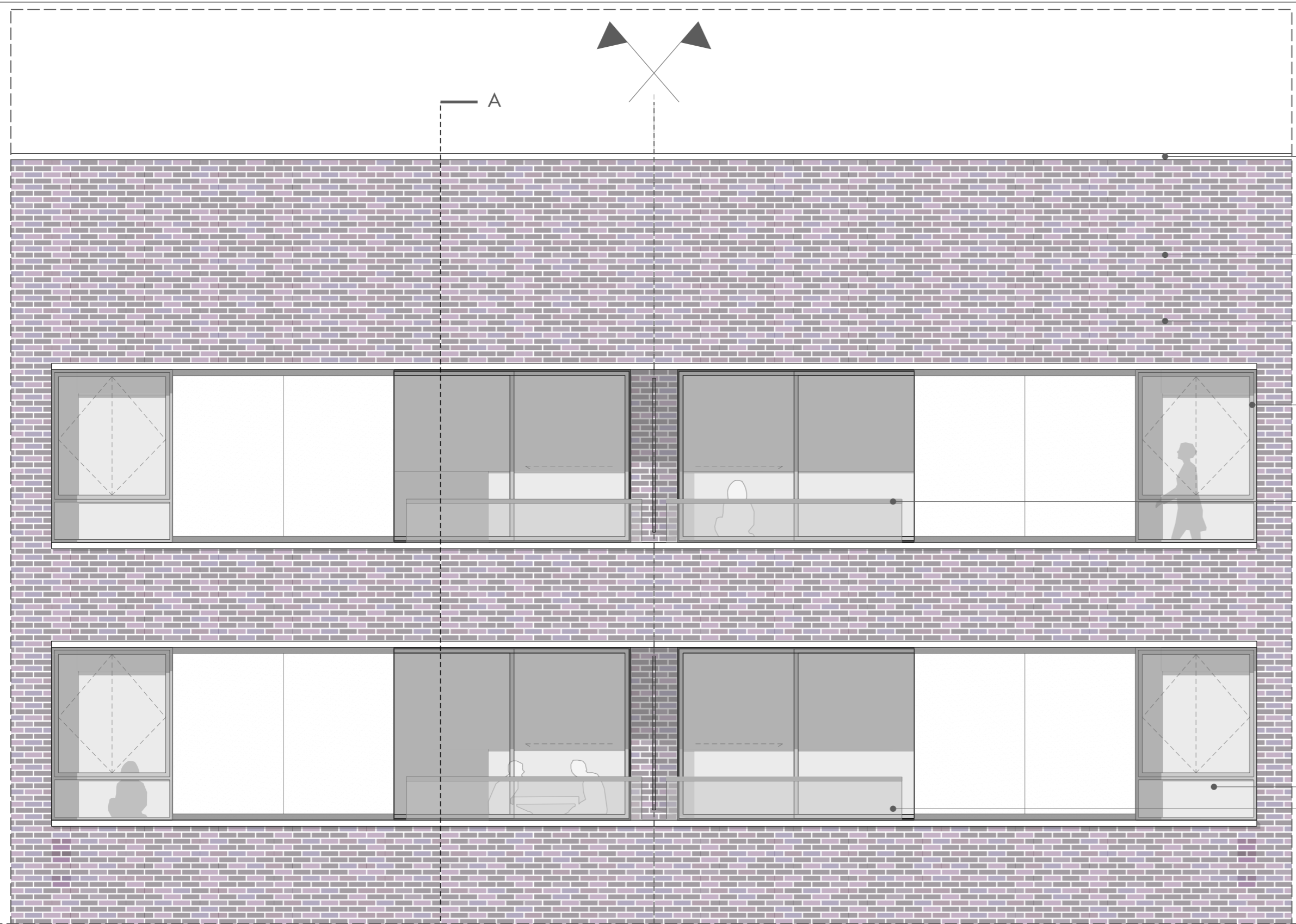
AMENDMENTS:  
- changed metal balustrade profile  
- removed workshops recessed entrance  
- amended key

telephone  
facsimile  
email

Allies and Morrison  
85 Southwark Street  
London SE1 0HX  
020 7921 0100  
020 7921 0101  
info@alliesandmorrison.com  
A&M JOB NO: 1095

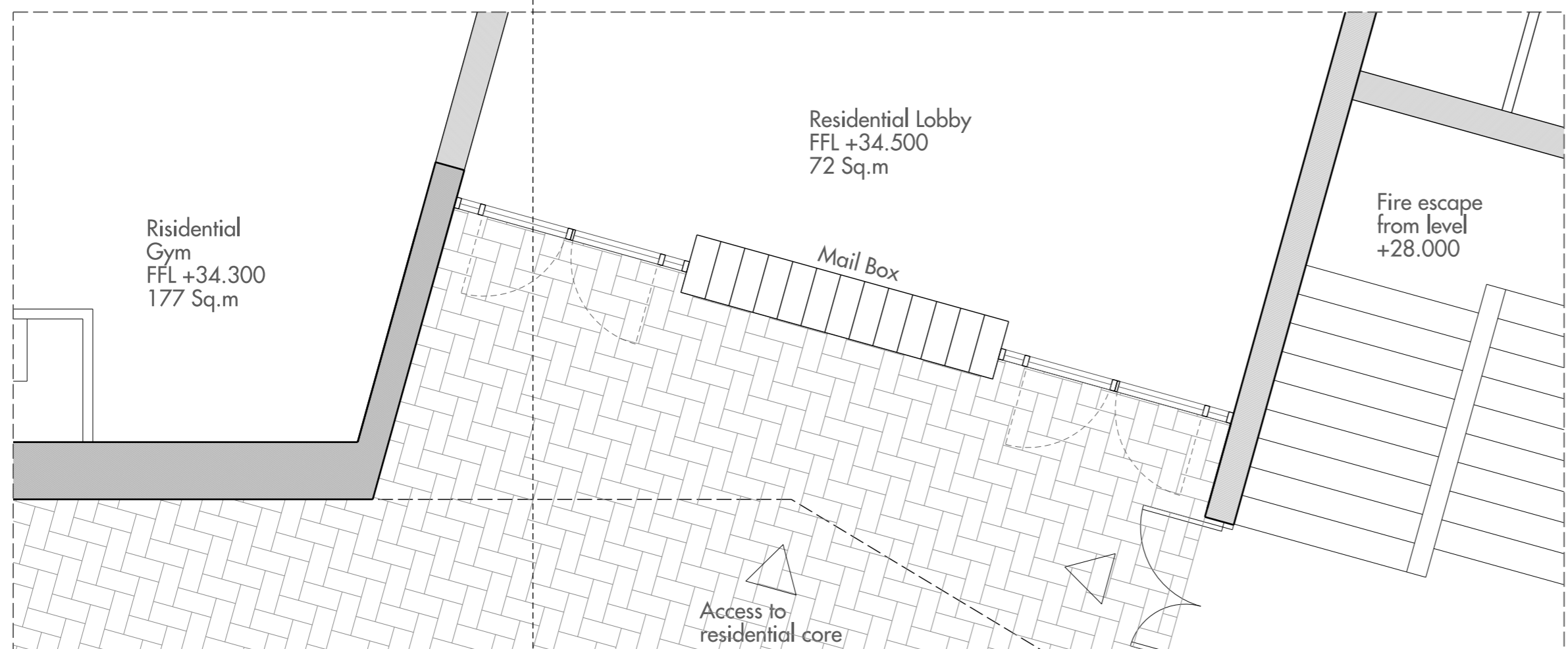
CAMDEN GOODS YARD  
BLOCK C  
EAST ELEVATION BAY STUDY  
1095\_03\_07\_401

SCALE 1:50 @A1 1:100@A3

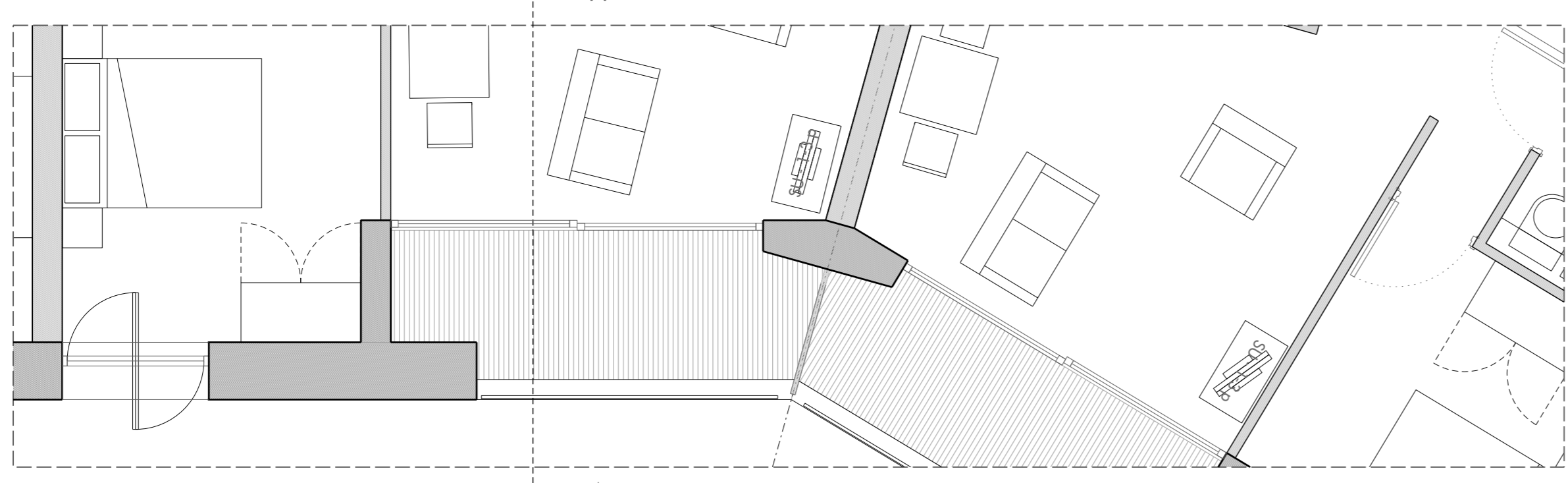


01 Block C : West Elevation  
1:50

02 Block C : Section AA  
1:50



03 Block C : Ground Floor  
1:50



04 Block C : Typical Floor Plan  
1:50

- Bay Study Key
1. Brick Parapet
  2. Multi Grey Brickwork
  3. Metal Window Frame
  4. Metal Balustrade
  5. Glazing
  6. Glazed Balustrade
  7. Pre-Cast Concrete Coping
  8. Pre-Cast Concrete Sill
  9. Pre-Cast Concrete Panel
  10. Metal Louvres
  11. Aluminium Door
  12. Glazed Door
  13. White through coloured render soffit
  14. Translucent Glazing



REV	DATE	DESCRIPTION	CHK
F1	30/04/2017	ISSUED FOR PLANNING	MCA
F2	03/10/2017	ISSUED FOR PLANNING AMENDMENTS	MCA

AMENDMENTS:  
 - changed metal balustrade profile  
 - removed residential entrance canopy  
 - amended key

Allies and Morrison  
 85 Southwark Street  
 London SE1 0HX  
 telephone 020 7921 0100  
 facsimile 020 7921 0101  
 email info@alliesandmorrison.com  
 A&M JOB NO: 1095

CAMDEN GOODS YARD  
 BLOCK C  
 WEST ELEVATION BAY STUDY 2  
 1095\_03\_07\_402  
 SCALE 1:50 @A1 1:100@A3