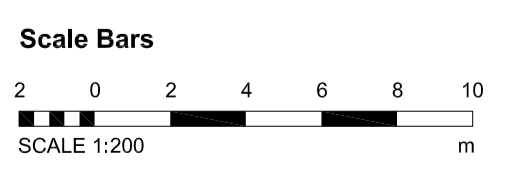
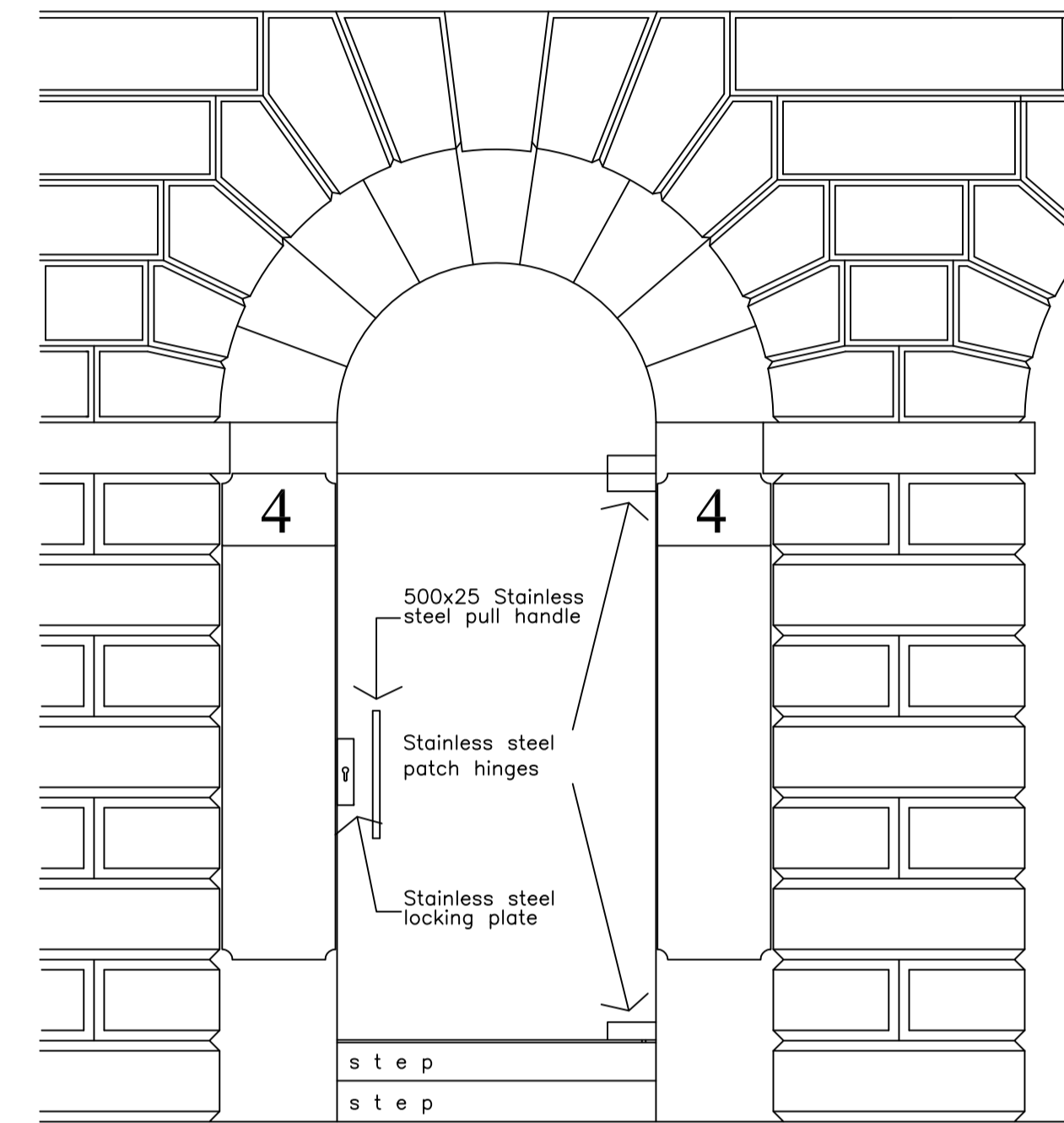
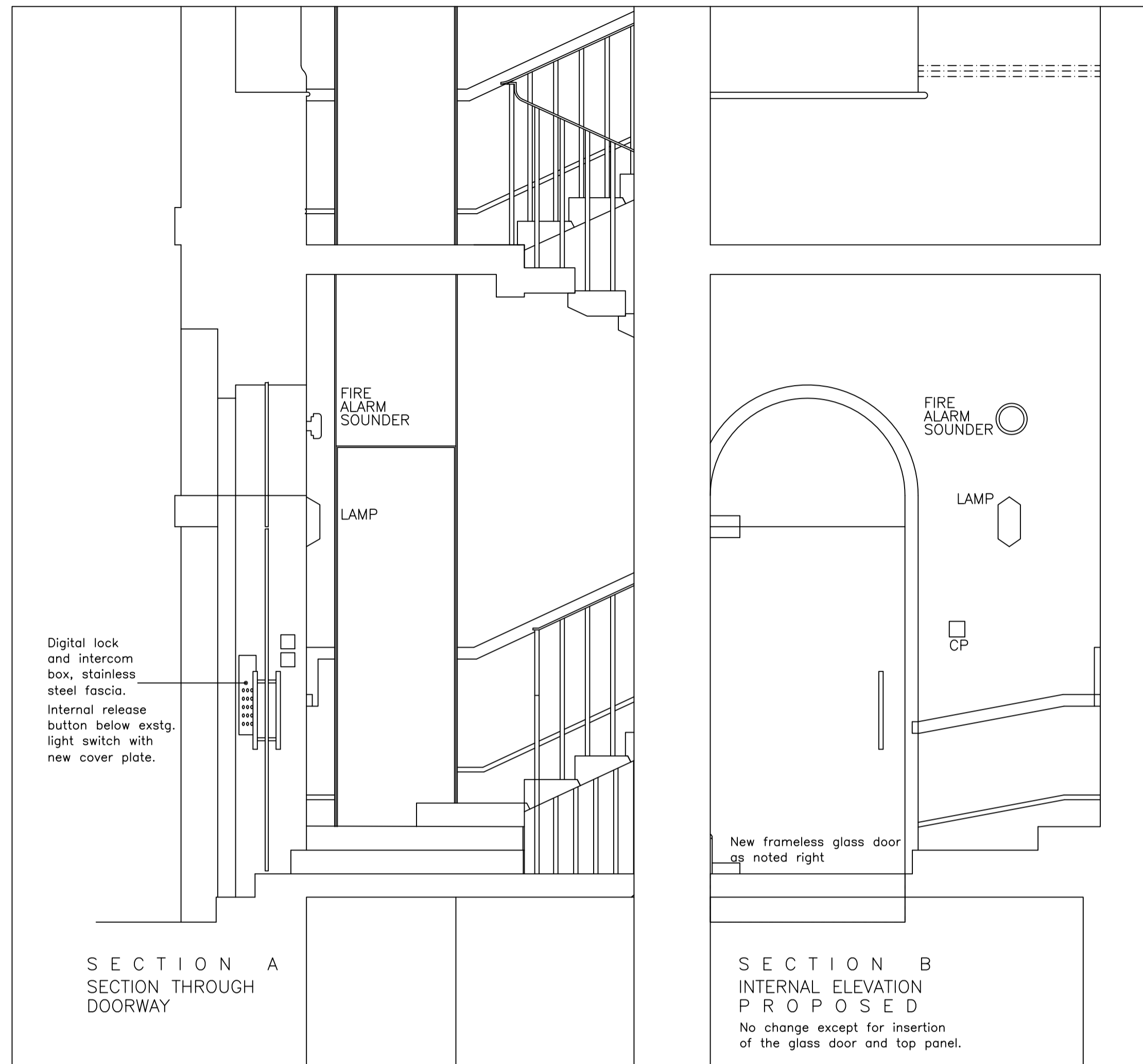


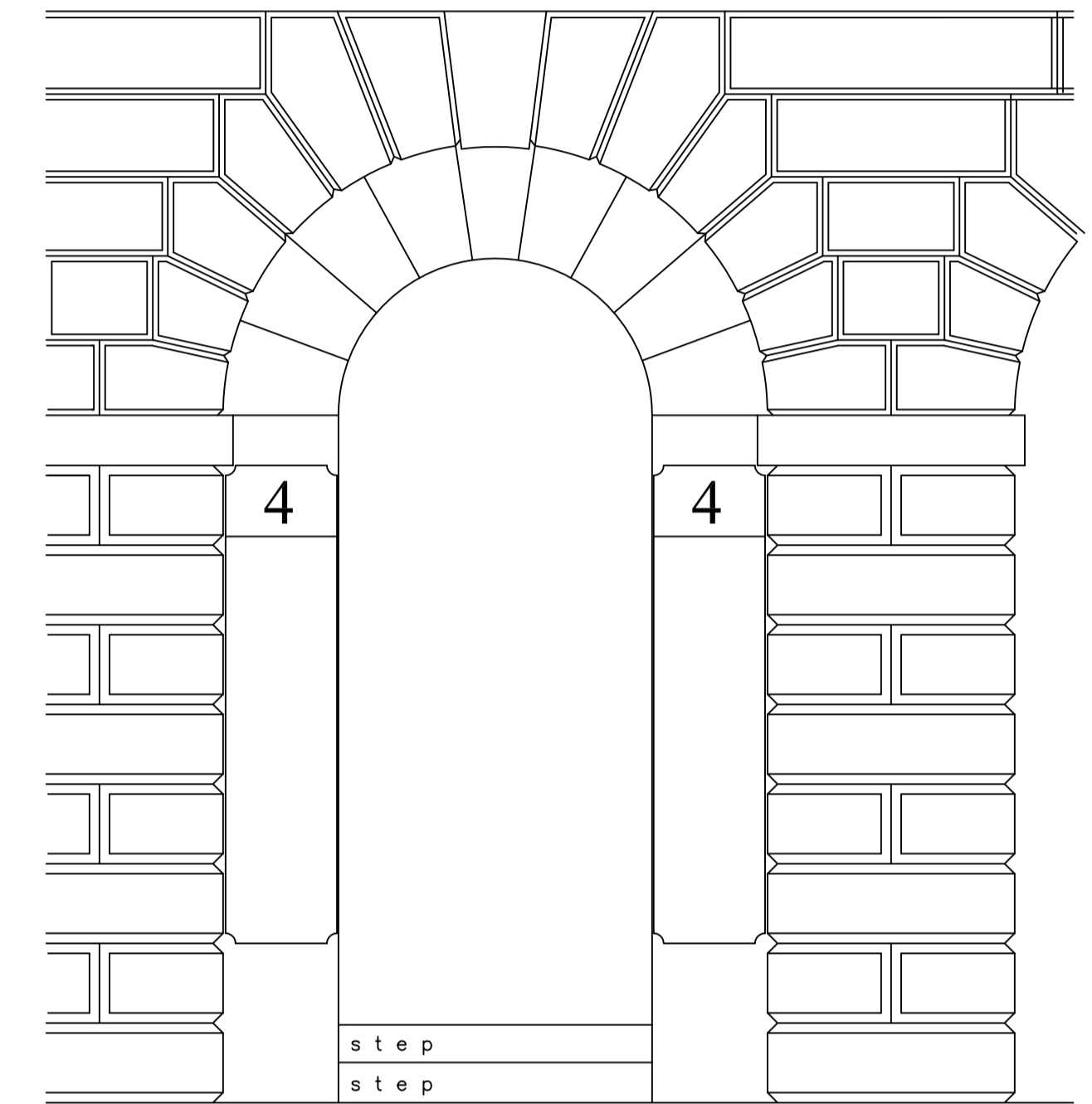


PROPOSED SITE PLAN

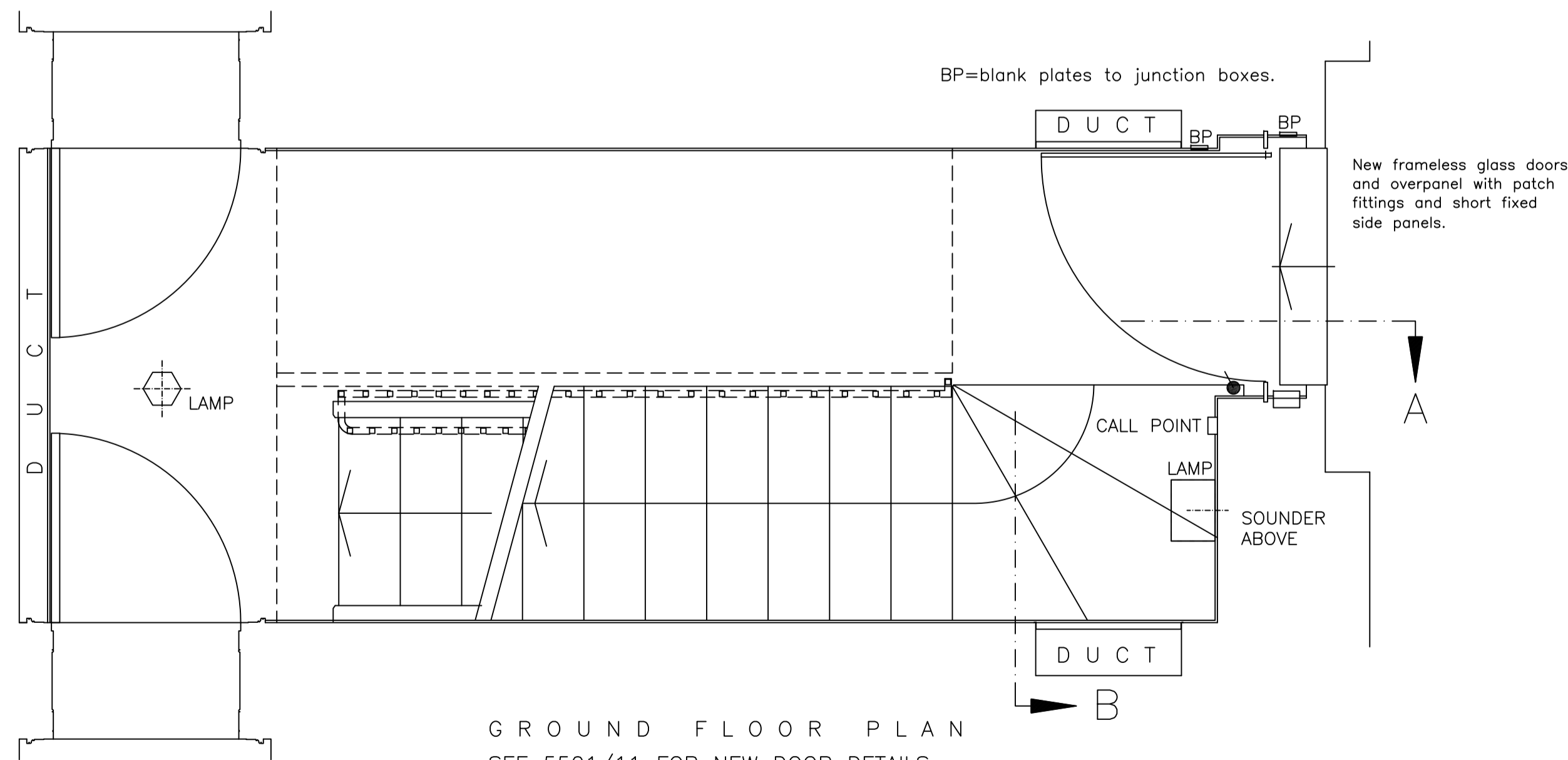




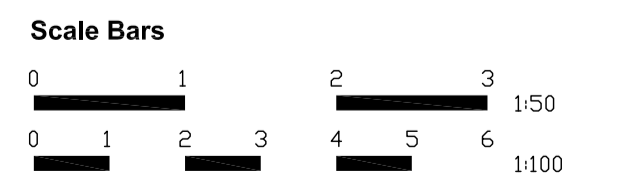
EXTERNAL ELEVATION PROPOSED
New frameless glass door and overpanel with patch fittings and short fixed side panels.
Stainless steel handles.
Floor closer and lock.



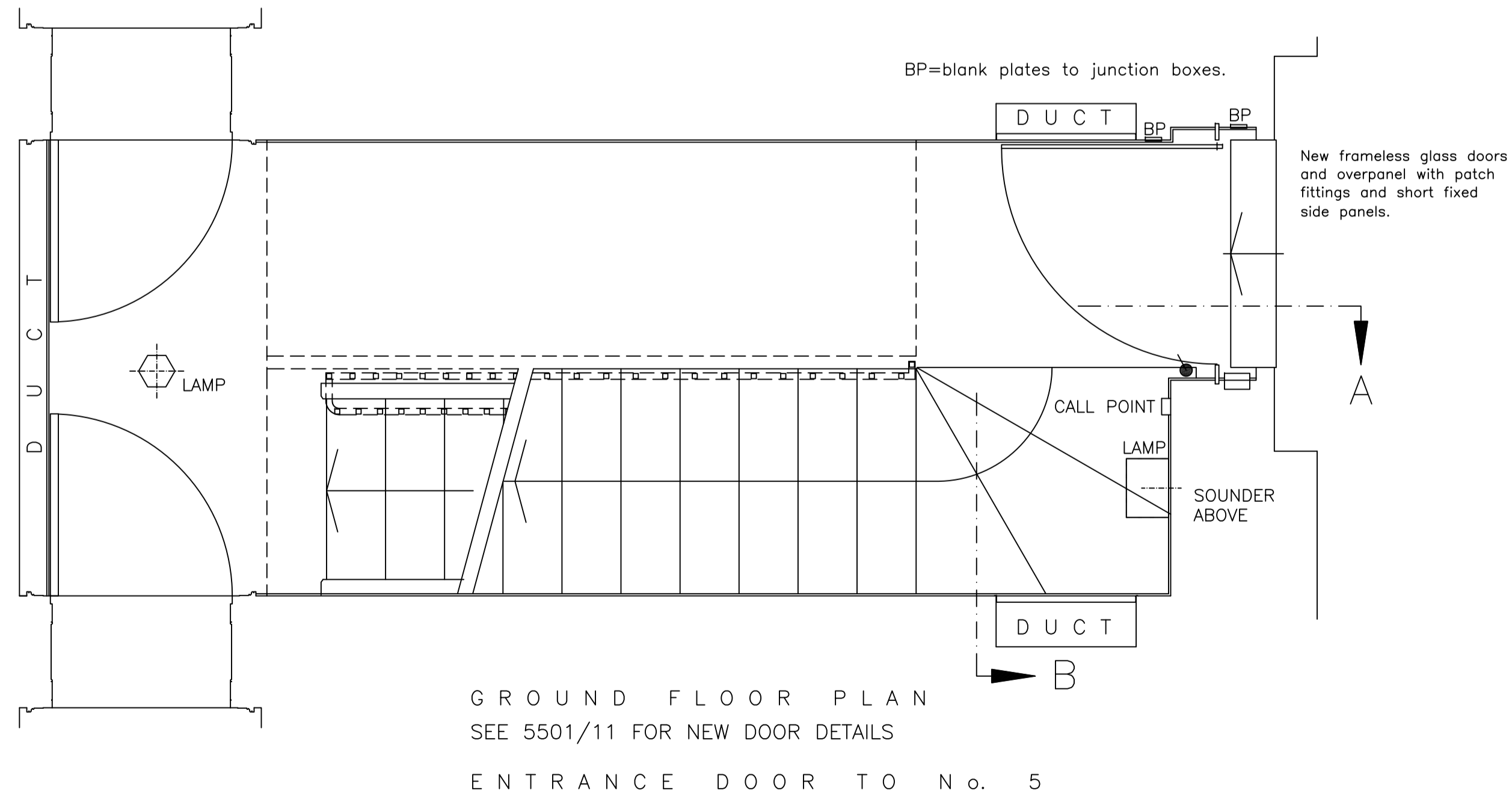
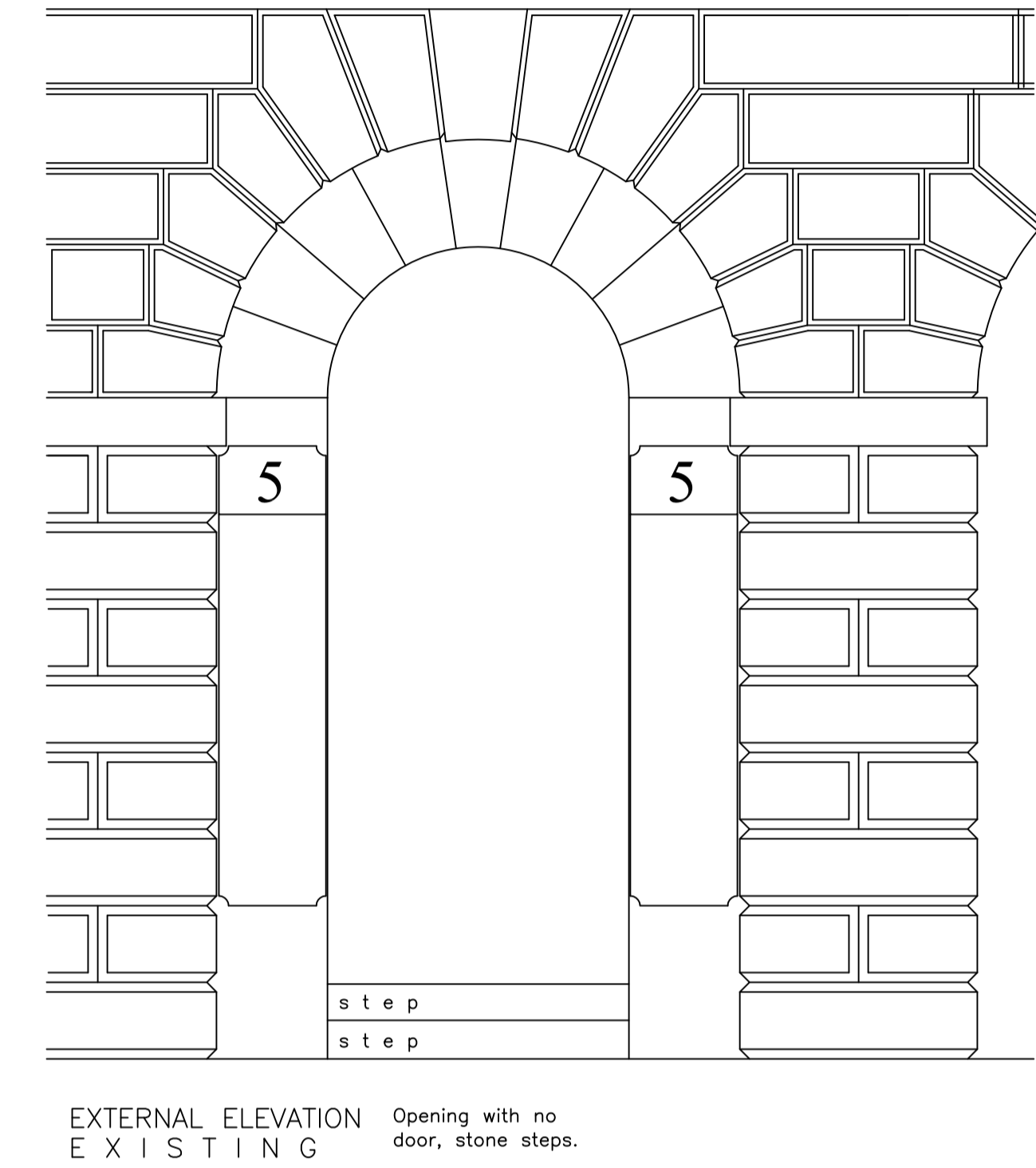
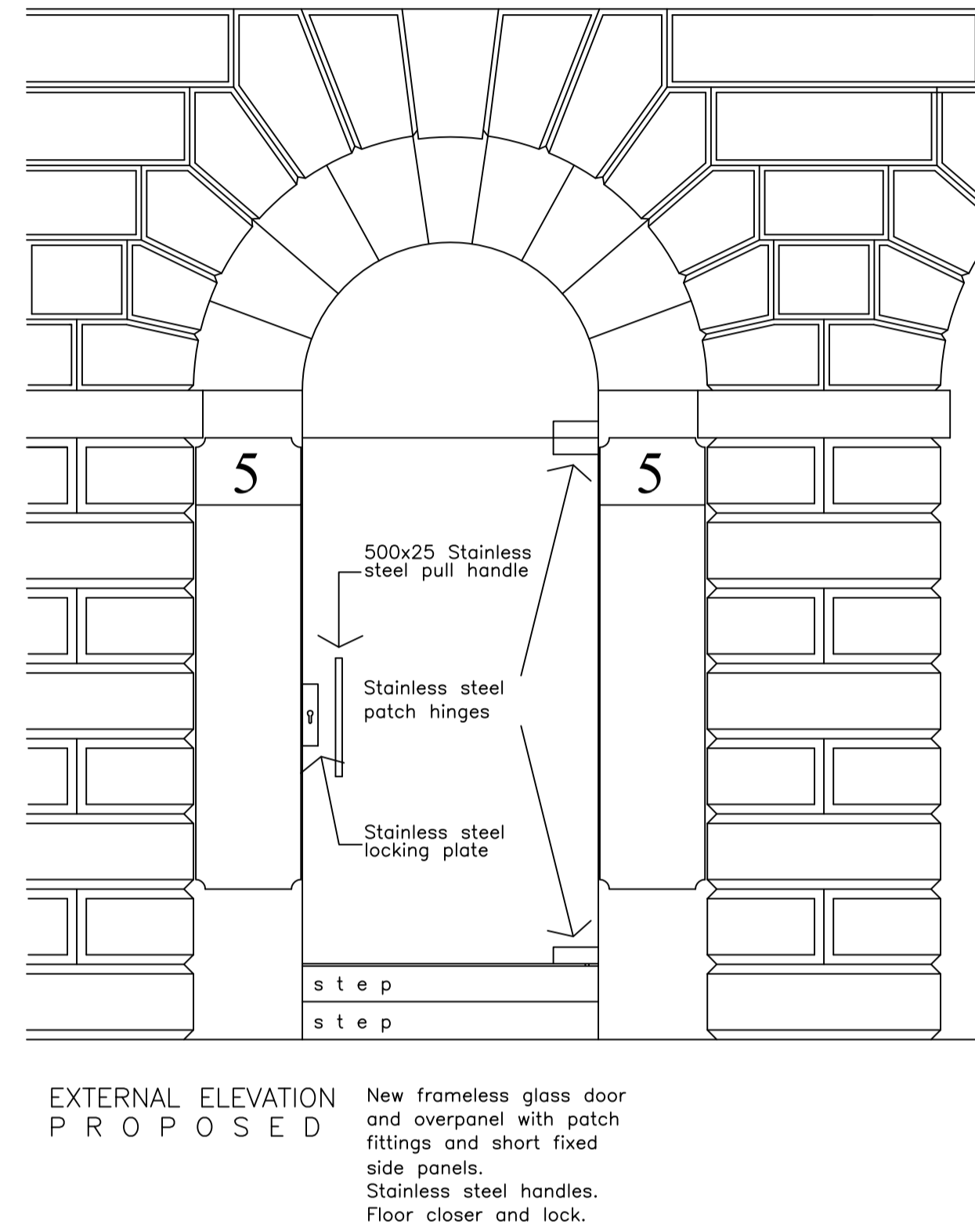
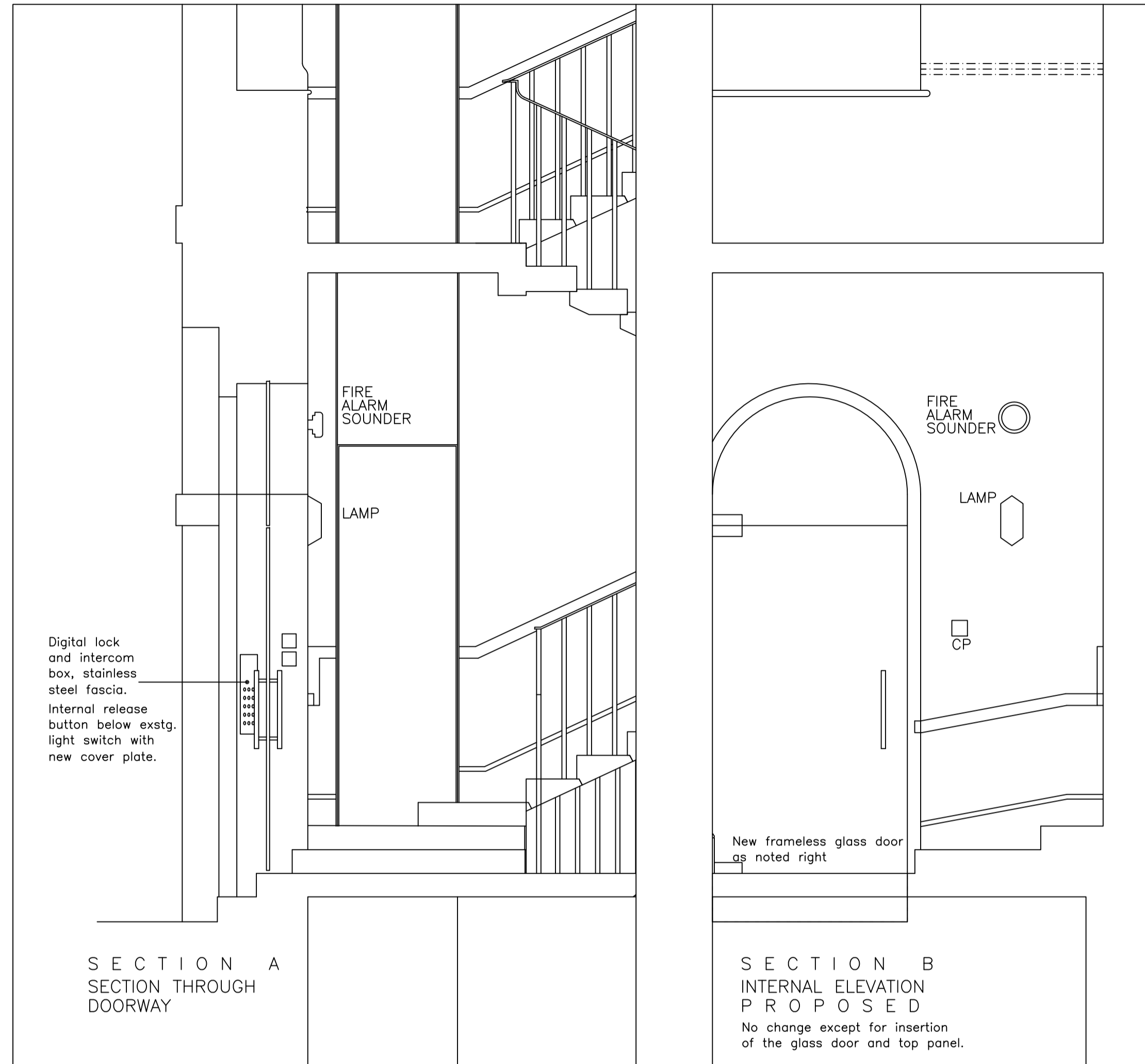
EXTERNAL ELEVATION EXISTING
Opening with no door, stone steps.



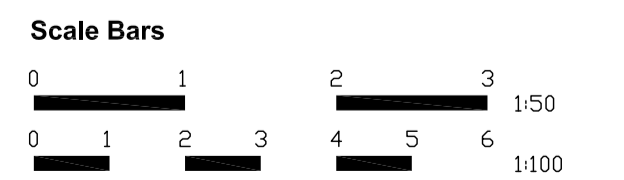
GROUND FLOOR PLAN
SEE 5501/11 FOR NEW DOOR DETAILS
ENTRANCE DOOR TO No. 4

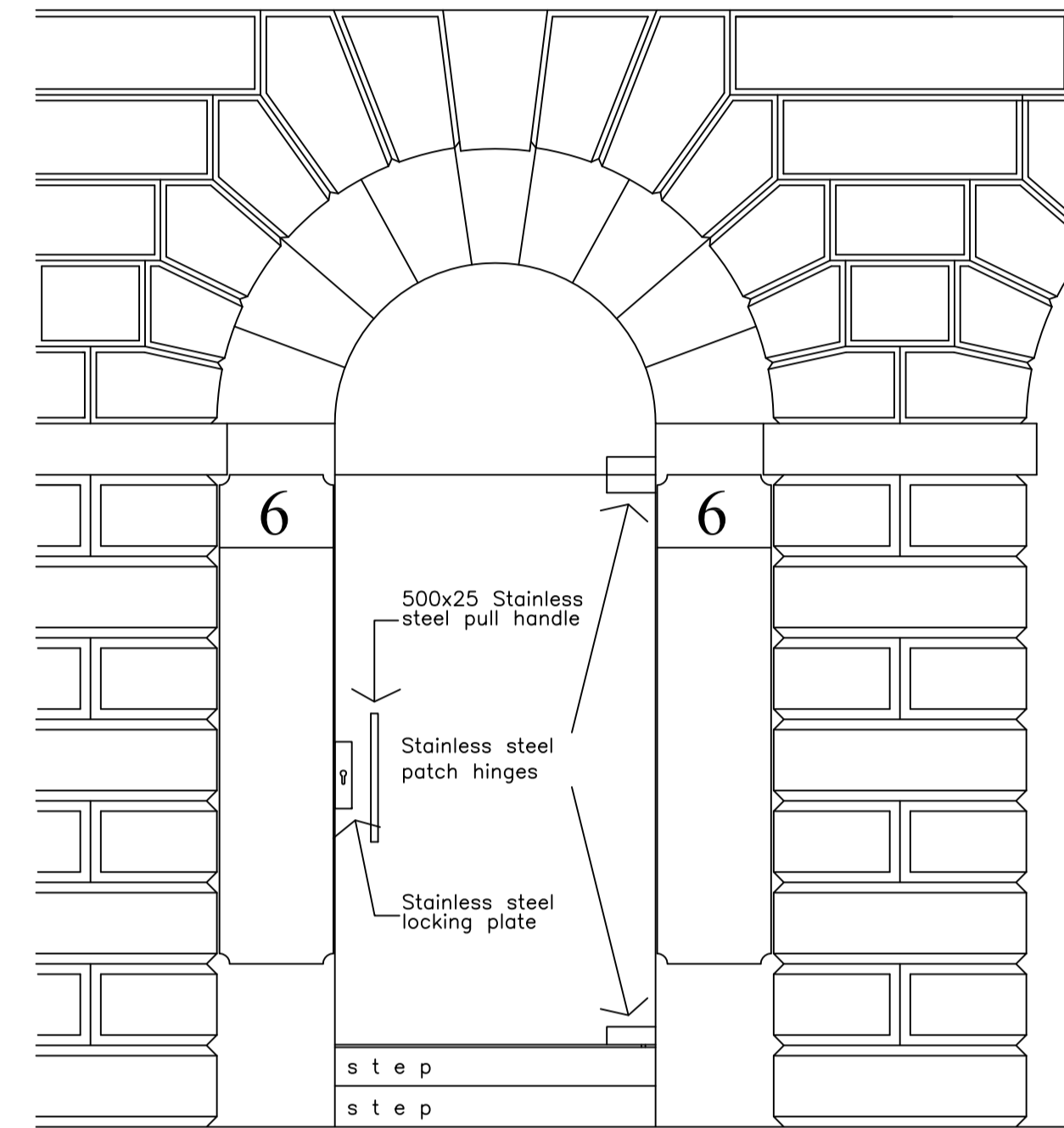
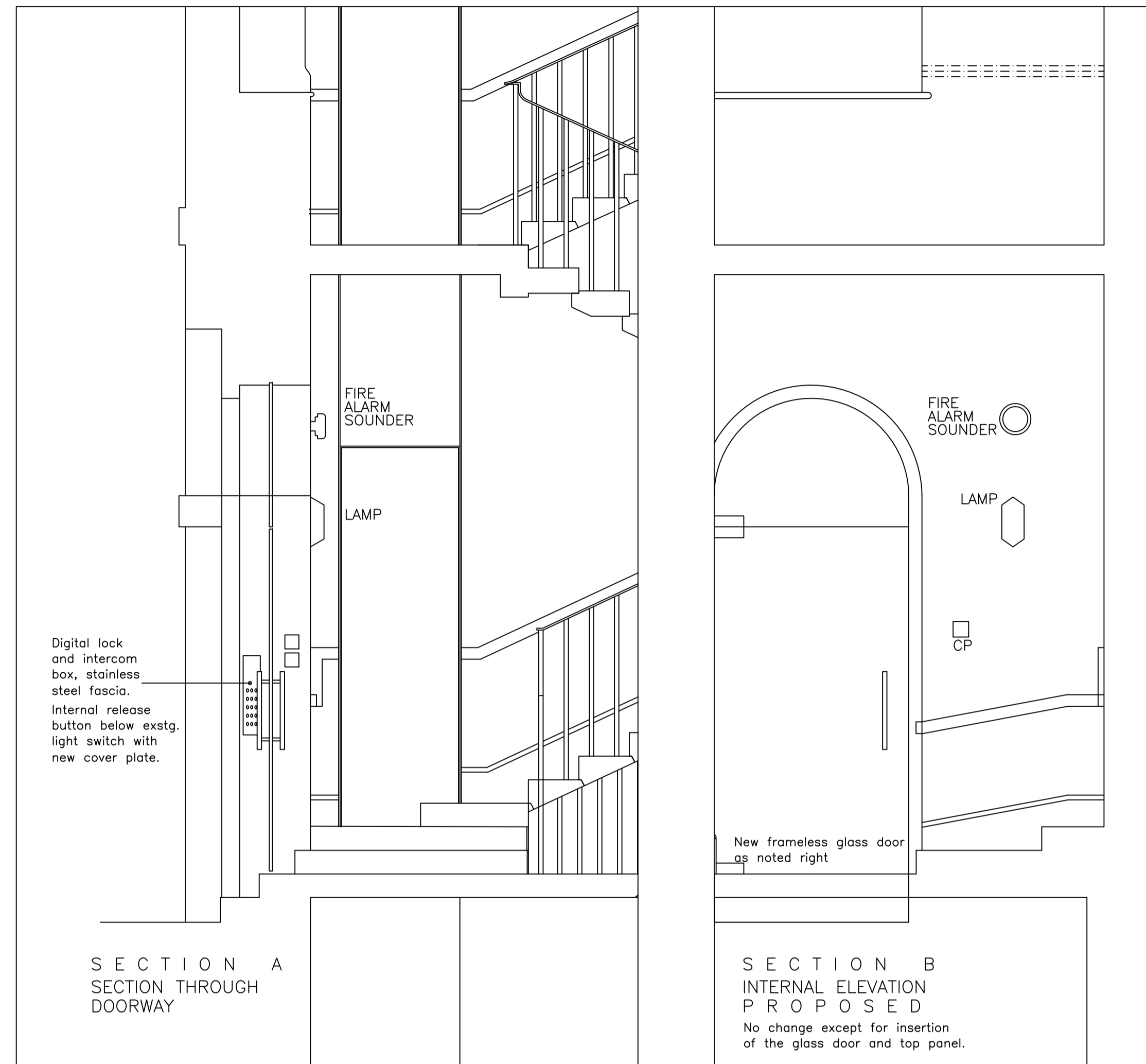


PROPOSED DRAWINGS

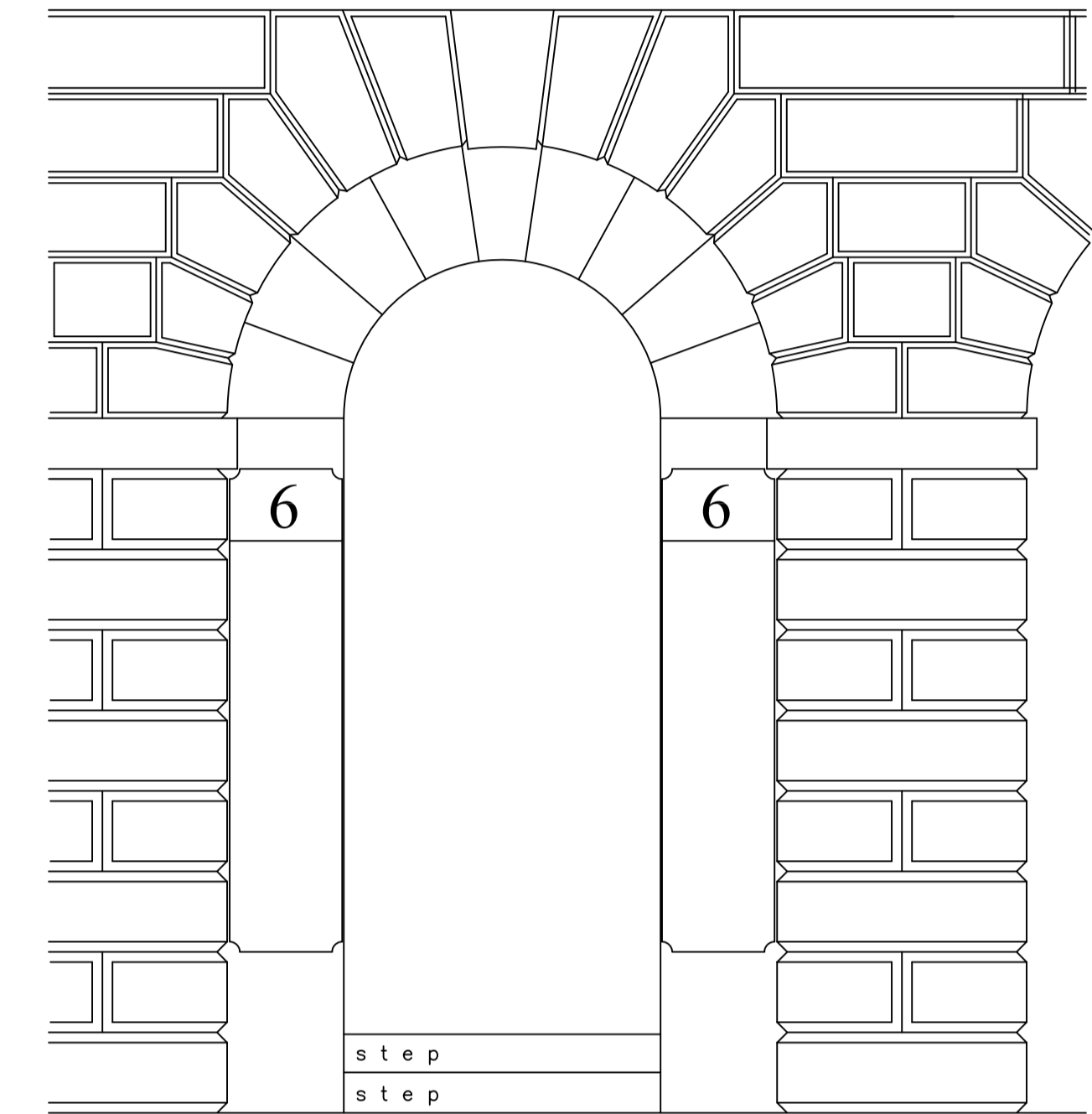


PROPOSED DRAWINGS

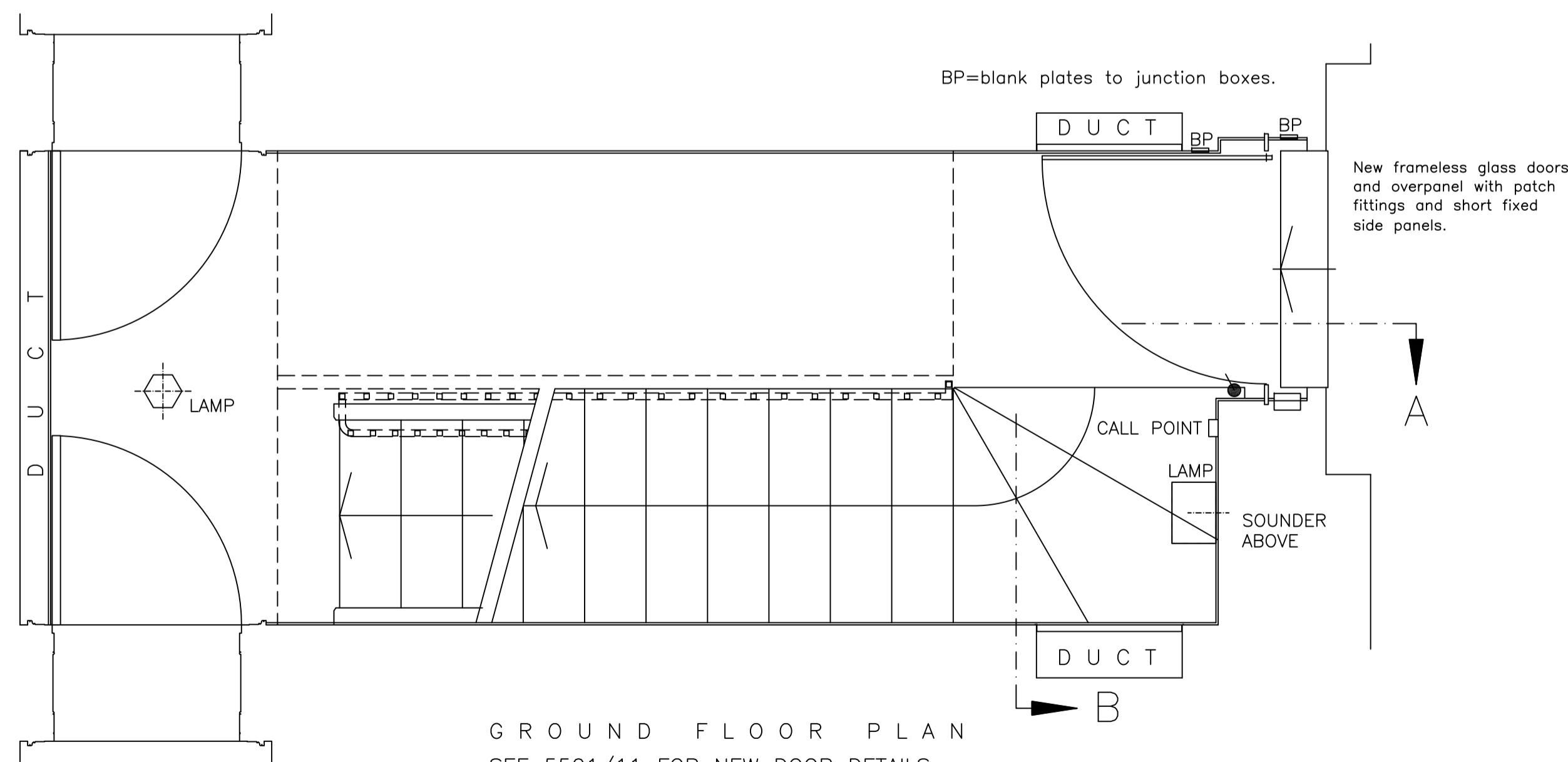




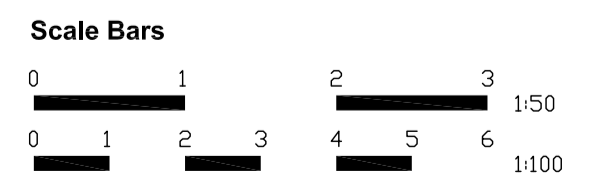
New frameless glass door and overpanel with patch fittings and short fixed side panels.
Stainless steel handles.
Floor closer and lock.



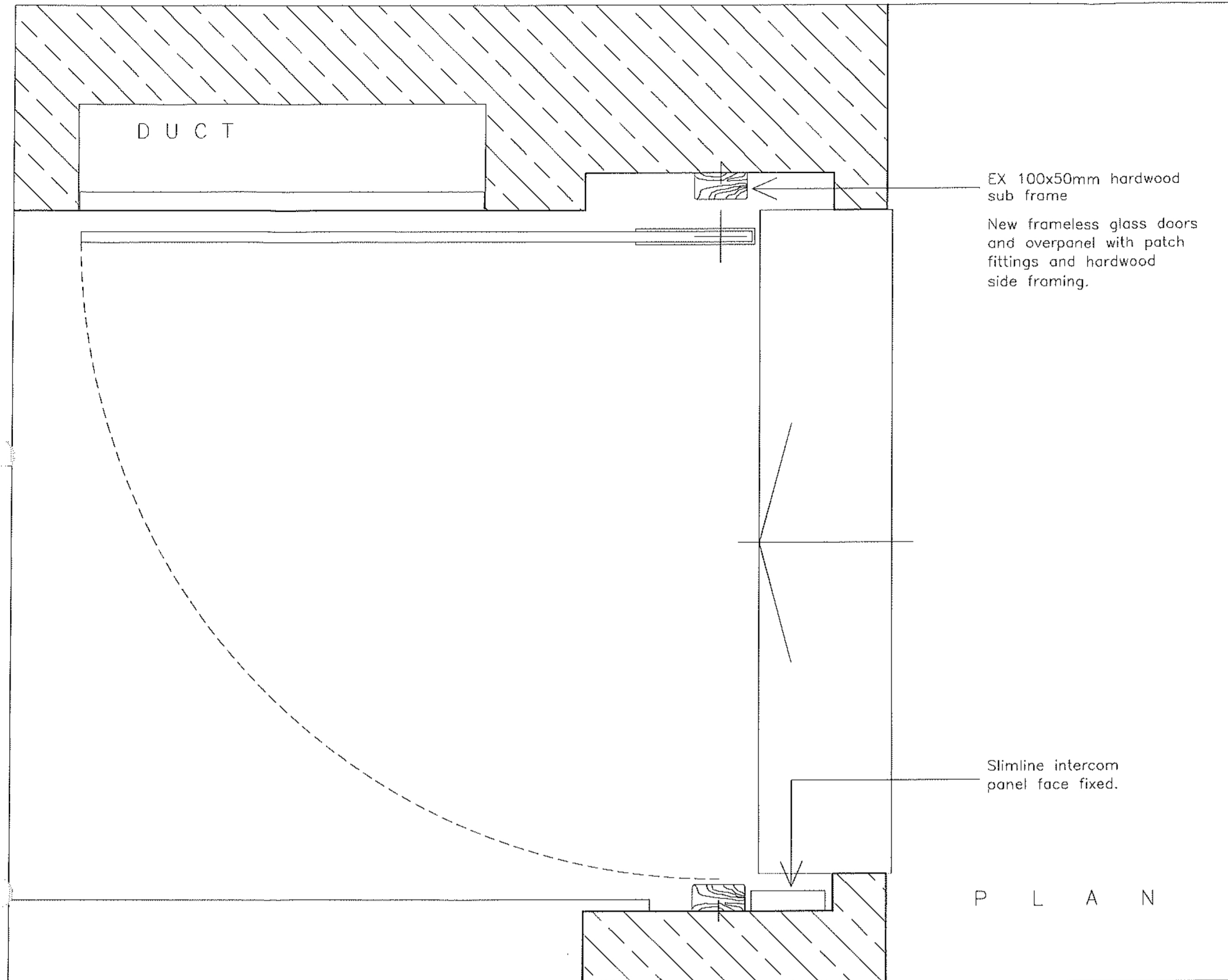
Opening with no door, stone steps.



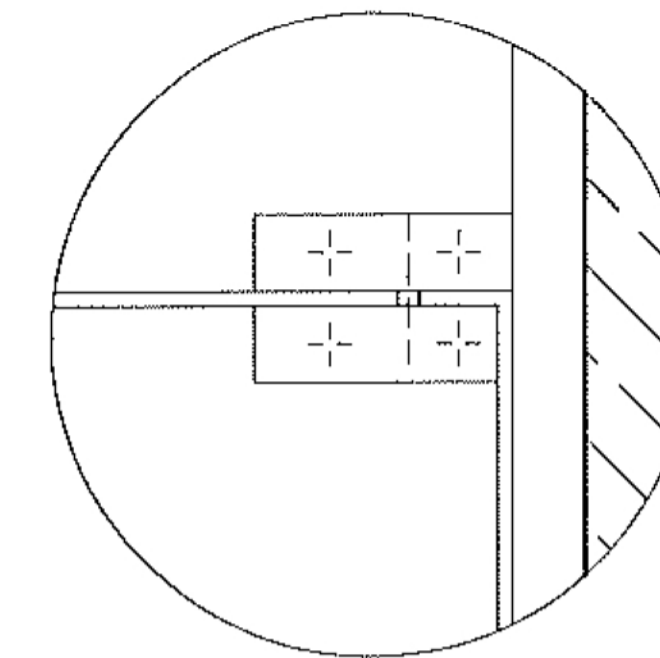
GROUND FLOOR PLAN
SEE 5501/11 FOR NEW DOOR DETAILS
ENTRANCE DOOR TO No. 6



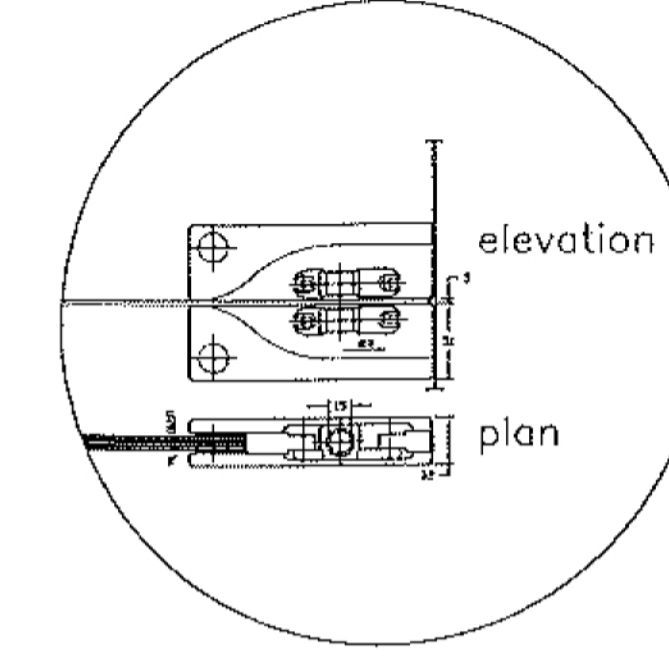
PROPOSED DRAWINGS



ELEVATION DETAILS



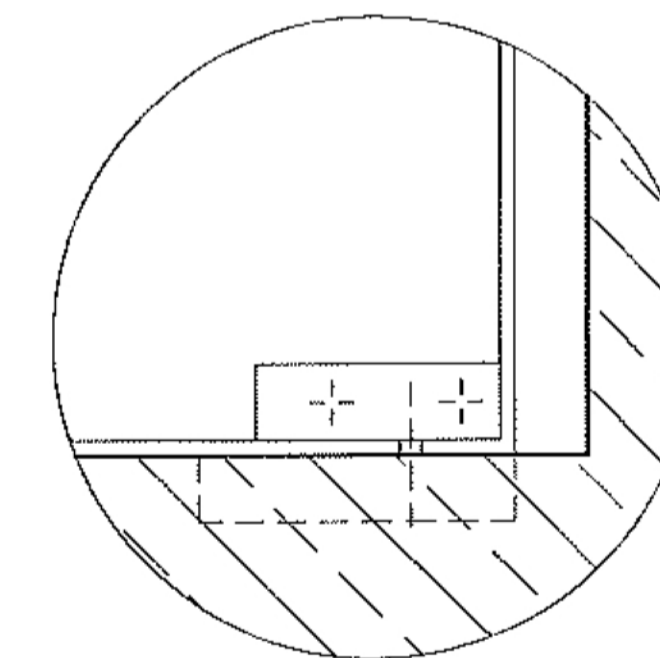
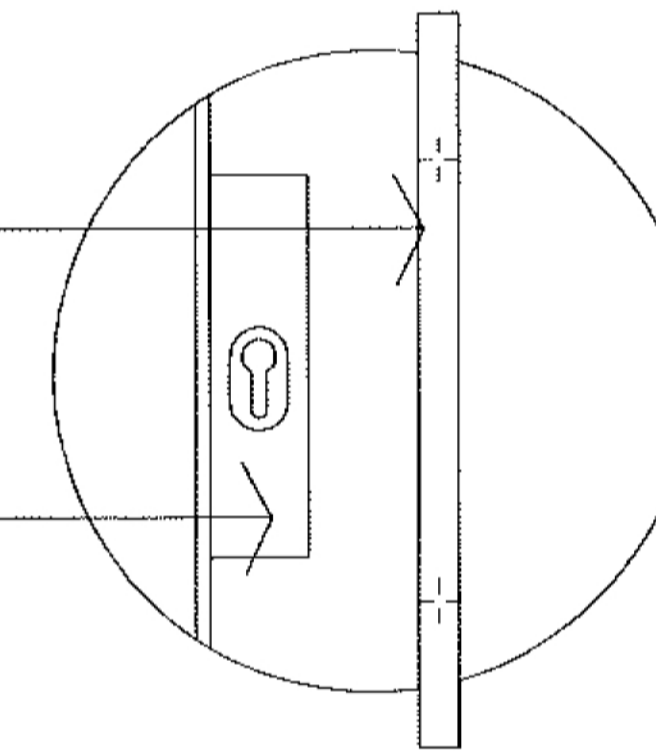
Stainless steel top patch hinge detail



Manufacturer's detail of patch detail.

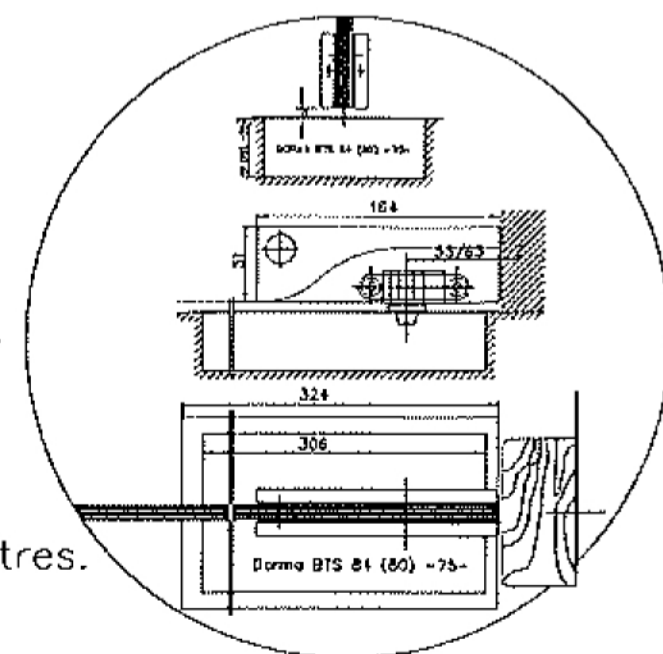
Back to back 500x25 Stainless steel pull handle

Stainless steel locking plate



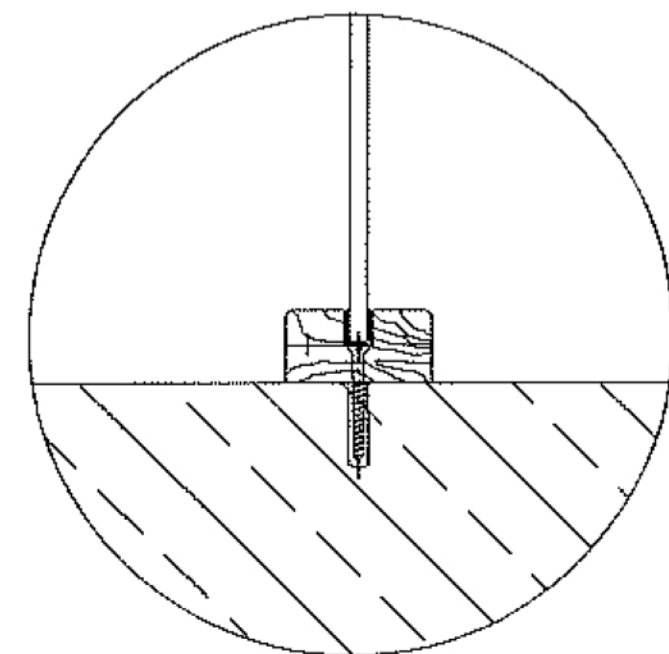
Stainless steel base patch hinge and floor closer, see technical detail to left.

Manufacturer's detail of floor hinge patch plate, and floor closer. Carefully form opening in floor, and fix as directed by mfr. Timber frame plugged and screwed to wall at approx 300mm centres.



Floor hinge detail

Matching hardwood plugs over screws for door frame sections.



Fan light plan detail

PROPOSED DETAILS