

SAFETY, HEALTH AND ENVIRONMENTAL INFORMATION:

IN ADDITION TO THE HAZARDS/RISKS NORMALLY ASSOCIATED WITH THE TYPE OF WORK DETAILED ON THIS DRAWING, NOTE THE FOLLOWING:

SIGNIFICANT RESIDUAL RISKS:

THESE STATEMENTS RESULT FROM THE DESIGN RISK ASSESSMENTS CARRIED OUT BY THE DESIGNER. THE SAFETY, HEALTH AND ENVIRONMENTAL INFORMATION IS INTENDED TO BE CONSISTENT WITH, BUT NOT REPLACE, THE HEALTH AND SAFETY INFORMATION ISSUED AS PART OF THE DOCUMENTATION PREPARED BY THE CDM-C. RISKS SHOWN ARE SIGNIFICANT RISKS ONLY I.E. THOSE WHICH AN EXPERIENCED CONTRACTOR MAY NOT REASONABLY ANTICIPATE.

CONSTRUCTION:

NONE KNOWN

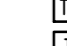



MAINTENANCE:

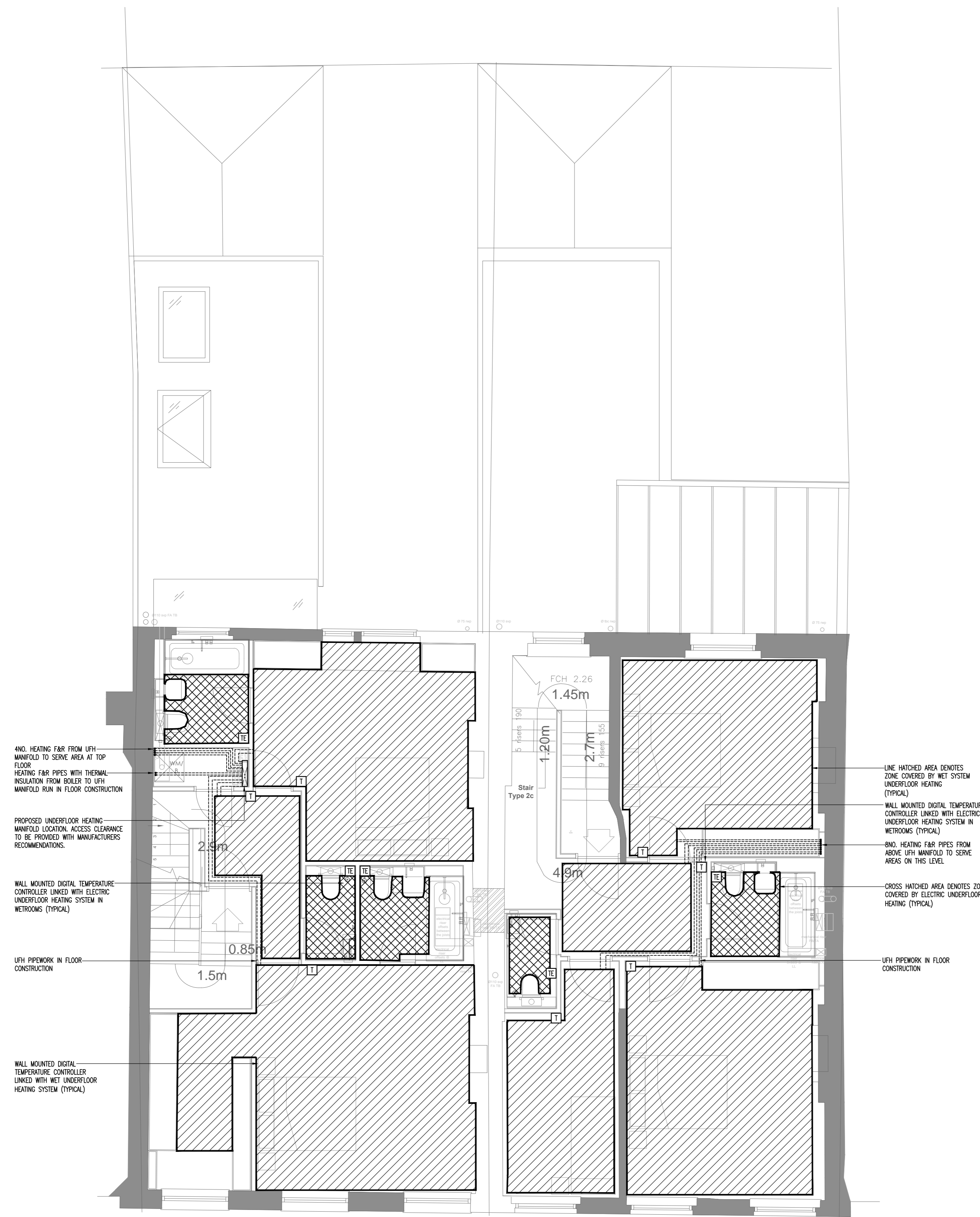
NONE KNOWN

NOTE:

1. THIS DRAWING IS TO BE READ IN CONJUNCTION WITH ALL MECHANICAL, ELECTRICAL AND PUBLIC HEALTH SERVICES DRAWINGS FOR THIS CONTRACT.
2. ALL EN-SUITES W.C.'S, BATHROOM/SHOWER ROOMS TO BE PROVIDED WITH ELECTRIC UNDERFLOOR HEATING AND WALL MOUNTED DIGITAL TEMPERATURE CONTROLLERS.
3. WET UNDERFLOOR HEATING SYSTEM TO BE COMATIBLE WITH PROPOSED FLOOR FINISHES.
4. FOR RISER DETAILS PLEASE REFER TO 9000 SERIES DRAWINGS.
5. WET AND ELECTRICAL UNDERFLOOR HEATING CIRCUITS IN EACH ROOM TO BE COORDINATED WITH I/L FURNITURE. UNDERFLOOR HEATING CIRCUIT NOT TO BE INSTALLED BELOW FIXED FURNITURE ELEMENTS.

LEGEND:

-  WALL MOUNTED THERMOSTAT/CONTROLLER FOR ELECTRIC UFH
-  WALL MOUNTED THERMOSTAT/CONTROLLER FOR WET UFH
-  INDICATES AREA COVERED BY ELECTRIC UFH
-  INDICATES AREA COVERED BY WET SYSTEM UFH



4NO. HEATING F&R FROM UFH MANFOLD TO SERVE AREA AT TOP FLOOR. HEATING F&R PIPES WITH THERMAL INSULATION FROM BOILER TO UFH MANFOLD RUN IN FLOOR CONSTRUCTION

PROPOSED UNDERFLOOR HEATING MANFOLD LOCATION. ACCESS CLEARANCE TO BE PROVIDED WITH MANUFACTURERS RECOMMENDATIONS.

WALL MOUNTED DIGITAL TEMPERATURE CONTROLLER LINKED WITH ELECTRIC UNDERFLOOR HEATING SYSTEM IN WETROOMS (TYPICAL)

UFH PIPEWORK IN FLOOR CONSTRUCTION

WALL MOUNTED DIGITAL TEMPERATURE CONTROLLER LINKED WITH WET UNDERFLOOR HEATING SYSTEM (TYPICAL)

LINE HATCHED AREA DENOTES ZONE COVERED BY WET SYSTEM UNDERFLOOR HEATING (TYPICAL)

WALL MOUNTED DIGITAL TEMPERATURE CONTROLLER LINKED WITH ELECTRIC UNDERFLOOR HEATING SYSTEM IN WETROOMS (TYPICAL)

4NO. HEATING F&R PIPES FROM ABOVE UFH MANFOLD TO SERVE AREAS ON THIS LEVEL

CROSS HATCHED AREA DENOTES ZONE COVERED BY ELECTRIC UNDERFLOOR HEATING (TYPICAL)

UFH PIPEWORK IN FLOOR CONSTRUCTION

C1	17/03/2017	CONTRACT ISSUE
T4	20/02/2017	LATEST BACKGROUND INCORPORATED
T3	19/09/2016	TENDER ISSUE
T2	19/08/2016	TENDER ISSUE
T1	27/06/2016	TENDER ISSUE
P1	06/05/2016	PRELIMINARY ISSUE
Rev	Date	Description

Status: **CONTRACT**

Architect: **MODULOR STUDIO**

Client: **GUILFORD LIMITED**

MCSERVE

83 Blackfriars Road
London SE1 8HA
T: 020 3141 5800
W: www.mcsolve.com

Project: **66-67 GUILFORD STREET LONDON**

Title: **THIRD FLOOR UNDERFLOOR HEATING SERVICES LAYOUT**

Date	Scale	Drawn	Checked
APRIL 2016	1:50 @ A1	KJ	MH

Drawing No: **C6123/3404 C1**