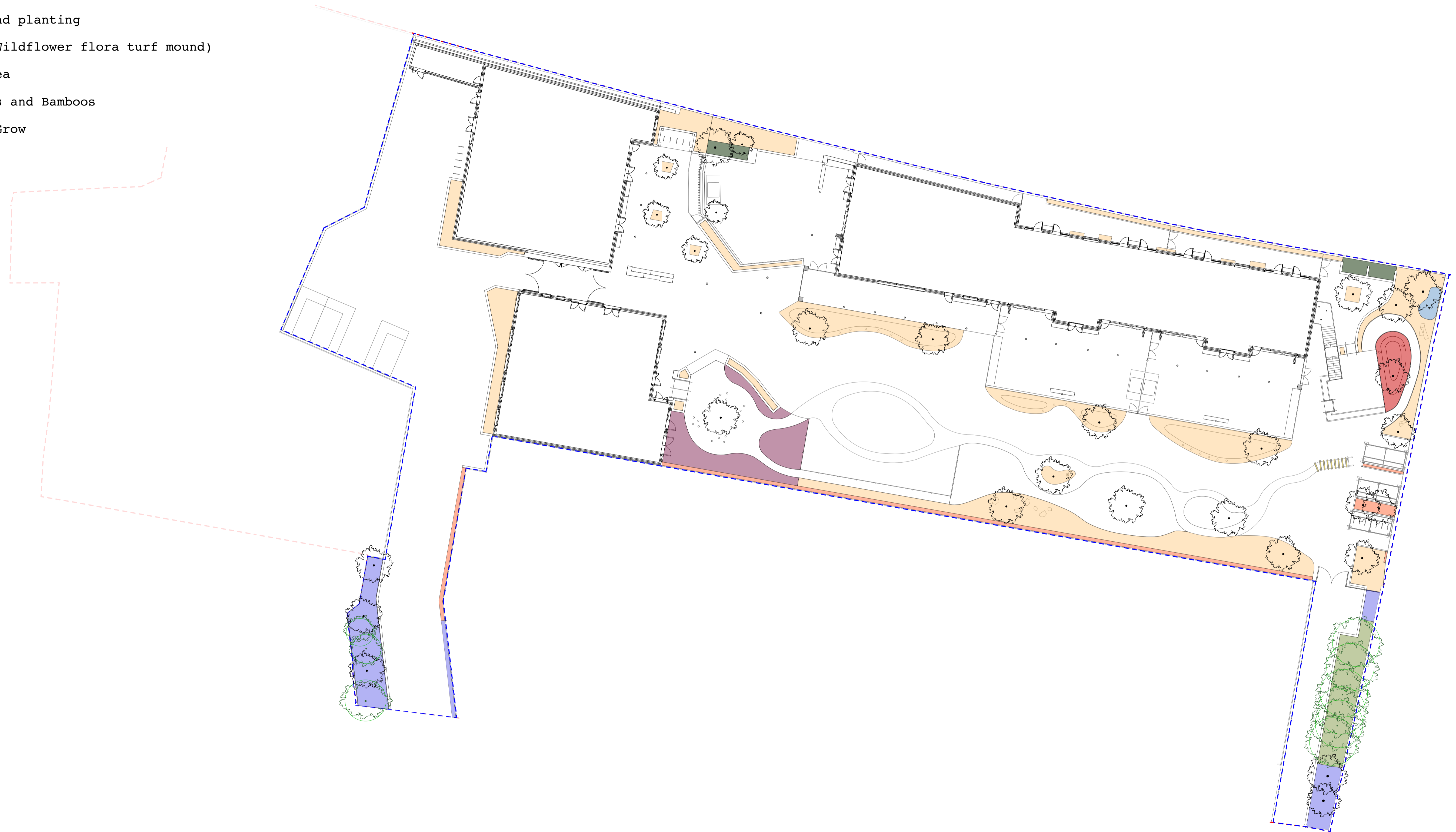


TO BE READ IN CONJUNCTION WITH CURRENT REVISION OF **KL037.G.15.SMP.2** and **KL037.G.07.PP1**

**KEY:**

- General Groundcover, Herbaceous plants & Ferns
- Climbers
- Woodland planting
- Turf (Wildflower flora turf mound)
- Bog Area
- Grasses and Bamboos
- Dig & Grow

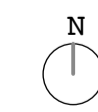


**KEY:**

- Existing tree RPA (Root Protection Area)
- Existing tree
- Proposed tree

**NOTE:**

All external works should comply with Arboricultural Method Statement.



**JCLA**

3A Iliffe Yard  
LONDON SE17 3QA  
Telephone  
+44 (0)207 703 3270

www.jcla.co.uk

**Notes**

- Do not scale from drawings.
- To be read in conjunction with all relevant Architects', Services and Structural Engineers' drawings.
- All existing site, tree and building information has been compiled from different sources.
- All dimensions to be checked on site.

**Revisions**

**CONSTRUCTION ISSUE**

**Bubbles key**

- Changes

**Project**

Kingsgate Liddell

**Project No.**

**KL037**

**Client**

London Borough of Camden

**Date**

18th September 2017

**Scale**

1:250 @ A1

**Drawing Name.**

Soft maintenance plan: School

**Dwg No.**

KL037.G.14.SMP.1

**Revision**

\*