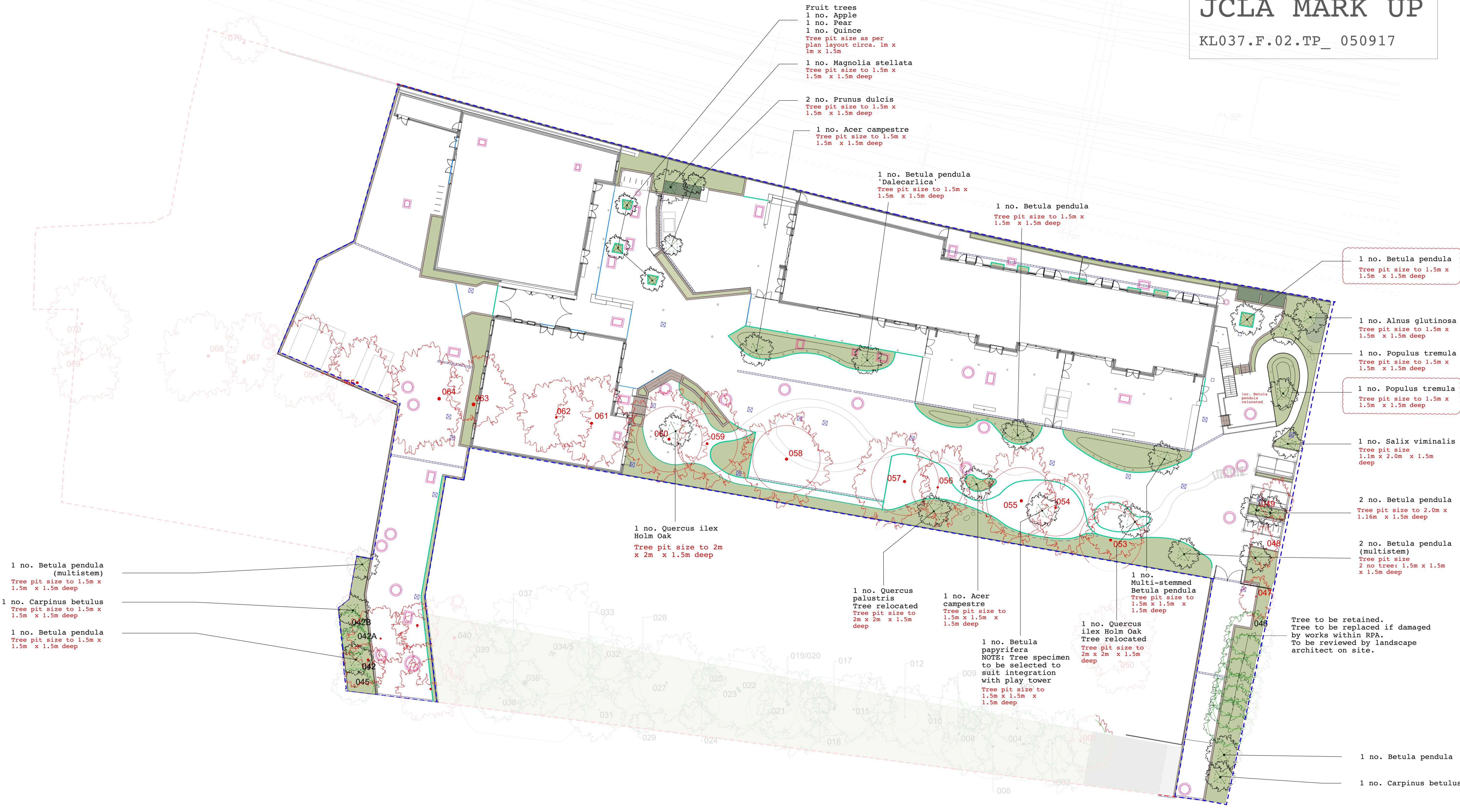


# JCLA MARK UP

KL037.F.02.TP\_ 050917



1 no. *Betula pendula* (multistem)  
Tree pit size to 1.5m x 1.5m deep

1 no. *Carpinus betulus*  
Tree pit size to 1.5m x 1.5m deep

1 no. *Betula pendula*  
Tree pit size to 1.5m x 1.5m deep

Fruit trees  
1 no. Apple  
1 no. Pear  
1 no. Quince  
Tree pit size as per plan layout circa. 1m x 1m x 1.5m

1 no. *Magnolia stellata*  
Tree pit size to 1.5m x 1.5m x 1.5m deep

2 no. *Prunus dulcis*  
Tree pit size to 1.5m x 1.5m x 1.5m deep

1 no. *Acer campestre*  
Tree pit size to 1.5m x 1.5m x 1.5m deep

1 no. *Betula pendula* 'Dalecarlica'  
Tree pit size to 1.5m x 1.5m x 1.5m deep

1 no. *Betula pendula*  
Tree pit size to 1.5m x 1.5m x 1.5m deep

1 no. *Betula pendula*  
Tree pit size to 1.5m x 1.5m x 1.5m deep

1 no. *Alnus glutinosa*  
Tree pit size to 1.5m x 1.5m x 1.5m deep

1 no. *Populus tremula*  
Tree pit size to 1.5m x 1.5m x 1.5m deep

1 no. *Populus tremula*  
Tree pit size to 1.5m x 1.5m x 1.5m deep

1 no. *Salix viminalis*  
Tree pit size 1.1m x 2.0m x 1.5m deep

2 no. *Betula pendula*  
Tree pit size to 2.0m x 1.16m x 1.5m deep

2 no. *Betula pendula* (multistem)  
Tree pit size 2 no tree: 1.5m x 1.5m x 1.5m deep

1 no. *Quercus ilex* Holm Oak  
Tree pit size to 2m x 2m x 1.5m deep

1 no. *Quercus palustris*  
Tree relocated  
Tree pit size to 2m x 2m x 1.5m deep

1 no. *Acer campestre*  
Tree pit size to 1.5m x 1.5m x 1.5m deep

1 no. Multi-stemmed *Betula pendula*  
Tree pit size to 1.5m x 1.5m x 1.5m deep

1 no. *Quercus ilex* Holm Oak  
Tree relocated  
Tree pit size to 2m x 2m x 1.5m deep

1 no. *Betula papyrifera*  
NOTE: Tree specimen to be selected to suit integration with play tower  
Tree pit size to 1.5m x 1.5m x 1.5m deep

Tree to be retained. Tree to be replaced if damaged by works within RPA. To be reviewed by landscape architect on site.

1 no. *Betula pendula*

1 no. *Carpinus betulus*

**KEY**

000	Existing tree number in arboricultural report	—	Walls/handrails/railings/fences	▨	Proposed surface drain channels
○	Existing tree root protection area	—	Timber edges/walls/steps	▨	Proposed surface gulleys
○	Existing tree to be retained	▨	Proposed planting	▨	Proposed french drain
○	Proposed tree	▨	Proposed drawpits	▨	Proposed slot drains
○	Existing tree to be removed	▨	Proposed manholes	▨	Proposed acoustic fence foundations to sub contractor's detailed design
		○	Proposed manholes		

**JCLA**  
3A Iliffe Yard  
LONDON SE17 3QA  
Telephone  
+44 (0)207 703 3270  
www.jcla.co.uk

**Notes**  
- Do not scale from drawings.  
- To be read in conjunction with all relevant Architects', Services and Structural Engineers' drawings.  
- All existing site, tree and building information has been compiled from different sources.  
- All dimensions to be checked on site.

**Revisions**  
Revision (MARK UP FOR REVIEW):  
- 1no. *Populus tremula* adjacent to railway line NE corner swapped position with 1no. *Betula pendula* in science garden area.

**PLANNING CONDITION ISSUE**

Bubbles key  
Changes

**Project** Kingsgate Liddell  
**Project No.** KL037  
**Client** London Borough of Camden  
**Date** 5th September 2017  
**Scale** 1:250 @ A1  
**Drawing Name.** Tree plan  
**Dwg No.** KL037.F.02.TP

Revision  
**A**